

<b>IH 94: CTH BB/RAWSON AVE TO STH 100/Ryan RD (MILWAUKEE COUNTY)</b> <b>OFF-PEAK DAY 2 LANE CLOSURE</b> <b>NO DIVERSION ROUTE (MAX QUEUE METHOD)</b>	<b>OCTOBER</b> Analyzed for 2009 Construction Season
---	--

**SUMMARY OF TRAFFIC MODEL OUTPUT**

SATURDAY      WESTBOUND DIRECTION

TIME OF DAY	FLOWS AND CAPACITY IN VEH/HR						AVERAGE SPEEDS IN MPH				
	MAIN ROUTE		SITE CAPA CITY	FLOW		AV.DEL PER VEH (MINS)	AVERAGE QUEUE (VEH)	MAIN ROUTE		SITE	
	DEMAND FLOW	PCT HEAVY		MAIN ROUTE	'DIVER TED'			WITHOUT WORK ZONE	WITH WORK ZONE		
MID-1 AM	869	0.0	OFF	869	0	0.00	0	70.2	70.2	70.2	
1-2 AM	489	0.0	OFF	489	0	0.00	0	70.2	70.2	70.2	
2-3 AM	431	0.0	OFF	431	0	0.00	0	70.2	70.2	70.2	
3-4 AM	395	0.0	OFF	395	0	0.00	0	70.2	70.2	70.2	
4-5 AM	493	0.0	OFF	493	0	0.00	0	70.2	70.2	70.2	
5-6 AM	817	0.0	OFF	817	0	0.00	0	70.2	70.2	70.2	
6-7 AM	1292	0.0	OFF	1292	0	0.00	0	70.2	70.2	70.2	
7-8 AM	1779	0.0	OFF	1779	0	0.00	0	69.8	69.8	69.8	
8-9 AM	2340	0.0	1499	1866	474	10.95+	291	69.1	13.3	32.5	
9-10 AM	2643	0.0	1500	1500	1142	16.25+	400	68.7	9.6	32.5	
10-11 AM	2894	0.0	1500	1500	1394	16.24+	400	68.4	9.6	32.5	
11AM-NOON	3128	0.0	1500	1500	1628	16.23+	400	68.1	9.6	32.5	
NOON-1PM	3245	0.0	1500	1500	1745	16.22+	400	68.0	9.6	32.5	
1-2 PM	3113	0.0	1500	1500	1613	16.23+	400	68.2	9.6	32.5	
2-3 PM	3168	0.0	1500	1500	1667	16.23+	400	68.1	9.6	32.5	
3-4 PM	3263	0.0	1500	1500	1763	16.22+	400	68.0	9.6	32.5	
4-5 PM	3228	0.0	1499	1500	1728	16.22+	400	68.0	9.6	32.5	
5-6 PM	3277	0.0	1500	1500	1777	16.22+	400	67.9	9.6	32.5	
6-7 PM	2932	0.0	OFF	2932	0	0.24	21	68.4	62.8	62.8	
7-8 PM	2382	0.0	OFF	2382	0	0.00	0	69.1	69.1	69.1	
8-9 PM	1915	0.0	OFF	1915	0	0.00	0	69.7	69.7	69.7	
9-10 PM	1826	0.0	OFF	1826	0	0.00	0	69.7	69.7	69.7	
10-11 PM	1645	0.0	OFF	1645	0	0.00	0	70.0	70.0	70.0	
11PM-MID	1337	0.0	OFF	1337	0	0.00	0	70.2	70.2	70.2	

"OFF" INDICATES NO ROAD WORK (ALL LANES OPEN TO TRAFFIC)

+ INDICATES QUEUEING EXCEEDS USER-SPECIFIED MAXIMUM LIMIT

*----- SITE BREAKDOWN DELAYS -----*	
BREAKDOWN DURATION (MINS)	0
RANGE OF QUEUE DELAY - MIN (VEH-H) MAX	0.0
AV BREAKDOWNS PER DAY	0.00
AV QUEUE DELAY/DAY (VEH-H)	0.0
AV TOTAL DELAY/DAY (VEH-H)	0.0

*----- SITE ACCIDENT DELAYS -----*	
BREAKDOWN DURATION (MINS)	0
RANGE OF QUEUE DELAY - MIN (VEH-H) MAX	0
AV BREAKDOWNS PER DAY	0
AV QUEUE DELAY/DAY (VEH-H)	0
AV TOTAL DELAY/DAY (VEH-H)	0

AVERAGE ACCIDENT NUMBERS (PIA/DAY)	
MAIN ROUTE WITHOUT WORKS	0.0234
MAIN ROUTE WITH WORKS	0.0152
'DIVERSION'	0.0165
PIA: Personal Injury Accidents	
IMPACTS ON ROAD USERS	
ROAD USER COSTS PER DAY	\$132,332
CONGESTED HOURS PER DAY*	10

\*Delays Exceeding User-Specified Maximum

**IH 94: CTH BB/RAWSON AVE TO STH 100/RYAN RD (MILWAUKEE COUNTY)**  
**OFF-PEAK DAY 2 LANE CLOSURE**  
**NO DIVERSION ROUTE (MAX QUEUE METHOD)**

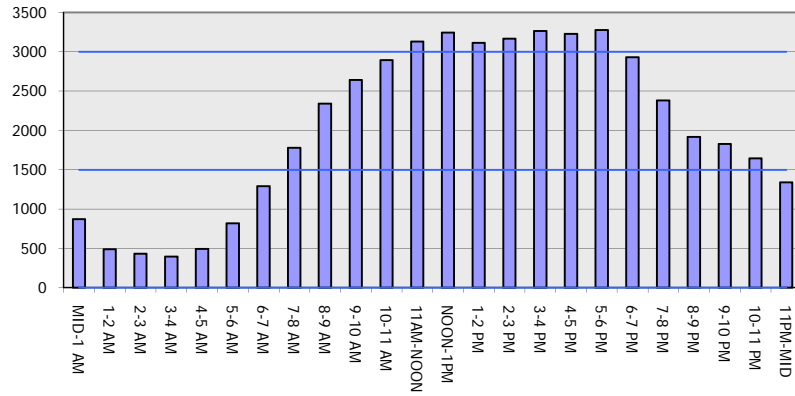
**OCTOBER**

Analyzed for 2009  
 Construction Season

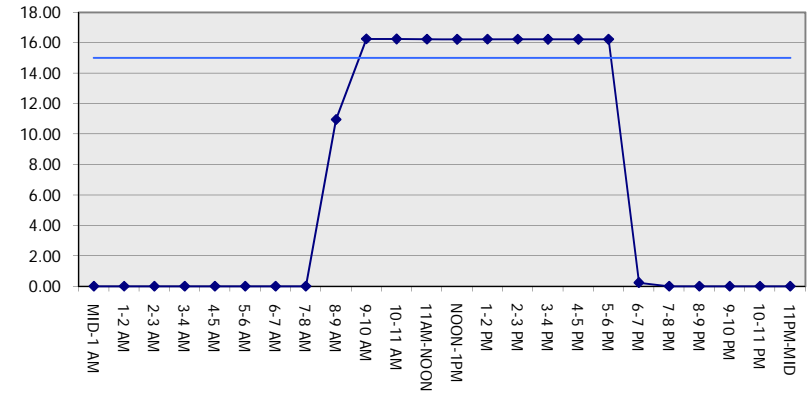
**GRAPHICAL REPRESENTATION OF TRAFFIC MODEL INPUT AND OUTPUT**

**SATURDAY WESTBOUND DIRECTION**

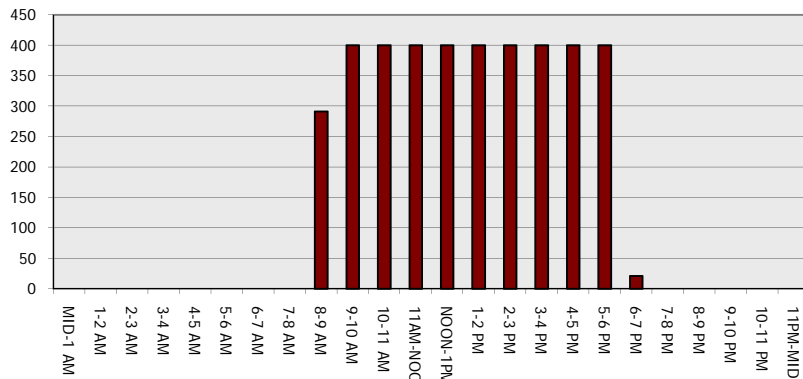
**Main Route - Traffic Demand (Vehicles Per Hour)**



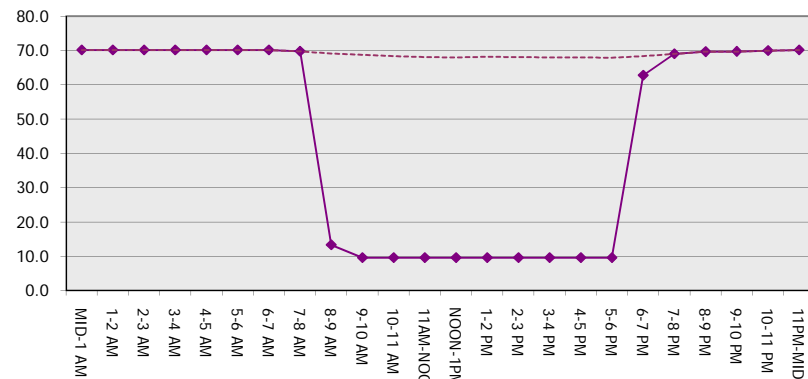
**Main Route Average Delay Per Vehicle (Minutes)**



**Main Route - Average Queue Length (Vehicles)**



**Main Route - Average Speed (MPH)**



<b>IH 94: CTH BB/RAWSON AVE TO STH 100/Ryan RD (MILWAUKEE COUNTY)</b> <b>OFF-PEAK DAY 2 LANE CLOSURE</b> <b>NO DIVERSION ROUTE (MAX QUEUE METHOD)</b>	<b>OCTOBER</b>
	Analyzed for 2009 Construction Season

**SUMMARY OF TRAFFIC MODEL OUTPUT**

SATURDAY EASTBOUND DIRECTION

TIME OF DAY	FLOWS AND CAPACITY IN VEH/HR							AVERAGE SPEEDS IN MPH			
	MAIN ROUTE		SITE CAPA CITY	FLOW		AV.DEL PER VEH (MINS)	AVERAGE QUEUE (VEH)	MAIN ROUTE		SITE	
	DEMAND FLOW	PCT HEAVY		MAIN ROUTE	'DIVER TED'			WITHOUT WORK ZONE	WITH WORK ZONE		
MID-1 AM	830	0.0	OFF	830	0	0.00	0	70.2	70.2	70.2	
1-2 AM	552	0.0	OFF	552	0	0.00	0	70.2	70.2	70.2	
2-3 AM	523	0.0	OFF	523	0	0.00	0	70.2	70.2	70.2	
3-4 AM	483	0.0	OFF	483	0	0.00	0	70.2	70.2	70.2	
4-5 AM	607	0.0	OFF	607	0	0.00	0	70.2	70.2	70.2	
5-6 AM	1034	0.0	OFF	1034	0	0.00	0	70.2	70.2	70.2	
6-7 AM	1409	0.0	OFF	1409	0	0.00	0	70.2	70.2	70.2	
7-8 AM	1632	0.0	OFF	1632	0	0.00	0	70.0	70.0	70.0	
8-9 AM	2149	0.0	1499	1907	242	8.92+	251	69.4	15.6	32.5	
9-10 AM	2700	0.0	1500	1500	1200	16.25+	400	68.7	9.6	32.5	
10-11 AM	2934	0.0	1500	1500	1434	16.24+	400	68.4	9.6	32.5	
11AM-NOON	3256	0.0	1500	1500	1756	16.22+	400	68.0	9.6	32.5	
NOON-1PM	3393	0.0	1500	1500	1893	16.22+	400	67.8	9.6	32.5	
1-2 PM	3045	0.0	1500	1500	1545	16.23+	400	68.2	9.6	32.5	
2-3 PM	3289	0.0	1500	1500	1789	16.22+	400	67.9	9.6	32.5	
3-4 PM	3306	0.0	1500	1500	1806	16.22+	400	67.9	9.6	32.5	
4-5 PM	3086	0.0	1500	1500	1586	16.23+	400	68.2	9.6	32.5	
5-6 PM	2941	0.0	1500	1500	1441	16.24+	400	68.4	9.6	32.5	
6-7 PM	2535	0.0	OFF	2535	0	0.26	23	68.9	62.7	62.7	
7-8 PM	2106	0.0	OFF	2106	0	0.00	0	69.4	69.4	69.4	
8-9 PM	1778	0.0	OFF	1778	0	0.00	0	69.8	69.8	69.8	
9-10 PM	1687	0.0	OFF	1687	0	0.00	0	69.9	69.9	69.9	
10-11 PM	1608	0.0	OFF	1608	0	0.00	0	70.0	70.0	70.0	
11PM-MID	1209	0.0	OFF	1209	0	0.00	0	70.2	70.2	70.2	

"OFF" INDICATES NO ROAD WORK (ALL LANES OPEN TO TRAFFIC)

+ INDICATES QUEUEING EXCEEDS USER-SPECIFIED MAXIMUM LIMIT

*----- SITE BREAKDOWN DELAYS -----*	
BREAKDOWN DURATION (MINS)	0
RANGE OF QUEUE DELAY - MIN (VEH-H) MAX	0.0
AV BREAKDOWNS PER DAY	0.00
AV QUEUE DELAY/DAY (VEH-H)	0.0
AV TOTAL DELAY/DAY (VEH-H)	0.0

*----- SITE ACCIDENT DELAYS -----*	
BREAKDOWN DURATION (MINS)	0
RANGE OF QUEUE DELAY - MIN (VEH-H) MAX	0
AV BREAKDOWNS PER DAY	0
AV QUEUE DELAY/DAY (VEH-H)	0
AV TOTAL DELAY/DAY (VEH-H)	0

AVERAGE ACCIDENT NUMBERS (PIA/DAY)	
MAIN ROUTE WITHOUT WORKS	0.0230
MAIN ROUTE WITH WORKS	0.0149
'DIVERSION'	0.0163

PIA: Personal Injury Accidents

ECONOMIC IMPACT ON ROAD USERS	
ROAD USER COSTS PER DAY	\$130,508
CONGESTED HOURS PER DAY*	10

\*Delays Exceeding User-Specified Maximum

**IH 94: CTH BB/RAWSON AVE TO STH 100/RYAN RD (MILWAUKEE COUNTY)**  
**OFF-PEAK DAY 2 LANE CLOSURE**  
**NO DIVERSION ROUTE (MAX QUEUE METHOD)**

**OCTOBER**

Analyzed for 2009  
 Construction Season

**GRAPHICAL REPRESENTATION OF TRAFFIC MODEL INPUT AND OUTPUT**  
**SATURDAY EASTBOUND DIRECTION**

