

<b>IH 94: CTH BB/RAWSON AVE TO STH 100/Ryan RD (MILWAUKEE COUNTY)</b> <b>OFF-PEAK DAY CLOSURE</b> <b>NO DIVERSION ROUTE (MAX QUEUE METHOD)</b>	<b>OCTOBER</b>
	Analyzed for 2009 Construction Season

**SUMMARY OF TRAFFIC MODEL OUTPUT**

SATURDAY WESTBOUND DIRECTION

TIME OF DAY	FLOWS AND CAPACITY IN VEH/HR						AVERAGE SPEEDS IN MPH			
	MAIN ROUTE		SITE CAPA CITY	FLOW		AV.DEL PER VEH (MINS)	AVERAGE QUEUE (VEH)	MAIN ROUTE		SITE
	DEMAND FLOW	PCT HEAVY		MAIN ROUTE	'DIVER TED'			WITHOUT WORK ZONE	WITH WORK ZONE	
MID-1 AM	869	0.0	OFF	869	0	0.00	0	70.2	70.2	70.2
1-2 AM	489	0.0	OFF	489	0	0.00	0	70.2	70.2	70.2
2-3 AM	431	0.0	OFF	431	0	0.00	0	70.2	70.2	70.2
3-4 AM	395	0.0	OFF	395	0	0.00	0	70.2	70.2	70.2
4-5 AM	493	0.0	OFF	493	0	0.00	0	70.2	70.2	70.2
5-6 AM	817	0.0	OFF	817	0	0.00	0	70.2	70.2	70.2
6-7 AM	1292	0.0	OFF	1292	0	0.00	0	70.2	70.2	70.2
7-8 AM	1779	0.0	OFF	1779	0	0.00	0	69.8	69.8	69.8
8-9 AM	2340	0.0	3000	2340	0	0.35	0	69.1	61.0	49.7
9-10 AM	2643	0.0	3000	2643	0	0.53	0	68.7	57.2	43.1
10-11 AM	2894	0.0	2999	2894	0	0.69	0	68.4	54.2	38.6
11AM-NOON	3128	0.0	2999	3128	0	1.65	53	68.1	42.0	36.9
NOON-1PM	3245	0.0	3000	3245	0	5.15	251	68.0	23.1	36.9
1-2 PM	3113	0.0	2999	3113	0	8.58	432	68.2	16.0	36.9
2-3 PM	3168	0.0	3000	3168	0	11.00	565	68.1	13.8	36.9
3-4 PM	3263	0.0	3000	3190	73	14.79+	774	68.0	12.0	36.9
4-5 PM	3228	0.0	3000	3001	227	16.16+	847	68.0	11.6	36.9
5-6 PM	3277	0.0	3000	3001	276	16.16+	847	67.9	11.6	36.9
6-7 PM	2932	0.0	OFF	2932	0	1.25	116	68.4	46.4	46.4
7-8 PM	2382	0.0	OFF	2382	0	0.00	0	69.1	69.1	69.1
8-9 PM	1915	0.0	OFF	1915	0	0.00	0	69.7	69.7	69.7
9-10 PM	1826	0.0	OFF	1826	0	0.00	0	69.7	69.7	69.7
10-11 PM	1645	0.0	OFF	1645	0	0.00	0	70.0	70.0	70.0
11PM-MID	1337	0.0	OFF	1337	0	0.00	0	70.2	70.2	70.2

"OFF" INDICATES NO ROAD WORK (ALL LANES OPEN TO TRAFFIC)

+ INDICATES QUEUEING EXCEEDS USER-SPECIFIED MAXIMUM LIMIT

*----- SITE BREAKDOWN DELAYS -----*	
BREAKDOWN DURATION (MINS)	0
RANGE OF QUEUE DELAY - MIN	0.0
(VEH-H) MAX	0.0
AV BREAKDOWNS PER DAY	0.00
AV QUEUE DELAY/DAY (VEH-H)	0.0
AV TOTAL DELAY/DAY (VEH-H)	0.0

*----- SITE ACCIDENT DELAYS -----*	
BREAKDOWN DURATION (MINS)	0
RANGE OF QUEUE DELAY - MIN	0
(VEH-H) MAX	0
AV BREAKDOWNS PER DAY	0
AV QUEUE DELAY/DAY (VEH-H)	0
AV TOTAL DELAY/DAY (VEH-H)	0

AVERAGE ACCIDENT NUMBERS (PIA/DAY)	
MAIN ROUTE WITHOUT WORKS	0.0234
MAIN ROUTE WITH WORKS	0.0211
'DIVERSION'	0.0006
PIA: Personal Injury Accidents	
IMPACTS ON ROAD USERS	
ROAD USER COSTS PER DAY	\$64,597
CONGESTED HOURS PER DAY*	3

\*Delays Exceeding User-Specified Maximum

**IH 94: CTH BB/RAWSON AVE TO STH 100/RYAN RD (MILWAUKEE COUNTY)**  
**OFF-PEAK DAY CLOSURE**  
**NO DIVERSION ROUTE (MAX QUEUE METHOD)**

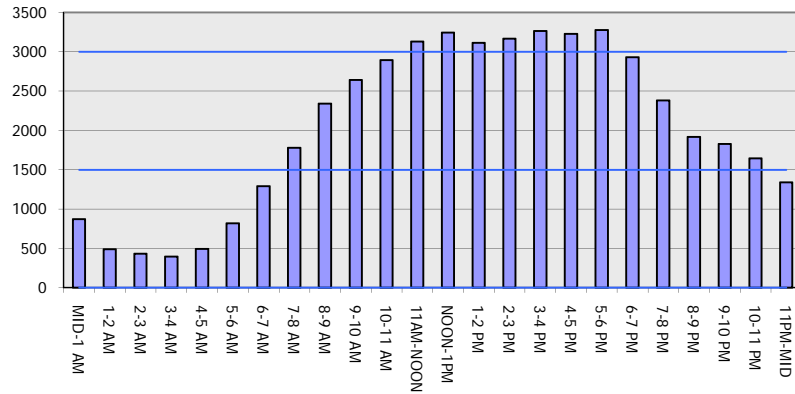
**OCTOBER**

Analyzed for 2009  
 Construction Season

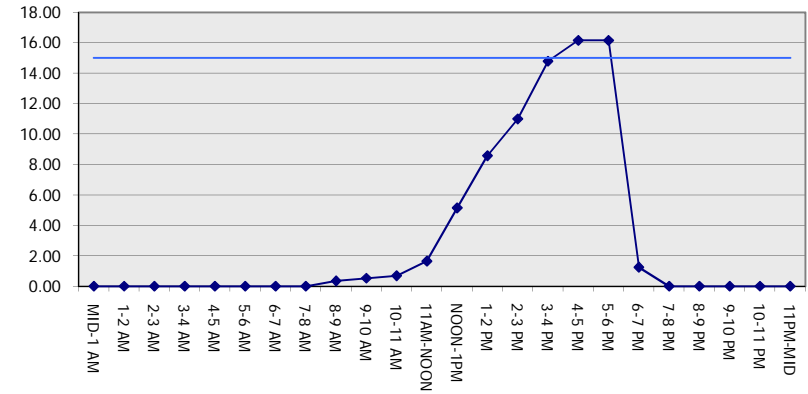
**GRAPHICAL REPRESENTATION OF TRAFFIC MODEL INPUT AND OUTPUT**

**SATURDAY WESTBOUND DIRECTION**

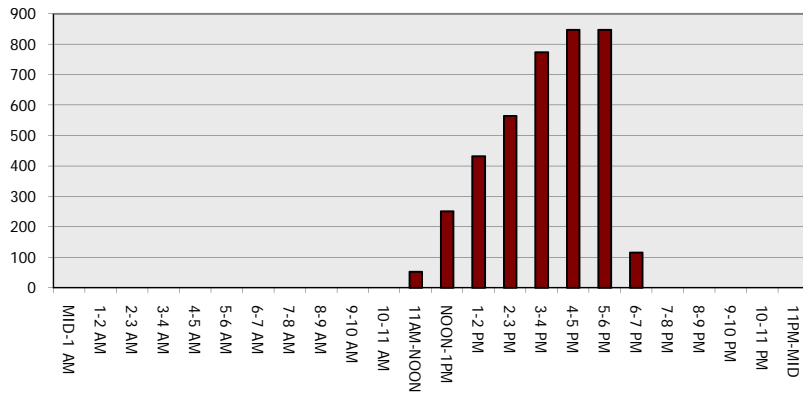
**Main Route - Traffic Demand (Vehicles Per Hour)**



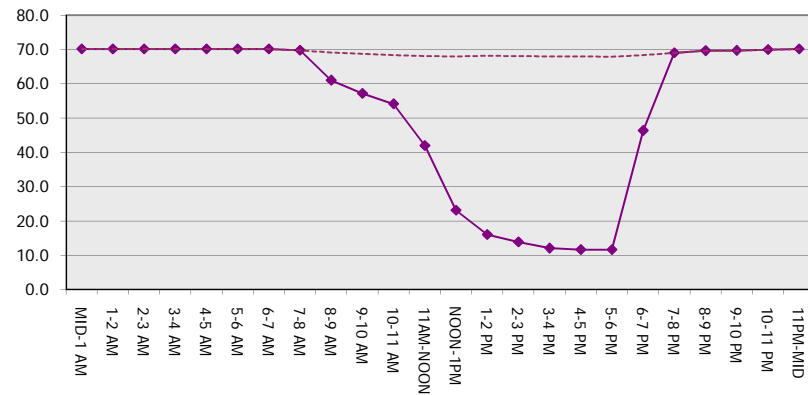
**Main Route Average Delay Per Vehicle (Minutes)**



**Main Route - Average Queue Length (Vehicles)**



**Main Route - Average Speed (MPH)**



<b>IH 94: CTH BB/RAWSON AVE TO STH 100/Ryan RD (MILWAUKEE COUNTY)</b> <b>OFF-PEAK DAY CLOSURE</b> <b>NO DIVERSION ROUTE (MAX QUEUE METHOD)</b>	<b>OCTOBER</b>
	Analyzed for 2009 Construction Season

**SUMMARY OF TRAFFIC MODEL OUTPUT**

SATURDAY EASTBOUND DIRECTION

TIME OF DAY	FLOWS AND CAPACITY IN VEH/HR							AVERAGE SPEEDS IN MPH			
	MAIN ROUTE		SITE CAPA CITY	FLOW		AV.DEL PER VEH (MINS)	AVERAGE QUEUE (VEH)	MAIN ROUTE		SITE	
	DEMAND FLOW	PCT HEAVY		MAIN ROUTE	'DIVER TED'			WITHOUT WORK ZONE	WITH WORK ZONE		
MID-1 AM	830	0.0	OFF	830	0	0.00	0	70.2	70.2	70.2	
1-2 AM	552	0.0	OFF	552	0	0.00	0	70.2	70.2	70.2	
2-3 AM	523	0.0	OFF	523	0	0.00	0	70.2	70.2	70.2	
3-4 AM	483	0.0	OFF	483	0	0.00	0	70.2	70.2	70.2	
4-5 AM	607	0.0	OFF	607	0	0.00	0	70.2	70.2	70.2	
5-6 AM	1034	0.0	OFF	1034	0	0.00	0	70.2	70.2	70.2	
6-7 AM	1409	0.0	OFF	1409	0	0.00	0	70.2	70.2	70.2	
7-8 AM	1632	0.0	OFF	1632	0	0.00	0	70.0	70.0	70.0	
8-9 AM	2149	0.0	3000	2149	0	0.35	0	69.4	61.2	49.7	
9-10 AM	2700	0.0	2999	2700	0	0.57	0	68.7	56.5	42.0	
10-11 AM	2934	0.0	2999	2934	0	0.72	0	68.4	53.6	37.9	
11AM-NOON	3256	0.0	3000	3256	0	2.59	115	68.0	34.3	36.9	
NOON-1PM	3393	0.0	3000	3393	0	8.83	460	67.8	16.0	36.9	
1-2 PM	3045	0.0	2999	3045	0	13.05	676	68.2	12.7	36.9	
2-3 PM	3289	0.0	3000	3132	157	15.33+	803	67.9	11.9	36.9	
3-4 PM	3306	0.0	3000	3006	300	16.16+	848	67.9	11.6	36.9	
4-5 PM	3086	0.0	3000	3012	74	16.13+	845	68.2	11.6	36.9	
5-6 PM	2941	0.0	3000	2936	5	15.86+	830	68.4	11.7	36.9	
6-7 PM	2535	0.0	OFF	2535	0	0.92	88	68.9	50.9	50.9	
7-8 PM	2106	0.0	OFF	2106	0	0.00	0	69.4	69.4	69.4	
8-9 PM	1778	0.0	OFF	1778	0	0.00	0	69.8	69.8	69.8	
9-10 PM	1687	0.0	OFF	1687	0	0.00	0	69.9	69.9	69.9	
10-11 PM	1608	0.0	OFF	1608	0	0.00	0	70.0	70.0	70.0	
11PM-MID	1209	0.0	OFF	1209	0	0.00	0	70.2	70.2	70.2	

"OFF" INDICATES NO ROAD WORK (ALL LANES OPEN TO TRAFFIC)

+ INDICATES QUEUEING EXCEEDS USER-SPECIFIED MAXIMUM LIMIT

*----- SITE BREAKDOWN DELAYS -----*	
BREAKDOWN DURATION (MINS)	0
RANGE OF QUEUE DELAY - MIN (VEH-H) MAX	0.0
AV BREAKDOWNS PER DAY	0.00
AV QUEUE DELAY/DAY (VEH-H)	0.0
AV TOTAL DELAY/DAY (VEH-H)	0.0

*----- SITE ACCIDENT DELAYS -----*	
BREAKDOWN DURATION (MINS)	0
RANGE OF QUEUE DELAY - MIN (VEH-H) MAX	0
AV BREAKDOWNS PER DAY	0
AV QUEUE DELAY/DAY (VEH-H)	0
AV TOTAL DELAY/DAY (VEH-H)	0

AVERAGE ACCIDENT NUMBERS (PIA/DAY)	
MAIN ROUTE WITHOUT WORKS	0.0230
MAIN ROUTE WITH WORKS	0.0208
'DIVERSION'	0.0006

PIA: Personal Injury Accidents

ECONOMIC IMPACT ON ROAD USERS	
ROAD USER COSTS PER DAY	\$75,273
CONGESTED HOURS PER DAY*	4

\*Delays Exceeding User-Specified Maximum

**IH 94: CTH BB/RAWSON AVE TO STH 100/RYAN RD (MILWAUKEE COUNTY)**  
**OFF-PEAK DAY CLOSURE**  
**NO DIVERSION ROUTE (MAX QUEUE METHOD)**

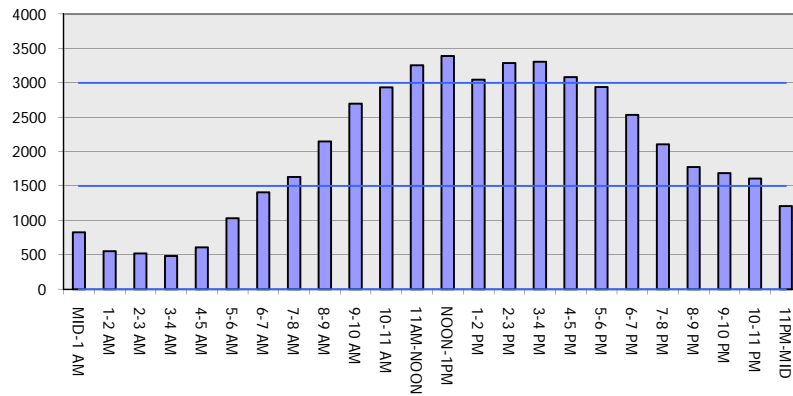
**OCTOBER**

Analyzed for 2009  
 Construction Season

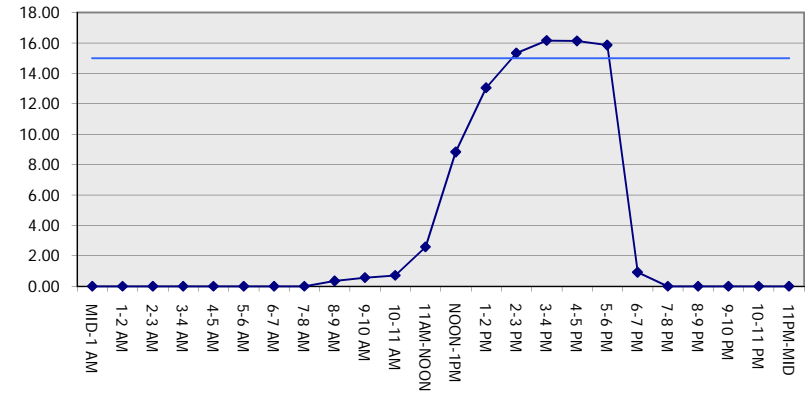
**GRAPHICAL REPRESENTATION OF TRAFFIC MODEL INPUT AND OUTPUT**

**SATURDAY EASTBOUND DIRECTION**

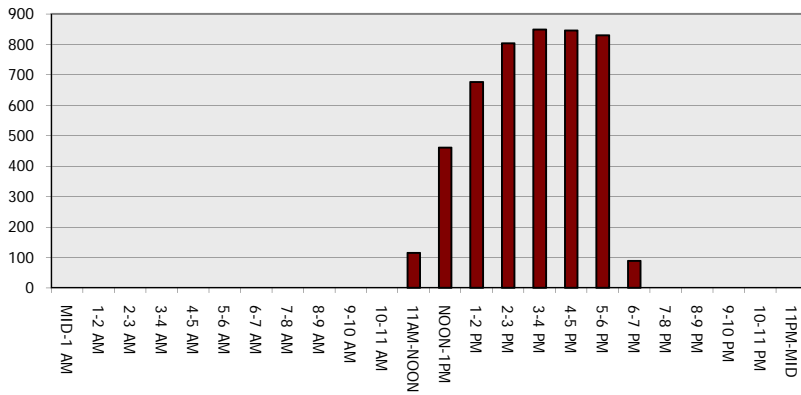
**Main Route - Traffic Demand (Vehicles Per Hour)**



**Main Route Average Delay Per Vehicle (Minutes)**



**Main Route - Average Queue Length (Vehicles)**



**Main Route - Average Speed (MPH)**

