

IH 94: CTH BB/RAWSON AVE TO STH 100/Ryan RD (MILWAUKEE COUNTY) OFF-PEAK DAY 2 LANE CLOSURE NO DIVERSION ROUTE (MAX QUEUE METHOD)	OCTOBER
	Analyzed for 2009 Construction Season

SUMMARY OF TRAFFIC MODEL OUTPUT

MON-THUR WESTBOUND DIRECTION

TIME OF DAY	FLOWS AND CAPACITY IN VEH/HR						AVERAGE SPEEDS IN MPH			
	MAIN ROUTE		SITE CAPA CITY	FLOW		AV.DEL PER VEH (MINS)	AVERAGE QUEUE (VEH)	MAIN ROUTE		SITE
	DEMAND FLOW	PCT HEAVY		MAIN ROUTE	'DIVER TED'			WITHOUT WORK ZONE	WITH WORK ZONE	
MID-1 AM	596	0.0	OFF	596	0	0.00	0	70.2	70.2	70.2
1-2 AM	357	0.0	OFF	357	0	0.00	0	70.2	70.2	70.2
2-3 AM	345	0.0	OFF	345	0	0.00	0	70.2	70.2	70.2
3-4 AM	397	0.0	OFF	397	0	0.00	0	70.2	70.2	70.2
4-5 AM	667	0.0	OFF	667	0	0.00	0	70.2	70.2	70.2
5-6 AM	1812	0.0	OFF	1812	0	0.00	0	69.8	69.8	69.8
6-7 AM	3543	0.0	OFF	3543	0	0.00	0	67.6	67.6	67.6
7-8 AM	3961	0.0	OFF	3961	0	0.00	0	65.1	65.1	65.1
8-9 AM	3290	0.0	OFF	3290	0	0.00	0	67.9	67.9	67.9
9-10 AM	2739	0.0	OFF	2739	0	0.00	0	68.6	68.6	68.6
10-11 AM	2647	0.0	1499	1853	794	13.26+	331	68.7	11.3	36.5
11AM-NOON	2666	0.0	1499	1500	1166	16.25+	399	68.7	9.6	32.5
NOON-1PM	2757	0.0	1500	1500	1257	16.25+	400	68.6	9.6	32.5
1-2 PM	2861	0.0	1500	1500	1361	16.24+	400	68.5	9.6	32.5
2-3 PM	3192	0.0	1500	1500	1692	16.23+	400	68.1	9.6	32.5
3-4 PM	3575	0.0	OFF	3575	0	0.35	25	67.6	59.7	59.7
4-5 PM	3388	0.0	OFF	3388	0	0.00	0	67.8	67.8	67.8
5-6 PM	3266	0.0	OFF	3266	0	0.00	0	68.0	68.0	68.0
6-7 PM	2757	0.0	OFF	2757	0	0.00	0	68.6	68.6	68.6
7-8 PM	2021	0.0	OFF	2021	0	0.00	0	69.6	69.6	69.6
8-9 PM	1657	0.0	OFF	1657	0	0.00	0	70.0	70.0	70.0
9-10 PM	1626	0.0	OFF	1626	0	0.00	0	70.0	70.0	70.0
10-11 PM	1281	0.0	OFF	1281	0	0.00	0	70.2	70.2	70.2
11PM-MID	904	0.0	OFF	904	0	0.00	0	70.2	70.2	70.2

"OFF" INDICATES NO ROAD WORK (ALL LANES OPEN TO TRAFFIC)

+ INDICATES QUEUEING EXCEEDS USER-SPECIFIED MAXIMUM LIMIT

----- SITE BREAKDOWN DELAYS -----	
BREAKDOWN DURATION (MINS)	0
RANGE OF QUEUE DELAY - MIN (VEH-H) MAX	0.0
AV BREAKDOWNS PER DAY	0.00
AV QUEUE DELAY/DAY (VEH-H)	0.0
AV TOTAL DELAY/DAY (VEH-H)	0.0

----- SITE ACCIDENT DELAYS -----	
BREAKDOWN DURATION (MINS)	0
RANGE OF QUEUE DELAY - MIN (VEH-H) MAX	0
AV BREAKDOWNS PER DAY	0
AV QUEUE DELAY/DAY (VEH-H)	0
AV TOTAL DELAY/DAY (VEH-H)	0

AVERAGE ACCIDENT NUMBERS (PIA/DAY)	
MAIN ROUTE WITHOUT WORKS	0.0250
MAIN ROUTE WITH WORKS	0.0215
'DIVERSION'	0.0069
PIA: Personal Injury Accidents	
IMPACTS ON ROAD USERS	
ROAD USER COSTS PER DAY	\$48,321
CONGESTED HOURS PER DAY*	5

*Delays Exceeding User-Specified Maximum

IH 94: CTH BB/RAWSON AVE TO STH 100/RYAN RD (MILWAUKEE COUNTY)
OFF-PEAK DAY 2 LANE CLOSURE
NO DIVERSION ROUTE (MAX QUEUE METHOD)

OCTOBER

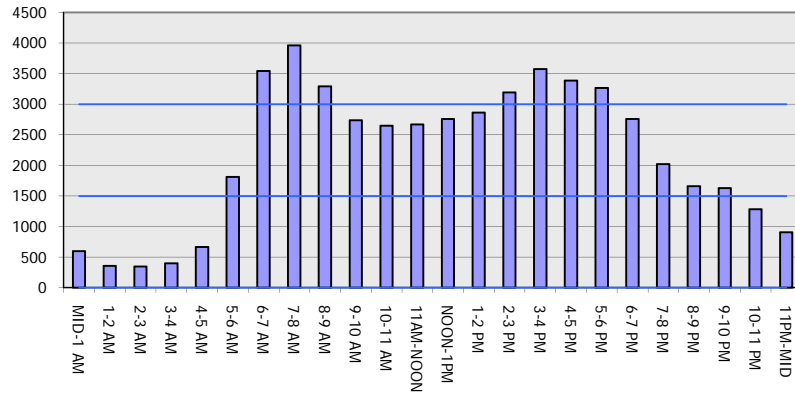
Analyzed for 2009
 Construction Season

GRAPHICAL REPRESENTATION OF TRAFFIC MODEL INPUT AND OUTPUT

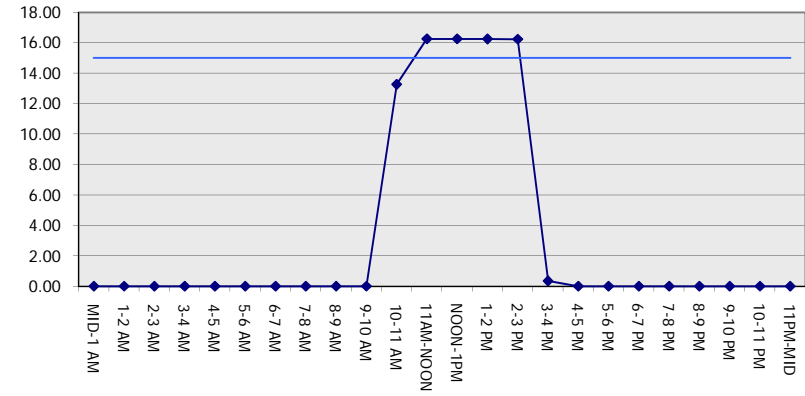
MON-THUR

WESTBOUND DIRECTION

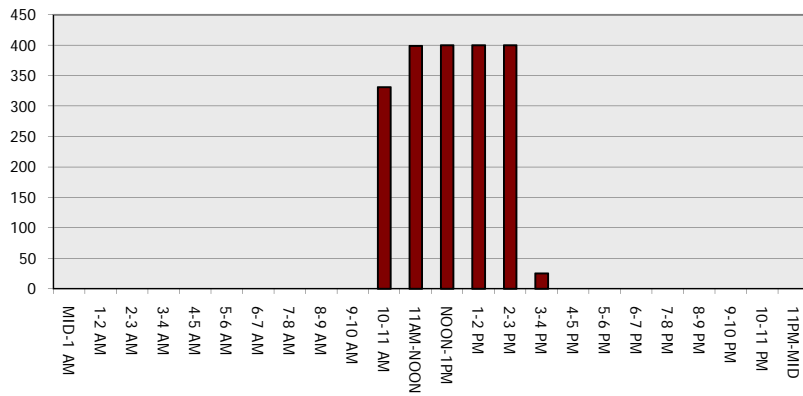
Main Route - Traffic Demand (Vehicles Per Hour)



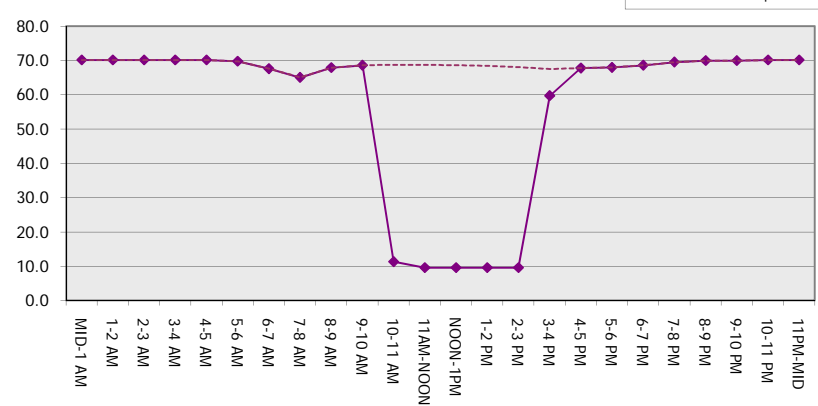
Main Route Average Delay Per Vehicle (Minutes)



Main Route - Average Queue Length (Vehicles)



Main Route - Average Speed (MPH)



IH 94: CTH BB/RAWSON AVE TO STH 100/Ryan RD (MILWAUKEE COUNTY) OFF-PEAK DAY 2 LANE CLOSURE NO DIVERSION ROUTE (MAX QUEUE METHOD)	OCTOBER
	Analyzed for 2009 Construction Season

SUMMARY OF TRAFFIC MODEL OUTPUT	
MON-THUR	EASTBOUND DIRECTION

TIME OF DAY	FLOWS AND CAPACITY IN VEH/HR						AVERAGE SPEEDS IN MPH			
	MAIN ROUTE		SITE CAPA CITY	FLOW		AV.DEL PER VEH (MINS)	AVERAGE QUEUE (VEH)	MAIN ROUTE		SITE
	DEMAND FLOW	PCT HEAVY		MAIN ROUTE	'DIVER TED'			WITHOUT WORK ZONE	WITH WORK ZONE	
MID-1 AM	535	0.0	OFF	535	0	0.00	0	70.2	70.2	70.2
1-2 AM	392	0.0	OFF	392	0	0.00	0	70.2	70.2	70.2
2-3 AM	383	0.0	OFF	383	0	0.00	0	70.2	70.2	70.2
3-4 AM	490	0.0	OFF	490	0	0.00	0	70.2	70.2	70.2
4-5 AM	913	0.0	OFF	913	0	0.00	0	70.2	70.2	70.2
5-6 AM	1992	0.0	OFF	1992	0	0.00	0	69.6	69.6	69.6
6-7 AM	3388	0.0	OFF	3388	0	0.00	0	67.8	67.8	67.8
7-8 AM	3068	0.0	OFF	3068	0	0.00	0	68.2	68.2	68.2
8-9 AM	2944	0.0	OFF	2944	0	0.00	0	68.4	68.4	68.4
9-10 AM	2621	0.0	OFF	2621	0	0.00	0	68.8	68.8	68.8
10-11 AM	2511	0.0	1499	1968	543	12.79+	322	68.9	11.7	33.3
11AM-NOON	2691	0.0	1499	1500	1191	16.25+	399	68.7	9.6	32.5
NOON-1PM	2904	0.0	1500	1500	1404	16.24+	400	68.4	9.6	32.5
1-2 PM	3101	0.0	1500	1500	1601	16.23+	400	68.2	9.6	32.5
2-3 PM	3616	0.0	1500	1500	2116	16.20+	400	67.4	9.6	32.5
3-4 PM	3993	0.0	OFF	3993	0	0.69	54	64.9	52.0	52.0
4-5 PM	4253	0.0	OFF	4253	0	0.00	0	63.1	63.1	63.1
5-6 PM	4286	0.0	OFF	4286	0	0.00	0	62.8	62.8	62.8
6-7 PM	3346	0.0	OFF	3346	0	0.00	0	67.9	67.9	67.9
7-8 PM	2383	0.0	OFF	2383	0	0.00	0	69.1	69.1	69.1
8-9 PM	1931	0.0	OFF	1931	0	0.00	0	69.6	69.6	69.6
9-10 PM	1749	0.0	OFF	1749	0	0.00	0	69.9	69.9	69.9
10-11 PM	1330	0.0	OFF	1330	0	0.00	0	70.2	70.2	70.2
11PM-MID	912	0.0	OFF	912	0	0.00	0	70.2	70.2	70.2

"OFF" INDICATES NO ROAD WORK (ALL LANES OPEN TO TRAFFIC)

+ INDICATES QUEUEING EXCEEDS USER-SPECIFIED MAXIMUM LIMIT

----- SITE BREAKDOWN DELAYS -----	
BREAKDOWN DURATION (MINS)	0
RANGE OF QUEUE DELAY - MIN (VEH-H) MAX	0.0
AV BREAKDOWNS PER DAY	0.00
AV QUEUE DELAY/DAY (VEH-H)	0.0
AV TOTAL DELAY/DAY (VEH-H)	0.0

----- SITE ACCIDENT DELAYS -----	
BREAKDOWN DURATION (MINS)	0
RANGE OF QUEUE DELAY - MIN (VEH-H) MAX	0
AV BREAKDOWNS PER DAY	0
AV QUEUE DELAY/DAY (VEH-H)	0
AV TOTAL DELAY/DAY (VEH-H)	0

AVERAGE ACCIDENT NUMBERS (PIA/DAY)	
MAIN ROUTE WITHOUT WORKS	0.0266
MAIN ROUTE WITH WORKS	0.0228
'DIVERSION'	0.0076

PIA: Personal Injury Accidents

ECONOMIC IMPACT ON ROAD USERS	
ROAD USER COSTS PER DAY	\$50,909
CONGESTED HOURS PER DAY*	5

*Delays Exceeding User-Specified Maximum

IH 94: CTH BB/RAWSON AVE TO STH 100/RYAN RD (MILWAUKEE COUNTY)
OFF-PEAK DAY 2 LANE CLOSURE
NO DIVERSION ROUTE (MAX QUEUE METHOD)

OCTOBER

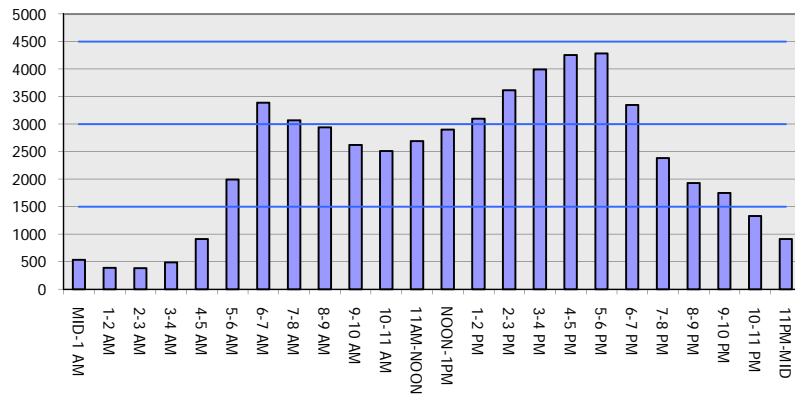
Analyzed for 2009
 Construction Season

GRAPHICAL REPRESENTATION OF TRAFFIC MODEL INPUT AND OUTPUT

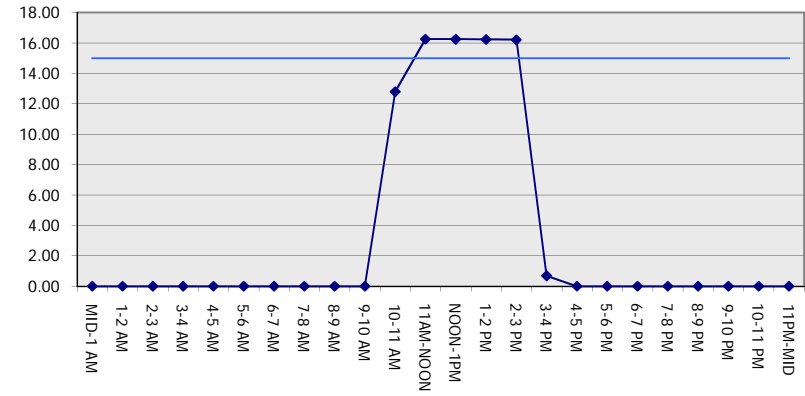
MON-THUR

EASTBOUND DIRECTION

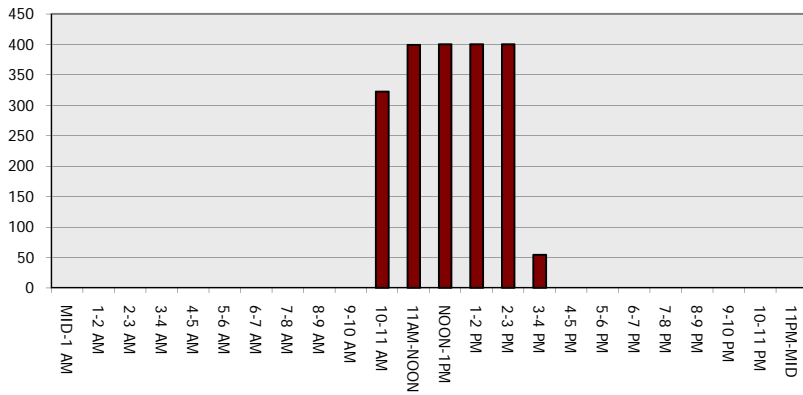
Main Route - Traffic Demand (Vehicles Per Hour)



Main Route Average Delay Per Vehicle (Minutes)



Main Route - Average Queue Length (Vehicles)



Main Route - Average Speed (MPH)

