

IH 94: CTH BB/RAWSON AVE TO STH 100/RYAN RD (MILWAUKEE COUNTY) OFF-PEAK DAY CLOSURE NO DIVERSION ROUTE (MAX QUEUE METHOD)	OCTOBER
	Analyzed for 2009 Construction Season

SUMMARY OF TRAFFIC MODEL OUTPUT

MON-THUR WESTBOUND DIRECTION

TIME OF DAY	FLOWS AND CAPACITY IN VEH/HR						AVERAGE SPEEDS IN MPH			
	MAIN ROUTE		SITE CAPA CITY	FLOW		AV.DEL PER VEH (MINS)	AVERAGE QUEUE (VEH)	MAIN ROUTE		SITE
	DEMAND FLOW	PCT HEAVY		MAIN ROUTE	'DIVER TED'			WITHOUT WORK ZONE	WITH WORK ZONE	
MID-1 AM	596	0.0	OFF	596	0	0.00	0	70.2	70.2	70.2
1-2 AM	357	0.0	OFF	357	0	0.00	0	70.2	70.2	70.2
2-3 AM	345	0.0	OFF	345	0	0.00	0	70.2	70.2	70.2
3-4 AM	397	0.0	OFF	397	0	0.00	0	70.2	70.2	70.2
4-5 AM	667	0.0	OFF	667	0	0.00	0	70.2	70.2	70.2
5-6 AM	1812	0.0	OFF	1812	0	0.00	0	69.8	69.8	69.8
6-7 AM	3543	0.0	OFF	3543	0	0.00	0	67.6	67.6	67.6
7-8 AM	3961	0.0	OFF	3961	0	0.00	0	65.1	65.1	65.1
8-9 AM	3290	0.0	OFF	3290	0	0.00	0	67.9	67.9	67.9
9-10 AM	2739	0.0	OFF	2739	0	0.00	0	68.6	68.6	68.6
10-11 AM	2647	0.0	3000	2647	0	0.53	0	68.7	57.1	43.0
11AM-NOON	2666	0.0	3000	2666	0	0.54	0	68.7	56.9	42.6
NOON-1PM	2757	0.0	3000	2757	0	0.60	0	68.6	55.8	40.9
1-2 PM	2861	0.0	2999	2861	0	0.67	0	68.5	54.5	39.1
2-3 PM	3192	0.0	2999	3192	0	1.93	73	68.1	39.3	36.9
3-4 PM	3575	0.0	OFF	3575	0	0.12	7	67.6	64.6	64.6
4-5 PM	3388	0.0	OFF	3388	0	0.00	0	67.8	67.8	67.8
5-6 PM	3266	0.0	OFF	3266	0	0.00	0	68.0	68.0	68.0
6-7 PM	2757	0.0	OFF	2757	0	0.00	0	68.6	68.6	68.6
7-8 PM	2021	0.0	OFF	2021	0	0.00	0	69.6	69.6	69.6
8-9 PM	1657	0.0	OFF	1657	0	0.00	0	70.0	70.0	70.0
9-10 PM	1626	0.0	OFF	1626	0	0.00	0	70.0	70.0	70.0
10-11 PM	1281	0.0	OFF	1281	0	0.00	0	70.2	70.2	70.2
11PM-MID	904	0.0	OFF	904	0	0.00	0	70.2	70.2	70.2

"OFF" INDICATES NO ROAD WORK (ALL LANES OPEN TO TRAFFIC)

----- SITE BREAKDOWN DELAYS -----	
BREAKDOWN DURATION (MINS)	0
RANGE OF QUEUE DELAY - MIN (VEH-H) MAX	0.0
AV BREAKDOWNS PER DAY	0.00
AV QUEUE DELAY/DAY (VEH-H)	0.0
AV TOTAL DELAY/DAY (VEH-H)	0.0

----- SITE ACCIDENT DELAYS -----	
BREAKDOWN DURATION (MINS)	0
RANGE OF QUEUE DELAY - MIN (VEH-H) MAX	0
AV BREAKDOWNS PER DAY	0
AV QUEUE DELAY/DAY (VEH-H)	0
AV TOTAL DELAY/DAY (VEH-H)	0

AVERAGE ACCIDENT NUMBERS (PIA/DAY)	
MAIN ROUTE WITHOUT WORKS	0.0250
MAIN ROUTE WITH WORKS	0.0240
'DIVERSION'	0.0000
PIA: Personal Injury Accidents	
IMPACTS ON ROAD USERS	
ROAD USER COSTS PER DAY	\$2,165
CONGESTED HOURS PER DAY*	0

*Delays Exceeding User-Specified Maximum

IH 94: CTH BB/RAWSON AVE TO STH 100/RYAN RD (MILWAUKEE COUNTY)
OFF-PEAK DAY CLOSURE
NO DIVERSION ROUTE (MAX QUEUE METHOD)

OCTOBER

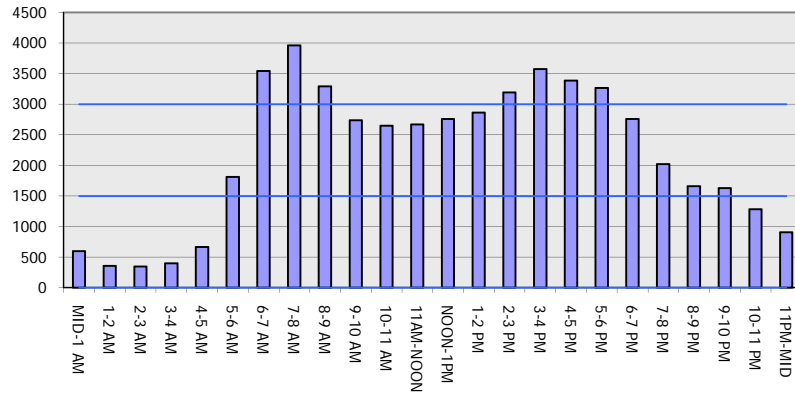
Analyzed for 2009
 Construction Season

GRAPHICAL REPRESENTATION OF TRAFFIC MODEL INPUT AND OUTPUT

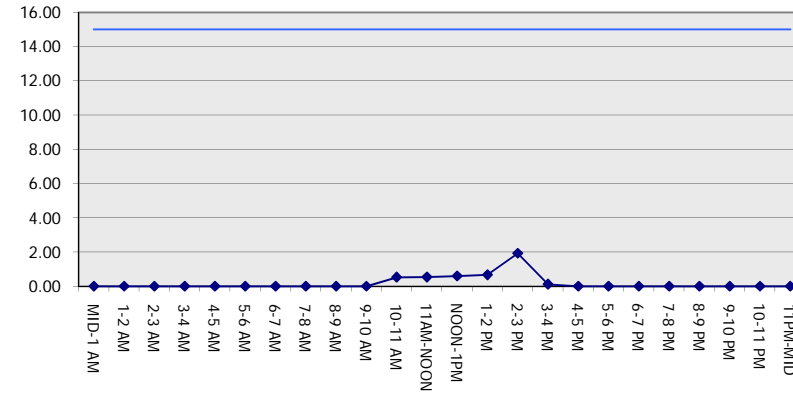
MON-THUR

WESTBOUND DIRECTION

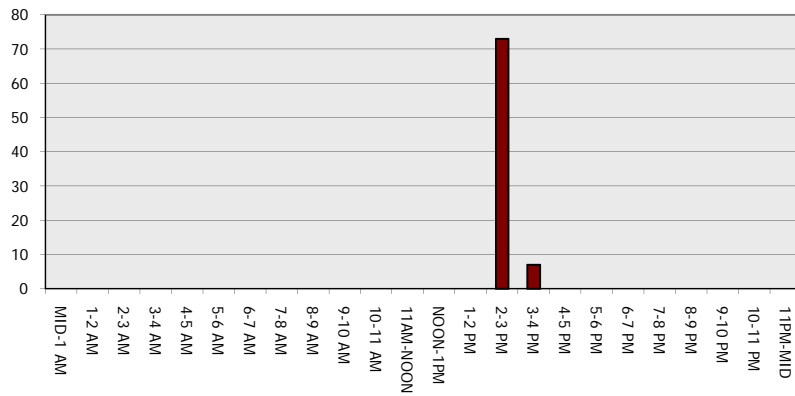
Main Route - Traffic Demand (Vehicles Per Hour)



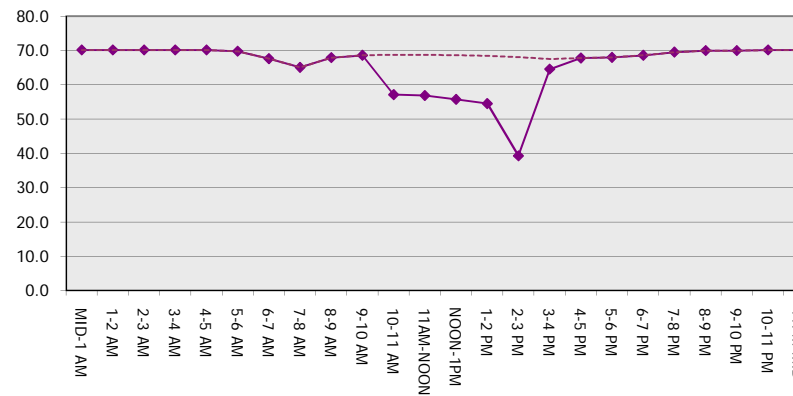
Main Route Average Delay Per Vehicle (Minutes)



Main Route - Average Queue Length (Vehicles)



Main Route - Average Speed (MPH)



IH 94: CTH BB/RAWSON AVE TO STH 100/Ryan RD (MILWAUKEE COUNTY) OFF-PEAK DAY CLOSURE NO DIVERSION ROUTE (MAX QUEUE METHOD)	OCTOBER
	Analyzed for 2009 Construction Season

SUMMARY OF TRAFFIC MODEL OUTPUT

MON-THUR EASTBOUND DIRECTION

TIME OF DAY	FLOWS AND CAPACITY IN VEH/HR							AVERAGE SPEEDS IN MPH		
	MAIN ROUTE		SITE CAPA CITY	FLOW		AV.DEL PER VEH (MINS)	AVERAGE QUEUE (VEH)	MAIN ROUTE		SITE
	DEMAND FLOW	PCT HEAVY		MAIN ROUTE	'DIVER TED'			WITHOUT WORK ZONE	WITH WORK ZONE	
MID-1 AM	535	0.0	OFF	535	0	0.00	0	70.2	70.2	70.2
1-2 AM	392	0.0	OFF	392	0	0.00	0	70.2	70.2	70.2
2-3 AM	383	0.0	OFF	383	0	0.00	0	70.2	70.2	70.2
3-4 AM	490	0.0	OFF	490	0	0.00	0	70.2	70.2	70.2
4-5 AM	913	0.0	OFF	913	0	0.00	0	70.2	70.2	70.2
5-6 AM	1992	0.0	OFF	1992	0	0.00	0	69.6	69.6	69.6
6-7 AM	3388	0.0	OFF	3388	0	0.00	0	67.8	67.8	67.8
7-8 AM	3068	0.0	OFF	3068	0	0.00	0	68.2	68.2	68.2
8-9 AM	2944	0.0	OFF	2944	0	0.00	0	68.4	68.4	68.4
9-10 AM	2621	0.0	OFF	2621	0	0.00	0	68.8	68.8	68.8
10-11 AM	2511	0.0	3000	2511	0	0.44	0	68.9	58.9	46.0
11AM-NOON	2691	0.0	3000	2691	0	0.56	0	68.7	56.6	42.2
NOON-1PM	2904	0.0	2999	2904	0	0.70	0	68.4	54.0	38.4
1-2 PM	3101	0.0	2999	3101	0	1.22	28	68.2	46.7	36.9
2-3 PM	3616	0.0	3000	3616	0	6.85	380	67.4	19.3	36.9
3-4 PM	3993	0.0	OFF	3993	0	1.51	128	64.9	42.0	42.0
4-5 PM	4253	0.0	OFF	4253	0	0.00	0	63.1	63.1	63.1
5-6 PM	4286	0.0	OFF	4286	0	0.00	0	62.8	62.8	62.8
6-7 PM	3346	0.0	OFF	3346	0	0.00	0	67.9	67.9	67.9
7-8 PM	2383	0.0	OFF	2383	0	0.00	0	69.1	69.1	69.1
8-9 PM	1931	0.0	OFF	1931	0	0.00	0	69.6	69.6	69.6
9-10 PM	1749	0.0	OFF	1749	0	0.00	0	69.9	69.9	69.9
10-11 PM	1330	0.0	OFF	1330	0	0.00	0	70.2	70.2	70.2
11PM-MID	912	0.0	OFF	912	0	0.00	0	70.2	70.2	70.2

"OFF" INDICATES NO ROAD WORK (ALL LANES OPEN TO TRAFFIC)

----- SITE BREAKDOWN DELAYS -----	
BREAKDOWN DURATION (MINS)	0
RANGE OF QUEUE DELAY - MIN (VEH-H) MAX	0.0
AV BREAKDOWNS PER DAY	0.00
AV QUEUE DELAY/DAY (VEH-H)	0.0
AV TOTAL DELAY/DAY (VEH-H)	0.0

----- SITE ACCIDENT DELAYS -----	
BREAKDOWN DURATION (MINS)	0
RANGE OF QUEUE DELAY - MIN (VEH-H) MAX	0
AV BREAKDOWNS PER DAY	0
AV QUEUE DELAY/DAY (VEH-H)	0
AV TOTAL DELAY/DAY (VEH-H)	0

AVERAGE ACCIDENT NUMBERS (PIA/DAY)	
MAIN ROUTE WITHOUT WORKS	0.0266
MAIN ROUTE WITH WORKS	0.0256
'DIVERSION'	0.0000

PIA: Personal Injury Accidents

ECONOMIC IMPACT ON ROAD USERS	
ROAD USER COSTS PER DAY	\$6,531
CONGESTED HOURS PER DAY*	0

*Delays Exceeding User-Specified Maximum

IH 94: CTH BB/RAWSON AVE TO STH 100/RYAN RD (MILWAUKEE COUNTY)
OFF-PEAK DAY CLOSURE
NO DIVERSION ROUTE (MAX QUEUE METHOD)

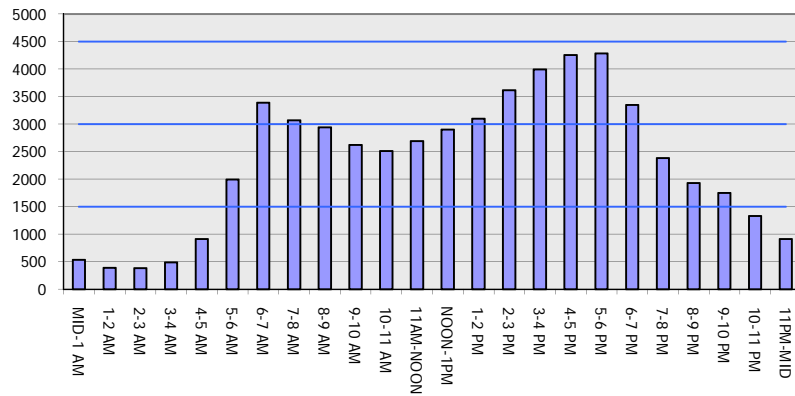
OCTOBER

Analyzed for 2009
 Construction Season

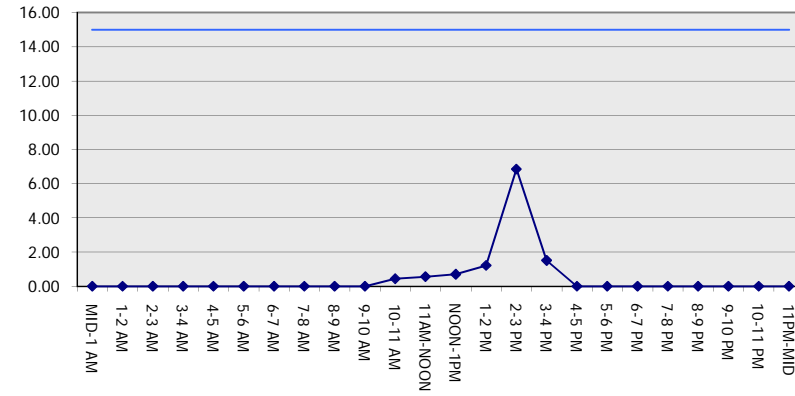
GRAPHICAL REPRESENTATION OF TRAFFIC MODEL INPUT AND OUTPUT

MON-THUR EASTBOUND DIRECTION

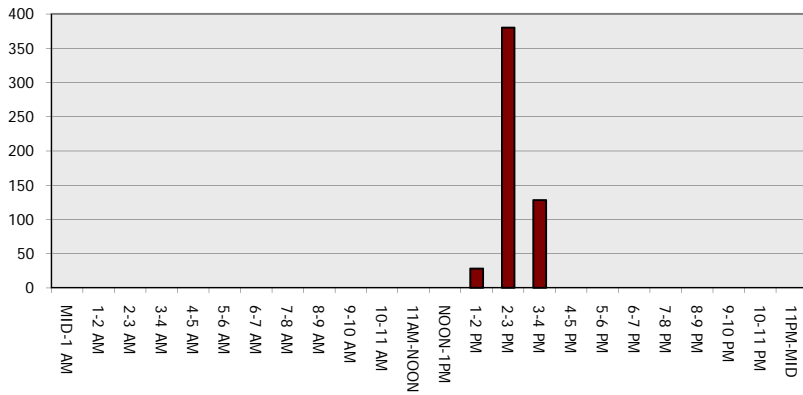
Main Route - Traffic Demand (Vehicles Per Hour)



Main Route Average Delay Per Vehicle (Minutes)



Main Route - Average Queue Length (Vehicles)



Main Route - Average Speed (MPH)

