

IH 94: CTH BB/RAWSON AVE TO STH 100/Ryan RD (MILWAUKEE COUNTY) OFF-PEAK DAY 2 LANE CLOSURE NO DIVERSION ROUTE (MAX QUEUE METHOD)	OCTOBER
	Analyzed for 2009 Construction Season

SUMMARY OF TRAFFIC MODEL OUTPUT

FRIDAY WESTBOUND DIRECTION

TIME OF DAY	FLOWS AND CAPACITY IN VEH/HR						AVERAGE SPEEDS IN MPH			
	MAIN ROUTE		SITE CAPA CITY	FLOW		AV.DEL PER VEH (MINS)	AVERAGE QUEUE (VEH)	MAIN ROUTE		SITE
	DEMAND FLOW	PCT HEAVY		MAIN ROUTE	'DIVER TED'			WITHOUT WORK ZONE	WITH WORK ZONE	
MID-1 AM	718	0.0	OFF	718	0	0.00	0	70.2	70.2	70.2
1-2 AM	460	0.0	OFF	460	0	0.00	0	70.2	70.2	70.2
2-3 AM	430	0.0	OFF	430	0	0.00	0	70.2	70.2	70.2
3-4 AM	492	0.0	OFF	492	0	0.00	0	70.2	70.2	70.2
4-5 AM	676	0.0	OFF	676	0	0.00	0	70.2	70.2	70.2
5-6 AM	1852	0.0	OFF	1852	0	0.00	0	69.7	69.7	69.7
6-7 AM	3571	0.0	OFF	3571	0	0.00	0	67.6	67.6	67.6
7-8 AM	3984	0.0	OFF	3984	0	0.00	0	65.0	65.0	65.0
8-9 AM	3355	0.0	OFF	3355	0	0.00	0	67.9	67.9	67.9
9-10 AM	2933	0.0	OFF	2933	0	0.00	0	68.4	68.4	68.4
10-11 AM	3083	0.0	1499	1528	1555	15.69+	393	68.2	9.8	39.1
11AM-NOON	3244	0.0	1506	1533	1710	15.06+	394	68.0	10.2	38.8
NOON-1PM	3400	0.0	1499	1663	1737	14.24+	377	67.8	10.7	38.1
1-2 PM	3423	0.0	1499	1596	1827	15.88+	393	67.8	9.7	33.3
2-3 PM	3923	0.0	1500	1500	2423	16.03+	400	65.3	9.6	34.0
3-4 PM	4104	0.0	OFF	4104	0	0.36	25	64.1	56.9	56.9
4-5 PM	3875	0.0	OFF	3875	0	0.00	0	65.7	65.7	65.7
5-6 PM	3908	0.0	OFF	3908	0	0.00	0	65.5	65.5	65.5
6-7 PM	3513	0.0	OFF	3513	0	0.00	0	67.7	67.7	67.7
7-8 PM	2958	0.0	OFF	2958	0	0.00	0	68.4	68.4	68.4
8-9 PM	2359	0.0	OFF	2359	0	0.00	0	69.1	69.1	69.1
9-10 PM	2229	0.0	OFF	2229	0	0.00	0	69.2	69.2	69.2
10-11 PM	1771	0.0	OFF	1771	0	0.00	0	69.9	69.9	69.9
11PM-MID	1350	0.0	OFF	1350	0	0.00	0	70.2	70.2	70.2

"OFF" INDICATES NO ROAD WORK (ALL LANES OPEN TO TRAFFIC)

+ INDICATES QUEUEING EXCEEDS USER-SPECIFIED MAXIMUM LIMIT

----- SITE BREAKDOWN DELAYS -----	
BREAKDOWN DURATION (MINS)	0
RANGE OF QUEUE DELAY - MIN (VEH-H) MAX	0.0
AV BREAKDOWNS PER DAY	0.00
AV QUEUE DELAY/DAY (VEH-H)	0.0
AV TOTAL DELAY/DAY (VEH-H)	0.0

----- SITE ACCIDENT DELAYS -----	
BREAKDOWN DURATION (MINS)	0
RANGE OF QUEUE DELAY - MIN (VEH-H) MAX	0
AV BREAKDOWNS PER DAY	0
AV QUEUE DELAY/DAY (VEH-H)	0
AV TOTAL DELAY/DAY (VEH-H)	0

AVERAGE ACCIDENT NUMBERS (PIA/DAY)	
MAIN ROUTE WITHOUT WORKS	0.0294
MAIN ROUTE WITH WORKS	0.0245
'DIVERSION'	0.0102
PIA: Personal Injury Accidents	
IMPACTS ON ROAD USERS	
ROAD USER COSTS PER DAY	\$58,591
CONGESTED HOURS PER DAY*	5

*Delays Exceeding User-Specified Maximum

IH 94: CTH BB/RAWSON AVE TO STH 100/RYAN RD (MILWAUKEE COUNTY)
OFF-PEAK DAY 2 LANE CLOSURE
NO DIVERSION ROUTE (MAX QUEUE METHOD)

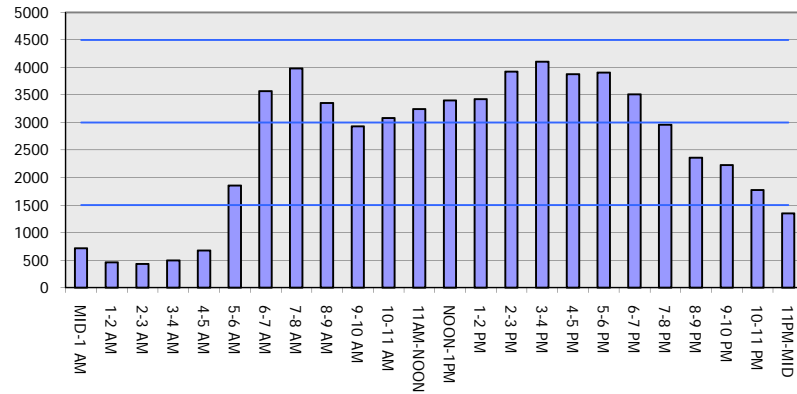
OCTOBER

Analyzed for 2009
 Construction Season

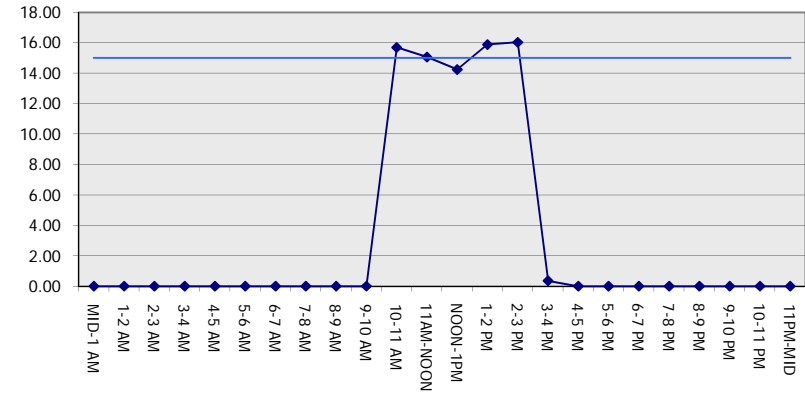
GRAPHICAL REPRESENTATION OF TRAFFIC MODEL INPUT AND OUTPUT

FRIDAY WESTBOUND DIRECTION

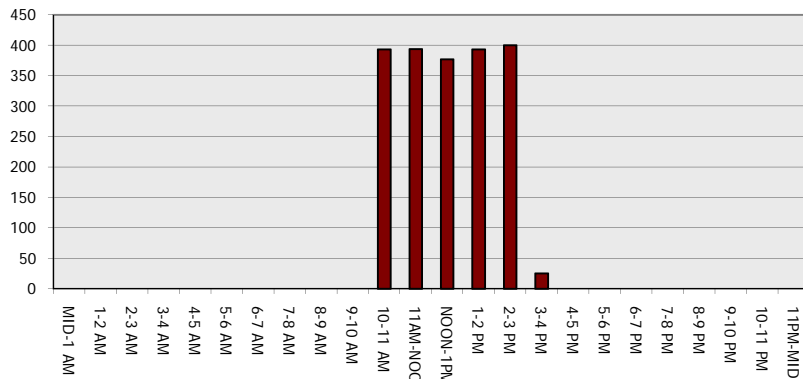
Main Route - Traffic Demand (Vehicles Per Hour)



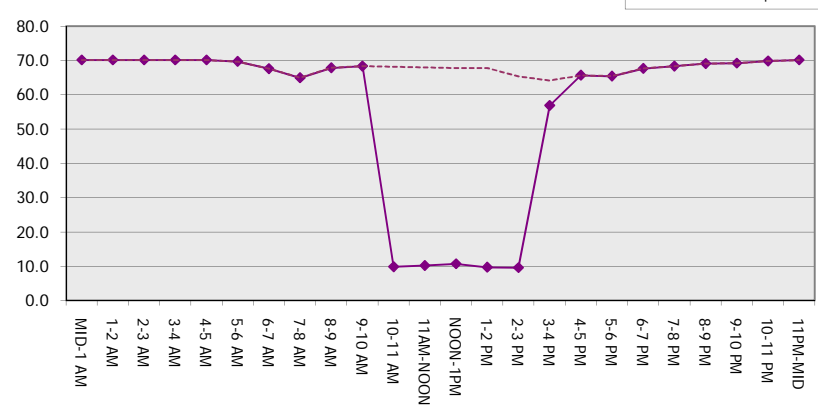
Main Route Average Delay Per Vehicle (Minutes)



Main Route - Average Queue Length (Vehicles)



Main Route - Average Speed (MPH)



IH 94: CTH BB/RAWSON AVE TO STH 100/Ryan RD (MILWAUKEE COUNTY) OFF-PEAK DAY 2 LANE CLOSURE NO DIVERSION ROUTE (MAX QUEUE METHOD)	OCTOBER
	Analyzed for 2009 Construction Season

SUMMARY OF TRAFFIC MODEL OUTPUT

FRIDAY EASTBOUND DIRECTION

TIME OF DAY	FLOWS AND CAPACITY IN VEH/HR						AVERAGE SPEEDS IN MPH			
	MAIN ROUTE		SITE CAPA CITY	FLOW		AV.DEL PER VEH (MINS)	AVERAGE QUEUE (VEH)	MAIN ROUTE		SITE
	DEMAND FLOW	PCT HEAVY		MAIN ROUTE	'DIVER TED'			WITHOUT WORK ZONE	WITH WORK ZONE	
MID-1 AM	626	0.0	OFF	626	0	0.00	0	70.2	70.2	70.2
1-2 AM	460	0.0	OFF	460	0	0.00	0	70.2	70.2	70.2
2-3 AM	446	0.0	OFF	446	0	0.00	0	70.2	70.2	70.2
3-4 AM	585	0.0	OFF	585	0	0.00	0	70.2	70.2	70.2
4-5 AM	963	0.0	OFF	963	0	0.00	0	70.2	70.2	70.2
5-6 AM	1928	0.0	OFF	1928	0	0.00	0	69.6	69.6	69.6
6-7 AM	3254	0.0	OFF	3254	0	0.00	0	68.0	68.0	68.0
7-8 AM	3218	0.0	OFF	3218	0	0.00	0	68.1	68.1	68.1
8-9 AM	2844	0.0	OFF	2844	0	0.00	0	68.5	68.5	68.5
9-10 AM	2702	0.0	OFF	2702	0	0.00	0	68.7	68.7	68.7
10-11 AM	2767	0.0	1499	1800	967	13.54+	339	68.6	11.1	37.4
11AM-NOON	2982	0.0	1499	1500	1482	16.10+	399	68.3	9.6	35.0
NOON-1PM	3254	0.0	1500	1500	1754	16.09+	400	68.0	9.6	35.0
1-2 PM	3477	0.0	1500	1500	1977	16.08+	400	67.7	9.6	35.0
2-3 PM	3983	0.0	1500	1500	2483	15.97+	400	65.0	9.6	35.0
3-4 PM	4222	0.0	OFF	4222	0	0.35	25	63.3	56.4	56.4
4-5 PM	4535	0.0	OFF	4535	0	0.00	0	61.2	61.2	61.2
5-6 PM	4435	0.0	OFF	4435	0	0.00	0	61.9	61.9	61.9
6-7 PM	3494	0.0	OFF	3494	0	0.00	0	67.7	67.7	67.7
7-8 PM	2625	0.0	OFF	2625	0	0.00	0	68.8	68.8	68.8
8-9 PM	2044	0.0	OFF	2044	0	0.00	0	69.5	69.5	69.5
9-10 PM	1984	0.0	OFF	1984	0	0.00	0	69.6	69.6	69.6
10-11 PM	1644	0.0	OFF	1644	0	0.00	0	70.0	70.0	70.0
11PM-MID	1204	0.0	OFF	1204	0	0.00	0	70.2	70.2	70.2

"OFF" INDICATES NO ROAD WORK (ALL LANES OPEN TO TRAFFIC)

+ INDICATES QUEUEING EXCEEDS USER-SPECIFIED MAXIMUM LIMIT

----- SITE BREAKDOWN DELAYS -----	
BREAKDOWN DURATION (MINS)	0
RANGE OF QUEUE DELAY - MIN	0.0
(VEH-H) MAX	0.0
AV BREAKDOWNS PER DAY	0.00
AV QUEUE DELAY/DAY (VEH-H)	0.0
AV TOTAL DELAY/DAY (VEH-H)	0.0

----- SITE ACCIDENT DELAYS -----	
BREAKDOWN DURATION (MINS)	0
RANGE OF QUEUE DELAY - MIN	0
(VEH-H) MAX	0
AV BREAKDOWNS PER DAY	0
AV QUEUE DELAY/DAY (VEH-H)	0
AV TOTAL DELAY/DAY (VEH-H)	0

AVERAGE ACCIDENT NUMBERS (PIA/DAY)	
MAIN ROUTE WITHOUT WORKS	0.0285
MAIN ROUTE WITH WORKS	0.0238
'DIVERSION'	0.0096

PIA: Personal Injury Accidents

ECONOMIC IMPACT ON ROAD USERS	
ROAD USER COSTS PER DAY	\$57,364
CONGESTED HOURS PER DAY*	5

*Delays Exceeding User-Specified Maximum

IH 94: CTH BB/RAWSON AVE TO STH 100/RYAN RD (MILWAUKEE COUNTY)
OFF-PEAK DAY 2 LANE CLOSURE
NO DIVERSION ROUTE (MAX QUEUE METHOD)

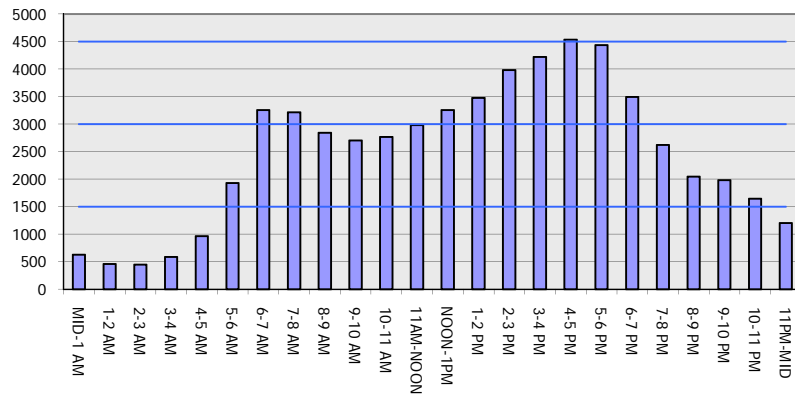
OCTOBER

Analyzed for 2009
 Construction Season

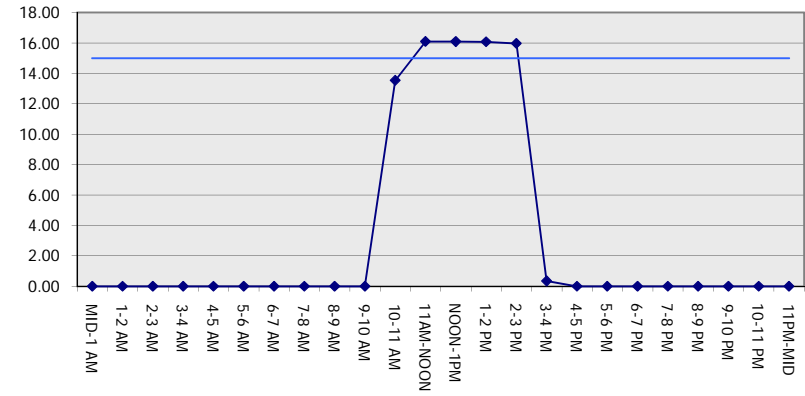
GRAPHICAL REPRESENTATION OF TRAFFIC MODEL INPUT AND OUTPUT

FRIDAY EASTBOUND DIRECTION

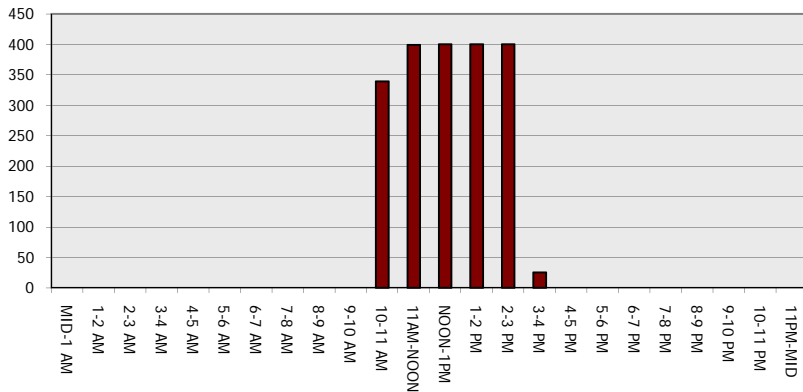
Main Route - Traffic Demand (Vehicles Per Hour)



Main Route Average Delay Per Vehicle (Minutes)



Main Route - Average Queue Length (Vehicles)



Main Route - Average Speed (MPH)

