

<b>IH 94: CTH BB/RAWSON AVE TO STH 100/RYAN RD (MILWAUKEE COUNTY)</b> <b>OFF-PEAK DAY CLOSURE</b> <b>NO DIVERSION ROUTE (MAX QUEUE METHOD)</b>	<b>AUGUST</b>
	Analyzed for 2009 Construction Season

**SUMMARY OF TRAFFIC MODEL OUTPUT**

SUNDAY WESTBOUND DIRECTION

TIME OF DAY	FLOWS AND CAPACITY IN VEH/HR						AVERAGE SPEEDS IN MPH			
	MAIN ROUTE		SITE CAPA CITY	FLOW		AV.DEL PER VEH (MINS)	AVERAGE QUEUE (VEH)	MAIN ROUTE		SITE
	DEMAND FLOW	PCT HEAVY		MAIN ROUTE	'DIVER TED'			WITHOUT WORK ZONE	WITH WORK ZONE	
MID-1 AM	914	0.0	OFF	914	0	0.00	0	70.2	70.2	70.2
1-2 AM	516	0.0	OFF	516	0	0.00	0	70.2	70.2	70.2
2-3 AM	353	0.0	OFF	353	0	0.00	0	70.2	70.2	70.2
3-4 AM	256	0.0	OFF	256	0	0.00	0	70.2	70.2	70.2
4-5 AM	282	0.0	OFF	282	0	0.00	0	70.2	70.2	70.2
5-6 AM	449	0.0	OFF	449	0	0.00	0	70.2	70.2	70.2
6-7 AM	711	0.0	OFF	711	0	0.00	0	70.2	70.2	70.2
7-8 AM	877	0.0	OFF	877	0	0.00	0	70.2	70.2	70.2
8-9 AM	1317	0.0	OFF	1317	0	0.00	0	70.2	70.2	70.2
9-10 AM	1947	0.0	3000	1947	0	0.35	0	69.6	61.3	49.7
10-11 AM	2528	0.0	3000	2528	0	0.45	0	68.9	58.7	45.6
11AM-NOON	2717	0.0	3000	2717	0	0.58	0	68.7	56.3	41.7
NOON-1PM	2946	0.0	2999	2946	0	0.73	0	68.4	53.6	37.7
1-2 PM	3021	0.0	2999	3021	0	0.91	8	68.3	50.7	36.9
2-3 PM	3020	0.0	2999	3020	0	1.30	29	68.3	45.7	36.9
3-4 PM	3085	0.0	3000	3085	0	2.21	81	68.2	37.1	36.9
4-5 PM	3113	0.0	3000	3113	0	4.23	193	68.2	26.2	36.9
5-6 PM	2770	0.0	2999	2770	0	3.00	137	68.6	32.0	38.0
6-7 PM	2715	0.0	3000	2715	0	0.58	0	68.7	56.2	41.7
7-8 PM	2410	0.0	OFF	2410	0	0.00	0	69.1	69.1	69.1
8-9 PM	2076	0.0	OFF	2076	0	0.00	0	69.4	69.4	69.4
9-10 PM	1875	0.0	OFF	1875	0	0.00	0	69.7	69.7	69.7
10-11 PM	1410	0.0	OFF	1410	0	0.00	0	70.2	70.2	70.2
11PM-MID	928	0.0	OFF	928	0	0.00	0	70.2	70.2	70.2

**"OFF" INDICATES NO ROAD WORK (ALL LANES OPEN TO TRAFFIC)**

*----- SITE BREAKDOWN DELAYS -----*	
BREAKDOWN DURATION (MINS)	0
RANGE OF QUEUE DELAY - MIN (VEH-H) MAX	0.0
AV BREAKDOWNS PER DAY	0.00
AV QUEUE DELAY/DAY (VEH-H)	0.0
AV TOTAL DELAY/DAY (VEH-H)	0.0

*----- SITE ACCIDENT DELAYS -----*	
BREAKDOWN DURATION (MINS)	0
RANGE OF QUEUE DELAY - MIN (VEH-H) MAX	0
AV BREAKDOWNS PER DAY	0
AV QUEUE DELAY/DAY (VEH-H)	0
AV TOTAL DELAY/DAY (VEH-H)	0

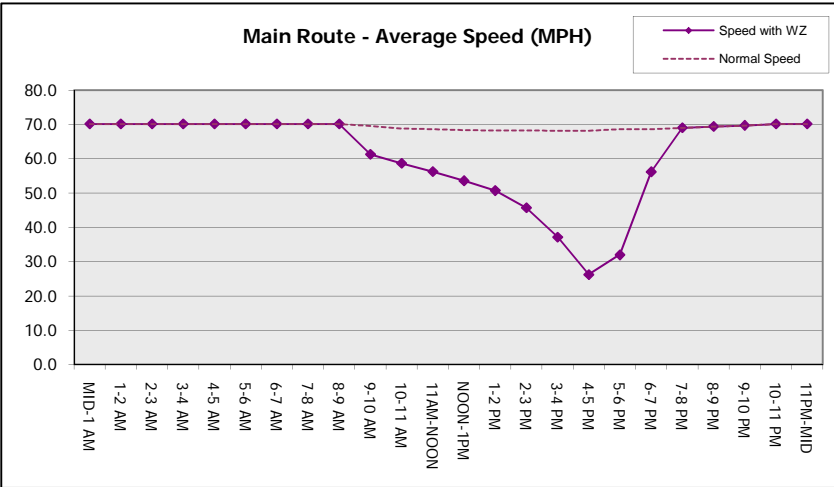
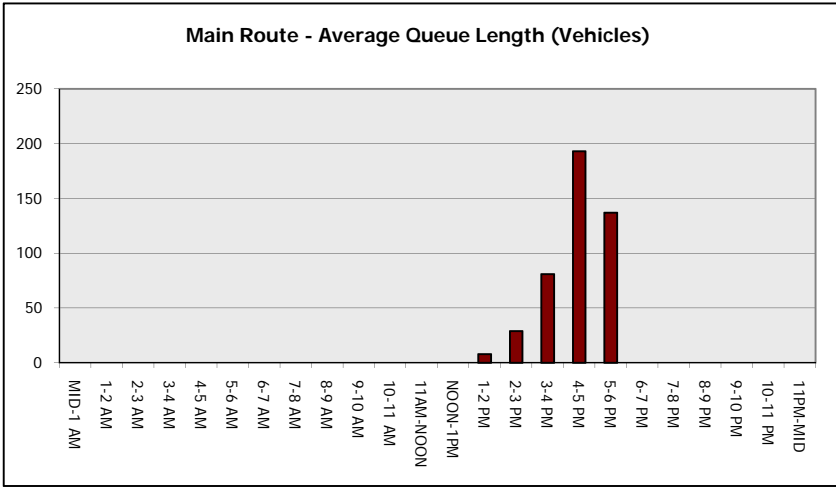
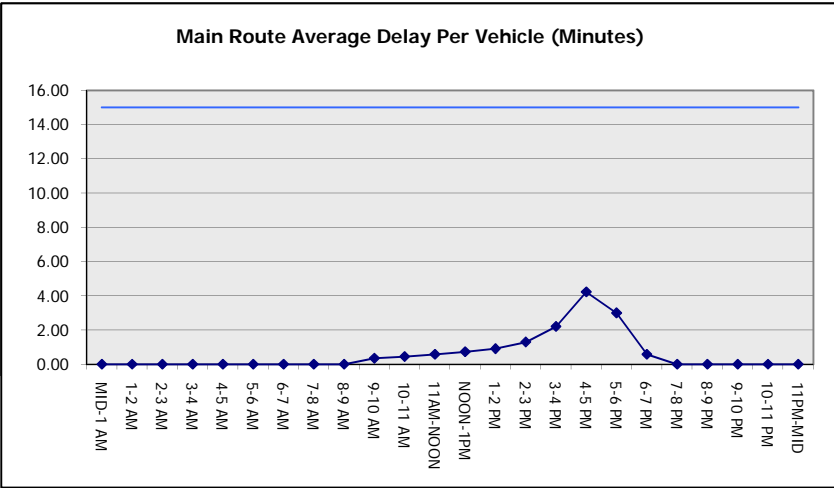
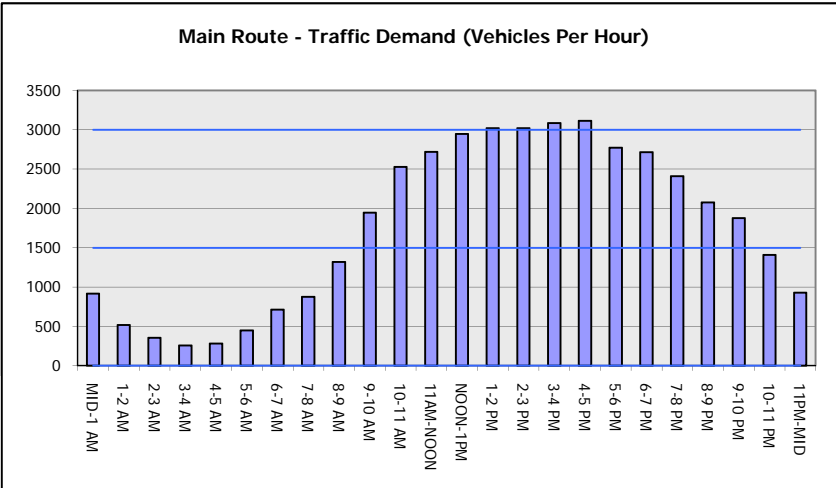
AVERAGE ACCIDENT NUMBERS (PIA/DAY)	
MAIN ROUTE WITHOUT WORKS	0.0202
MAIN ROUTE WITH WORKS	0.0183
'DIVERSION'	0.0000
PIA: Personal Injury Accidents	
IMPACTS ON ROAD USERS	
ROAD USER COSTS PER DAY	\$11,504
CONGESTED HOURS PER DAY*	0

\*Delays Exceeding User-Specified Maximum

**IH 94: CTH BB/RAWSON AVE TO STH 100/RYAN RD (MILWAUKEE COUNTY)**  
**OFF-PEAK DAY CLOSURE**  
**NO DIVERSION ROUTE (MAX QUEUE METHOD)**

**AUGUST**  
 Analyzed for 2009  
 Construction Season

**GRAPHICAL REPRESENTATION OF TRAFFIC MODEL INPUT AND OUTPUT**  
**SUNDAY WESTBOUND DIRECTION**



<b>IH 94: CTH BB/RAWSON AVE TO STH 100/Ryan RD (MILWAUKEE COUNTY)</b> <b>OFF-PEAK DAY CLOSURE</b> <b>NO DIVERSION ROUTE (MAX QUEUE METHOD)</b>	<b>AUGUST</b>
	Analyzed for 2009 Construction Season

**SUMMARY OF TRAFFIC MODEL OUTPUT**

SUNDAY EASTBOUND DIRECTION

TIME OF DAY	FLOWS AND CAPACITY IN VEH/HR							AVERAGE SPEEDS IN MPH			
	MAIN ROUTE		SITE CAPA CITY	FLOW		AV.DEL PER VEH (MINS)	AVERAGE QUEUE (VEH)	MAIN ROUTE		SITE	
	DEMAND FLOW	PCT HEAVY		MAIN ROUTE	'DIVER TED'			WITHOUT WORK ZONE	WITH WORK ZONE		
MID-1 AM	1148	0.0	OFF	1148	0	0.00	0	70.2	70.2	70.2	
1-2 AM	748	0.0	OFF	748	0	0.00	0	70.2	70.2	70.2	
2-3 AM	590	0.0	OFF	590	0	0.00	0	70.2	70.2	70.2	
3-4 AM	403	0.0	OFF	403	0	0.00	0	70.2	70.2	70.2	
4-5 AM	455	0.0	OFF	455	0	0.00	0	70.2	70.2	70.2	
5-6 AM	703	0.0	OFF	703	0	0.00	0	70.2	70.2	70.2	
6-7 AM	854	0.0	OFF	854	0	0.00	0	70.2	70.2	70.2	
7-8 AM	1048	0.0	OFF	1048	0	0.00	0	70.2	70.2	70.2	
8-9 AM	1497	0.0	OFF	1497	0	0.00	0	70.2	70.2	70.2	
9-10 AM	2247	0.0	3000	2247	0	0.35	0	69.2	61.1	49.7	
10-11 AM	2719	0.0	2999	2719	0	0.58	0	68.7	56.3	41.7	
11AM-NOON	3179	0.0	2999	3179	0	1.70	60	68.1	41.4	36.9	
NOON-1PM	3651	0.0	3000	3651	0	8.82	485	67.2	16.3	36.9	
1-2 PM	3788	0.0	2999	3006	782	16.13+	850	66.3	11.6	36.9	
2-3 PM	3936	0.0	3000	3005	931	16.09+	851	65.3	11.6	36.9	
3-4 PM	3891	0.0	3000	3003	888	16.10+	851	65.6	11.6	36.9	
4-5 PM	3773	0.0	3000	3002	771	16.13+	850	66.4	11.6	36.9	
5-6 PM	3473	0.0	3000	3001	473	16.17+	848	67.8	11.6	36.9	
6-7 PM	3189	0.0	3000	3000	189	16.16+	847	68.1	11.6	36.9	
7-8 PM	2561	0.0	OFF	2561	0	1.08	104	68.9	48.7	48.7	
8-9 PM	2230	0.0	OFF	2230	0	0.00	0	69.2	69.2	69.2	
9-10 PM	1900	0.0	OFF	1900	0	0.00	0	69.7	69.7	69.7	
10-11 PM	1336	0.0	OFF	1336	0	0.00	0	70.2	70.2	70.2	
11PM-MID	919	0.0	OFF	919	0	0.00	0	70.2	70.2	70.2	

"OFF" INDICATES NO ROAD WORK (ALL LANES OPEN TO TRAFFIC)

+ INDICATES QUEUEING EXCEEDS USER-SPECIFIED MAXIMUM LIMIT

*----- SITE BREAKDOWN DELAYS -----*	
BREAKDOWN DURATION (MINS)	0
RANGE OF QUEUE DELAY - MIN	0.0
(VEH-H) MAX	0.0
AV BREAKDOWNS PER DAY	0.00
AV QUEUE DELAY/DAY (VEH-H)	0.0
AV TOTAL DELAY/DAY (VEH-H)	0.0

*----- SITE ACCIDENT DELAYS -----*	
BREAKDOWN DURATION (MINS)	0
RANGE OF QUEUE DELAY - MIN	0
(VEH-H) MAX	0
AV BREAKDOWNS PER DAY	0
AV QUEUE DELAY/DAY (VEH-H)	0
AV TOTAL DELAY/DAY (VEH-H)	0

AVERAGE ACCIDENT NUMBERS (PIA/DAY)	
MAIN ROUTE WITHOUT WORKS	0.0240
MAIN ROUTE WITH WORKS	0.0201
'DIVERSION'	0.0045

PIA: Personal Injury Accidents

ECONOMIC IMPACT ON ROAD USERS	
ROAD USER COSTS PER DAY	\$108,873
CONGESTED HOURS PER DAY*	6

\*Delays Exceeding User-Specified Maximum

**IH 94: CTH BB/RAWSON AVE TO STH 100/RYAN RD (MILWAUKEE COUNTY)**  
**OFF-PEAK DAY CLOSURE**  
**NO DIVERSION ROUTE (MAX QUEUE METHOD)**

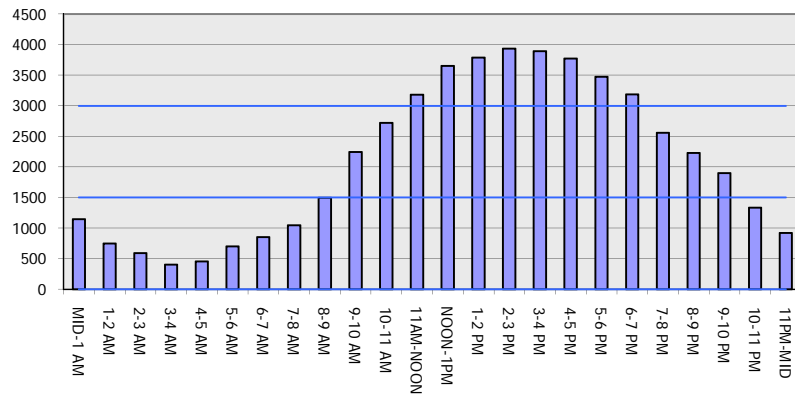
**AUGUST**

Analyzed for 2009  
 Construction Season

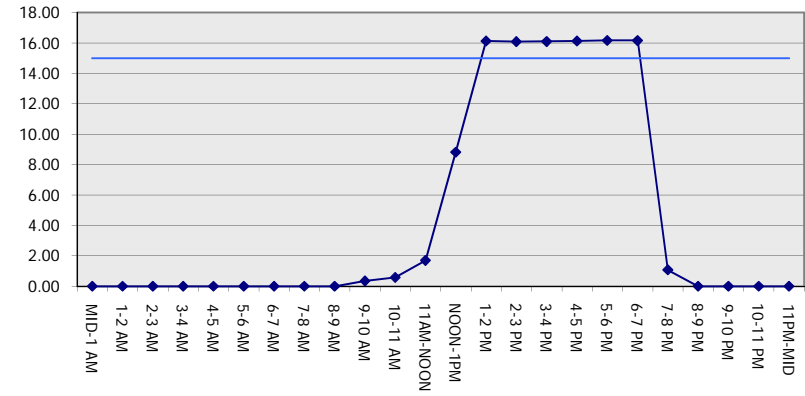
**GRAPHICAL REPRESENTATION OF TRAFFIC MODEL INPUT AND OUTPUT**

**SUNDAY EASTBOUND DIRECTION**

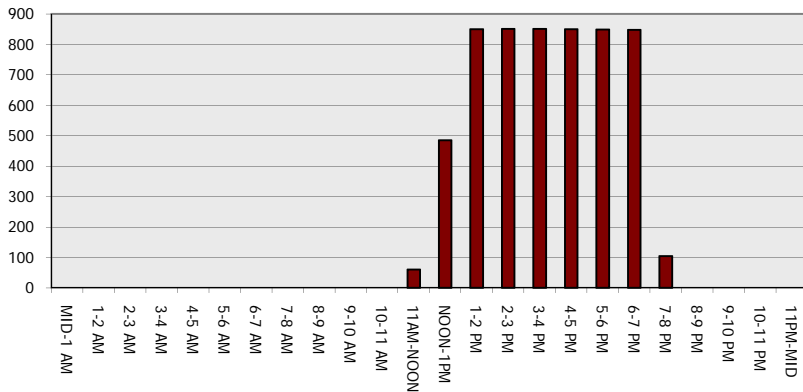
**Main Route - Traffic Demand (Vehicles Per Hour)**



**Main Route Average Delay Per Vehicle (Minutes)**



**Main Route - Average Queue Length (Vehicles)**



**Main Route - Average Speed (MPH)**

