

IH 94: CTH BB/RAWSON AVE TO STH 100/Ryan RD (MILWAUKEE COUNTY) OFF-PEAK DAY 2 LANE CLOSURE NO DIVERSION ROUTE (MAX QUEUE METHOD)	AUGUST
	Analyzed for 2009 Construction Season

SUMMARY OF TRAFFIC MODEL OUTPUT

SATURDAY WESTBOUND DIRECTION

TIME OF DAY	FLOWS AND CAPACITY IN VEH/HR						AVERAGE SPEEDS IN MPH				
	MAIN ROUTE		SITE CAPA CITY	FLOW		AV.DEL PER VEH (MINS)	AVERAGE QUEUE (VEH)	MAIN ROUTE		SITE	
	DEMAND FLOW	PCT HEAVY		MAIN ROUTE	'DIVER TED'			WITHOUT WORK ZONE	WITH WORK ZONE		
MID-1 AM	901	0.0	OFF	901	0	0.00	0	70.2	70.2	70.2	
1-2 AM	568	0.0	OFF	568	0	0.00	0	70.2	70.2	70.2	
2-3 AM	458	0.0	OFF	458	0	0.00	0	70.2	70.2	70.2	
3-4 AM	421	0.0	OFF	421	0	0.00	0	70.2	70.2	70.2	
4-5 AM	445	0.0	OFF	445	0	0.00	0	70.2	70.2	70.2	
5-6 AM	869	0.0	OFF	869	0	0.00	0	70.2	70.2	70.2	
6-7 AM	1338	0.0	OFF	1338	0	0.00	0	70.2	70.2	70.2	
7-8 AM	1700	0.0	OFF	1700	0	0.00	0	69.9	69.9	69.9	
8-9 AM	2421	0.0	1499	1890	531	11.32+	297	69.1	12.9	32.5	
9-10 AM	2833	0.0	1500	1500	1333	16.24+	400	68.5	9.6	32.5	
10-11 AM	3176	0.0	1500	1500	1676	16.23+	400	68.1	9.6	32.5	
11AM-NOON	3295	0.0	1500	1500	1795	16.22+	400	67.9	9.6	32.5	
NOON-1PM	3446	0.0	1500	1500	1946	16.21+	400	67.8	9.6	32.5	
1-2 PM	3506	0.0	1500	1500	2006	16.21+	400	67.7	9.6	32.5	
2-3 PM	3412	0.0	1500	1500	1912	16.21+	400	67.8	9.6	32.5	
3-4 PM	3342	0.0	1500	1500	1842	16.22+	400	67.9	9.6	32.5	
4-5 PM	3232	0.0	1500	1500	1732	16.22+	400	68.0	9.6	32.5	
5-6 PM	3075	0.0	1500	1500	1575	16.23+	400	68.2	9.6	32.5	
6-7 PM	2610	0.0	OFF	2610	0	0.24	22	68.8	63.0	63.0	
7-8 PM	2369	0.0	OFF	2369	0	0.00	0	69.1	69.1	69.1	
8-9 PM	2031	0.0	OFF	2031	0	0.00	0	69.5	69.5	69.5	
9-10 PM	1876	0.0	OFF	1876	0	0.00	0	69.7	69.7	69.7	
10-11 PM	1588	0.0	OFF	1588	0	0.00	0	70.0	70.0	70.0	
11PM-MID	1243	0.0	OFF	1243	0	0.00	0	70.2	70.2	70.2	

"OFF" INDICATES NO ROAD WORK (ALL LANES OPEN TO TRAFFIC)

+ INDICATES QUEUEING EXCEEDS USER-SPECIFIED MAXIMUM LIMIT

----- SITE BREAKDOWN DELAYS -----	
BREAKDOWN DURATION (MINS)	0
RANGE OF QUEUE DELAY - MIN (VEH-H) MAX	0.0
AV BREAKDOWNS PER DAY	0.00
AV QUEUE DELAY/DAY (VEH-H)	0.0
AV TOTAL DELAY/DAY (VEH-H)	0.0

----- SITE ACCIDENT DELAYS -----	
BREAKDOWN DURATION (MINS)	0
RANGE OF QUEUE DELAY - MIN (VEH-H) MAX	0
AV BREAKDOWNS PER DAY	0
AV QUEUE DELAY/DAY (VEH-H)	0
AV TOTAL DELAY/DAY (VEH-H)	0

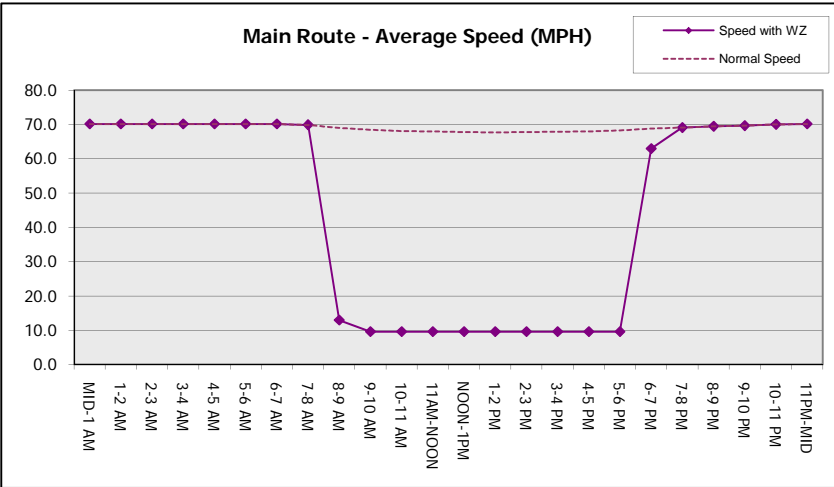
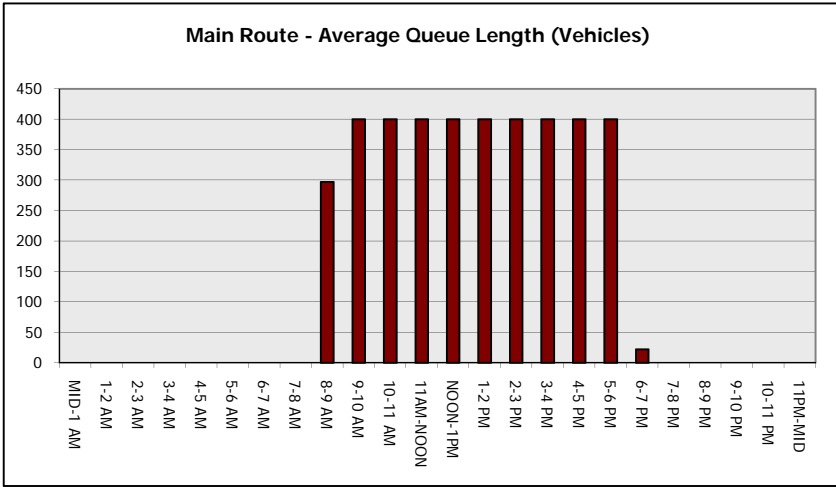
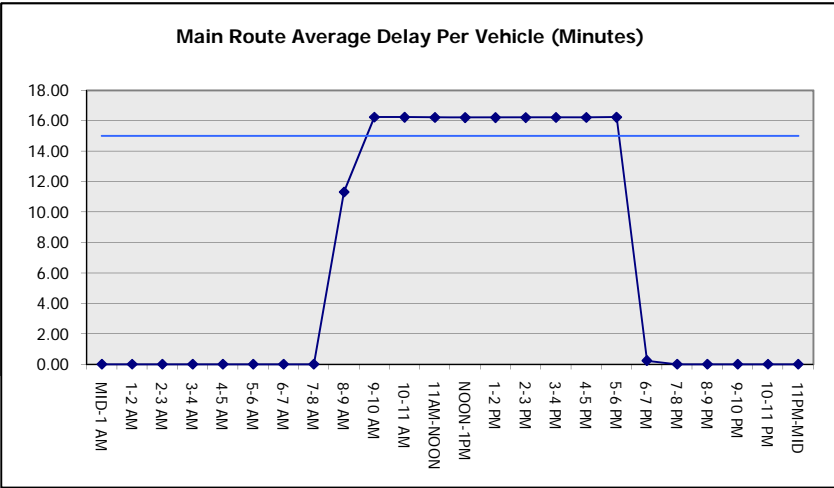
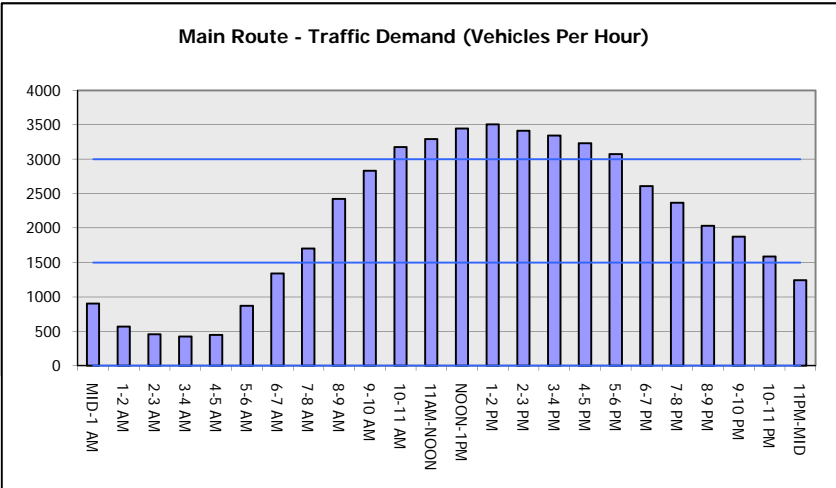
AVERAGE ACCIDENT NUMBERS (PIA/DAY)	
MAIN ROUTE WITHOUT WORKS	0.0240
MAIN ROUTE WITH WORKS	0.0151
'DIVERSION'	0.0181
PIA: Personal Injury Accidents	
IMPACTS ON ROAD USERS	
ROAD USER COSTS PER DAY	\$139,006
CONGESTED HOURS PER DAY*	10

*Delays Exceeding User-Specified Maximum

IH 94: CTH BB/RAWSON AVE TO STH 100/RYAN RD (MILWAUKEE COUNTY)
OFF-PEAK DAY 2 LANE CLOSURE
NO DIVERSION ROUTE (MAX QUEUE METHOD)

AUGUST
 Analyzed for 2009
 Construction Season

GRAPHICAL REPRESENTATION OF TRAFFIC MODEL INPUT AND OUTPUT
SATURDAY WESTBOUND DIRECTION



IH 94: CTH BB/RAWSON AVE TO STH 100/Ryan RD (MILWAUKEE COUNTY) OFF-PEAK DAY 2 LANE CLOSURE NO DIVERSION ROUTE (MAX QUEUE METHOD)	AUGUST
	Analyzed for 2009 Construction Season

SUMMARY OF TRAFFIC MODEL OUTPUT

SATURDAY EASTBOUND DIRECTION

TIME OF DAY	FLOWS AND CAPACITY IN VEH/HR						AVERAGE SPEEDS IN MPH			
	MAIN ROUTE		SITE CAPA CITY	FLOW		AV.DEL PER VEH (MINS)	AVERAGE QUEUE (VEH)	MAIN ROUTE		SITE
	DEMAND FLOW	PCT HEAVY		MAIN ROUTE	'DIVER TED'			WITHOUT WORK ZONE	WITH WORK ZONE	
MID-1 AM	975	0.0	OFF	975	0	0.00	0	70.2	70.2	70.2
1-2 AM	603	0.0	OFF	603	0	0.00	0	70.2	70.2	70.2
2-3 AM	582	0.0	OFF	582	0	0.00	0	70.2	70.2	70.2
3-4 AM	497	0.0	OFF	497	0	0.00	0	70.2	70.2	70.2
4-5 AM	684	0.0	OFF	684	0	0.00	0	70.2	70.2	70.2
5-6 AM	1146	0.0	OFF	1146	0	0.00	0	70.2	70.2	70.2
6-7 AM	1228	0.0	OFF	1228	0	0.00	0	70.2	70.2	70.2
7-8 AM	1459	0.0	OFF	1459	0	0.00	0	70.2	70.2	70.2
8-9 AM	2022	0.0	1499	2022	0	7.53+	226	69.6	17.8	32.5
9-10 AM	2558	0.0	1500	1400	1158	15.86+	392	68.9	9.7	34.1
10-11 AM	2908	0.0	1500	1500	1408	16.24+	400	68.4	9.6	32.5
11AM-NOON	3229	0.0	1500	1500	1729	16.22+	400	68.0	9.6	32.5
NOON-1PM	3384	0.0	1500	1500	1884	16.22+	400	67.8	9.6	32.5
1-2 PM	3247	0.0	1500	1500	1747	16.22+	400	68.0	9.6	32.5
2-3 PM	3439	0.0	1500	1500	1939	16.21+	400	67.8	9.6	32.5
3-4 PM	3328	0.0	1500	1500	1828	16.22+	400	67.9	9.6	32.5
4-5 PM	3158	0.0	1500	1500	1658	16.23+	400	68.1	9.6	32.5
5-6 PM	2888	0.0	1500	1500	1388	16.24+	400	68.4	9.6	32.5
6-7 PM	2506	0.0	OFF	2506	0	0.28	25	68.9	62.3	62.3
7-8 PM	2224	0.0	OFF	2224	0	0.00	0	69.3	69.3	69.3
8-9 PM	2127	0.0	OFF	2127	0	0.00	0	69.4	69.4	69.4
9-10 PM	2223	0.0	OFF	2223	0	0.00	0	69.3	69.3	69.3
10-11 PM	1763	0.0	OFF	1763	0	0.00	0	69.9	69.9	69.9
11PM-MID	1327	0.0	OFF	1327	0	0.00	0	70.2	70.2	70.2

"OFF" INDICATES NO ROAD WORK (ALL LANES OPEN TO TRAFFIC)

+ INDICATES QUEUEING EXCEEDS USER-SPECIFIED MAXIMUM LIMIT

BREAKDOWN DURATION (MINS)	0
RANGE OF QUEUE DELAY - MIN (VEH-H) MAX	0.0
AV BREAKDOWNS PER DAY	0.00
AV QUEUE DELAY/DAY (VEH-H)	0.0
AV TOTAL DELAY/DAY (VEH-H)	0.0

BREAKDOWN DURATION (MINS)	0
RANGE OF QUEUE DELAY - MIN (VEH-H) MAX	0
AV BREAKDOWNS PER DAY	0
AV QUEUE DELAY/DAY (VEH-H)	0
AV TOTAL DELAY/DAY (VEH-H)	0

MAIN ROUTE WITHOUT WORKS	0.0236
MAIN ROUTE WITH WORKS	0.0156
'DIVERSION'	0.0163

PIA: Personal Injury Accidents

ROAD USER COSTS PER DAY	\$130,163
CONGESTED HOURS PER DAY*	10

*Delays Exceeding User-Specified Maximum

IH 94: CTH BB/RAWSON AVE TO STH 100/RYAN RD (MILWAUKEE COUNTY)
OFF-PEAK DAY 2 LANE CLOSURE
NO DIVERSION ROUTE (MAX QUEUE METHOD)

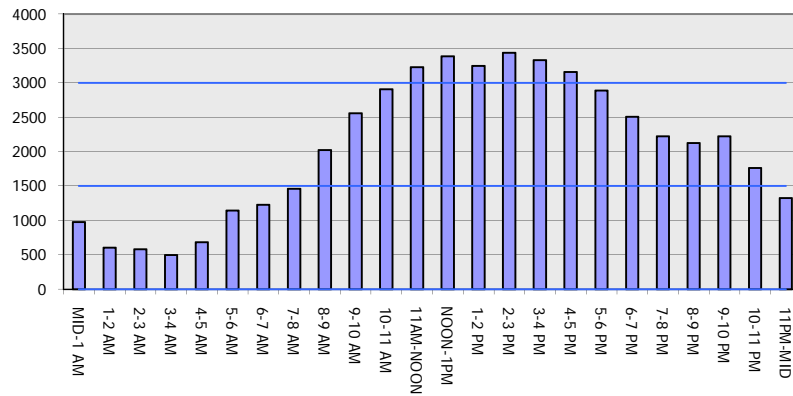
AUGUST

Analyzed for 2009
 Construction Season

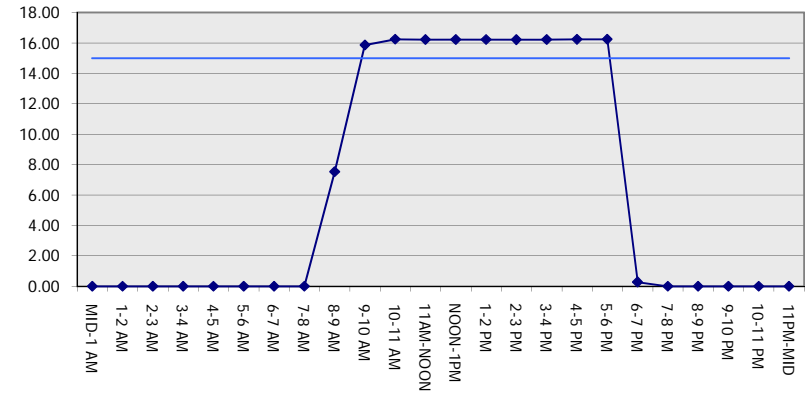
GRAPHICAL REPRESENTATION OF TRAFFIC MODEL INPUT AND OUTPUT

SATURDAY EASTBOUND DIRECTION

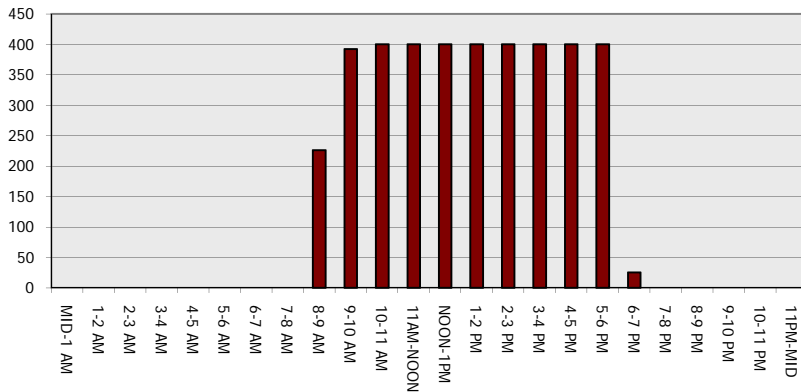
Main Route - Traffic Demand (Vehicles Per Hour)



Main Route Average Delay Per Vehicle (Minutes)



Main Route - Average Queue Length (Vehicles)



Main Route - Average Speed (MPH)

