

IH 94: CTH BB/RAWSON AVE TO STH 100/Ryan RD (MILWAUKEE COUNTY) OFF-PEAK DAY 2 LANE CLOSURE NO DIVERSION ROUTE (MAX QUEUE METHOD)	AUGUST
	Analyzed for 2009 Construction Season

SUMMARY OF TRAFFIC MODEL OUTPUT

MON-THUR WESTBOUND DIRECTION

TIME OF DAY	FLOWS AND CAPACITY IN VEH/HR						AVERAGE SPEEDS IN MPH			
	MAIN ROUTE		SITE CAPA CITY	FLOW		AV.DEL PER VEH (MINS)	AVERAGE QUEUE (VEH)	MAIN ROUTE		SITE
	DEMAND FLOW	PCT HEAVY		MAIN ROUTE	'DIVER TED'			WITHOUT WORK ZONE	WITH WORK ZONE	
MID-1 AM	716	0.0	OFF	716	0	0.00	0	70.2	70.2	70.2
1-2 AM	427	0.0	OFF	427	0	0.00	0	70.2	70.2	70.2
2-3 AM	375	0.0	OFF	375	0	0.00	0	70.2	70.2	70.2
3-4 AM	425	0.0	OFF	425	0	0.00	0	70.2	70.2	70.2
4-5 AM	672	0.0	OFF	672	0	0.00	0	70.2	70.2	70.2
5-6 AM	1826	0.0	OFF	1826	0	0.00	0	69.7	69.7	69.7
6-7 AM	3577	0.0	OFF	3577	0	0.00	0	67.6	67.6	67.6
7-8 AM	4078	0.0	OFF	4078	0	0.00	0	64.3	64.3	64.3
8-9 AM	3402	0.0	OFF	3402	0	0.00	0	67.8	67.8	67.8
9-10 AM	2907	0.0	OFF	2907	0	0.00	0	68.4	68.4	68.4
10-11 AM	2974	0.0	1499	1593	1381	14.86+	377	68.4	10.3	38.7
11AM-NOON	3045	0.0	1499	1739	1307	14.27+	371	68.2	10.6	37.4
NOON-1PM	2969	0.0	1499	1500	1469	16.22+	399	68.4	9.6	32.7
1-2 PM	2918	0.0	1500	1500	1418	16.22+	400	68.4	9.6	32.7
2-3 PM	3406	0.0	1500	1500	1906	16.20+	400	67.8	9.6	32.7
3-4 PM	3658	0.0	OFF	3658	0	0.33	23	67.2	59.9	59.9
4-5 PM	3545	0.0	OFF	3545	0	0.00	0	67.6	67.6	67.6
5-6 PM	3323	0.0	OFF	3323	0	0.00	0	67.9	67.9	67.9
6-7 PM	2744	0.0	OFF	2744	0	0.00	0	68.6	68.6	68.6
7-8 PM	2182	0.0	OFF	2182	0	0.00	0	69.3	69.3	69.3
8-9 PM	1822	0.0	OFF	1822	0	0.00	0	69.8	69.8	69.8
9-10 PM	1785	0.0	OFF	1785	0	0.00	0	69.8	69.8	69.8
10-11 PM	1485	0.0	OFF	1485	0	0.00	0	70.2	70.2	70.2
11PM-MID	1133	0.0	OFF	1133	0	0.00	0	70.2	70.2	70.2

"OFF" INDICATES NO ROAD WORK (ALL LANES OPEN TO TRAFFIC)

+ INDICATES QUEUEING EXCEEDS USER-SPECIFIED MAXIMUM LIMIT

----- SITE BREAKDOWN DELAYS -----	
BREAKDOWN DURATION (MINS)	0
RANGE OF QUEUE DELAY - MIN (VEH-H) MAX	0.0
AV BREAKDOWNS PER DAY	0.00
AV QUEUE DELAY/DAY (VEH-H)	0.0
AV TOTAL DELAY/DAY (VEH-H)	0.0

----- SITE ACCIDENT DELAYS -----	
BREAKDOWN DURATION (MINS)	0
RANGE OF QUEUE DELAY - MIN (VEH-H) MAX	0
AV BREAKDOWNS PER DAY	0
AV QUEUE DELAY/DAY (VEH-H)	0
AV TOTAL DELAY/DAY (VEH-H)	0

AVERAGE ACCIDENT NUMBERS (PIA/DAY)	
MAIN ROUTE WITHOUT WORKS	0.0265
MAIN ROUTE WITH WORKS	0.0224
'DIVERSION'	0.0083
PIA: Personal Injury Accidents	
IMPACTS ON ROAD USERS	
ROAD USER COSTS PER DAY	\$52,330
CONGESTED HOURS PER DAY*	5

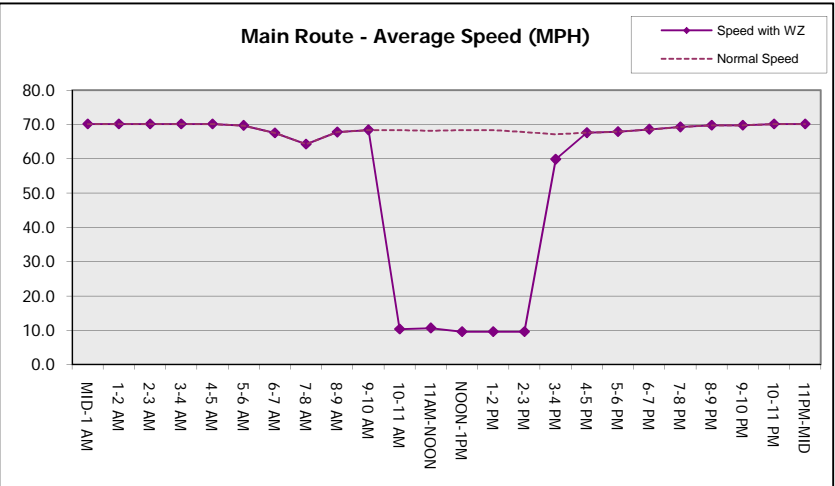
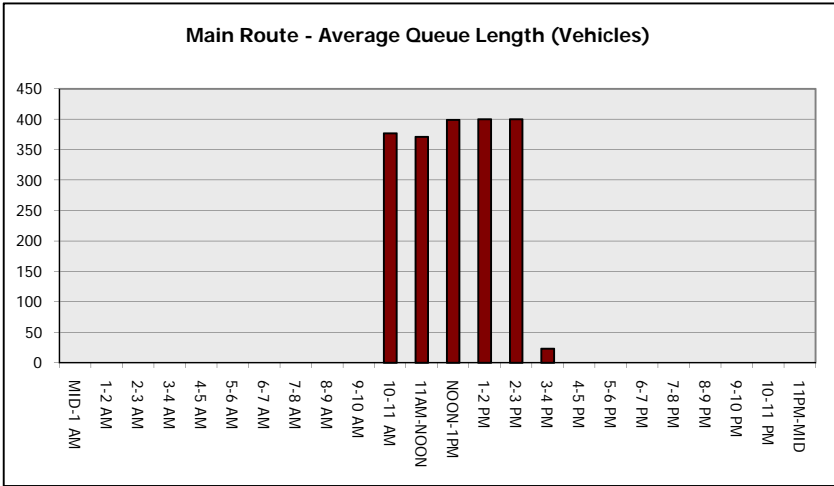
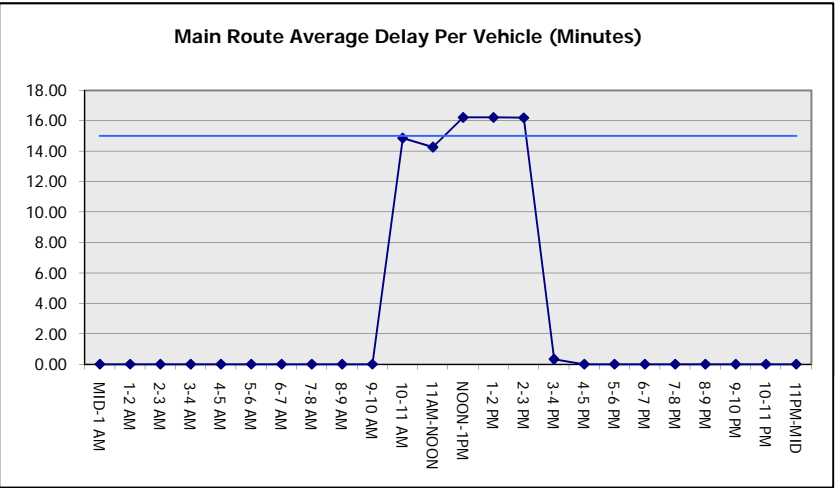
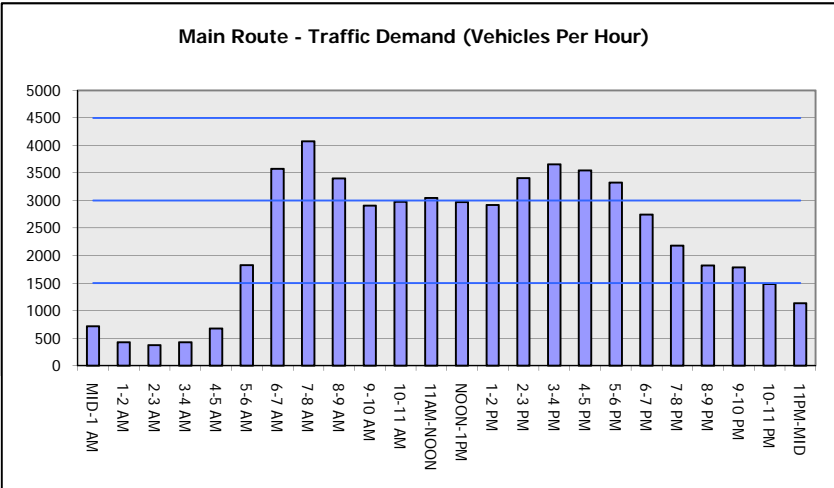
*Delays Exceeding User-Specified Maximum

IH 94: CTH BB/RAWSON AVE TO STH 100/RYAN RD (MILWAUKEE COUNTY)
OFF-PEAK DAY 2 LANE CLOSURE
NO DIVERSION ROUTE (MAX QUEUE METHOD)

AUGUST
 Analyzed for 2009
 Construction Season

GRAPHICAL REPRESENTATION OF TRAFFIC MODEL INPUT AND OUTPUT

MON-THUR WESTBOUND DIRECTION



IH 94: CTH BB/RAWSON AVE TO STH 100/Ryan RD (MILWAUKEE COUNTY) OFF-PEAK DAY 2 LANE CLOSURE NO DIVERSION ROUTE (MAX QUEUE METHOD)	AUGUST
	Analyzed for 2009 Construction Season

SUMMARY OF TRAFFIC MODEL OUTPUT

MON-THUR EASTBOUND DIRECTION

TIME OF DAY	FLOWS AND CAPACITY IN VEH/HR						AVERAGE SPEEDS IN MPH			
	MAIN ROUTE		SITE CAPA CITY	FLOW		AV.DEL PER VEH (MINS)	AVERAGE QUEUE (VEH)	MAIN ROUTE		SITE
	DEMAND FLOW	PCT HEAVY		MAIN ROUTE	'DIVER TED'			WITHOUT WORK ZONE	WITH WORK ZONE	
MID-1 AM	638	0.0	OFF	638	0	0.00	0	70.2	70.2	70.2
1-2 AM	420	0.0	OFF	420	0	0.00	0	70.2	70.2	70.2
2-3 AM	391	0.0	OFF	391	0	0.00	0	70.2	70.2	70.2
3-4 AM	471	0.0	OFF	471	0	0.00	0	70.2	70.2	70.2
4-5 AM	994	0.0	OFF	994	0	0.00	0	70.2	70.2	70.2
5-6 AM	2160	0.0	OFF	2160	0	0.00	0	69.4	69.4	69.4
6-7 AM	3087	0.0	OFF	3087	0	0.00	0	68.2	68.2	68.2
7-8 AM	3172	0.0	OFF	3172	0	0.00	0	68.1	68.1	68.1
8-9 AM	2918	0.0	OFF	2918	0	0.00	0	68.4	68.4	68.4
9-10 AM	2829	0.0	OFF	2829	0	0.00	0	68.5	68.5	68.5
10-11 AM	2662	0.0	1499	1849	813	13.29+	332	68.7	11.3	36.6
11AM-NOON	2822	0.0	1499	1500	1322	16.24+	399	68.6	9.6	32.5
NOON-1PM	3029	0.0	1500	1500	1529	16.23+	400	68.2	9.6	32.5
1-2 PM	3049	0.0	1499	1500	1549	16.23+	400	68.2	9.6	32.5
2-3 PM	3687	0.0	1500	1500	2187	16.18+	400	66.9	9.6	32.5
3-4 PM	4024	0.0	OFF	4024	0	0.41	30	64.6	56.3	56.3
4-5 PM	4387	0.0	OFF	4387	0	0.00	0	62.2	62.2	62.2
5-6 PM	4356	0.0	OFF	4356	0	0.00	0	62.4	62.4	62.4
6-7 PM	3335	0.0	OFF	3335	0	0.00	0	67.9	67.9	67.9
7-8 PM	2413	0.0	OFF	2413	0	0.00	0	69.1	69.1	69.1
8-9 PM	2071	0.0	OFF	2071	0	0.00	0	69.5	69.5	69.5
9-10 PM	1929	0.0	OFF	1929	0	0.00	0	69.6	69.6	69.6
10-11 PM	1583	0.0	OFF	1583	0	0.00	0	70.0	70.0	70.0
11PM-MID	1110	0.0	OFF	1110	0	0.00	0	70.2	70.2	70.2

"OFF" INDICATES NO ROAD WORK (ALL LANES OPEN TO TRAFFIC)

+ INDICATES QUEUEING EXCEEDS USER-SPECIFIED MAXIMUM LIMIT

----- SITE BREAKDOWN DELAYS -----	
BREAKDOWN DURATION (MINS)	0
RANGE OF QUEUE DELAY - MIN	0.0
(VEH-H) MAX	0.0
AV BREAKDOWNS PER DAY	0.00
AV QUEUE DELAY/DAY (VEH-H)	0.0
AV TOTAL DELAY/DAY (VEH-H)	0.0

----- SITE ACCIDENT DELAYS -----	
BREAKDOWN DURATION (MINS)	0
RANGE OF QUEUE DELAY - MIN	0
(VEH-H) MAX	0
AV BREAKDOWNS PER DAY	0
AV QUEUE DELAY/DAY (VEH-H)	0
AV TOTAL DELAY/DAY (VEH-H)	0

AVERAGE ACCIDENT NUMBERS (PIA/DAY)	
MAIN ROUTE WITHOUT WORKS	0.0275
MAIN ROUTE WITH WORKS	0.0234
'DIVERSION'	0.0082

PIA: Personal Injury Accidents

ECONOMIC IMPACT ON ROAD USERS	
ROAD USER COSTS PER DAY	\$52,689
CONGESTED HOURS PER DAY*	5

*Delays Exceeding User-Specified Maximum

IH 94: CTH BB/RAWSON AVE TO STH 100/RYAN RD (MILWAUKEE COUNTY)
OFF-PEAK DAY 2 LANE CLOSURE
NO DIVERSION ROUTE (MAX QUEUE METHOD)

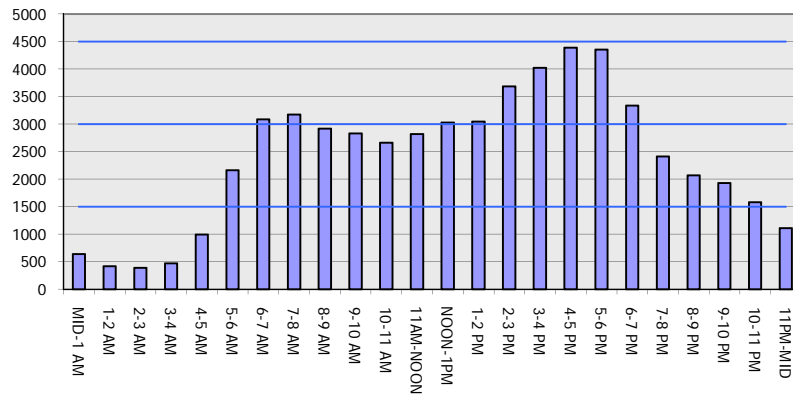
AUGUST

Analyzed for 2009
 Construction Season

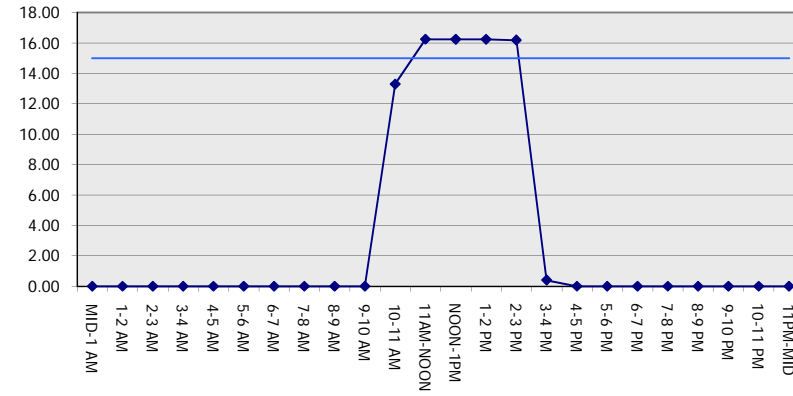
GRAPHICAL REPRESENTATION OF TRAFFIC MODEL INPUT AND OUTPUT

MON-THUR EASTBOUND DIRECTION

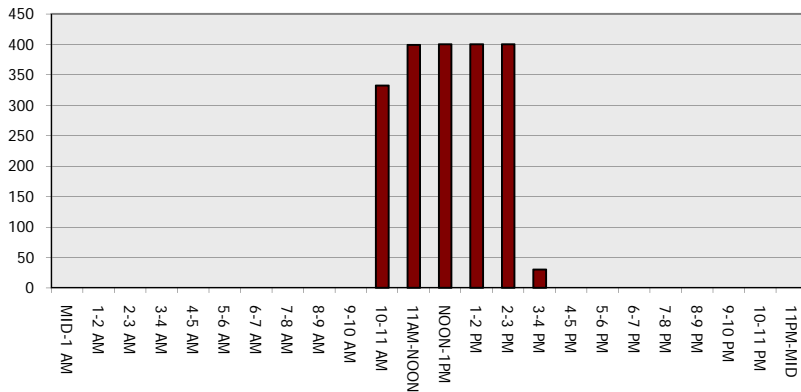
Main Route - Traffic Demand (Vehicles Per Hour)



Main Route Average Delay Per Vehicle (Minutes)



Main Route - Average Queue Length (Vehicles)



Main Route - Average Speed (MPH)

