

<b>IH 94: CTH BB/RAWSON AVE TO STH 100/Ryan RD (MILWAUKEE COUNTY)</b> <b>OFF-PEAK DAY CLOSURE</b> <b>NO DIVERSION ROUTE (MAX QUEUE METHOD)</b>	<b>AUGUST</b>
	Analyzed for 2009 Construction Season

**SUMMARY OF TRAFFIC MODEL OUTPUT**

FRIDAY WESTBOUND DIRECTION

TIME OF DAY	FLOWS AND CAPACITY IN VEH/HR						AVERAGE SPEEDS IN MPH			
	MAIN ROUTE		SITE CAPA CITY	FLOW		AV.DEL PER VEH (MINS)	AVERAGE QUEUE (VEH)	MAIN ROUTE		SITE
	DEMAND FLOW	PCT HEAVY		MAIN ROUTE	'DIVER TED'			WITHOUT WORK ZONE	WITH WORK ZONE	
MID-1 AM	846	0.0	OFF	846	0	0.00	0	70.2	70.2	70.2
1-2 AM	465	0.0	OFF	465	0	0.00	0	70.2	70.2	70.2
2-3 AM	474	0.0	OFF	474	0	0.00	0	70.2	70.2	70.2
3-4 AM	484	0.0	OFF	484	0	0.00	0	70.2	70.2	70.2
4-5 AM	713	0.0	OFF	713	0	0.00	0	70.2	70.2	70.2
5-6 AM	1903	0.0	OFF	1903	0	0.00	0	69.7	69.7	69.7
6-7 AM	3428	0.0	OFF	3428	0	0.00	0	67.8	67.8	67.8
7-8 AM	3657	0.0	OFF	3657	0	0.00	0	67.2	67.2	67.2
8-9 AM	3420	0.0	OFF	3420	0	0.00	0	67.8	67.8	67.8
9-10 AM	3188	0.0	OFF	3188	0	0.00	0	68.1	68.1	68.1
10-11 AM	3361	0.0	2999	3361	0	3.47	172	67.9	29.4	36.9
11AM-NOON	3436	0.0	3000	3436	0	10.91	573	67.8	14.0	36.9
NOON-1PM	3560	0.0	2999	3016	544	16.17+	849	67.6	11.6	36.9
1-2 PM	3753	0.0	3000	3011	742	16.14+	850	66.5	11.6	36.9
2-3 PM	3903	0.0	3000	3008	894	16.10+	851	65.5	11.6	36.9
3-4 PM	3946	0.0	OFF	3946	0	1.95	168	65.2	38.2	38.2
4-5 PM	3626	0.0	OFF	3626	0	0.00	0	67.4	67.4	67.4
5-6 PM	3786	0.0	OFF	3786	0	0.00	0	66.3	66.3	66.3
6-7 PM	3599	0.0	OFF	3599	0	0.00	0	67.6	67.6	67.6
7-8 PM	3126	0.0	OFF	3126	0	0.00	0	68.1	68.1	68.1
8-9 PM	2479	0.0	OFF	2479	0	0.00	0	68.9	68.9	68.9
9-10 PM	2195	0.0	OFF	2195	0	0.00	0	69.3	69.3	69.3
10-11 PM	1844	0.0	OFF	1844	0	0.00	0	69.7	69.7	69.7
11PM-MID	1405	0.0	OFF	1405	0	0.00	0	70.2	70.2	70.2

"OFF" INDICATES NO ROAD WORK (ALL LANES OPEN TO TRAFFIC)

+ INDICATES QUEUEING EXCEEDS USER-SPECIFIED MAXIMUM LIMIT

*----- SITE BREAKDOWN DELAYS -----*	
BREAKDOWN DURATION (MINS)	0
RANGE OF QUEUE DELAY - MIN (VEH-H) MAX	0.0
AV BREAKDOWNS PER DAY	0.00
AV QUEUE DELAY/DAY (VEH-H)	0.0
AV TOTAL DELAY/DAY (VEH-H)	0.0

*----- SITE ACCIDENT DELAYS -----*	
BREAKDOWN DURATION (MINS)	0
RANGE OF QUEUE DELAY - MIN (VEH-H) MAX	0
AV BREAKDOWNS PER DAY	0
AV QUEUE DELAY/DAY (VEH-H)	0
AV TOTAL DELAY/DAY (VEH-H)	0

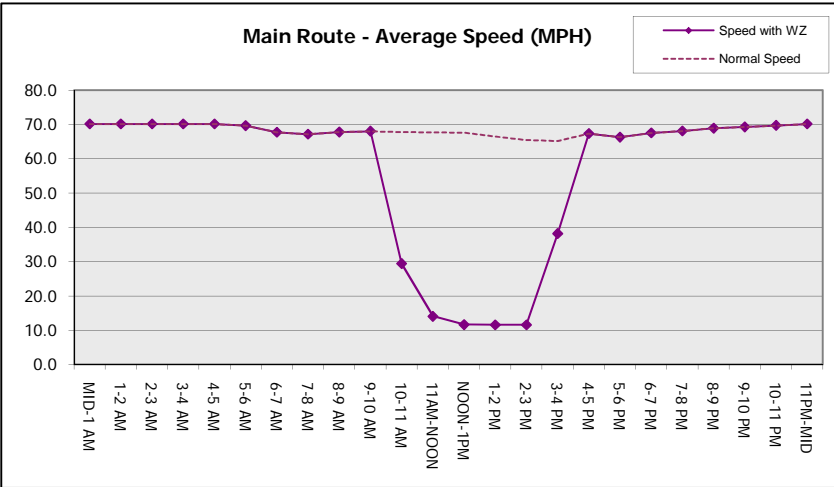
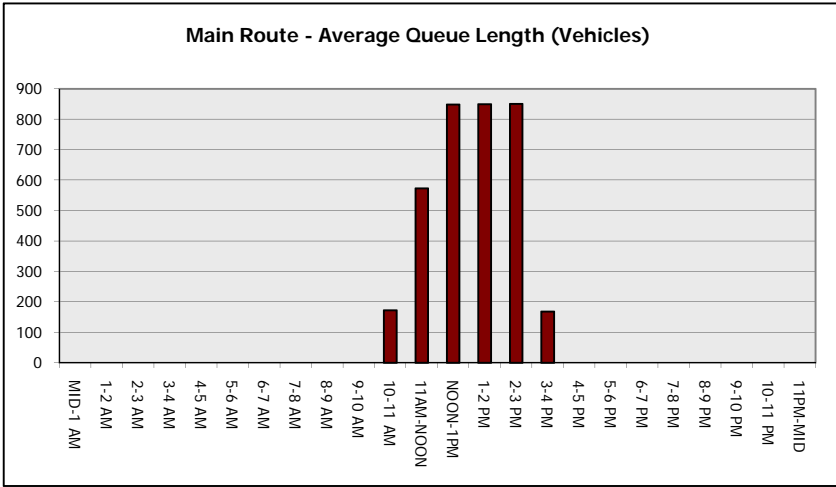
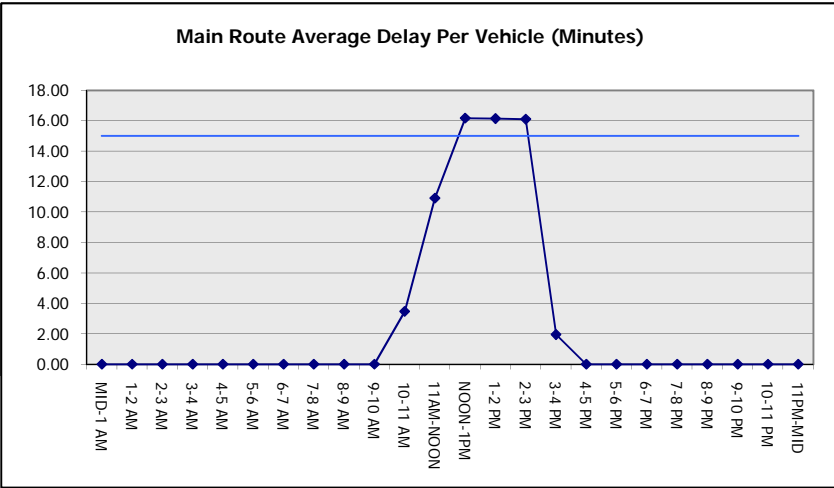
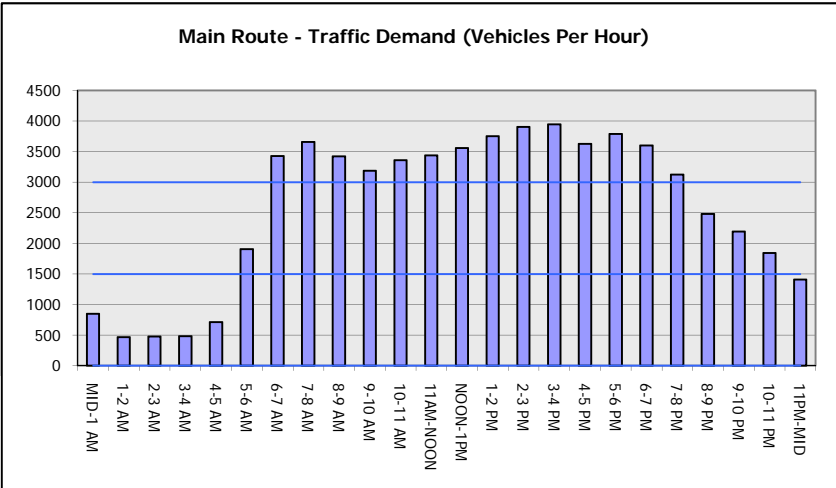
AVERAGE ACCIDENT NUMBERS (PIA/DAY)	
MAIN ROUTE WITHOUT WORKS	0.0299
MAIN ROUTE WITH WORKS	0.0278
'DIVERSION'	0.0024
PIA: Personal Injury Accidents	
IMPACTS ON ROAD USERS	
ROAD USER COSTS PER DAY	\$49,377
CONGESTED HOURS PER DAY*	3

\*Delays Exceeding User-Specified Maximum

**IH 94: CTH BB/RAWSON AVE TO STH 100/RYAN RD (MILWAUKEE COUNTY)**  
**OFF-PEAK DAY CLOSURE**  
**NO DIVERSION ROUTE (MAX QUEUE METHOD)**

**AUGUST**  
 Analyzed for 2009  
 Construction Season

**GRAPHICAL REPRESENTATION OF TRAFFIC MODEL INPUT AND OUTPUT**  
**FRIDAY WESTBOUND DIRECTION**



<b>IH 94: CTH BB/RAWSON AVE TO STH 100/Ryan RD (MILWAUKEE COUNTY)</b> <b>OFF-PEAK DAY CLOSURE</b> <b>NO DIVERSION ROUTE (MAX QUEUE METHOD)</b>	<b>AUGUST</b>
	Analyzed for 2009 Construction Season

**SUMMARY OF TRAFFIC MODEL OUTPUT**

FRIDAY EASTBOUND DIRECTION

TIME OF DAY	FLOWS AND CAPACITY IN VEH/HR						AVERAGE SPEEDS IN MPH			
	MAIN ROUTE		SITE CAPA CITY	FLOW		AV.DEL PER VEH (MINS)	AVERAGE QUEUE (VEH)	MAIN ROUTE		SITE
	DEMAND FLOW	PCT HEAVY		MAIN ROUTE	'DIVER TED'			WITHOUT WORK ZONE	WITH WORK ZONE	
MID-1 AM	691	0.0	OFF	691	0	0.00	0	70.2	70.2	70.2
1-2 AM	479	0.0	OFF	479	0	0.00	0	70.2	70.2	70.2
2-3 AM	493	0.0	OFF	493	0	0.00	0	70.2	70.2	70.2
3-4 AM	521	0.0	OFF	521	0	0.00	0	70.2	70.2	70.2
4-5 AM	995	0.0	OFF	995	0	0.00	0	70.2	70.2	70.2
5-6 AM	2110	0.0	OFF	2110	0	0.00	0	69.4	69.4	69.4
6-7 AM	2858	0.0	OFF	2858	0	0.00	0	68.5	68.5	68.5
7-8 AM	2727	0.0	OFF	2727	0	0.00	0	68.6	68.6	68.6
8-9 AM	2856	0.0	OFF	2856	0	0.00	0	68.5	68.5	68.5
9-10 AM	2924	0.0	OFF	2924	0	0.00	0	68.4	68.4	68.4
10-11 AM	2941	0.0	2999	2941	0	0.72	0	68.4	53.7	37.8
11AM-NOON	3132	0.0	2999	3132	0	1.58	49	68.1	42.7	36.9
NOON-1PM	3452	0.0	3000	3452	0	6.47	342	67.8	19.7	36.9
1-2 PM	3622	0.0	3000	3279	343	14.96+	786	67.4	12.0	36.9
2-3 PM	3926	0.0	2999	2997	930	16.09+	851	65.3	11.6	36.9
3-4 PM	4223	0.0	OFF	4223	0	2.37	207	63.3	34.5	34.5
4-5 PM	4255	0.0	OFF	4255	0	0.00	0	63.1	63.1	63.1
5-6 PM	4309	0.0	OFF	4309	0	0.00	0	62.7	62.7	62.7
6-7 PM	3357	0.0	OFF	3357	0	0.00	0	67.9	67.9	67.9
7-8 PM	2654	0.0	OFF	2654	0	0.00	0	68.7	68.7	68.7
8-9 PM	2258	0.0	OFF	2258	0	0.00	0	69.2	69.2	69.2
9-10 PM	2258	0.0	OFF	2258	0	0.00	0	69.2	69.2	69.2
10-11 PM	2246	0.0	OFF	2246	0	0.00	0	69.2	69.2	69.2
11PM-MID	1625	0.0	OFF	1625	0	0.00	0	70.0	70.0	70.0

"OFF" INDICATES NO ROAD WORK (ALL LANES OPEN TO TRAFFIC)

+ INDICATES QUEUEING EXCEEDS USER-SPECIFIED MAXIMUM LIMIT

BREAKDOWN DURATION (MINS)	0
RANGE OF QUEUE DELAY - MIN (VEH-H) MAX	0.0
AV BREAKDOWNS PER DAY	0.00
AV QUEUE DELAY/DAY (VEH-H)	0.0
AV TOTAL DELAY/DAY (VEH-H)	0.0

BREAKDOWN DURATION (MINS)	0
RANGE OF QUEUE DELAY - MIN (VEH-H) MAX	0
AV BREAKDOWNS PER DAY	0
AV QUEUE DELAY/DAY (VEH-H)	0
AV TOTAL DELAY/DAY (VEH-H)	0

MAIN ROUTE WITHOUT WORKS	0.0291
MAIN ROUTE WITH WORKS	0.0274
'DIVERSION'	0.0014

PIA: Personal Injury Accidents

ROAD USER COSTS PER DAY	\$32,548
CONGESTED HOURS PER DAY*	2

\*Delays Exceeding User-Specified Maximum

**IH 94: CTH BB/RAWSON AVE TO STH 100/RYAN RD (MILWAUKEE COUNTY)**  
**OFF-PEAK DAY CLOSURE**  
**NO DIVERSION ROUTE (MAX QUEUE METHOD)**

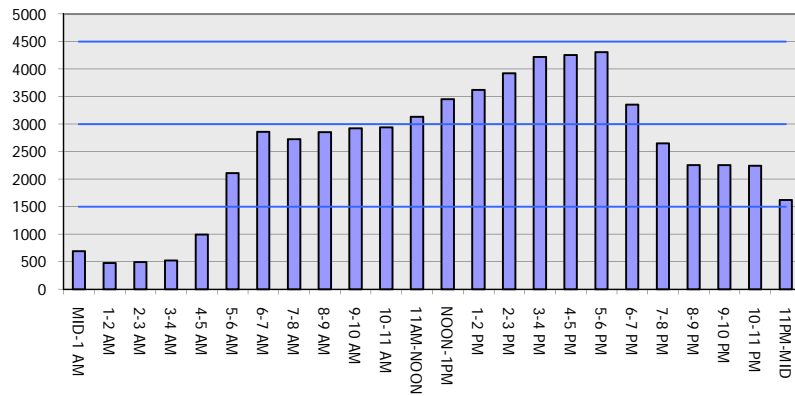
**AUGUST**

Analyzed for 2009  
 Construction Season

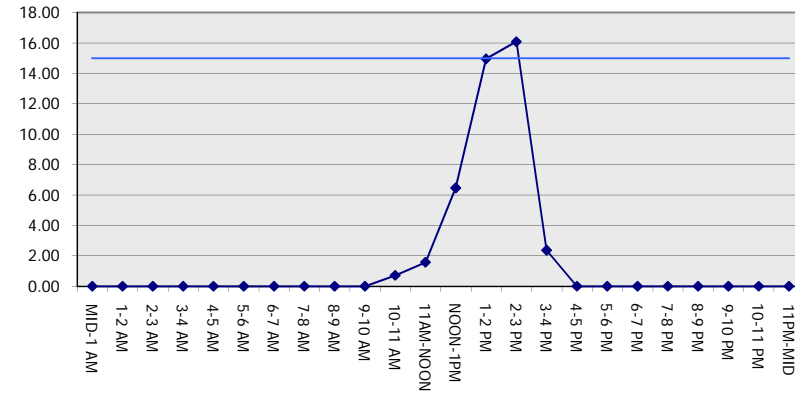
**GRAPHICAL REPRESENTATION OF TRAFFIC MODEL INPUT AND OUTPUT**

**FRIDAY EASTBOUND DIRECTION**

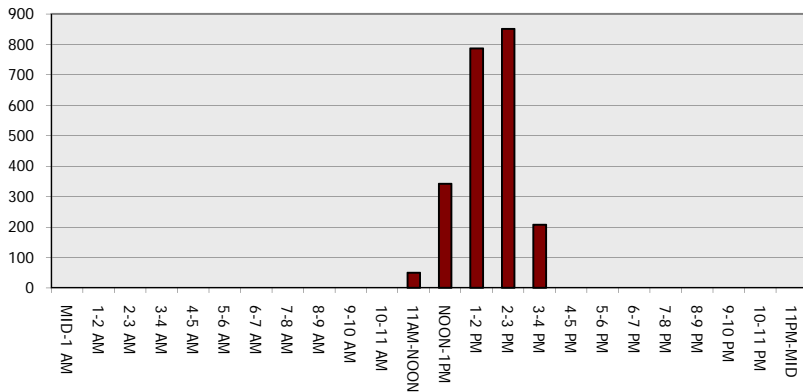
**Main Route - Traffic Demand (Vehicles Per Hour)**



**Main Route Average Delay Per Vehicle (Minutes)**



**Main Route - Average Queue Length (Vehicles)**



**Main Route - Average Speed (MPH)**

