

IH 94: CTH BB/RAWSON AVE TO STH 100/RYAN RD (MILWAUKEE COUNTY) OFF-PEAK DAY CLOSURE NO DIVERSION ROUTE (MAX QUEUE METHOD)	MAY
	Analyzed for 2009 Construction Season

SUMMARY OF TRAFFIC MODEL OUTPUT

MON-THUR WESTBOUND DIRECTION

TIME OF DAY	FLOWS AND CAPACITY IN VEH/HR						AVERAGE SPEEDS IN MPH			
	MAIN ROUTE		SITE CAPA CITY	FLOW		AV.DEL PER VEH (MINS)	AVERAGE QUEUE (VEH)	MAIN ROUTE		SITE
	DEMAND FLOW	PCT HEAVY		MAIN ROUTE	'DIVER TED'			WITHOUT WORK ZONE	WITH WORK ZONE	
MID-1 AM	605	0.0	OFF	605	0	0.00	0	70.2	70.2	70.2
1-2 AM	347	0.0	OFF	347	0	0.00	0	70.2	70.2	70.2
2-3 AM	322	0.0	OFF	322	0	0.00	0	70.2	70.2	70.2
3-4 AM	400	0.0	OFF	400	0	0.00	0	70.2	70.2	70.2
4-5 AM	614	0.0	OFF	614	0	0.00	0	70.2	70.2	70.2
5-6 AM	1805	0.0	OFF	1805	0	0.00	0	69.8	69.8	69.8
6-7 AM	3451	0.0	OFF	3451	0	0.00	0	67.8	67.8	67.8
7-8 AM	3932	0.0	OFF	3932	0	0.00	0	65.3	65.3	65.3
8-9 AM	3172	0.0	OFF	3172	0	0.00	0	68.1	68.1	68.1
9-10 AM	2443	0.0	OFF	2443	0	0.00	0	69.0	69.0	69.0
10-11 AM	2578	0.0	3000	2578	0	0.49	0	68.8	58.1	44.5
11AM-NOON	2587	0.0	3000	2587	0	0.49	0	68.8	57.9	44.3
NOON-1PM	2692	0.0	3000	2692	0	0.56	0	68.7	56.6	42.1
1-2 PM	2743	0.0	2999	2743	0	0.59	0	68.6	56.0	41.2
2-3 PM	3219	0.0	2999	3219	0	2.13	86	68.1	37.7	36.9
3-4 PM	3466	0.0	OFF	3466	0	0.12	9	67.8	64.7	64.7
4-5 PM	3287	0.0	OFF	3287	0	0.00	0	67.9	67.9	67.9
5-6 PM	3272	0.0	OFF	3272	0	0.00	0	68.0	68.0	68.0
6-7 PM	2534	0.0	OFF	2534	0	0.00	0	68.9	68.9	68.9
7-8 PM	2086	0.0	OFF	2086	0	0.00	0	69.4	69.4	69.4
8-9 PM	1760	0.0	OFF	1760	0	0.00	0	69.9	69.9	69.9
9-10 PM	1740	0.0	OFF	1740	0	0.00	0	69.9	69.9	69.9
10-11 PM	1328	0.0	OFF	1328	0	0.00	0	70.2	70.2	70.2
11PM-MID	929	0.0	OFF	929	0	0.00	0	70.2	70.2	70.2

"OFF" INDICATES NO ROAD WORK (ALL LANES OPEN TO TRAFFIC)

----- SITE BREAKDOWN DELAYS -----	
BREAKDOWN DURATION (MINS)	0
RANGE OF QUEUE DELAY - MIN (VEH-H) MAX	0.0
AV BREAKDOWNS PER DAY	0.00
AV QUEUE DELAY/DAY (VEH-H)	0.0
AV TOTAL DELAY/DAY (VEH-H)	0.0

----- SITE ACCIDENT DELAYS -----	
BREAKDOWN DURATION (MINS)	0
RANGE OF QUEUE DELAY - MIN (VEH-H) MAX	0
AV BREAKDOWNS PER DAY	0
AV QUEUE DELAY/DAY (VEH-H)	0
AV TOTAL DELAY/DAY (VEH-H)	0

AVERAGE ACCIDENT NUMBERS (PIA/DAY)	
MAIN ROUTE WITHOUT WORKS	0.0245
MAIN ROUTE WITH WORKS	0.0236
'DIVERSION'	0.0000
PIA: Personal Injury Accidents	
IMPACTS ON ROAD USERS	
ROAD USER COSTS PER DAY	\$2,202
CONGESTED HOURS PER DAY*	0

*Delays Exceeding User-Specified Maximum

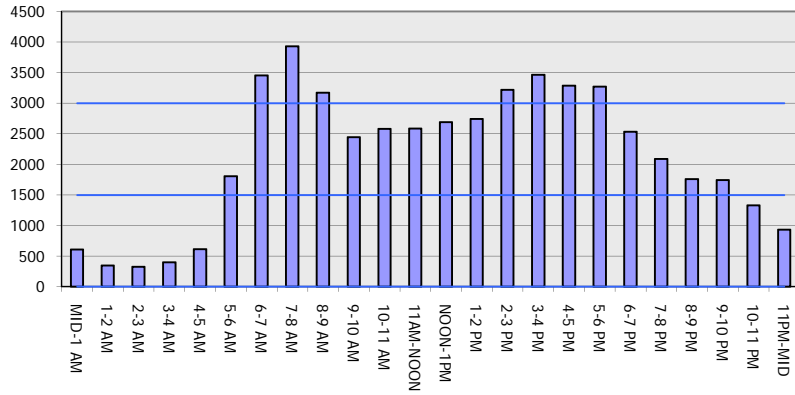
IH 94: CTH BB/RAWSON AVE TO STH 100/RYAN RD (MILWAUKEE COUNTY)
OFF-PEAK DAY CLOSURE
NO DIVERSION ROUTE (MAX QUEUE METHOD)

MAY
 Analyzed for 2009
 Construction Season

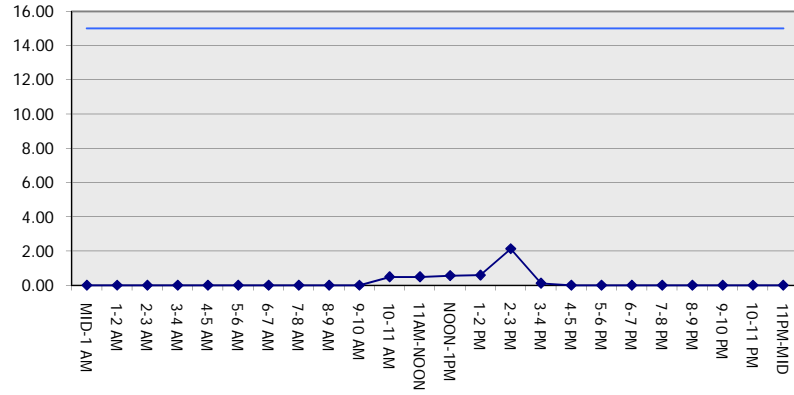
GRAPHICAL REPRESENTATION OF TRAFFIC MODEL INPUT AND OUTPUT

MON-THUR WESTBOUND DIRECTION

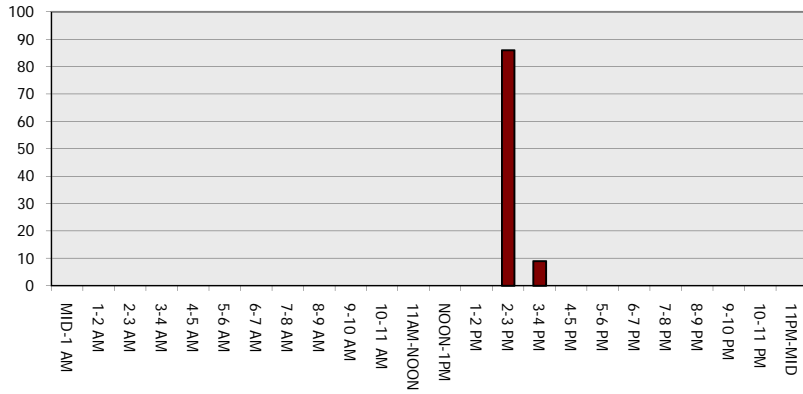
Main Route - Traffic Demand (Vehicles Per Hour)



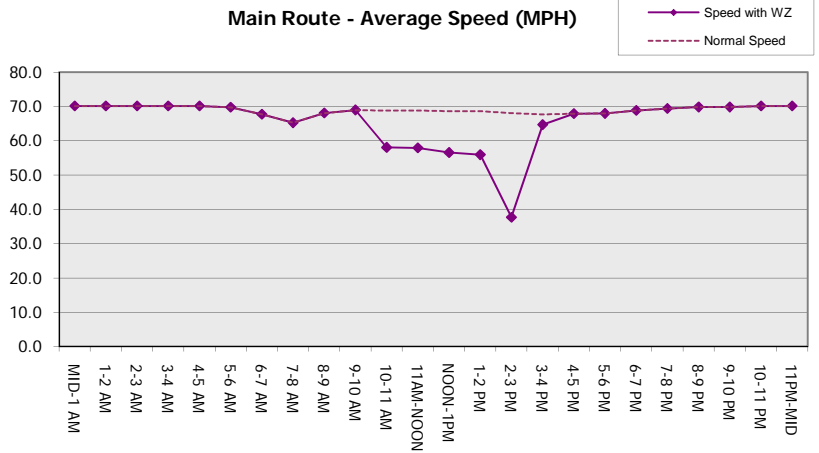
Main Route Average Delay Per Vehicle (Minutes)



Main Route - Average Queue Length (Vehicles)



Main Route - Average Speed (MPH)



IH 94: CTH BB/RAWSON AVE TO STH 100/Ryan RD (MILWAUKEE COUNTY) OFF-PEAK DAY CLOSURE NO DIVERSION ROUTE (MAX QUEUE METHOD)	MAY
	Analyzed for 2009 Construction Season

SUMMARY OF TRAFFIC MODEL OUTPUT

MON-THUR EASTBOUND DIRECTION

TIME OF DAY	FLOWS AND CAPACITY IN VEH/HR						AVERAGE SPEEDS IN MPH			
	MAIN ROUTE		SITE CAPA CITY	FLOW		AV.DEL PER VEH (MINS)	AVERAGE QUEUE (VEH)	MAIN ROUTE		SITE
	DEMAND FLOW	PCT HEAVY		MAIN ROUTE	'DIVER TED'			WITHOUT WORK ZONE	WITH WORK ZONE	
MID-1 AM	529	0.0	OFF	529	0	0.00	0	70.2	70.2	70.2
1-2 AM	366	0.0	OFF	366	0	0.00	0	70.2	70.2	70.2
2-3 AM	369	0.0	OFF	369	0	0.00	0	70.2	70.2	70.2
3-4 AM	476	0.0	OFF	476	0	0.00	0	70.2	70.2	70.2
4-5 AM	930	0.0	OFF	930	0	0.00	0	70.2	70.2	70.2
5-6 AM	2125	0.0	OFF	2125	0	0.00	0	69.4	69.4	69.4
6-7 AM	3220	0.0	OFF	3220	0	0.00	0	68.1	68.1	68.1
7-8 AM	3121	0.0	OFF	3121	0	0.00	0	68.2	68.2	68.2
8-9 AM	2814	0.0	OFF	2814	0	0.00	0	68.6	68.6	68.6
9-10 AM	2416	0.0	OFF	2416	0	0.00	0	69.1	69.1	69.1
10-11 AM	2475	0.0	3000	2475	0	0.42	0	69.0	59.4	46.8
11AM-NOON	2668	0.0	3000	2668	0	0.55	0	68.7	56.9	42.6
NOON-1PM	2907	0.0	2999	2907	0	0.70	0	68.4	54.0	38.3
1-2 PM	3049	0.0	2999	3049	0	1.03	16	68.2	49.1	37.1
2-3 PM	3599	0.0	3000	3599	0	6.16	343	67.6	20.6	36.9
3-4 PM	3804	0.0	OFF	3804	0	1.21	101	66.2	45.8	45.8
4-5 PM	4165	0.0	OFF	4165	0	0.00	0	63.7	63.7	63.7
5-6 PM	4316	0.0	OFF	4316	0	0.00	0	62.7	62.7	62.7
6-7 PM	3053	0.0	OFF	3053	0	0.00	0	68.2	68.2	68.2
7-8 PM	2259	0.0	OFF	2259	0	0.00	0	69.2	69.2	69.2
8-9 PM	1956	0.0	OFF	1956	0	0.00	0	69.6	69.6	69.6
9-10 PM	1808	0.0	OFF	1808	0	0.00	0	69.8	69.8	69.8
10-11 PM	1418	0.0	OFF	1418	0	0.00	0	70.2	70.2	70.2
11PM-MID	909	0.0	OFF	909	0	0.00	0	70.2	70.2	70.2

"OFF" INDICATES NO ROAD WORK (ALL LANES OPEN TO TRAFFIC)

----- SITE BREAKDOWN DELAYS -----	
BREAKDOWN DURATION (MINS)	0
RANGE OF QUEUE DELAY - MIN (VEH-H) MAX	0.0
AV BREAKDOWNS PER DAY	0.00
AV QUEUE DELAY/DAY (VEH-H)	0.0
AV TOTAL DELAY/DAY (VEH-H)	0.0

----- SITE ACCIDENT DELAYS -----	
BREAKDOWN DURATION (MINS)	0
RANGE OF QUEUE DELAY - MIN (VEH-H) MAX	0
AV BREAKDOWNS PER DAY	0
AV QUEUE DELAY/DAY (VEH-H)	0
AV TOTAL DELAY/DAY (VEH-H)	0

AVERAGE ACCIDENT NUMBERS (PIA/DAY)	
MAIN ROUTE WITHOUT WORKS	0.0262
MAIN ROUTE WITH WORKS	0.0252
'DIVERSION'	0.0000

PIA: Personal Injury Accidents

ECONOMIC IMPACT ON ROAD USERS	
ROAD USER COSTS PER DAY	\$5,867
CONGESTED HOURS PER DAY*	0

*Delays Exceeding User-Specified Maximum

IH 94: CTH BB/RAWSON AVE TO STH 100/RYAN RD (MILWAUKEE COUNTY)
OFF-PEAK DAY CLOSURE
NO DIVERSION ROUTE (MAX QUEUE METHOD)

MAY
 Analyzed for 2009
 Construction Season

GRAPHICAL REPRESENTATION OF TRAFFIC MODEL INPUT AND OUTPUT
MON-THUR EASTBOUND DIRECTION

