

IH 94: CTH ZZ/COLLEGE AVE TO CTH BB/RAWSON AVE (MILWAUKEE COUNTY) OFF-PEAK DAY 2 LANE CLOSURE NO DIVERSION ROUTE (MAX QUEUE METHOD)	OCTOBER
	Analyzed for 2009 Construction Season

SUMMARY OF TRAFFIC MODEL OUTPUT

SUNDAY WESTBOUND DIRECTION

TIME OF DAY	FLOWS AND CAPACITY IN VEH/HR						AVERAGE SPEEDS IN MPH			
	MAIN ROUTE		SITE CAPA CITY	FLOW		AV.DEL PER VEH (MINS)	AVERAGE QUEUE (VEH)	MAIN ROUTE		SITE
	DEMAND FLOW	PCT HEAVY		MAIN ROUTE	'DIVER TED'			WITHOUT WORK ZONE	WITH WORK ZONE	
MID-1 AM	991	0.0	OFF	991	0	0.00	0	70.2	70.2	70.2
1-2 AM	545	0.0	OFF	545	0	0.00	0	70.2	70.2	70.2
2-3 AM	456	0.0	OFF	456	0	0.00	0	70.2	70.2	70.2
3-4 AM	304	0.0	OFF	304	0	0.00	0	70.2	70.2	70.2
4-5 AM	328	0.0	OFF	328	0	0.00	0	70.2	70.2	70.2
5-6 AM	482	0.0	OFF	482	0	0.00	0	70.2	70.2	70.2
6-7 AM	859	0.0	OFF	859	0	0.00	0	70.2	70.2	70.2
7-8 AM	1097	0.0	OFF	1097	0	0.00	0	70.2	70.2	70.2
8-9 AM	1529	0.0	OFF	1529	0	0.00	0	70.1	70.1	70.1
9-10 AM	2098	0.0	1499	2003	95	8.23+	245	69.4	8.2	32.5
10-11 AM	2718	0.0	1500	1454	1264	16.84+	428	68.7	5.4	32.5
11AM-NOON	3164	0.0	1499	1485	1680	17.06+	433	68.1	5.4	32.5
NOON-1PM	3426	0.0	1499	1500	1926	17.11+	435	67.8	5.3	32.5
1-2 PM	3443	0.0	1500	1500	1943	17.11+	435	67.8	5.3	32.5
2-3 PM	3409	0.0	1500	1500	1909	17.11+	435	67.8	5.3	32.5
3-4 PM	3622	0.0	1500	1500	2122	17.11+	435	67.4	5.3	32.5
4-5 PM	3606	0.0	1500	1500	2106	17.11+	435	67.5	5.3	32.5
5-6 PM	3530	0.0	1500	1500	2030	17.11+	435	67.6	5.3	32.5
6-7 PM	3159	0.0	1499	1494	1665	17.04+	433	68.1	5.4	32.5
7-8 PM	2702	0.0	OFF	2702	0	0.29	28	68.7	51.4	51.4
8-9 PM	2099	0.0	OFF	2099	0	0.00	0	69.4	69.4	69.4
9-10 PM	1898	0.0	OFF	1898	0	0.00	0	69.7	69.7	69.7
10-11 PM	1396	0.0	OFF	1396	0	0.00	0	70.2	70.2	70.2
11PM-MID	995	0.0	OFF	995	0	0.00	0	70.2	70.2	70.2

"OFF" INDICATES NO ROAD WORK (ALL LANES OPEN TO TRAFFIC)

+ INDICATES QUEUEING EXCEEDS USER-SPECIFIED MAXIMUM LIMIT

----- SITE BREAKDOWN DELAYS -----	
BREAKDOWN DURATION (MINS)	0
RANGE OF QUEUE DELAY - MIN (VEH-H) MAX	0.0
AV BREAKDOWNS PER DAY	0.00
AV QUEUE DELAY/DAY (VEH-H)	0.0
AV TOTAL DELAY/DAY (VEH-H)	0.0

----- SITE ACCIDENT DELAYS -----	
BREAKDOWN DURATION (MINS)	0
RANGE OF QUEUE DELAY - MIN (VEH-H) MAX	0
AV BREAKDOWNS PER DAY	0
AV QUEUE DELAY/DAY (VEH-H)	0
AV TOTAL DELAY/DAY (VEH-H)	0

AVERAGE ACCIDENT NUMBERS (PIA/DAY)	
MAIN ROUTE WITHOUT WORKS	0.0076
MAIN ROUTE WITH WORKS	0.0033
'DIVERSION'	0.0062
PIA: Personal Injury Accidents	
IMPACTS ON ROAD USERS	
ROAD USER COSTS PER DAY	\$147,914
CONGESTED HOURS PER DAY*	10

*Delays Exceeding User-Specified Maximum

IH 94: CTH ZZ/COLLEGE AVE TO CTH BB/RAWSON AVE (MILWAUKEE COUNTY)
OFF-PEAK DAY 2 LANE CLOSURE
NO DIVERSION ROUTE (MAX QUEUE METHOD)

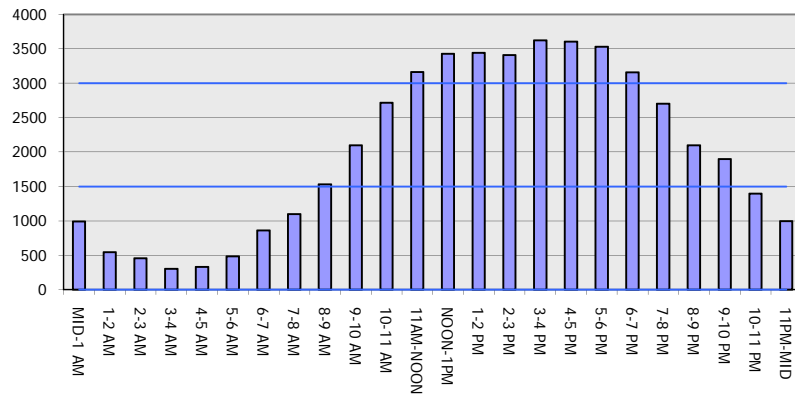
OCTOBER

Analyzed for 2009
 Construction Season

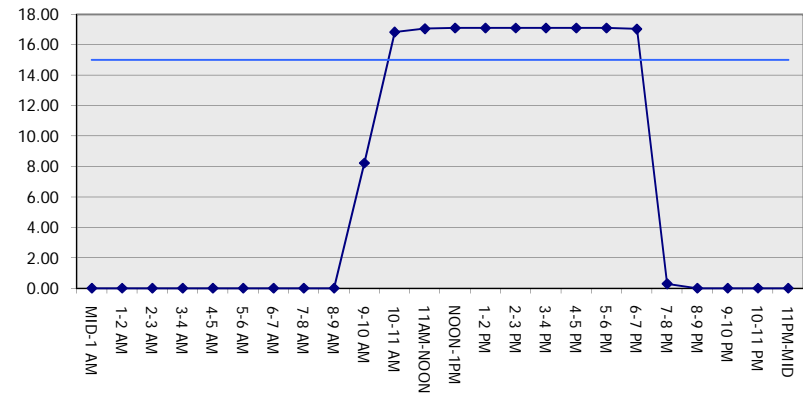
GRAPHICAL REPRESENTATION OF TRAFFIC MODEL INPUT AND OUTPUT

SUNDAY WESTBOUND DIRECTION

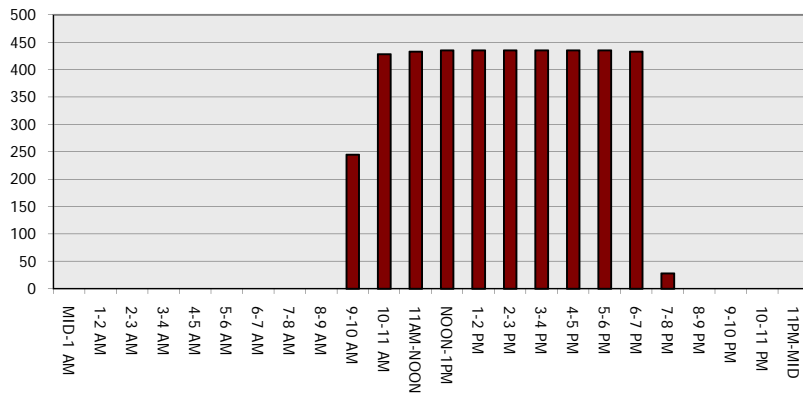
Main Route - Traffic Demand (Vehicles Per Hour)



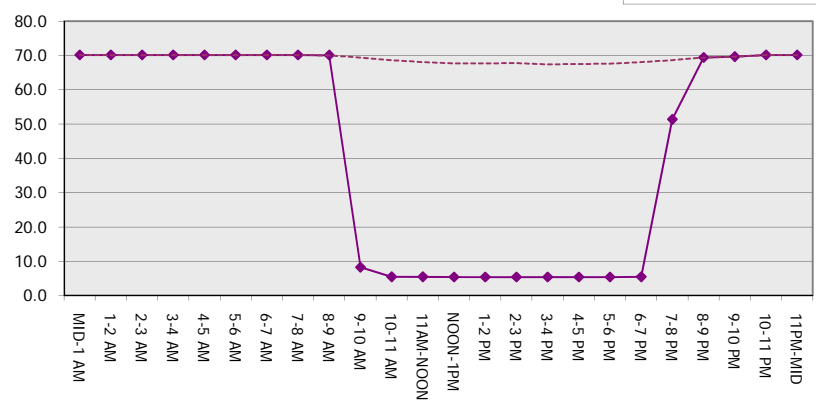
Main Route Average Delay Per Vehicle (Minutes)



Main Route - Average Queue Length (Vehicles)



Main Route - Average Speed (MPH)



IH 94: CTH ZZ/COLLEGE AVE TO CTH BB/RAWSON AVE (MILWAUKEE COUNTY) OFF-PEAK DAY 2 LANE CLOSURE NO DIVERSION ROUTE (MAX QUEUE METHOD)	OCTOBER
	Analyzed for 2009 Construction Season

SUMMARY OF TRAFFIC MODEL OUTPUT

SUNDAY EASTBOUND DIRECTION

TIME OF DAY	FLOWS AND CAPACITY IN VEH/HR							AVERAGE SPEEDS IN MPH		
	MAIN ROUTE		SITE CAPA CITY	FLOW		AV.DEL PER VEH (MINS)	AVERAGE QUEUE (VEH)	MAIN ROUTE		SITE
	DEMAND FLOW	PCT HEAVY		MAIN ROUTE	'DIVER TED'			WITHOUT WORK ZONE	WITH WORK ZONE	
MID-1 AM	986	0.0	OFF	986	0	0.00	0	70.2	70.2	70.2
1-2 AM	668	0.0	OFF	668	0	0.00	0	70.2	70.2	70.2
2-3 AM	716	0.0	OFF	716	0	0.00	0	70.2	70.2	70.2
3-4 AM	450	0.0	OFF	450	0	0.00	0	70.2	70.2	70.2
4-5 AM	484	0.0	OFF	484	0	0.00	0	70.2	70.2	70.2
5-6 AM	665	0.0	OFF	665	0	0.00	0	70.2	70.2	70.2
6-7 AM	988	0.0	OFF	988	0	0.00	0	70.2	70.2	70.2
7-8 AM	1253	0.0	OFF	1253	0	0.00	0	70.2	70.2	70.2
8-9 AM	1690	0.0	OFF	1690	0	0.00	0	69.9	69.9	69.9
9-10 AM	2510	0.0	1499	1920	589	11.88+	315	68.9	6.5	32.5
10-11 AM	3079	0.0	1499	1509	1569	16.98+	431	68.2	5.4	32.5
11AM-NOON	3366	0.0	1500	1500	1866	17.11+	435	67.9	5.3	32.5
NOON-1PM	3820	0.0	1500	1500	2320	17.08+	435	66.1	5.3	32.5
1-2 PM	3995	0.0	1500	1500	2495	17.05+	435	64.9	5.3	32.5
2-3 PM	4023	0.0	1500	1500	2523	17.04+	435	64.6	5.3	32.5
3-4 PM	4138	0.0	1500	1500	2638	17.02+	435	63.9	5.3	32.5
4-5 PM	4078	0.0	1500	1500	2578	17.03+	435	64.3	5.3	32.5
5-6 PM	3633	0.0	1500	1500	2133	17.10+	435	67.3	5.3	32.5
6-7 PM	3401	0.0	1500	1500	1901	17.11+	435	67.8	5.3	32.5
7-8 PM	2848	0.0	OFF	2848	0	0.30	29	68.5	51.0	51.0
8-9 PM	2082	0.0	OFF	2082	0	0.00	0	69.4	69.4	69.4
9-10 PM	1689	0.0	OFF	1689	0	0.00	0	69.9	69.9	69.9
10-11 PM	1212	0.0	OFF	1212	0	0.00	0	70.2	70.2	70.2
11PM-MID	931	0.0	OFF	931	0	0.00	0	70.2	70.2	70.2

"OFF" INDICATES NO ROAD WORK (ALL LANES OPEN TO TRAFFIC)

+ INDICATES QUEUEING EXCEEDS USER-SPECIFIED MAXIMUM LIMIT

----- SITE BREAKDOWN DELAYS -----	
BREAKDOWN DURATION (MINS)	0
RANGE OF QUEUE DELAY - MIN (VEH-H) MAX	0.0
AV BREAKDOWNS PER DAY	0.00
AV QUEUE DELAY/DAY (VEH-H)	0.0
AV TOTAL DELAY/DAY (VEH-H)	0.0

----- SITE ACCIDENT DELAYS -----	
BREAKDOWN DURATION (MINS)	0
RANGE OF QUEUE DELAY - MIN (VEH-H) MAX	0
AV BREAKDOWNS PER DAY	0
AV QUEUE DELAY/DAY (VEH-H)	0
AV TOTAL DELAY/DAY (VEH-H)	0

AVERAGE ACCIDENT NUMBERS (PIA/DAY)	
MAIN ROUTE WITHOUT WORKS	0.0084
MAIN ROUTE WITH WORKS	0.0034
'DIVERSION'	0.0076

PIA: Personal Injury Accidents

ECONOMIC IMPACT ON ROAD USERS	
ROAD USER COSTS PER DAY	\$167,698
CONGESTED HOURS PER DAY*	10

*Delays Exceeding User-Specified Maximum

IH 94: CTH ZZ/COLLEGE AVE TO CTH BB/RAWSON AVE (MILWAUKEE COUNTY)
OFF-PEAK DAY 2 LANE CLOSURE
NO DIVERSION ROUTE (MAX QUEUE METHOD)

OCTOBER

Analyzed for 2009
 Construction Season

GRAPHICAL REPRESENTATION OF TRAFFIC MODEL INPUT AND OUTPUT
SUNDAY EASTBOUND DIRECTION

