

IH 94: CTH ZZ/COLLEGE AVE TO CTH BB/RAWSON AVE (MILWAUKEE COUNTY) OFF-PEAK DAY CLOSURE NO DIVERSION ROUTE (MAX QUEUE METHOD)	OCTOBER
	Analyzed for 2009 Construction Season

SUMMARY OF TRAFFIC MODEL OUTPUT

SUNDAY WESTBOUND DIRECTION

TIME OF DAY	FLOWS AND CAPACITY IN VEH/HR						AVERAGE SPEEDS IN MPH			
	MAIN ROUTE		SITE CAPA CITY	FLOW		AV.DEL PER VEH (MINS)	AVERAGE QUEUE (VEH)	MAIN ROUTE		SITE
	DEMAND FLOW	PCT HEAVY		MAIN ROUTE	'DIVER TED'			WITHOUT WORK ZONE	WITH WORK ZONE	
MID-1 AM	991	0.0	OFF	991	0	0.00	0	70.2	70.2	70.2
1-2 AM	545	0.0	OFF	545	0	0.00	0	70.2	70.2	70.2
2-3 AM	456	0.0	OFF	456	0	0.00	0	70.2	70.2	70.2
3-4 AM	304	0.0	OFF	304	0	0.00	0	70.2	70.2	70.2
4-5 AM	328	0.0	OFF	328	0	0.00	0	70.2	70.2	70.2
5-6 AM	482	0.0	OFF	482	0	0.00	0	70.2	70.2	70.2
6-7 AM	859	0.0	OFF	859	0	0.00	0	70.2	70.2	70.2
7-8 AM	1097	0.0	OFF	1097	0	0.00	0	70.2	70.2	70.2
8-9 AM	1529	0.0	OFF	1529	0	0.00	0	70.1	70.1	70.1
9-10 AM	2098	0.0	3000	2098	0	0.18	0	69.4	57.6	49.7
10-11 AM	2718	0.0	2999	2718	0	0.29	0	68.7	51.5	41.8
11AM-NOON	3164	0.0	2999	3164	0	1.24	60	68.1	28.3	36.9
NOON-1PM	3426	0.0	3000	3426	0	6.80	368	67.8	11.2	36.9
1-2 PM	3443	0.0	2999	3290	153	14.75+	794	67.8	8.6	36.9
2-3 PM	3409	0.0	3000	3012	397	16.79+	903	67.8	8.3	36.9
3-4 PM	3622	0.0	3000	3007	615	16.83+	905	67.4	8.3	36.9
4-5 PM	3606	0.0	3000	3003	603	16.83+	905	67.5	8.3	36.9
5-6 PM	3530	0.0	3000	3001	529	16.82+	904	67.6	8.3	36.9
6-7 PM	3159	0.0	3000	2998	161	16.75+	900	68.1	8.3	36.9
7-8 PM	2702	0.0	OFF	2702	0	1.25	123	68.7	28.3	28.3
8-9 PM	2099	0.0	OFF	2099	0	0.00	0	69.4	69.4	69.4
9-10 PM	1898	0.0	OFF	1898	0	0.00	0	69.7	69.7	69.7
10-11 PM	1396	0.0	OFF	1396	0	0.00	0	70.2	70.2	70.2
11PM-MID	995	0.0	OFF	995	0	0.00	0	70.2	70.2	70.2

"OFF" INDICATES NO ROAD WORK (ALL LANES OPEN TO TRAFFIC)

+ INDICATES QUEUEING EXCEEDS USER-SPECIFIED MAXIMUM LIMIT

----- SITE BREAKDOWN DELAYS -----	
BREAKDOWN DURATION (MINS)	0
RANGE OF QUEUE DELAY - MIN (VEH-H) MAX	0.0
AV BREAKDOWNS PER DAY	0.00
AV QUEUE DELAY/DAY (VEH-H)	0.0
AV TOTAL DELAY/DAY (VEH-H)	0.0

----- SITE ACCIDENT DELAYS -----	
BREAKDOWN DURATION (MINS)	0
RANGE OF QUEUE DELAY - MIN (VEH-H) MAX	0
AV BREAKDOWNS PER DAY	0
AV QUEUE DELAY/DAY (VEH-H)	0
AV TOTAL DELAY/DAY (VEH-H)	0

AVERAGE ACCIDENT NUMBERS (PIA/DAY)	
MAIN ROUTE WITHOUT WORKS	0.0076
MAIN ROUTE WITH WORKS	0.0040
'DIVERSION'	0.0009
PIA: Personal Injury Accidents	
IMPACTS ON ROAD USERS	
ROAD USER COSTS PER DAY	\$101,841
CONGESTED HOURS PER DAY*	6

*Delays Exceeding User-Specified Maximum

IH 94: CTH ZZ/COLLEGE AVE TO CTH BB/RAWSON AVE (MILWAUKEE COUNTY)
OFF-PEAK DAY CLOSURE
NO DIVERSION ROUTE (MAX QUEUE METHOD)

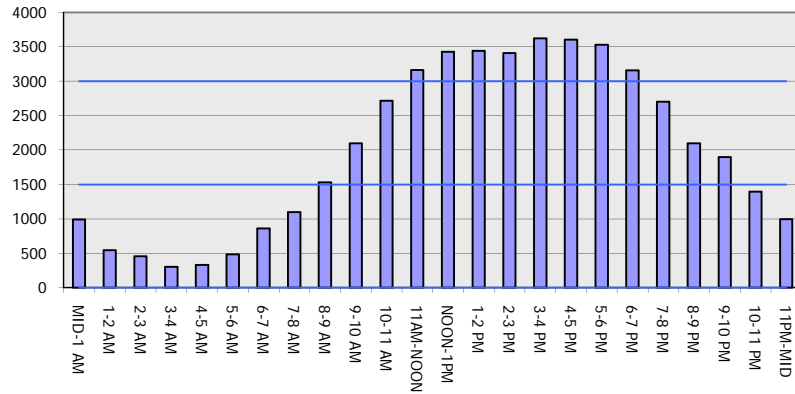
OCTOBER

Analyzed for 2009
 Construction Season

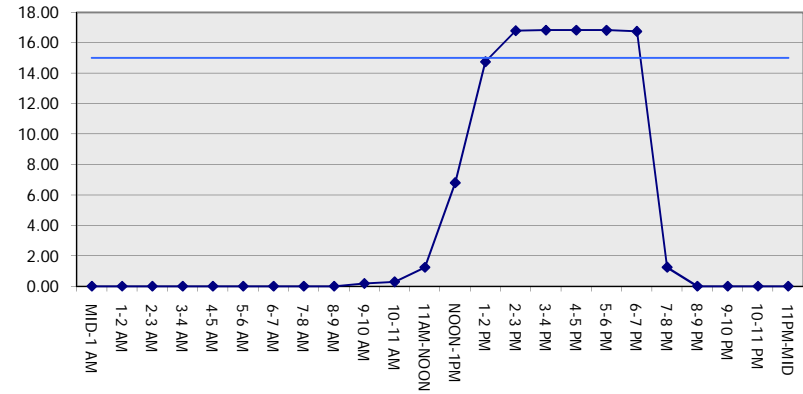
GRAPHICAL REPRESENTATION OF TRAFFIC MODEL INPUT AND OUTPUT

SUNDAY WESTBOUND DIRECTION

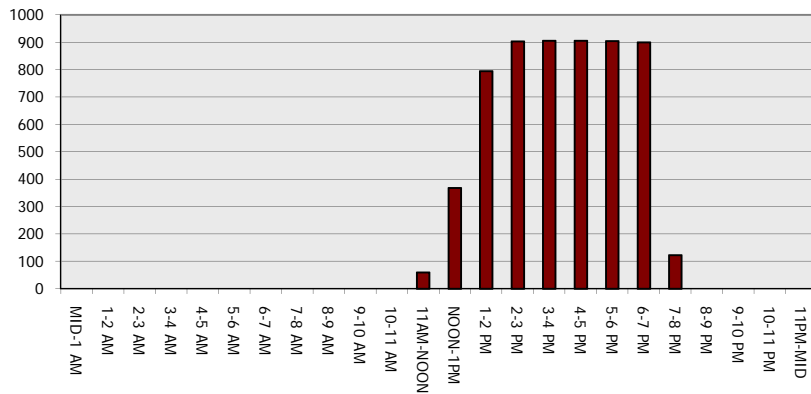
Main Route - Traffic Demand (Vehicles Per Hour)



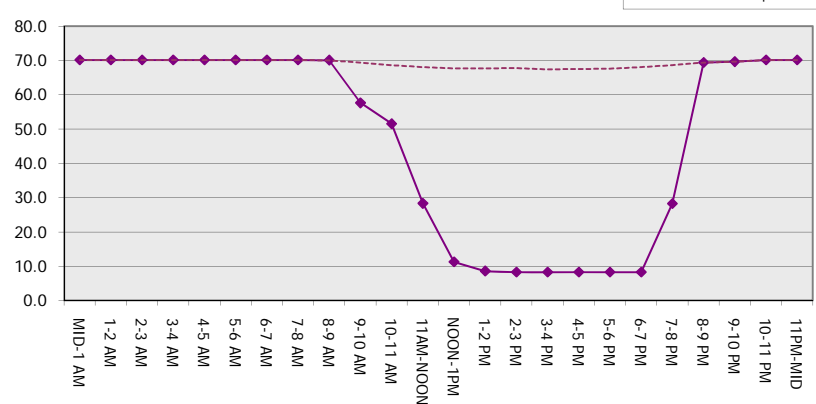
Main Route Average Delay Per Vehicle (Minutes)



Main Route - Average Queue Length (Vehicles)



Main Route - Average Speed (MPH)



IH 94: CTH ZZ/COLLEGE AVE TO CTH BB/RAWSON AVE (MILWAUKEE COUNTY) OFF-PEAK DAY CLOSURE NO DIVERSION ROUTE (MAX QUEUE METHOD)	OCTOBER
	Analyzed for 2009 Construction Season

SUMMARY OF TRAFFIC MODEL OUTPUT

SUNDAY EASTBOUND DIRECTION

TIME OF DAY	FLOWS AND CAPACITY IN VEH/HR						AVERAGE SPEEDS IN MPH			
	MAIN ROUTE		SITE CAPA CITY	FLOW		AV.DEL PER VEH (MINS)	AVERAGE QUEUE (VEH)	MAIN ROUTE		SITE
	DEMAND FLOW	PCT HEAVY		MAIN ROUTE	'DIVER TED'			WITHOUT WORK ZONE	WITH WORK ZONE	
MID-1 AM	986	0.0	OFF	986	0	0.00	0	70.2	70.2	70.2
1-2 AM	668	0.0	OFF	668	0	0.00	0	70.2	70.2	70.2
2-3 AM	716	0.0	OFF	716	0	0.00	0	70.2	70.2	70.2
3-4 AM	450	0.0	OFF	450	0	0.00	0	70.2	70.2	70.2
4-5 AM	484	0.0	OFF	484	0	0.00	0	70.2	70.2	70.2
5-6 AM	665	0.0	OFF	665	0	0.00	0	70.2	70.2	70.2
6-7 AM	988	0.0	OFF	988	0	0.00	0	70.2	70.2	70.2
7-8 AM	1253	0.0	OFF	1253	0	0.00	0	70.2	70.2	70.2
8-9 AM	1690	0.0	OFF	1690	0	0.00	0	69.9	69.9	69.9
9-10 AM	2510	0.0	2999	2510	0	0.23	0	68.9	54.8	46.0
10-11 AM	3079	0.0	2999	3079	0	0.69	23	68.2	38.1	37.1
11AM-NOON	3366	0.0	3000	3366	0	4.65	252	67.9	13.4	36.9
NOON-1PM	3820	0.0	3000	3433	387	14.34+	780	66.1	8.6	36.9
1-2 PM	3995	0.0	3000	3012	984	16.81+	910	64.9	8.3	36.9
2-3 PM	4023	0.0	3000	3004	1019	16.81+	910	64.6	8.3	36.9
3-4 PM	4138	0.0	3000	3009	1129	16.86+	915	63.9	8.3	36.9
4-5 PM	4078	0.0	3000	2997	1081	16.85+	913	64.3	8.3	36.9
5-6 PM	3633	0.0	3000	2995	637	16.83+	906	67.3	8.3	36.9
6-7 PM	3401	0.0	2999	2996	405	16.79+	903	67.8	8.3	36.9
7-8 PM	2848	0.0	OFF	2848	0	1.33	130	68.5	27.2	27.2
8-9 PM	2082	0.0	OFF	2082	0	0.00	0	69.4	69.4	69.4
9-10 PM	1689	0.0	OFF	1689	0	0.00	0	69.9	69.9	69.9
10-11 PM	1212	0.0	OFF	1212	0	0.00	0	70.2	70.2	70.2
11PM-MID	931	0.0	OFF	931	0	0.00	0	70.2	70.2	70.2

"OFF" INDICATES NO ROAD WORK (ALL LANES OPEN TO TRAFFIC)

+ INDICATES QUEUEING EXCEEDS USER-SPECIFIED MAXIMUM LIMIT

----- SITE BREAKDOWN DELAYS -----	
BREAKDOWN DURATION (MINS)	0
RANGE OF QUEUE DELAY - MIN	0.0
(VEH-H) MAX	0.0
AV BREAKDOWNS PER DAY	0.00
AV QUEUE DELAY/DAY (VEH-H)	0.0
AV TOTAL DELAY/DAY (VEH-H)	0.0

----- SITE ACCIDENT DELAYS -----	
BREAKDOWN DURATION (MINS)	0
RANGE OF QUEUE DELAY - MIN	0
(VEH-H) MAX	0
AV BREAKDOWNS PER DAY	0
AV QUEUE DELAY/DAY (VEH-H)	0
AV TOTAL DELAY/DAY (VEH-H)	0

AVERAGE ACCIDENT NUMBERS (PIA/DAY)	
MAIN ROUTE WITHOUT WORKS	0.0084
MAIN ROUTE WITH WORKS	0.0042
'DIVERSION'	0.0021

PIA: Personal Injury Accidents

ECONOMIC IMPACT ON ROAD USERS	
ROAD USER COSTS PER DAY	\$127,650
CONGESTED HOURS PER DAY*	7

*Delays Exceeding User-Specified Maximum

IH 94: CTH ZZ/COLLEGE AVE TO CTH BB/RAWSON AVE (MILWAUKEE COUNTY)
OFF-PEAK DAY CLOSURE
NO DIVERSION ROUTE (MAX QUEUE METHOD)

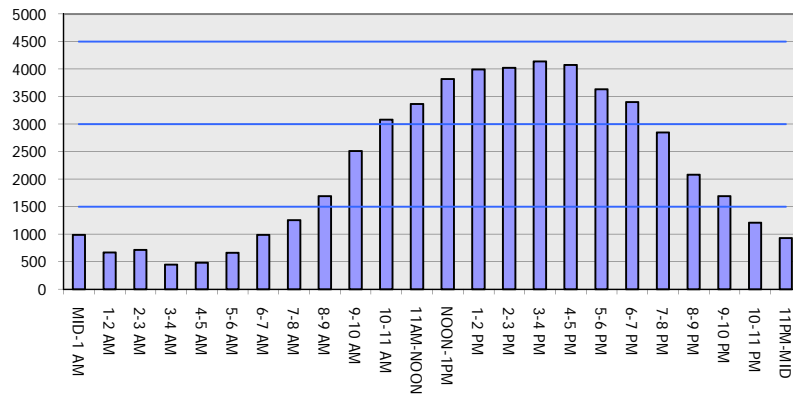
OCTOBER

Analyzed for 2009
 Construction Season

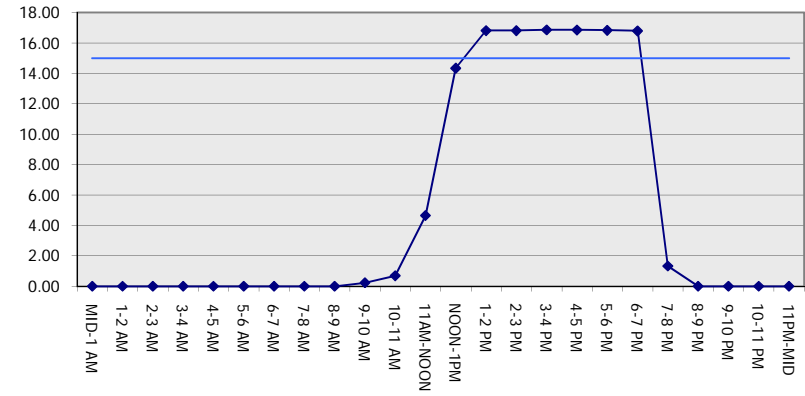
GRAPHICAL REPRESENTATION OF TRAFFIC MODEL INPUT AND OUTPUT

SUNDAY EASTBOUND DIRECTION

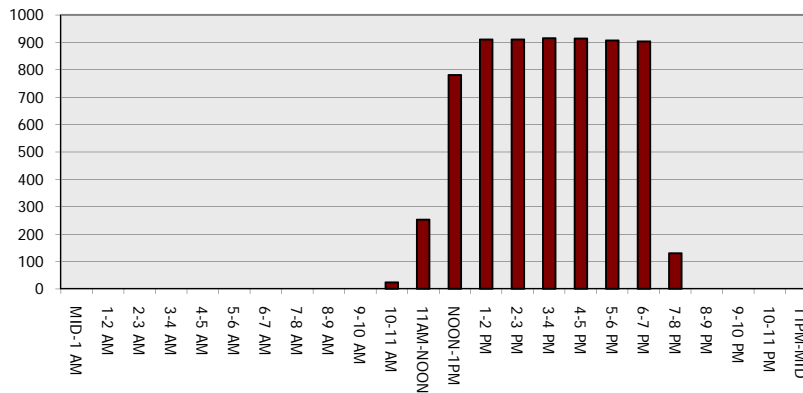
Main Route - Traffic Demand (Vehicles Per Hour)



Main Route Average Delay Per Vehicle (Minutes)



Main Route - Average Queue Length (Vehicles)



Main Route - Average Speed (MPH)

