

<b>IH 94: CTH ZZ/COLLEGE AVE TO CTH BB/RAWSON AVE (MILWAUKEE COUNTY)</b> <b>OFF-PEAK DAY 2 LANE CLOSURE</b> <b>NO DIVERSION ROUTE (MAX QUEUE METHOD)</b>	<b>OCTOBER</b>
	Analyzed for 2009 Construction Season

**SUMMARY OF TRAFFIC MODEL OUTPUT**

MON-THUR                  WESTBOUND DIRECTION

TIME OF DAY	FLOWS AND CAPACITY IN VEH/HR						AVERAGE SPEEDS IN MPH			
	MAIN ROUTE		SITE CAPA CITY	FLOW		AV.DEL PER VEH (MINS)	AVERAGE QUEUE (VEH)	MAIN ROUTE		SITE
	DEMAND FLOW	PCT HEAVY		MAIN ROUTE	'DIVER TED'			WITHOUT WORK ZONE	WITH WORK ZONE	
MID-1 AM	678	0.0	OFF	678	0	0.00	0	70.2	70.2	70.2
1-2 AM	408	0.0	OFF	408	0	0.00	0	70.2	70.2	70.2
2-3 AM	392	0.0	OFF	392	0	0.00	0	70.2	70.2	70.2
3-4 AM	453	0.0	OFF	453	0	0.00	0	70.2	70.2	70.2
4-5 AM	760	0.0	OFF	760	0	0.00	0	70.2	70.2	70.2
5-6 AM	2063	0.0	OFF	2063	0	0.00	0	69.5	69.5	69.5
6-7 AM	4035	0.0	OFF	4035	0	0.00	0	64.6	64.6	64.6
7-8 AM	4512	0.0	OFF	4512	0	0.00	0	61.4	61.4	61.4
8-9 AM	3747	0.0	OFF	3747	0	0.00	0	66.6	66.6	66.6
9-10 AM	3120	0.0	OFF	3120	0	0.00	0	68.2	68.2	68.2
10-11 AM	3015	0.0	1499	1608	1407	15.94+	408	68.3	5.5	38.7
11AM-NOON	3036	0.0	1499	1772	1264	15.25+	399	68.2	5.7	35.7
NOON-1PM	3140	0.0	1499	1534	1605	16.95+	431	68.1	5.4	32.5
1-2 PM	3259	0.0	1500	1508	1751	17.08+	434	68.0	5.4	32.5
2-3 PM	3636	0.0	1500	1500	2136	17.10+	435	67.3	5.3	32.5
3-4 PM	4072	0.0	OFF	4072	0	0.51	46	64.3	41.7	41.7
4-5 PM	3858	0.0	OFF	3858	0	0.00	0	65.8	65.8	65.8
5-6 PM	3719	0.0	OFF	3719	0	0.00	0	66.8	66.8	66.8
6-7 PM	3140	0.0	OFF	3140	0	0.00	0	68.1	68.1	68.1
7-8 PM	2302	0.0	OFF	2302	0	0.00	0	69.2	69.2	69.2
8-9 PM	1888	0.0	OFF	1888	0	0.00	0	69.7	69.7	69.7
9-10 PM	1852	0.0	OFF	1852	0	0.00	0	69.7	69.7	69.7
10-11 PM	1458	0.0	OFF	1458	0	0.00	0	70.2	70.2	70.2
11PM-MID	1029	0.0	OFF	1029	0	0.00	0	70.2	70.2	70.2

"OFF" INDICATES NO ROAD WORK (ALL LANES OPEN TO TRAFFIC)

+ INDICATES QUEUEING EXCEEDS USER-SPECIFIED MAXIMUM LIMIT

*----- SITE BREAKDOWN DELAYS -----*	
BREAKDOWN DURATION (MINS)	0
RANGE OF QUEUE DELAY - MIN	0.0
(VEH-H) MAX	0.0
AV BREAKDOWNS PER DAY	0.00
AV QUEUE DELAY/DAY (VEH-H)	0.0
AV TOTAL DELAY/DAY (VEH-H)	0.0

*----- SITE ACCIDENT DELAYS -----*	
BREAKDOWN DURATION (MINS)	0
RANGE OF QUEUE DELAY - MIN	0
(VEH-H) MAX	0
AV BREAKDOWNS PER DAY	0
AV QUEUE DELAY/DAY (VEH-H)	0
AV TOTAL DELAY/DAY (VEH-H)	0

AVERAGE ACCIDENT NUMBERS (PIA/DAY)	
MAIN ROUTE WITHOUT WORKS	0.0095
MAIN ROUTE WITH WORKS	0.0073
'DIVERSION'	0.0030
PIA: Personal Injury Accidents	
IMPACTS ON ROAD USERS	
ROAD USER COSTS PER DAY	\$58,369
CONGESTED HOURS PER DAY*	5

\*Delays Exceeding User-Specified Maximum

**IH 94: CTH ZZ/COLLEGE AVE TO CTH BB/RAWSON AVE (MILWAUKEE COUNTY)**  
**OFF-PEAK DAY 2 LANE CLOSURE**  
**NO DIVERSION ROUTE (MAX QUEUE METHOD)**

**OCTOBER**

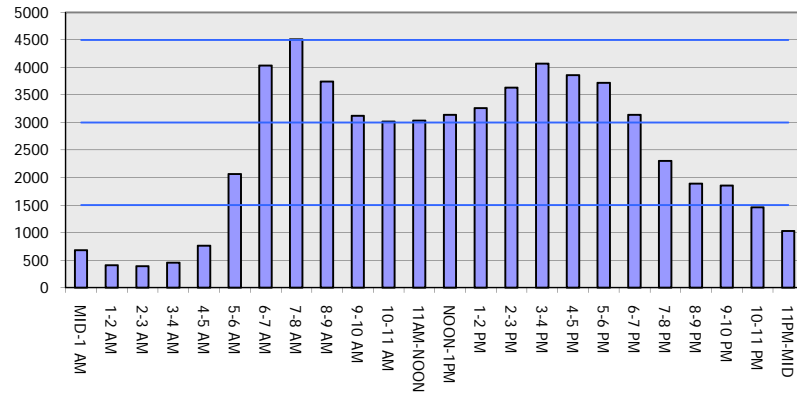
Analyzed for 2009  
 Construction Season

**GRAPHICAL REPRESENTATION OF TRAFFIC MODEL INPUT AND OUTPUT**

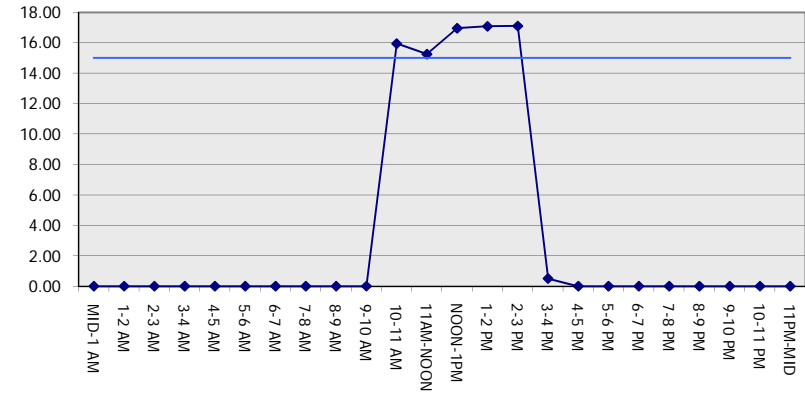
**MON-THUR**

**WESTBOUND DIRECTION**

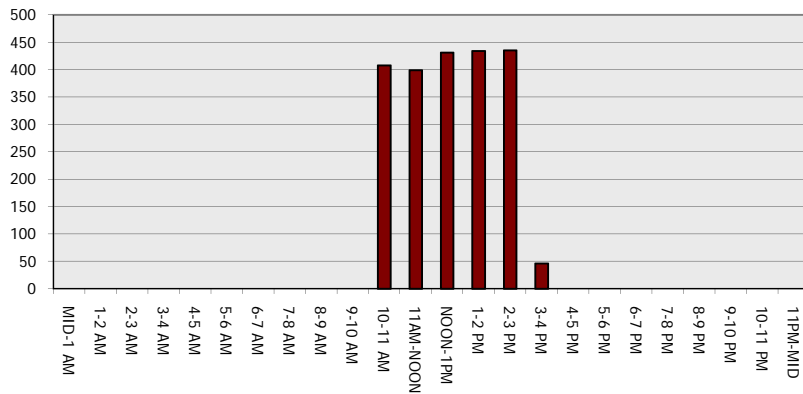
**Main Route - Traffic Demand (Vehicles Per Hour)**



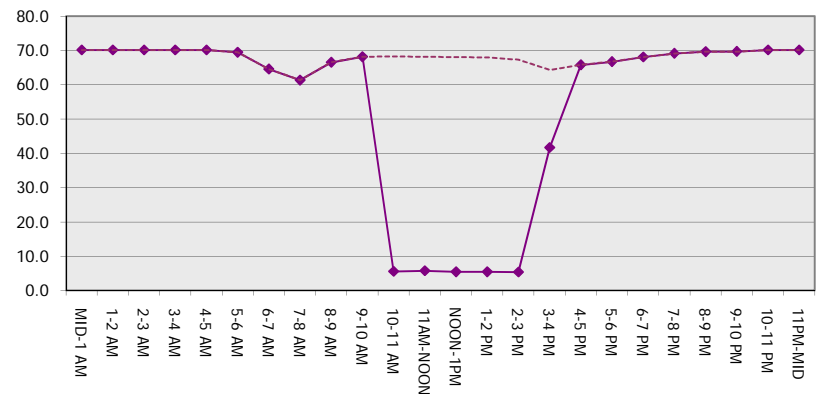
**Main Route Average Delay Per Vehicle (Minutes)**



**Main Route - Average Queue Length (Vehicles)**



**Main Route - Average Speed (MPH)**



<b>IH 94: CTH ZZ/COLLEGE AVE TO CTH BB/RAWSON AVE (MILWAUKEE COUNTY)</b> <b>OFF-PEAK DAY 2 LANE CLOSURE</b> <b>NO DIVERSION ROUTE (MAX QUEUE METHOD)</b>	<b>OCTOBER</b>
	Analyzed for 2009 Construction Season

**SUMMARY OF TRAFFIC MODEL OUTPUT**

MON-THUR                      EASTBOUND DIRECTION

TIME OF DAY	FLOWS AND CAPACITY IN VEH/HR						AVERAGE SPEEDS IN MPH			
	MAIN ROUTE		SITE CAPA CITY	FLOW		AV.DEL PER VEH (MINS)	AVERAGE QUEUE (VEH)	MAIN ROUTE		SITE
	DEMAND FLOW	PCT HEAVY		MAIN ROUTE	'DIVER TED'			WITHOUT WORK ZONE	WITH WORK ZONE	
MID-1 AM	609	0.0	OFF	609	0	0.00	0	70.2	70.2	70.2
1-2 AM	447	0.0	OFF	447	0	0.00	0	70.2	70.2	70.2
2-3 AM	436	0.0	OFF	436	0	0.00	0	70.2	70.2	70.2
3-4 AM	558	0.0	OFF	558	0	0.00	0	70.2	70.2	70.2
4-5 AM	1041	0.0	OFF	1041	0	0.00	0	70.2	70.2	70.2
5-6 AM	2269	0.0	OFF	2269	0	0.00	0	69.2	69.2	69.2
6-7 AM	3858	0.0	OFF	3858	0	0.00	0	65.8	65.8	65.8
7-8 AM	3494	0.0	OFF	3494	0	0.00	0	67.7	67.7	67.7
8-9 AM	3353	0.0	OFF	3353	0	0.00	0	67.9	67.9	67.9
9-10 AM	2985	0.0	OFF	2985	0	0.00	0	68.3	68.3	68.3
10-11 AM	2860	0.0	1499	1765	1095	14.60+	376	68.5	5.8	37.8
11AM-NOON	3065	0.0	1499	1604	1460	16.72+	425	68.2	5.4	32.9
NOON-1PM	3307	0.0	1500	1529	1778	16.98+	431	67.9	5.4	32.4
1-2 PM	3531	0.0	1500	1503	2028	17.09+	435	67.6	5.3	32.5
2-3 PM	4119	0.0	1500	1500	2619	17.03+	435	64.0	5.3	32.5
3-4 PM	4547	0.0	OFF	4547	0	0.60	55	61.1	37.9	37.9
4-5 PM	4843	0.0	OFF	4843	0	0.00	0	59.1	59.1	59.1
5-6 PM	4882	0.0	OFF	4882	0	0.00	0	58.8	58.8	58.8
6-7 PM	3810	0.0	OFF	3810	0	0.00	0	66.1	66.1	66.1
7-8 PM	2715	0.0	OFF	2715	0	0.00	0	68.7	68.7	68.7
8-9 PM	2199	0.0	OFF	2199	0	0.00	0	69.3	69.3	69.3
9-10 PM	1992	0.0	OFF	1992	0	0.00	0	69.6	69.6	69.6
10-11 PM	1515	0.0	OFF	1515	0	0.00	0	70.2	70.2	70.2
11PM-MID	1039	0.0	OFF	1039	0	0.00	0	70.2	70.2	70.2

"OFF" INDICATES NO ROAD WORK (ALL LANES OPEN TO TRAFFIC)

+ INDICATES QUEUEING EXCEEDS USER-SPECIFIED MAXIMUM LIMIT

*----- SITE BREAKDOWN DELAYS -----*	
BREAKDOWN DURATION (MINS)	0
RANGE OF QUEUE DELAY - MIN	0.0
(VEH-H) MAX	0.0
AV BREAKDOWNS PER DAY	0.00
AV QUEUE DELAY/DAY (VEH-H)	0.0
AV TOTAL DELAY/DAY (VEH-H)	0.0

*----- SITE ACCIDENT DELAYS -----*	
BREAKDOWN DURATION (MINS)	0
RANGE OF QUEUE DELAY - MIN	0
(VEH-H) MAX	0
AV BREAKDOWNS PER DAY	0
AV QUEUE DELAY/DAY (VEH-H)	0
AV TOTAL DELAY/DAY (VEH-H)	0

AVERAGE ACCIDENT NUMBERS (PIA/DAY)	
MAIN ROUTE WITHOUT WORKS	0.0101
MAIN ROUTE WITH WORKS	0.0078
'DIVERSION'	0.0033

PIA: Personal Injury Accidents

ECONOMIC IMPACT ON ROAD USERS	
ROAD USER COSTS PER DAY	\$61,616
CONGESTED HOURS PER DAY*	5

\*Delays Exceeding User-Specified Maximum

**IH 94: CTH ZZ/COLLEGE AVE TO CTH BB/RAWSON AVE (MILWAUKEE COUNTY)**  
**OFF-PEAK DAY 2 LANE CLOSURE**  
**NO DIVERSION ROUTE (MAX QUEUE METHOD)**

**OCTOBER**

Analyzed for 2009  
 Construction Season

**GRAPHICAL REPRESENTATION OF TRAFFIC MODEL INPUT AND OUTPUT**

**MON-THUR EASTBOUND DIRECTION**

