

IH 94: CTH ZZ/COLLEGE AVE TO CTH BB/RAWSON AVE (MILWAUKEE COUNTY) OFF-PEAK DAY CLOSURE NO DIVERSION ROUTE (MAX QUEUE METHOD)	OCTOBER
	Analyzed for 2009 Construction Season

SUMMARY OF TRAFFIC MODEL OUTPUT

MON-THUR WESTBOUND DIRECTION

TIME OF DAY	FLOWS AND CAPACITY IN VEH/HR						AVERAGE SPEEDS IN MPH				
	MAIN ROUTE		SITE CAPA CITY	FLOW		AV.DEL PER VEH (MINS)	AVERAGE QUEUE (VEH)	MAIN ROUTE		SITE	
	DEMAND FLOW	PCT HEAVY		MAIN ROUTE	'DIVER TED'			WITHOUT WORK ZONE	WITH WORK ZONE		
MID-1 AM	678	0.0	OFF	678	0	0.00	0	70.2	70.2	70.2	
1-2 AM	408	0.0	OFF	408	0	0.00	0	70.2	70.2	70.2	
2-3 AM	392	0.0	OFF	392	0	0.00	0	70.2	70.2	70.2	
3-4 AM	453	0.0	OFF	453	0	0.00	0	70.2	70.2	70.2	
4-5 AM	760	0.0	OFF	760	0	0.00	0	70.2	70.2	70.2	
5-6 AM	2063	0.0	OFF	2063	0	0.00	0	69.5	69.5	69.5	
6-7 AM	4035	0.0	OFF	4035	0	0.00	0	64.6	64.6	64.6	
7-8 AM	4512	0.0	OFF	4512	0	0.00	0	61.4	61.4	61.4	
8-9 AM	3747	0.0	OFF	3747	0	0.00	0	66.6	66.6	66.6	
9-10 AM	3120	0.0	OFF	3120	0	0.00	0	68.2	68.2	68.2	
10-11 AM	3015	0.0	2999	3015	0	0.57	10	68.3	41.5	36.9	
11AM-NOON	3036	0.0	3000	3036	0	0.90	29	68.2	33.7	36.9	
NOON-1PM	3140	0.0	3000	3140	0	2.34	113	68.1	19.1	36.9	
1-2 PM	3259	0.0	3000	3259	0	5.79	304	68.0	11.9	36.9	
2-3 PM	3636	0.0	3000	3470	166	13.28+	720	67.3	8.8	36.9	
3-4 PM	4072	0.0	OFF	4072	0	2.29	219	64.3	18.6	18.6	
4-5 PM	3858	0.0	OFF	3858	0	0.00	0	65.8	65.8	65.8	
5-6 PM	3719	0.0	OFF	3719	0	0.00	0	66.8	66.8	66.8	
6-7 PM	3140	0.0	OFF	3140	0	0.00	0	68.1	68.1	68.1	
7-8 PM	2302	0.0	OFF	2302	0	0.00	0	69.2	69.2	69.2	
8-9 PM	1888	0.0	OFF	1888	0	0.00	0	69.7	69.7	69.7	
9-10 PM	1852	0.0	OFF	1852	0	0.00	0	69.7	69.7	69.7	
10-11 PM	1458	0.0	OFF	1458	0	0.00	0	70.2	70.2	70.2	
11PM-MID	1029	0.0	OFF	1029	0	0.00	0	70.2	70.2	70.2	

"OFF" INDICATES NO ROAD WORK (ALL LANES OPEN TO TRAFFIC)

+ INDICATES QUEUEING EXCEEDS USER-SPECIFIED MAXIMUM LIMIT

----- SITE BREAKDOWN DELAYS -----	
BREAKDOWN DURATION (MINS)	0
RANGE OF QUEUE DELAY - MIN (VEH-H) MAX	0.0
AV BREAKDOWNS PER DAY	0.00
AV QUEUE DELAY/DAY (VEH-H)	0.0
AV TOTAL DELAY/DAY (VEH-H)	0.0

----- SITE ACCIDENT DELAYS -----	
BREAKDOWN DURATION (MINS)	0
RANGE OF QUEUE DELAY - MIN (VEH-H) MAX	0
AV BREAKDOWNS PER DAY	0
AV QUEUE DELAY/DAY (VEH-H)	0
AV TOTAL DELAY/DAY (VEH-H)	0

AVERAGE ACCIDENT NUMBERS (PIA/DAY)	
MAIN ROUTE WITHOUT WORKS	0.0095
MAIN ROUTE WITH WORKS	0.0077
'DIVERSION'	0.0001
PIA: Personal Injury Accidents	
IMPACTS ON ROAD USERS	
ROAD USER COSTS PER DAY	\$16,100
CONGESTED HOURS PER DAY*	1

*Delays Exceeding User-Specified Maximum

IH 94: CTH ZZ/COLLEGE AVE TO CTH BB/RAWSON AVE (MILWAUKEE COUNTY)
OFF-PEAK DAY CLOSURE
NO DIVERSION ROUTE (MAX QUEUE METHOD)

OCTOBER

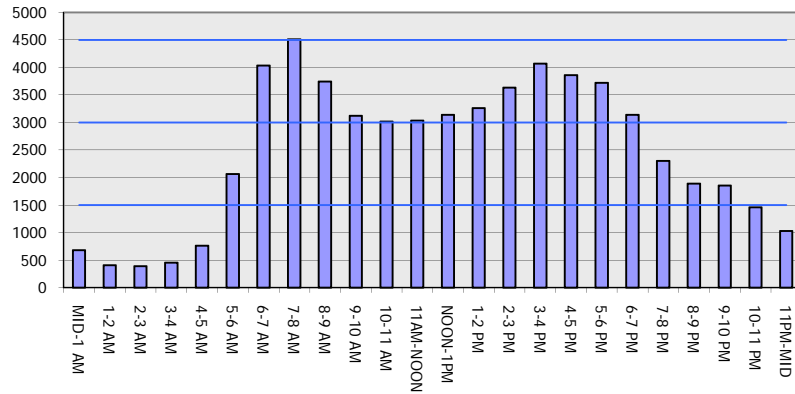
Analyzed for 2009
 Construction Season

GRAPHICAL REPRESENTATION OF TRAFFIC MODEL INPUT AND OUTPUT

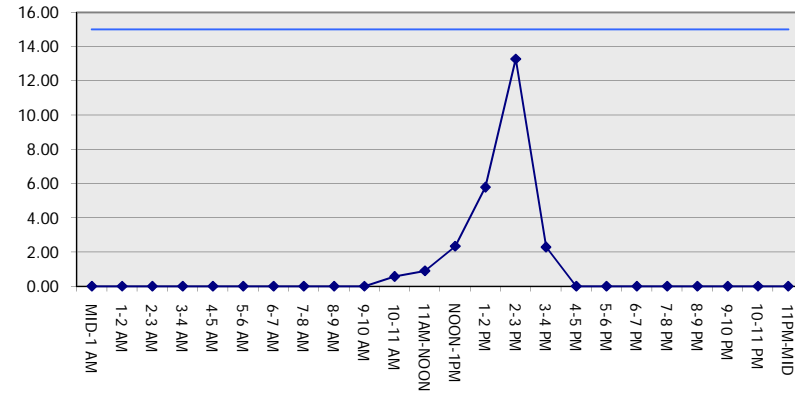
MON-THUR

WESTBOUND DIRECTION

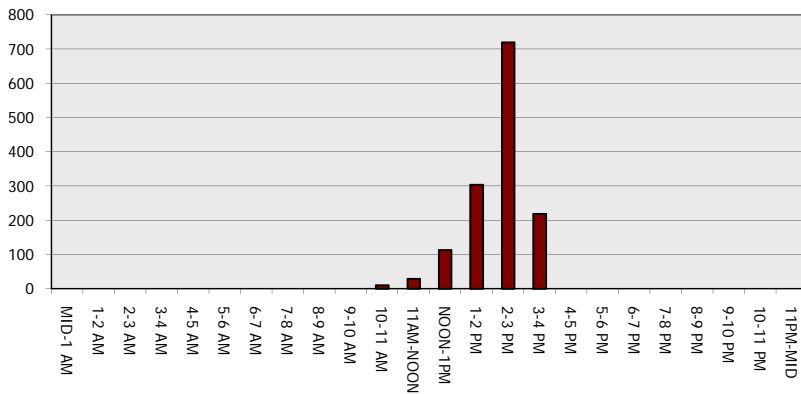
Main Route - Traffic Demand (Vehicles Per Hour)



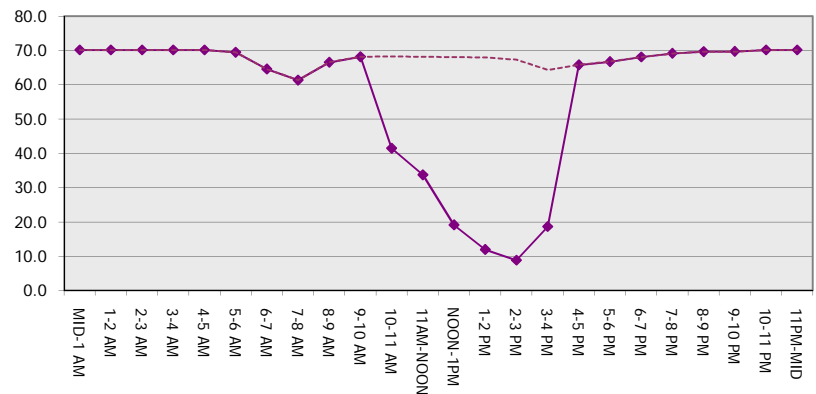
Main Route Average Delay Per Vehicle (Minutes)



Main Route - Average Queue Length (Vehicles)



Main Route - Average Speed (MPH)



IH 94: CTH ZZ/COLLEGE AVE TO CTH BB/RAWSON AVE (MILWAUKEE COUNTY) OFF-PEAK DAY CLOSURE NO DIVERSION ROUTE (MAX QUEUE METHOD)	OCTOBER
	Analyzed for 2009 Construction Season

SUMMARY OF TRAFFIC MODEL OUTPUT

MON-THUR EASTBOUND DIRECTION

TIME OF DAY	FLOWS AND CAPACITY IN VEH/HR							AVERAGE SPEEDS IN MPH		
	MAIN ROUTE		SITE CAPA CITY	FLOW		AV.DEL PER VEH (MINS)	AVERAGE QUEUE (VEH)	MAIN ROUTE		SITE
	DEMAND FLOW	PCT HEAVY		MAIN ROUTE	'DIVER TED'			WITHOUT WORK ZONE	WITH WORK ZONE	
MID-1 AM	609	0.0	OFF	609	0	0.00	0	70.2	70.2	70.2
1-2 AM	447	0.0	OFF	447	0	0.00	0	70.2	70.2	70.2
2-3 AM	436	0.0	OFF	436	0	0.00	0	70.2	70.2	70.2
3-4 AM	558	0.0	OFF	558	0	0.00	0	70.2	70.2	70.2
4-5 AM	1041	0.0	OFF	1041	0	0.00	0	70.2	70.2	70.2
5-6 AM	2269	0.0	OFF	2269	0	0.00	0	69.2	69.2	69.2
6-7 AM	3858	0.0	OFF	3858	0	0.00	0	65.8	65.8	65.8
7-8 AM	3494	0.0	OFF	3494	0	0.00	0	67.7	67.7	67.7
8-9 AM	3353	0.0	OFF	3353	0	0.00	0	67.9	67.9	67.9
9-10 AM	2985	0.0	OFF	2985	0	0.00	0	68.3	68.3	68.3
10-11 AM	2860	0.0	2999	2860	0	0.34	0	68.5	49.4	39.1
11AM-NOON	3065	0.0	2999	3065	0	0.66	18	68.2	38.9	36.9
NOON-1PM	3307	0.0	3000	3307	0	3.79	203	67.9	14.7	36.9
1-2 PM	3531	0.0	3000	3531	0	11.28+	612	67.6	9.3	36.9
2-3 PM	4119	0.0	2999	3027	1091	16.90+	916	64.0	8.2	36.9
3-4 PM	4547	0.0	OFF	4547	0	3.09	297	61.1	14.7	14.7
4-5 PM	4843	0.0	OFF	4843	0	0.00	0	59.1	59.1	59.1
5-6 PM	4882	0.0	OFF	4882	0	0.00	0	58.8	58.8	58.8
6-7 PM	3810	0.0	OFF	3810	0	0.00	0	66.1	66.1	66.1
7-8 PM	2715	0.0	OFF	2715	0	0.00	0	68.7	68.7	68.7
8-9 PM	2199	0.0	OFF	2199	0	0.00	0	69.3	69.3	69.3
9-10 PM	1992	0.0	OFF	1992	0	0.00	0	69.6	69.6	69.6
10-11 PM	1515	0.0	OFF	1515	0	0.00	0	70.2	70.2	70.2
11PM-MID	1039	0.0	OFF	1039	0	0.00	0	70.2	70.2	70.2

"OFF" INDICATES NO ROAD WORK (ALL LANES OPEN TO TRAFFIC)

+ INDICATES QUEUEING EXCEEDS USER-SPECIFIED MAXIMUM LIMIT

----- SITE BREAKDOWN DELAYS -----	
BREAKDOWN DURATION (MINS)	0
RANGE OF QUEUE DELAY - MIN (VEH-H) MAX	0.0
AV BREAKDOWNS PER DAY	0.00
AV QUEUE DELAY/DAY (VEH-H)	0.0
AV TOTAL DELAY/DAY (VEH-H)	0.0

----- SITE ACCIDENT DELAYS -----	
BREAKDOWN DURATION (MINS)	0
RANGE OF QUEUE DELAY - MIN (VEH-H) MAX	0
AV BREAKDOWNS PER DAY	0
AV QUEUE DELAY/DAY (VEH-H)	0
AV TOTAL DELAY/DAY (VEH-H)	0

AVERAGE ACCIDENT NUMBERS (PIA/DAY)	
MAIN ROUTE WITHOUT WORKS	0.0101
MAIN ROUTE WITH WORKS	0.0082
'DIVERSION'	0.0004

PIA: Personal Injury Accidents

ECONOMIC IMPACT ON ROAD USERS	
ROAD USER COSTS PER DAY	\$25,354
CONGESTED HOURS PER DAY*	2

*Delays Exceeding User-Specified Maximum

IH 94: CTH ZZ/COLLEGE AVE TO CTH BB/RAWSON AVE (MILWAUKEE COUNTY)
OFF-PEAK DAY CLOSURE
NO DIVERSION ROUTE (MAX QUEUE METHOD)

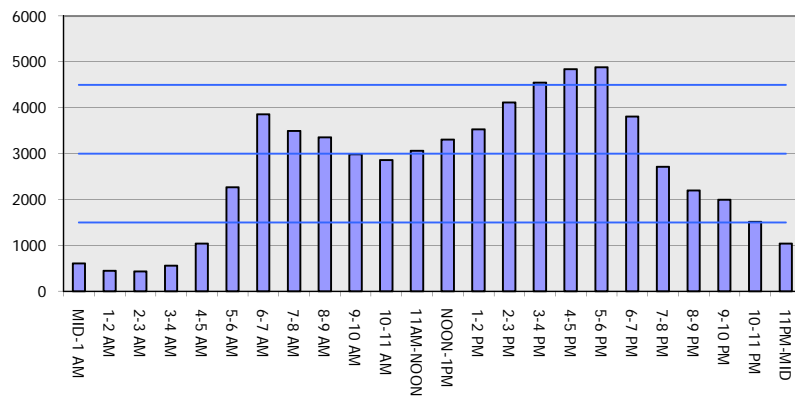
OCTOBER

Analyzed for 2009
 Construction Season

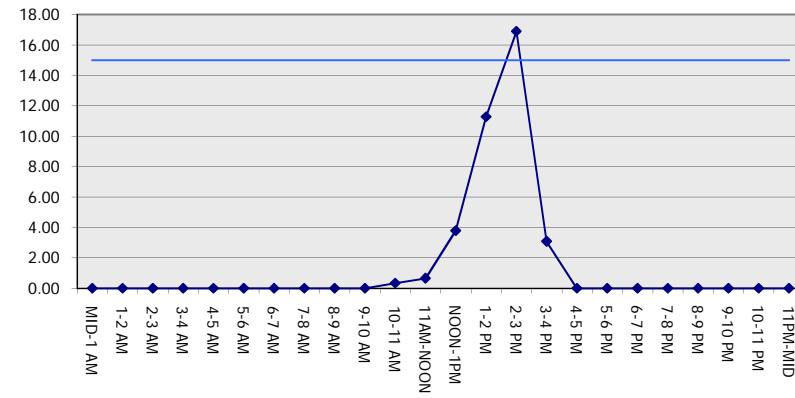
GRAPHICAL REPRESENTATION OF TRAFFIC MODEL INPUT AND OUTPUT

MON-THUR EASTBOUND DIRECTION

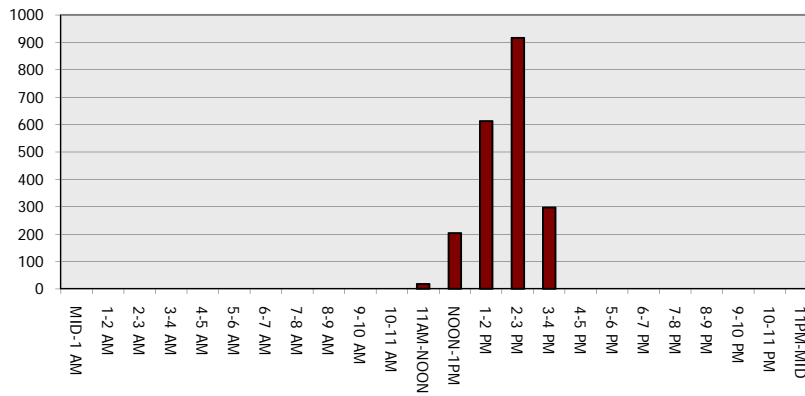
Main Route - Traffic Demand (Vehicles Per Hour)



Main Route Average Delay Per Vehicle (Minutes)



Main Route - Average Queue Length (Vehicles)



Main Route - Average Speed (MPH)

