

<b>IH 94: CTH ZZ/COLLEGE AVE TO CTH BB/RAWSON AVE (MILWAUKEE COUNTY)</b> <b>OFF-PEAK DAY 2 LANE CLOSURE</b> <b>NO DIVERSION ROUTE (MAX QUEUE METHOD)</b>	<b>OCTOBER</b>
	Analyzed for 2009 Construction Season

**SUMMARY OF TRAFFIC MODEL OUTPUT**

FRIDAY WESTBOUND DIRECTION

TIME OF DAY	FLOWS AND CAPACITY IN VEH/HR						AVERAGE SPEEDS IN MPH				
	MAIN ROUTE		SITE CAPA CITY	FLOW		AV.DEL PER VEH (MINS)	AVERAGE QUEUE (VEH)	MAIN ROUTE		SITE	
	DEMAND FLOW	PCT HEAVY		MAIN ROUTE	'DIVER TED'			WITHOUT WORK ZONE	WITH WORK ZONE		
MID-1 AM	817	0.0	OFF	817	0	0.00	0	70.2	70.2	70.2	
1-2 AM	524	0.0	OFF	524	0	0.00	0	70.2	70.2	70.2	
2-3 AM	490	0.0	OFF	490	0	0.00	0	70.2	70.2	70.2	
3-4 AM	560	0.0	OFF	560	0	0.00	0	70.2	70.2	70.2	
4-5 AM	771	0.0	OFF	771	0	0.00	0	70.2	70.2	70.2	
5-6 AM	2109	0.0	OFF	2109	0	0.00	0	69.4	69.4	69.4	
6-7 AM	4067	0.0	OFF	4067	0	0.00	0	64.4	64.4	64.4	
7-8 AM	4537	0.0	OFF	4537	0	0.00	0	61.2	61.2	61.2	
8-9 AM	3821	0.0	OFF	3821	0	0.00	0	66.1	66.1	66.1	
9-10 AM	3340	0.0	OFF	3340	0	0.00	0	67.9	67.9	67.9	
10-11 AM	3512	0.0	1499	1589	1923	17.21+	442	67.7	5.4	38.9	
11AM-NOON	3694	0.0	1499	1832	1862	15.47+	405	66.9	5.7	36.0	
NOON-1PM	3873	0.0	1499	1500	2373	17.07+	435	65.7	5.3	32.5	
1-2 PM	3898	0.0	1500	1500	2398	17.06+	435	65.5	5.3	32.5	
2-3 PM	4468	0.0	1500	1500	2968	16.97+	435	61.7	5.3	32.5	
3-4 PM	4674	0.0	OFF	4674	0	0.72	67	60.2	35.0	35.0	
4-5 PM	4413	0.0	OFF	4413	0	0.00	0	62.0	62.0	62.0	
5-6 PM	4450	0.0	OFF	4450	0	0.00	0	61.7	61.7	61.7	
6-7 PM	4001	0.0	OFF	4001	0	0.00	0	64.8	64.8	64.8	
7-8 PM	3368	0.0	OFF	3368	0	0.00	0	67.9	67.9	67.9	
8-9 PM	2688	0.0	OFF	2688	0	0.00	0	68.7	68.7	68.7	
9-10 PM	2538	0.0	OFF	2538	0	0.00	0	68.9	68.9	68.9	
10-11 PM	2017	0.0	OFF	2017	0	0.00	0	69.6	69.6	69.6	
11PM-MID	1538	0.0	OFF	1538	0	0.00	0	70.1	70.1	70.1	

"OFF" INDICATES NO ROAD WORK (ALL LANES OPEN TO TRAFFIC)

+ INDICATES QUEUEING EXCEEDS USER-SPECIFIED MAXIMUM LIMIT

*----- SITE BREAKDOWN DELAYS -----*	
BREAKDOWN DURATION (MINS)	0
RANGE OF QUEUE DELAY - MIN (VEH-H) MAX	0.0
AV BREAKDOWNS PER DAY	0.00
AV QUEUE DELAY/DAY (VEH-H)	0.0
AV TOTAL DELAY/DAY (VEH-H)	0.0

*----- SITE ACCIDENT DELAYS -----*	
BREAKDOWN DURATION (MINS)	0
RANGE OF QUEUE DELAY - MIN (VEH-H) MAX	0
AV BREAKDOWNS PER DAY	0
AV QUEUE DELAY/DAY (VEH-H)	0
AV TOTAL DELAY/DAY (VEH-H)	0

AVERAGE ACCIDENT NUMBERS (PIA/DAY)	
MAIN ROUTE WITHOUT WORKS	0.0112
MAIN ROUTE WITH WORKS	0.0085
'DIVERSION'	0.0042
PIA: Personal Injury Accidents	
IMPACTS ON ROAD USERS	
ROAD USER COSTS PER DAY	\$73,355
CONGESTED HOURS PER DAY*	5

\*Delays Exceeding User-Specified Maximum

**IH 94: CTH ZZ/COLLEGE AVE TO CTH BB/RAWSON AVE (MILWAUKEE COUNTY)**  
**OFF-PEAK DAY 2 LANE CLOSURE**  
**NO DIVERSION ROUTE (MAX QUEUE METHOD)**

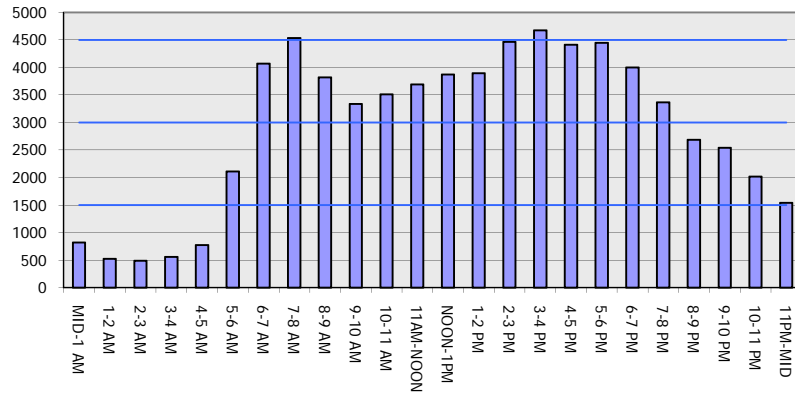
**OCTOBER**

Analyzed for 2009  
 Construction Season

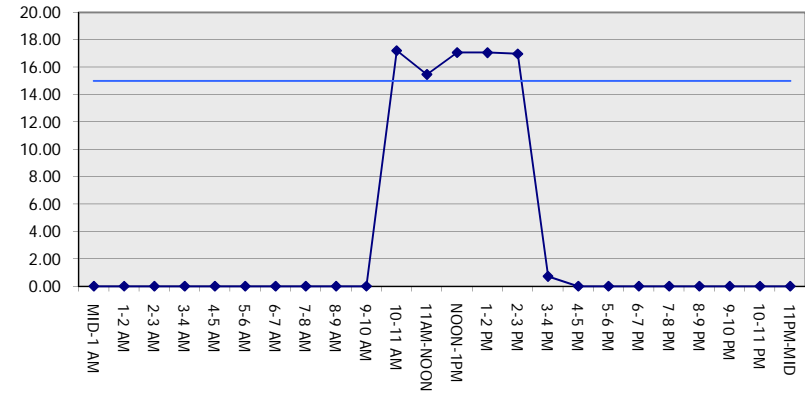
**GRAPHICAL REPRESENTATION OF TRAFFIC MODEL INPUT AND OUTPUT**

**FRIDAY WESTBOUND DIRECTION**

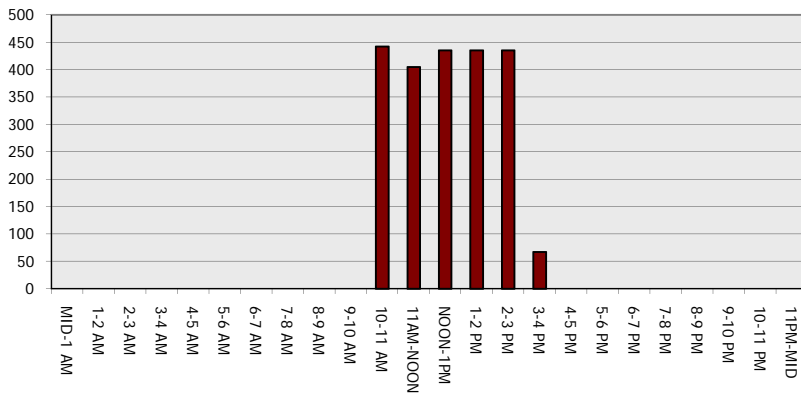
**Main Route - Traffic Demand (Vehicles Per Hour)**



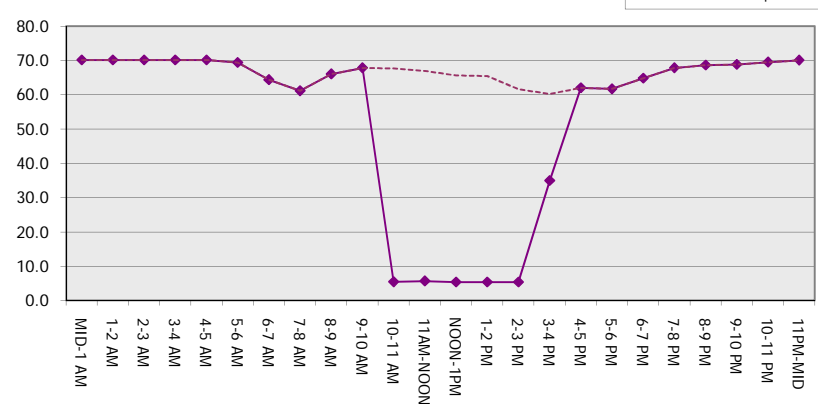
**Main Route Average Delay Per Vehicle (Minutes)**



**Main Route - Average Queue Length (Vehicles)**



**Main Route - Average Speed (MPH)**



<b>IH 94: CTH ZZ/COLLEGE AVE TO CTH BB/RAWSON AVE (MILWAUKEE COUNTY)</b> <b>OFF-PEAK DAY 2 LANE CLOSURE</b> <b>NO DIVERSION ROUTE (MAX QUEUE METHOD)</b>	<b>OCTOBER</b>
	Analyzed for 2009 Construction Season

**SUMMARY OF TRAFFIC MODEL OUTPUT**

FRIDAY EASTBOUND DIRECTION

TIME OF DAY	FLOWS AND CAPACITY IN VEH/HR						AVERAGE SPEEDS IN MPH			
	MAIN ROUTE		SITE CAPA CITY	FLOW		AV.DEL PER VEH (MINS)	AVERAGE QUEUE (VEH)	MAIN ROUTE		SITE
	DEMAND FLOW	PCT HEAVY		MAIN ROUTE	'DIVER TED'			WITHOUT WORK ZONE	WITH WORK ZONE	
MID-1 AM	713	0.0	OFF	713	0	0.00	0	70.2	70.2	70.2
1-2 AM	524	0.0	OFF	524	0	0.00	0	70.2	70.2	70.2
2-3 AM	509	0.0	OFF	509	0	0.00	0	70.2	70.2	70.2
3-4 AM	666	0.0	OFF	666	0	0.00	0	70.2	70.2	70.2
4-5 AM	1096	0.0	OFF	1096	0	0.00	0	70.2	70.2	70.2
5-6 AM	2196	0.0	OFF	2196	0	0.00	0	69.3	69.3	69.3
6-7 AM	3706	0.0	OFF	3706	0	0.00	0	66.8	66.8	66.8
7-8 AM	3665	0.0	OFF	3665	0	0.00	0	67.1	67.1	67.1
8-9 AM	3240	0.0	OFF	3240	0	0.00	0	68.0	68.0	68.0
9-10 AM	3078	0.0	OFF	3078	0	0.00	0	68.2	68.2	68.2
10-11 AM	3151	0.0	1499	1565	1585	16.35+	419	68.1	5.5	39.0
11AM-NOON	3397	0.0	1503	1674	1723	15.26+	407	67.8	5.8	38.0
NOON-1PM	3706	0.0	1499	1590	2116	16.71+	427	66.8	5.4	36.0
1-2 PM	3960	0.0	1500	1515	2445	16.94+	433	65.1	5.4	34.6
2-3 PM	4536	0.0	1500	1500	3035	16.90+	435	61.2	5.4	34.7
3-4 PM	4808	0.0	OFF	4808	0	0.53	48	59.3	38.9	38.9
4-5 PM	5164	0.0	OFF	5164	0	0.00	0	56.9	56.9	56.9
5-6 PM	5050	0.0	OFF	5050	0	0.00	0	57.6	57.6	57.6
6-7 PM	3979	0.0	OFF	3979	0	0.00	0	65.0	65.0	65.0
7-8 PM	2990	0.0	OFF	2990	0	0.00	0	68.3	68.3	68.3
8-9 PM	2328	0.0	OFF	2328	0	0.00	0	69.1	69.1	69.1
9-10 PM	2260	0.0	OFF	2260	0	0.00	0	69.2	69.2	69.2
10-11 PM	1872	0.0	OFF	1872	0	0.00	0	69.7	69.7	69.7
11PM-MID	1372	0.0	OFF	1372	0	0.00	0	70.2	70.2	70.2

"OFF" INDICATES NO ROAD WORK (ALL LANES OPEN TO TRAFFIC)

+ INDICATES QUEUEING EXCEEDS USER-SPECIFIED MAXIMUM LIMIT

*----- SITE BREAKDOWN DELAYS -----*	
BREAKDOWN DURATION (MINS)	0
RANGE OF QUEUE DELAY - MIN	0.0
(VEH-H) MAX	0.0
AV BREAKDOWNS PER DAY	0.00
AV QUEUE DELAY/DAY (VEH-H)	0.0
AV TOTAL DELAY/DAY (VEH-H)	0.0

*----- SITE ACCIDENT DELAYS -----*	
BREAKDOWN DURATION (MINS)	0
RANGE OF QUEUE DELAY - MIN	0
(VEH-H) MAX	0
AV BREAKDOWNS PER DAY	0
AV QUEUE DELAY/DAY (VEH-H)	0
AV TOTAL DELAY/DAY (VEH-H)	0

AVERAGE ACCIDENT NUMBERS (PIA/DAY)	
MAIN ROUTE WITHOUT WORKS	0.0108
MAIN ROUTE WITH WORKS	0.0082
'DIVERSION'	0.0040

PIA: Personal Injury Accidents

ECONOMIC IMPACT ON ROAD USERS	
ROAD USER COSTS PER DAY	\$69,388
CONGESTED HOURS PER DAY*	5

\*Delays Exceeding User-Specified Maximum

**IH 94: CTH ZZ/COLLEGE AVE TO CTH BB/RAWSON AVE (MILWAUKEE COUNTY)**  
**OFF-PEAK DAY 2 LANE CLOSURE**  
**NO DIVERSION ROUTE (MAX QUEUE METHOD)**

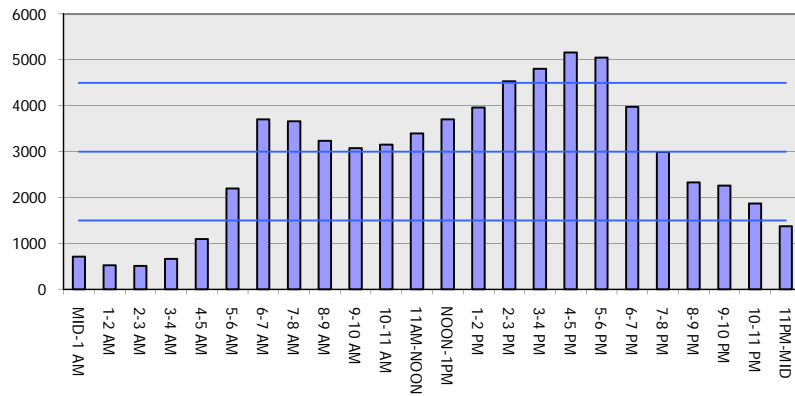
**OCTOBER**

Analyzed for 2009  
 Construction Season

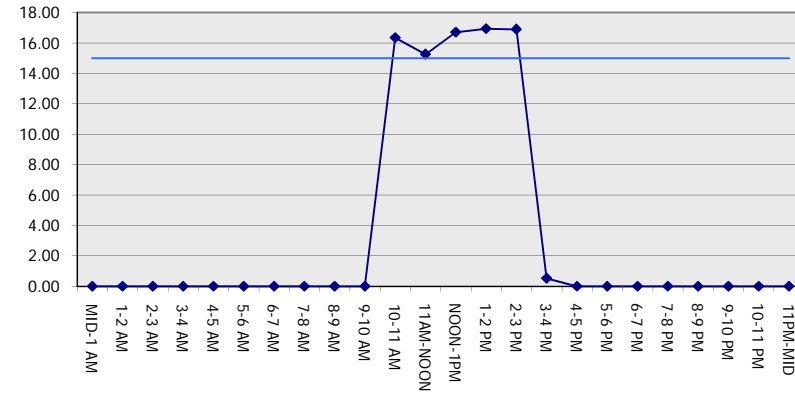
**GRAPHICAL REPRESENTATION OF TRAFFIC MODEL INPUT AND OUTPUT**

**FRIDAY EASTBOUND DIRECTION**

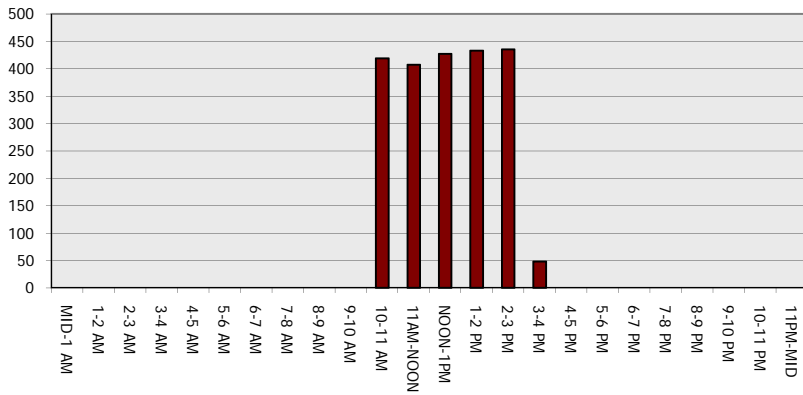
**Main Route - Traffic Demand (Vehicles Per Hour)**



**Main Route Average Delay Per Vehicle (Minutes)**



**Main Route - Average Queue Length (Vehicles)**



**Main Route - Average Speed (MPH)**

