

IH 94: CTH ZZ/COLLEGE AVE TO CTH BB/RAWSON AVE (MILWAUKEE COUNTY) OFF-PEAK DAY CLOSURE NO DIVERSION ROUTE (MAX QUEUE METHOD)	MAY
	Analyzed for 2009 Construction Season

SUMMARY OF TRAFFIC MODEL OUTPUT

MON-THUR WESTBOUND DIRECTION

TIME OF DAY	FLOWS AND CAPACITY IN VEH/HR						AVERAGE SPEEDS IN MPH			
	MAIN ROUTE		SITE CAPA CITY	FLOW		AV.DEL PER VEH (MINS)	AVERAGE QUEUE (VEH)	MAIN ROUTE		SITE
	DEMAND FLOW	PCT HEAVY		MAIN ROUTE	'DIVER TED'			WITHOUT WORK ZONE	WITH WORK ZONE	
MID-1 AM	690	0.0	OFF	690	0	0.00	0	70.2	70.2	70.2
1-2 AM	394	0.0	OFF	394	0	0.00	0	70.2	70.2	70.2
2-3 AM	366	0.0	OFF	366	0	0.00	0	70.2	70.2	70.2
3-4 AM	456	0.0	OFF	456	0	0.00	0	70.2	70.2	70.2
4-5 AM	699	0.0	OFF	699	0	0.00	0	70.2	70.2	70.2
5-6 AM	2056	0.0	OFF	2056	0	0.00	0	69.5	69.5	69.5
6-7 AM	3929	0.0	OFF	3929	0	0.00	0	65.3	65.3	65.3
7-8 AM	4479	0.0	OFF	4479	0	0.00	0	61.5	61.5	61.5
8-9 AM	3612	0.0	OFF	3612	0	0.00	0	67.5	67.5	67.5
9-10 AM	2781	0.0	OFF	2781	0	0.00	0	68.6	68.6	68.6
10-11 AM	2936	0.0	3000	2936	0	0.36	0	68.4	48.3	37.9
11AM-NOON	2946	0.0	2999	2946	0	0.37	0	68.4	48.2	37.7
NOON-1PM	3067	0.0	2999	3067	0	0.84	27	68.2	35.0	36.9
1-2 PM	3124	0.0	2999	3124	0	2.29	110	68.2	19.3	36.9
2-3 PM	3666	0.0	3000	3666	0	8.94	498	67.1	10.2	36.9
3-4 PM	3948	0.0	OFF	3948	0	1.88	178	65.2	21.4	21.4
4-5 PM	3744	0.0	OFF	3744	0	0.00	0	66.6	66.6	66.6
5-6 PM	3726	0.0	OFF	3726	0	0.00	0	66.7	66.7	66.7
6-7 PM	2886	0.0	OFF	2886	0	0.00	0	68.4	68.4	68.4
7-8 PM	2375	0.0	OFF	2375	0	0.00	0	69.1	69.1	69.1
8-9 PM	2005	0.0	OFF	2005	0	0.00	0	69.6	69.6	69.6
9-10 PM	1982	0.0	OFF	1982	0	0.00	0	69.6	69.6	69.6
10-11 PM	1513	0.0	OFF	1513	0	0.00	0	70.2	70.2	70.2
11PM-MID	1058	0.0	OFF	1058	0	0.00	0	70.2	70.2	70.2

"OFF" INDICATES NO ROAD WORK (ALL LANES OPEN TO TRAFFIC)

----- SITE BREAKDOWN DELAYS -----	
BREAKDOWN DURATION (MINS)	0
RANGE OF QUEUE DELAY - MIN (VEH-H) MAX	0.0
AV BREAKDOWNS PER DAY	0.00
AV QUEUE DELAY/DAY (VEH-H)	0.0
AV TOTAL DELAY/DAY (VEH-H)	0.0

----- SITE ACCIDENT DELAYS -----	
BREAKDOWN DURATION (MINS)	0
RANGE OF QUEUE DELAY - MIN (VEH-H) MAX	0
AV BREAKDOWNS PER DAY	0
AV QUEUE DELAY/DAY (VEH-H)	0
AV TOTAL DELAY/DAY (VEH-H)	0

AVERAGE ACCIDENT NUMBERS (PIA/DAY)	
MAIN ROUTE WITHOUT WORKS	0.0093
MAIN ROUTE WITH WORKS	0.0076
'DIVERSION'	0.0000
PIA: Personal Injury Accidents	
IMPACTS ON ROAD USERS	
ROAD USER COSTS PER DAY	\$9,426
CONGESTED HOURS PER DAY*	0

*Delays Exceeding User-Specified Maximum

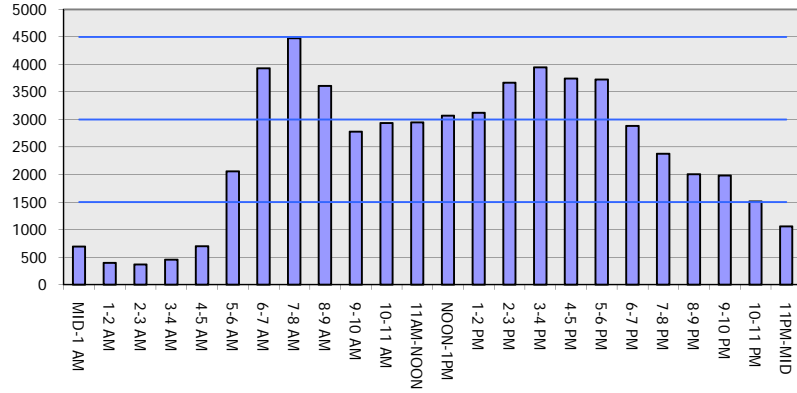
IH 94: CTH ZZ/COLLEGE AVE TO CTH BB/RAWSON AVE (MILWAUKEE COUNTY)
OFF-PEAK DAY CLOSURE
NO DIVERSION ROUTE (MAX QUEUE METHOD)

MAY
 Analyzed for 2009
 Construction Season

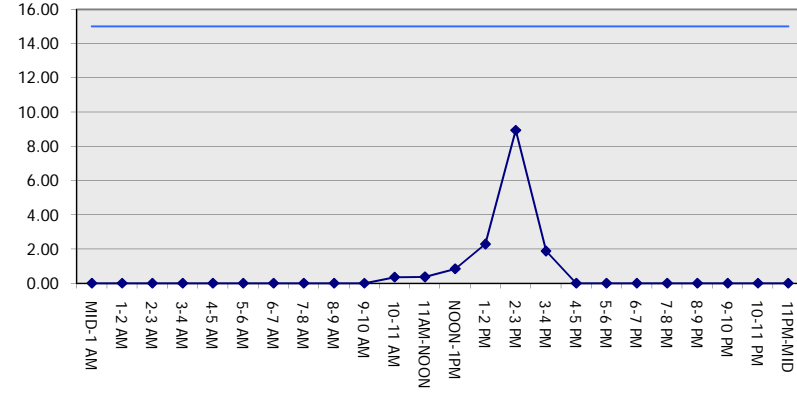
GRAPHICAL REPRESENTATION OF TRAFFIC MODEL INPUT AND OUTPUT

MON-THUR WESTBOUND DIRECTION

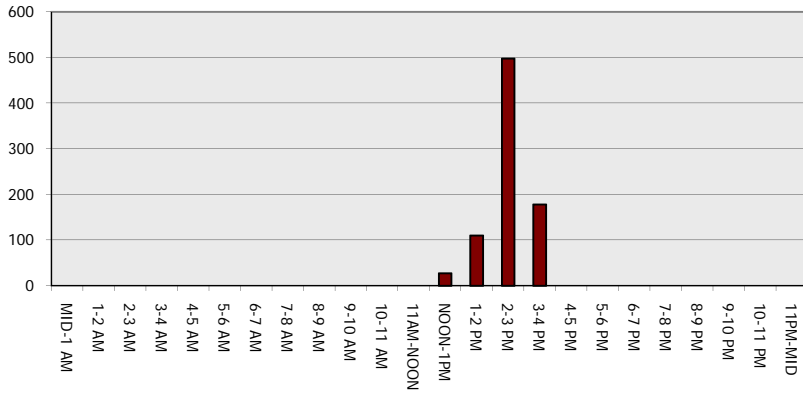
Main Route - Traffic Demand (Vehicles Per Hour)



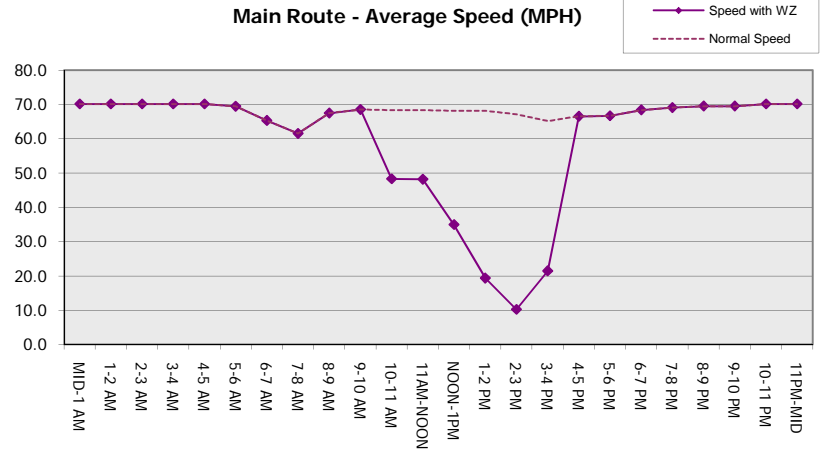
Main Route Average Delay Per Vehicle (Minutes)



Main Route - Average Queue Length (Vehicles)



Main Route - Average Speed (MPH)



IH 94: CTH ZZ/COLLEGE AVE TO CTH BB/RAWSON AVE (MILWAUKEE COUNTY) OFF-PEAK DAY CLOSURE NO DIVERSION ROUTE (MAX QUEUE METHOD)	MAY
	Analyzed for 2009 Construction Season

SUMMARY OF TRAFFIC MODEL OUTPUT

MON-THUR EASTBOUND DIRECTION

TIME OF DAY	FLOWS AND CAPACITY IN VEH/HR							AVERAGE SPEEDS IN MPH		
	MAIN ROUTE		SITE CAPA CITY	FLOW		AV.DEL PER VEH (MINS)	AVERAGE QUEUE (VEH)	MAIN ROUTE		SITE
	DEMAND FLOW	PCT HEAVY		MAIN ROUTE	'DIVER TED'			WITHOUT WORK ZONE	WITH WORK ZONE	
MID-1 AM	603	0.0	OFF	603	0	0.00	0	70.2	70.2	70.2
1-2 AM	417	0.0	OFF	417	0	0.00	0	70.2	70.2	70.2
2-3 AM	420	0.0	OFF	420	0	0.00	0	70.2	70.2	70.2
3-4 AM	541	0.0	OFF	541	0	0.00	0	70.2	70.2	70.2
4-5 AM	1059	0.0	OFF	1059	0	0.00	0	70.2	70.2	70.2
5-6 AM	2420	0.0	OFF	2420	0	0.00	0	69.1	69.1	69.1
6-7 AM	3668	0.0	OFF	3668	0	0.00	0	67.1	67.1	67.1
7-8 AM	3556	0.0	OFF	3556	0	0.00	0	67.6	67.6	67.6
8-9 AM	3206	0.0	OFF	3206	0	0.00	0	68.1	68.1	68.1
9-10 AM	2752	0.0	OFF	2752	0	0.00	0	68.6	68.6	68.6
10-11 AM	2820	0.0	2999	2820	0	0.33	0	68.6	49.9	39.8
11AM-NOON	3039	0.0	2999	3039	0	0.57	12	68.2	41.3	37.0
NOON-1PM	3311	0.0	3000	3311	0	3.55	191	67.9	15.2	36.9
1-2 PM	3473	0.0	3000	3473	0	10.59+	572	67.8	9.5	36.9
2-3 PM	4099	0.0	2999	3091	1008	16.95+	919	64.1	8.2	36.9
3-4 PM	4333	0.0	OFF	4333	0	2.67	256	62.5	16.5	16.5
4-5 PM	4743	0.0	OFF	4743	0	0.00	0	59.7	59.7	59.7
5-6 PM	4916	0.0	OFF	4916	0	0.00	0	58.6	58.6	58.6
6-7 PM	3477	0.0	OFF	3477	0	0.00	0	67.7	67.7	67.7
7-8 PM	2572	0.0	OFF	2572	0	0.00	0	68.9	68.9	68.9
8-9 PM	2228	0.0	OFF	2228	0	0.00	0	69.2	69.2	69.2
9-10 PM	2059	0.0	OFF	2059	0	0.00	0	69.5	69.5	69.5
10-11 PM	1615	0.0	OFF	1615	0	0.00	0	70.0	70.0	70.0
11PM-MID	1035	0.0	OFF	1035	0	0.00	0	70.2	70.2	70.2

"OFF" INDICATES NO ROAD WORK (ALL LANES OPEN TO TRAFFIC)

+ INDICATES QUEUEING EXCEEDS USER-SPECIFIED MAXIMUM LIMIT

BREAKDOWN DURATION (MINS)	0
RANGE OF QUEUE DELAY - MIN (VEH-H) MAX	0.0
AV BREAKDOWNS PER DAY	0.00
AV QUEUE DELAY/DAY (VEH-H)	0.0
AV TOTAL DELAY/DAY (VEH-H)	0.0

BREAKDOWN DURATION (MINS)	0
RANGE OF QUEUE DELAY - MIN (VEH-H) MAX	0
AV BREAKDOWNS PER DAY	0
AV QUEUE DELAY/DAY (VEH-H)	0
AV TOTAL DELAY/DAY (VEH-H)	0

MAIN ROUTE WITHOUT WORKS	0.0099
MAIN ROUTE WITH WORKS	0.0081
'DIVERSION'	0.0004

PIA: Personal Injury Accidents

ROAD USER COSTS PER DAY	\$23,937
CONGESTED HOURS PER DAY*	2

*Delays Exceeding User-Specified Maximum

IH 94: CTH ZZ/COLLEGE AVE TO CTH BB/RAWSON AVE (MILWAUKEE COUNTY)
OFF-PEAK DAY CLOSURE
NO DIVERSION ROUTE (MAX QUEUE METHOD)

MAY
 Analyzed for 2009
 Construction Season

GRAPHICAL REPRESENTATION OF TRAFFIC MODEL INPUT AND OUTPUT
MON-THUR EASTBOUND DIRECTION

