

USH 45: CTH E TO STH 190 (MILWAUKEE COUNTY) OFF-PEAK DAY 2 LANE CLOSURE NO DIVERSION ROUTE (MAX QUEUE METHOD)	OCTOBER
	Analyzed for 2009 Construction Season

SUMMARY OF TRAFFIC MODEL OUTPUT

SATURDAY SOUTHBOUND DIRECTION

TIME OF DAY	FLOWS AND CAPACITY IN VEH/HR						AVERAGE SPEEDS IN MPH				
	MAIN ROUTE		SITE CAPA CITY	FLOW		AV.DEL PER VEH (MINS)	AVERAGE QUEUE (VEH)	MAIN ROUTE		SITE	
	DEMAND FLOW	PCT HEAVY		MAIN ROUTE	'DIVER TED'			WITHOUT WORK ZONE	WITH WORK ZONE		
MID-1 AM	898	0.0	OFF	898	0	0.00	0	69.6	69.6	69.6	
1-2 AM	490	0.0	OFF	490	0	0.00	0	70.1	70.1	70.1	
2-3 AM	478	0.0	OFF	478	0	0.00	0	70.1	70.1	70.1	
3-4 AM	349	0.0	OFF	349	0	0.00	0	70.2	70.2	70.2	
4-5 AM	474	0.0	OFF	474	0	0.00	0	70.2	70.2	70.2	
5-6 AM	904	0.0	OFF	904	0	0.00	0	69.6	69.6	69.6	
6-7 AM	1841	0.0	OFF	1841	0	0.00	0	68.4	68.4	68.4	
7-8 AM	2479	0.0	OFF	2479	0	0.00	0	67.6	67.6	67.6	
8-9 AM	3288	0.0	1499	1578	1710	17.30+	433	66.6	7.3	36.5	
9-10 AM	3453	0.0	1499	1742	1711	15.23+	393	66.4	7.9	35.4	
10-11 AM	4021	0.0	1499	1507	2514	16.95+	422	63.4	7.3	32.9	
11AM-NOON	4624	0.0	1500	1500	3124	16.82+	423	59.2	7.3	32.9	
NOON-1PM	4715	0.0	1500	1500	3215	16.80+	423	58.6	7.3	32.9	
1-2 PM	4375	0.0	1500	1500	2875	16.89+	423	61.0	7.3	32.9	
2-3 PM	4620	0.0	1500	1500	3120	16.82+	423	59.3	7.3	32.9	
3-4 PM	4450	0.0	1500	1500	2950	16.87+	423	60.4	7.3	32.9	
4-5 PM	4703	0.0	1500	1500	3203	16.80+	423	58.7	7.3	32.9	
5-6 PM	4103	0.0	1500	1501	2602	16.95+	423	62.8	7.3	32.9	
6-7 PM	3878	0.0	OFF	3878	0	0.32	25	64.3	54.6	54.6	
7-8 PM	2974	0.0	OFF	2974	0	0.00	0	67.1	67.1	67.1	
8-9 PM	2190	0.0	OFF	2190	0	0.00	0	68.0	68.0	68.0	
9-10 PM	2123	0.0	OFF	2123	0	0.00	0	68.1	68.1	68.1	
10-11 PM	1890	0.0	OFF	1890	0	0.00	0	68.4	68.4	68.4	
11PM-MID	1311	0.0	OFF	1311	0	0.00	0	69.1	69.1	69.1	

"OFF" INDICATES NO ROAD WORK (ALL LANES OPEN TO TRAFFIC)

+ INDICATES QUEUEING EXCEEDS USER-SPECIFIED MAXIMUM LIMIT

----- SITE BREAKDOWN DELAYS -----	
BREAKDOWN DURATION (MINS)	0
RANGE OF QUEUE DELAY - MIN (VEH-H) MAX	0.0
AV BREAKDOWNS PER DAY	0.00
AV QUEUE DELAY/DAY (VEH-H)	0.0
AV TOTAL DELAY/DAY (VEH-H)	0.0

----- SITE ACCIDENT DELAYS -----	
BREAKDOWN DURATION (MINS)	0
RANGE OF QUEUE DELAY - MIN (VEH-H) MAX	0
AV BREAKDOWNS PER DAY	0
AV QUEUE DELAY/DAY (VEH-H)	0
AV TOTAL DELAY/DAY (VEH-H)	0

AVERAGE ACCIDENT NUMBERS (PIA/DAY)	
MAIN ROUTE WITHOUT WORKS	0.0196
MAIN ROUTE WITH WORKS	0.0104
'DIVERSION'	0.0189
PIA: Personal Injury Accidents	
IMPACTS ON ROAD USERS	
ROAD USER COSTS PER DAY	\$194,452
CONGESTED HOURS PER DAY*	10

*Delays Exceeding User-Specified Maximum

**USH 45: CTH E TO STH 190 (MILWAUKEE COUNTY)
OFF-PEAK DAY 2 LANE CLOSURE
NO DIVERSION ROUTE (MAX QUEUE METHOD)**

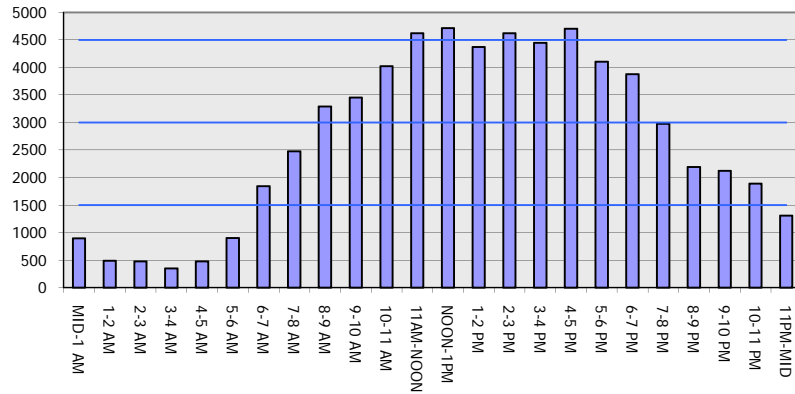
OCTOBER

Analyzed for 2009
Construction Season

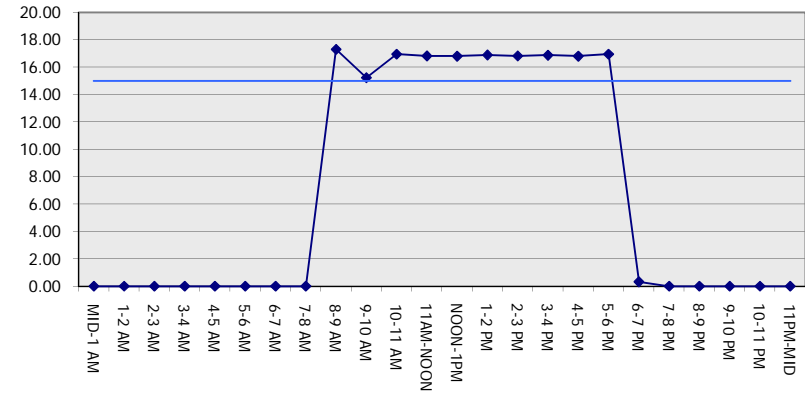
GRAPHICAL REPRESENTATION OF TRAFFIC MODEL INPUT AND OUTPUT

SATURDAY SOUTHBOUND DIRECTION

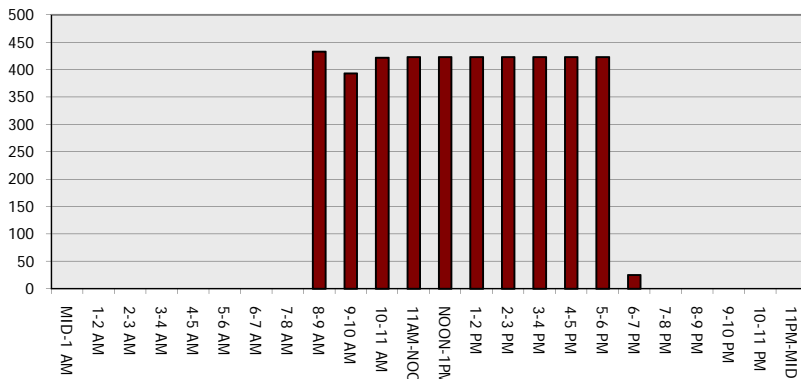
Main Route - Traffic Demand (Vehicles Per Hour)



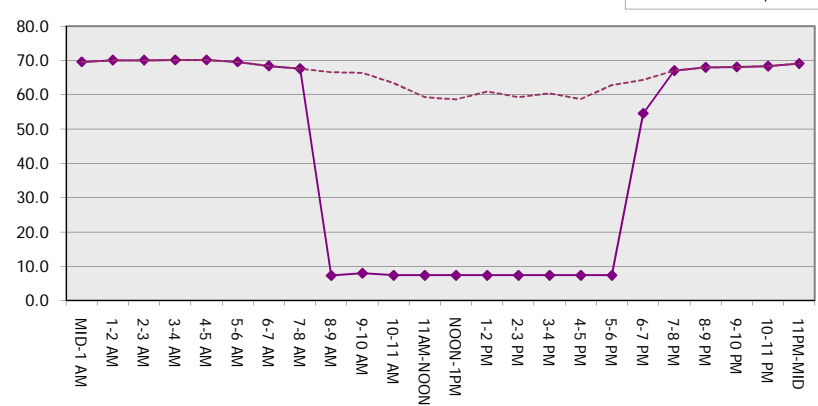
Main Route Average Delay Per Vehicle (Minutes)



Main Route - Average Queue Length (Vehicles)



Main Route - Average Speed (MPH)



USH 45: CTH E TO STH 190 (MILWAUKEE COUNTY) OFF-PEAK DAY 2 LANE CLOSURE NO DIVERSION ROUTE (MAX QUEUE METHOD)	OCTOBER
	Analyzed for 2009 Construction Season

SUMMARY OF TRAFFIC MODEL OUTPUT

SATURDAY NORTHBOUND DIRECTION

TIME OF DAY	FLOWS AND CAPACITY IN VEH/HR							AVERAGE SPEEDS IN MPH		
	MAIN ROUTE		SITE CAPA CITY	FLOW		AV.DEL PER VEH (MINS)	AVERAGE QUEUE (VEH)	MAIN ROUTE		SITE
	DEMAND FLOW	PCT HEAVY		MAIN ROUTE	'DIVER TED'			WITHOUT WORK ZONE	WITH WORK ZONE	
MID-1 AM	1253	0.0	OFF	1253	0	0.00	0	69.2	69.2	69.2
1-2 AM	893	0.0	OFF	893	0	0.00	0	69.6	69.6	69.6
2-3 AM	834	0.0	OFF	834	0	0.00	0	69.7	69.7	69.7
3-4 AM	679	0.0	OFF	679	0	0.00	0	69.9	69.9	69.9
4-5 AM	838	0.0	OFF	838	0	0.00	0	69.7	69.7	69.7
5-6 AM	1355	0.0	OFF	1355	0	0.00	0	69.1	69.1	69.1
6-7 AM	1925	0.0	OFF	1925	0	0.00	0	68.3	68.3	68.3
7-8 AM	2517	0.0	OFF	2517	0	0.00	0	67.6	67.6	67.6
8-9 AM	3112	0.0	1499	1652	1460	15.45+	388	66.9	7.8	36.1
9-10 AM	3818	0.0	1499	1821	1997	16.36+	407	64.8	7.5	30.8
10-11 AM	4250	0.0	1500	1500	2750	17.04+	423	61.8	7.3	30.8
11AM-NOON	4326	0.0	1500	1500	2826	17.03+	423	61.3	7.3	30.8
NOON-1PM	4485	0.0	1500	1500	2985	16.98+	423	60.2	7.3	30.8
1-2 PM	4327	0.0	1500	1500	2827	17.02+	423	61.3	7.3	30.8
2-3 PM	4726	0.0	1500	1500	3226	16.92+	423	58.6	7.3	30.8
3-4 PM	4455	0.0	1500	1500	2955	16.99+	423	60.4	7.3	30.8
4-5 PM	4456	0.0	1500	1500	2956	16.99+	423	60.4	7.3	30.8
5-6 PM	4057	0.0	1500	1500	2557	17.09+	423	63.2	7.3	30.8
6-7 PM	3421	0.0	OFF	3421	0	0.49	43	66.5	51.6	51.6
7-8 PM	3054	0.0	OFF	3054	0	0.00	0	66.9	66.9	66.9
8-9 PM	2466	0.0	OFF	2466	0	0.00	0	67.7	67.7	67.7
9-10 PM	2441	0.0	OFF	2441	0	0.00	0	67.7	67.7	67.7
10-11 PM	2487	0.0	OFF	2487	0	0.00	0	67.6	67.6	67.6
11PM-MID	1883	0.0	OFF	1883	0	0.00	0	68.4	68.4	68.4

"OFF" INDICATES NO ROAD WORK (ALL LANES OPEN TO TRAFFIC)

+ INDICATES QUEUEING EXCEEDS USER-SPECIFIED MAXIMUM LIMIT

----- SITE BREAKDOWN DELAYS -----	
BREAKDOWN DURATION (MINS)	0
RANGE OF QUEUE DELAY - MIN (VEH-H) MAX	0.0
AV BREAKDOWNS PER DAY	0.00
AV QUEUE DELAY/DAY (VEH-H)	0.0
AV TOTAL DELAY/DAY (VEH-H)	0.0

----- SITE ACCIDENT DELAYS -----	
BREAKDOWN DURATION (MINS)	0
RANGE OF QUEUE DELAY - MIN (VEH-H) MAX	0
AV BREAKDOWNS PER DAY	0
AV QUEUE DELAY/DAY (VEH-H)	0
AV TOTAL DELAY/DAY (VEH-H)	0

AVERAGE ACCIDENT NUMBERS (PIA/DAY)	
MAIN ROUTE WITHOUT WORKS	0.0206
MAIN ROUTE WITH WORKS	0.0115
'DIVERSION'	0.0186

PIA: Personal Injury Accidents

ECONOMIC IMPACT ON ROAD USERS	
ROAD USER COSTS PER DAY	\$193,829
CONGESTED HOURS PER DAY*	10

*Delays Exceeding User-Specified Maximum

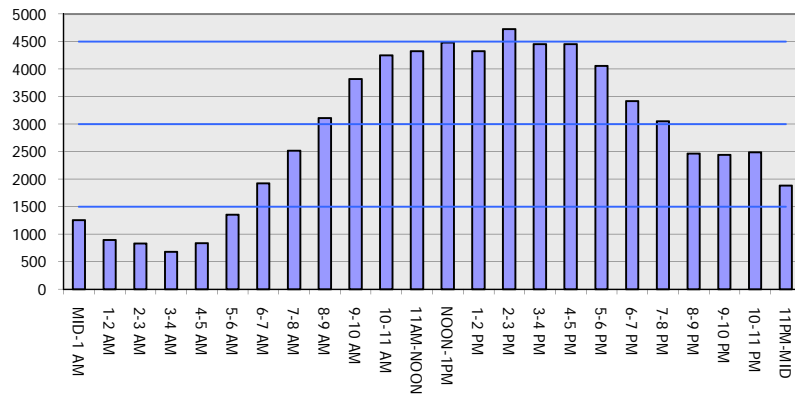
**USH 45: CTH E TO STH 190 (MILWAUKEE COUNTY)
 OFF-PEAK DAY 2 LANE CLOSURE
 NO DIVERSION ROUTE (MAX QUEUE METHOD)**

OCTOBER

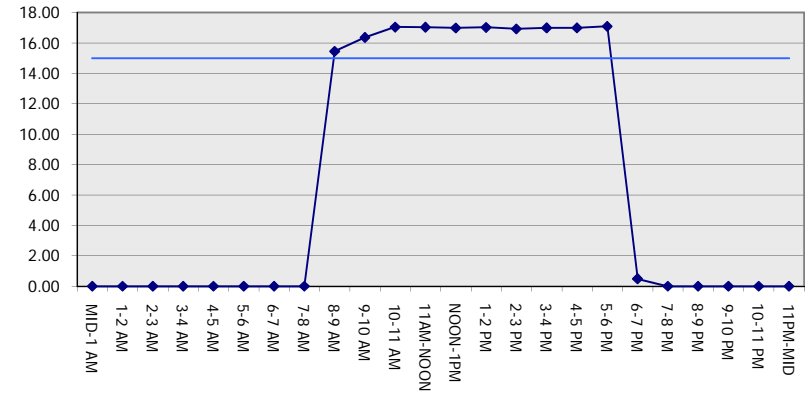
Analyzed for 2009
 Construction Season

GRAPHICAL REPRESENTATION OF TRAFFIC MODEL INPUT AND OUTPUT
SATURDAY NORTHBOUND DIRECTION

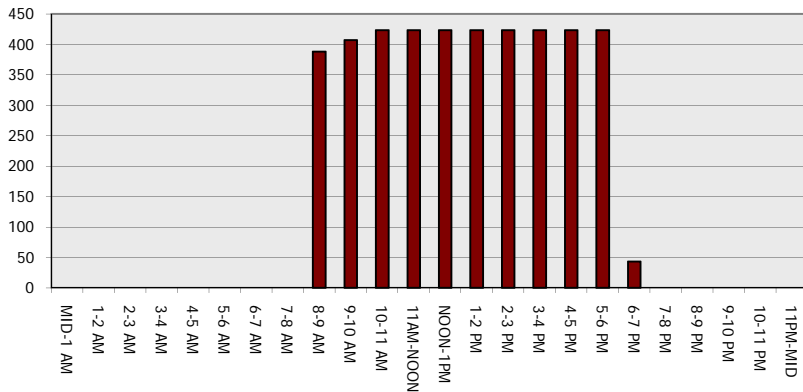
Main Route - Traffic Demand (Vehicles Per Hour)



Main Route Average Delay Per Vehicle (Minutes)



Main Route - Average Queue Length (Vehicles)



Main Route - Average Speed (MPH)

