

<b>USH 45: CTH E TO STH 190 (MILWAUKEE COUNTY)</b> <b>OFF-PEAK DAY 2 LANE CLOSURE</b> <b>NO DIVERSION ROUTE (MAX QUEUE METHOD)</b>	<b>OCTOBER</b>
	Analyzed for 2009 Construction Season

**SUMMARY OF TRAFFIC MODEL OUTPUT**

MON-THUR      SOUTHBOUND DIRECTION

TIME OF DAY	FLOWS AND CAPACITY IN VEH/HR						AVERAGE SPEEDS IN MPH			
	MAIN ROUTE		SITE CAPA CITY	FLOW		AV.DEL PER VEH (MINS)	AVERAGE QUEUE (VEH)	MAIN ROUTE		SITE
	DEMAND FLOW	PCT HEAVY		MAIN ROUTE	'DIVER TED'			WITHOUT WORK ZONE	WITH WORK ZONE	
MID-1 AM	584	0.0	OFF	584	0	0.00	0	70.0	70.0	70.0
1-2 AM	431	0.0	OFF	431	0	0.00	0	70.2	70.2	70.2
2-3 AM	386	0.0	OFF	386	0	0.00	0	70.2	70.2	70.2
3-4 AM	464	0.0	OFF	464	0	0.00	0	70.2	70.2	70.2
4-5 AM	835	0.0	OFF	835	0	0.00	0	69.7	69.7	69.7
5-6 AM	2366	0.0	OFF	2366	0	0.00	0	67.8	67.8	67.8
6-7 AM	5192	0.0	OFF	5192	0	0.00	0	55.4	55.4	55.4
7-8 AM	5750	0.0	OFF	5750	0	0.00	0	51.5	51.5	51.5
8-9 AM	5296	0.0	OFF	5296	0	0.00	0	54.6	54.6	54.6
9-10 AM	4237	0.0	OFF	4237	0	0.00	0	61.9	61.9	61.9
10-11 AM	3993	0.0	1499	1580	2413	17.26+	434	63.6	7.3	36.5
11AM-NOON	4247	0.0	1499	1879	2368	15.62+	402	61.9	7.8	34.5
NOON-1PM	4402	0.0	1499	1500	2902	17.01+	423	60.8	7.3	30.8
1-2 PM	4262	0.0	1500	1500	2762	17.04+	423	61.7	7.3	30.8
2-3 PM	5100	0.0	1500	1500	3600	16.81+	423	56.0	7.3	30.8
3-4 PM	4985	0.0	OFF	4985	0	1.16	103	56.8	36.0	36.0
4-5 PM	4209	0.0	OFF	4209	0	0.00	0	62.1	62.1	62.1
5-6 PM	3921	0.0	OFF	3921	0	0.00	0	64.1	64.1	64.1
6-7 PM	4185	0.0	OFF	4185	0	0.00	0	62.3	62.3	62.3
7-8 PM	2842	0.0	OFF	2842	0	0.00	0	67.2	67.2	67.2
8-9 PM	2212	0.0	OFF	2212	0	0.00	0	68.0	68.0	68.0
9-10 PM	1965	0.0	OFF	1965	0	0.00	0	68.3	68.3	68.3
10-11 PM	1537	0.0	OFF	1537	0	0.00	0	68.8	68.8	68.8
11PM-MID	1238	0.0	OFF	1238	0	0.00	0	69.2	69.2	69.2

"OFF" INDICATES NO ROAD WORK (ALL LANES OPEN TO TRAFFIC)

+ INDICATES QUEUEING EXCEEDS USER-SPECIFIED MAXIMUM LIMIT

*----- SITE BREAKDOWN DELAYS -----*	
BREAKDOWN DURATION (MINS)	0
RANGE OF QUEUE DELAY - MIN (VEH-H) MAX	0.0
AV BREAKDOWNS PER DAY	0.00
AV QUEUE DELAY/DAY (VEH-H)	0.0
AV TOTAL DELAY/DAY (VEH-H)	0.0

*----- SITE ACCIDENT DELAYS -----*	
BREAKDOWN DURATION (MINS)	0
RANGE OF QUEUE DELAY - MIN (VEH-H) MAX	0
AV BREAKDOWNS PER DAY	0
AV QUEUE DELAY/DAY (VEH-H)	0
AV TOTAL DELAY/DAY (VEH-H)	0

AVERAGE ACCIDENT NUMBERS (PIA/DAY)	
MAIN ROUTE WITHOUT WORKS	0.0226
MAIN ROUTE WITH WORKS	0.0178
'DIVERSION'	0.0098
PIA: Personal Injury Accidents	
IMPACTS ON ROAD USERS	
ROAD USER COSTS PER DAY	\$69,873
CONGESTED HOURS PER DAY*	5

\*Delays Exceeding User-Specified Maximum

**USH 45: CTH E TO STH 190 (MILWAUKEE COUNTY)**  
**OFF-PEAK DAY 2 LANE CLOSURE**  
**NO DIVERSION ROUTE (MAX QUEUE METHOD)**

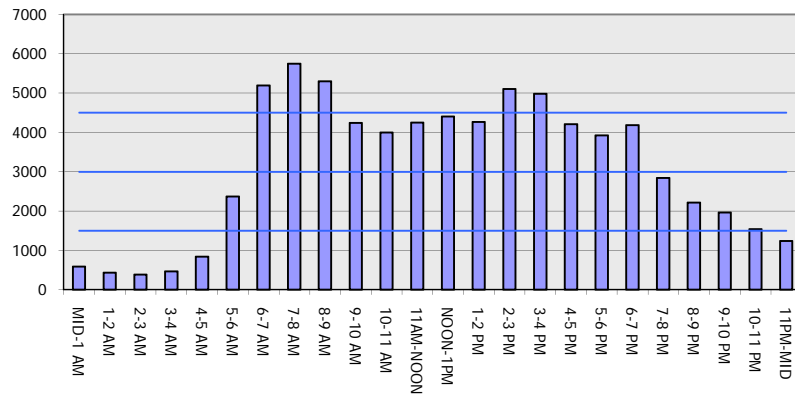
**OCTOBER**

Analyzed for 2009  
 Construction Season

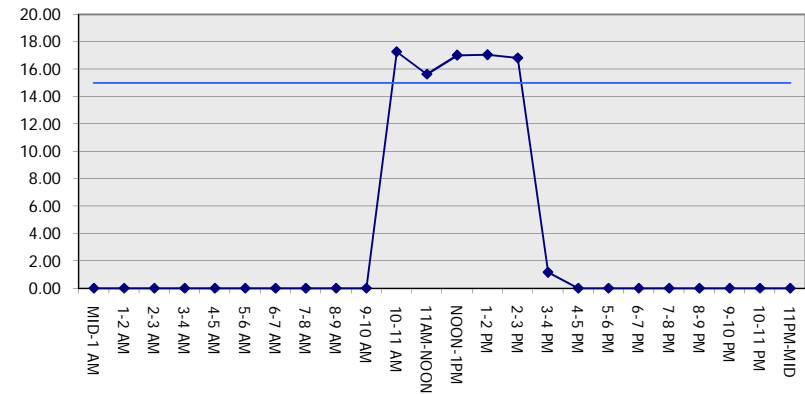
**GRAPHICAL REPRESENTATION OF TRAFFIC MODEL INPUT AND OUTPUT**

**MON-THUR SOUTHBOUND DIRECTION**

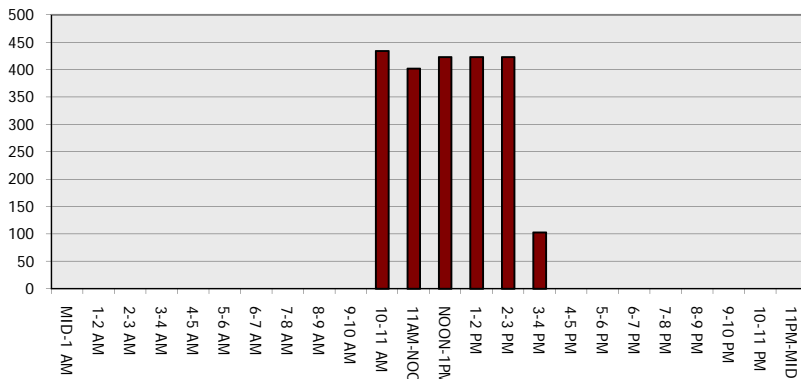
**Main Route - Traffic Demand (Vehicles Per Hour)**



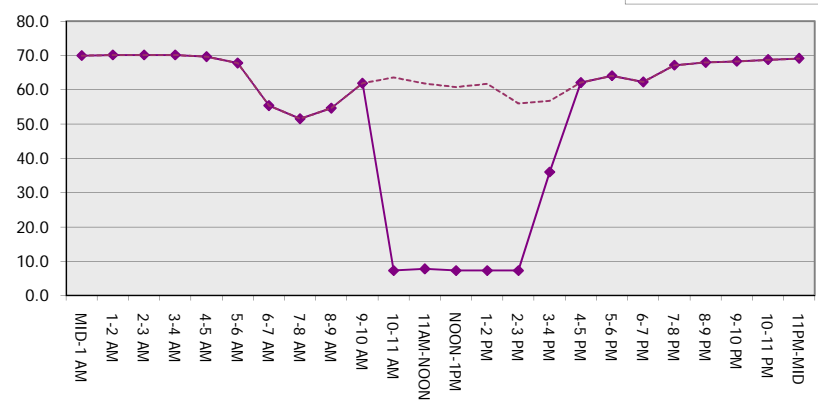
**Main Route Average Delay Per Vehicle (Minutes)**



**Main Route - Average Queue Length (Vehicles)**



**Main Route - Average Speed (MPH)**



<b>USH 45: CTH E TO STH 190 (MILWAUKEE COUNTY)</b> <b>OFF-PEAK DAY 2 LANE CLOSURE</b> <b>NO DIVERSION ROUTE (MAX QUEUE METHOD)</b>	<b>OCTOBER</b>
	Analyzed for 2009 Construction Season

**SUMMARY OF TRAFFIC MODEL OUTPUT**

MON-THUR                      NORTHBOUND DIRECTION

TIME OF DAY	FLOWS AND CAPACITY IN VEH/HR						AVERAGE SPEEDS IN MPH			
	MAIN ROUTE		SITE CAPA CITY	FLOW		AV.DEL PER VEH (MINS)	AVERAGE QUEUE (VEH)	MAIN ROUTE		SITE
	DEMAND FLOW	PCT HEAVY		MAIN ROUTE	'DIVER TED'			WITHOUT WORK ZONE	WITH WORK ZONE	
MID-1 AM	782	0.0	OFF	782	0	0.00	0	69.7	69.7	69.7
1-2 AM	627	0.0	OFF	627	0	0.00	0	69.9	69.9	69.9
2-3 AM	591	0.0	OFF	591	0	0.00	0	70.0	70.0	70.0
3-4 AM	662	0.0	OFF	662	0	0.00	0	69.9	69.9	69.9
4-5 AM	1228	0.0	OFF	1228	0	0.00	0	69.2	69.2	69.2
5-6 AM	3174	0.0	OFF	3174	0	0.00	0	66.8	66.8	66.8
6-7 AM	5320	0.0	OFF	5320	0	0.00	0	54.5	54.5	54.5
7-8 AM	6186	0.0	OFF	6186	0	0.00	0	48.6	48.6	48.6
8-9 AM	5442	0.0	OFF	5442	0	0.00	0	53.7	53.7	53.7
9-10 AM	4225	0.0	OFF	4225	0	0.00	0	62.0	62.0	62.0
10-11 AM	3969	0.0	1499	1580	2390	17.27+	434	63.7	7.3	36.5
11AM-NOON	4174	0.0	1499	1862	2312	15.59+	401	62.3	7.8	34.7
NOON-1PM	4359	0.0	1499	1500	2859	17.02+	423	61.1	7.3	30.8
1-2 PM	4393	0.0	1500	1500	2893	17.01+	423	60.9	7.3	30.8
2-3 PM	5218	0.0	1500	1500	3718	16.77+	423	55.2	7.3	30.8
3-4 PM	5941	0.0	OFF	5941	0	4.14	412	50.3	17.8	17.8
4-5 PM	6383	0.0	OFF	6383	0	5.62	574	47.3	14.2	14.2
5-6 PM	6184	0.0	OFF	6184	0	8.52	858	48.6	10.5	10.5
6-7 PM	4585	0.0	OFF	4585	0	3.42	318	59.6	21.4	21.4
7-8 PM	3151	0.0	OFF	3151	0	0.00	0	66.8	66.8	66.8
8-9 PM	2690	0.0	OFF	2690	0	0.00	0	67.4	67.4	67.4
9-10 PM	2538	0.0	OFF	2538	0	0.00	0	67.6	67.6	67.6
10-11 PM	1948	0.0	OFF	1948	0	0.00	0	68.3	68.3	68.3
11PM-MID	1334	0.0	OFF	1334	0	0.00	0	69.1	69.1	69.1

"OFF" INDICATES NO ROAD WORK (ALL LANES OPEN TO TRAFFIC)

+ INDICATES QUEUEING EXCEEDS USER-SPECIFIED MAXIMUM LIMIT

*----- SITE BREAKDOWN DELAYS -----*	
BREAKDOWN DURATION (MINS)	0
RANGE OF QUEUE DELAY - MIN (VEH-H) MAX	0.0
AV BREAKDOWNS PER DAY	0.00
AV QUEUE DELAY/DAY (VEH-H)	0.0
AV TOTAL DELAY/DAY (VEH-H)	0.0

*----- SITE ACCIDENT DELAYS -----*	
BREAKDOWN DURATION (MINS)	0
RANGE OF QUEUE DELAY - MIN (VEH-H) MAX	0
AV BREAKDOWNS PER DAY	0
AV QUEUE DELAY/DAY (VEH-H)	0
AV TOTAL DELAY/DAY (VEH-H)	0

AVERAGE ACCIDENT NUMBERS (PIA/DAY)	
MAIN ROUTE WITHOUT WORKS	0.0258
MAIN ROUTE WITH WORKS	0.0209
'DIVERSION'	0.0099

PIA: Personal Injury Accidents

ECONOMIC IMPACT ON ROAD USERS	
ROAD USER COSTS PER DAY	\$93,135
CONGESTED HOURS PER DAY*	5

\*Delays Exceeding User-Specified Maximum

**USH 45: CTH E TO STH 190 (MILWAUKEE COUNTY)  
 OFF-PEAK DAY 2 LANE CLOSURE  
 NO DIVERSION ROUTE (MAX QUEUE METHOD)**

**OCTOBER**

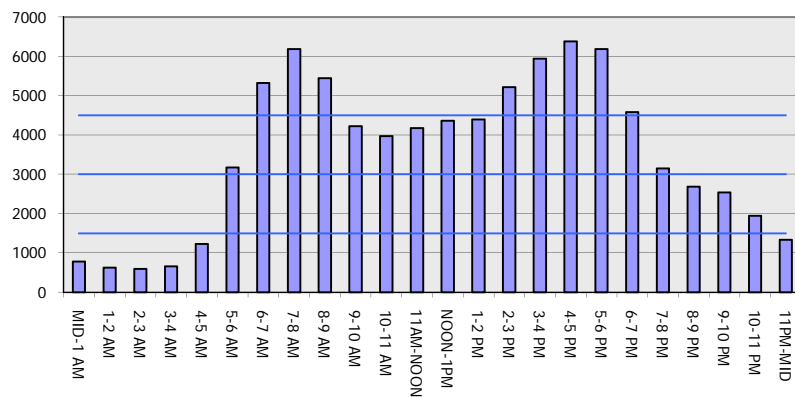
Analyzed for 2009  
 Construction Season

**GRAPHICAL REPRESENTATION OF TRAFFIC MODEL INPUT AND OUTPUT**

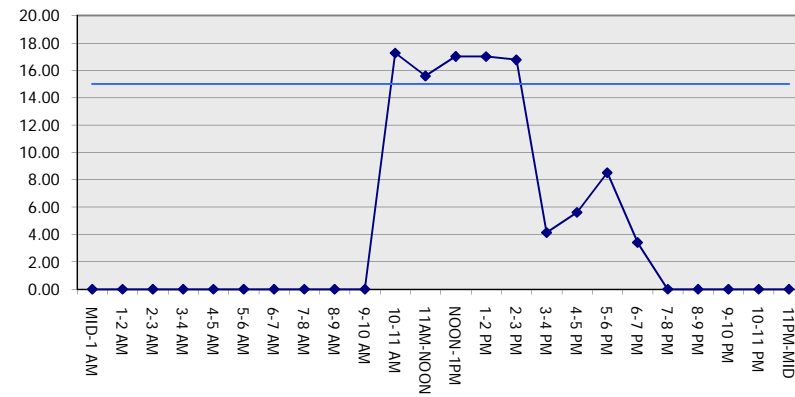
**MON-THUR**

**NORTHBOUND DIRECTION**

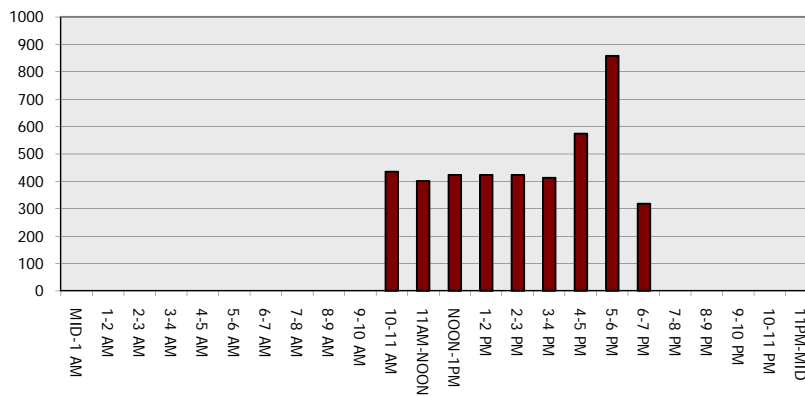
**Main Route - Traffic Demand (Vehicles Per Hour)**



**Main Route Average Delay Per Vehicle (Minutes)**



**Main Route - Average Queue Length (Vehicles)**



**Main Route - Average Speed (MPH)**

