

<b>USH 45: CTH E TO STH 190 (MILWAUKEE COUNTY)</b> <b>OFF-PEAK DAY CLOSURE</b> <b>NO DIVERSION ROUTE (MAX QUEUE METHOD)</b>	<b>OCTOBER</b>
	Analyzed for 2009 Construction Season

**SUMMARY OF TRAFFIC MODEL OUTPUT**

MON-THUR      SOUTHBOUND DIRECTION

TIME OF DAY	FLOWS AND CAPACITY IN VEH/HR						AVERAGE SPEEDS IN MPH			
	MAIN ROUTE		SITE CAPA CITY	FLOW		AV.DEL PER VEH (MINS)	AVERAGE QUEUE (VEH)	MAIN ROUTE		SITE
	DEMAND FLOW	PCT HEAVY		MAIN ROUTE	'DIVER TED'			WITHOUT WORK ZONE	WITH WORK ZONE	
MID-1 AM	584	0.0	OFF	584	0	0.00	0	70.0	70.0	70.0
1-2 AM	431	0.0	OFF	431	0	0.00	0	70.2	70.2	70.2
2-3 AM	386	0.0	OFF	386	0	0.00	0	70.2	70.2	70.2
3-4 AM	464	0.0	OFF	464	0	0.00	0	70.2	70.2	70.2
4-5 AM	835	0.0	OFF	835	0	0.00	0	69.7	69.7	69.7
5-6 AM	2366	0.0	OFF	2366	0	0.00	0	67.8	67.8	67.8
6-7 AM	5192	0.0	OFF	5192	0	0.00	0	55.4	55.4	55.4
7-8 AM	5750	0.0	OFF	5750	0	0.00	0	51.5	51.5	51.5
8-9 AM	5296	0.0	OFF	5296	0	0.00	0	54.6	54.6	54.6
9-10 AM	4237	0.0	OFF	4237	0	0.00	0	61.9	61.9	61.9
10-11 AM	3993	0.0	2999	3993	0	8.44+	496	63.6	13.8	37.3
11AM-NOON	4247	0.0	2999	2934	1314	17.33+	928	61.9	9.9	37.3
NOON-1PM	4402	0.0	3000	3013	1389	17.43+	937	60.8	9.8	37.3
1-2 PM	4262	0.0	3000	2994	1268	17.23+	923	61.7	9.9	37.3
2-3 PM	5100	0.0	2999	3000	2100	17.69+	968	56.0	9.7	37.3
3-4 PM	4985	0.0	OFF	4985	0	4.54	428	56.8	17.4	17.4
4-5 PM	4209	0.0	OFF	4209	0	0.00	0	62.1	62.1	62.1
5-6 PM	3921	0.0	OFF	3921	0	0.00	0	64.1	64.1	64.1
6-7 PM	4185	0.0	OFF	4185	0	0.00	0	62.3	62.3	62.3
7-8 PM	2842	0.0	OFF	2842	0	0.00	0	67.2	67.2	67.2
8-9 PM	2212	0.0	OFF	2212	0	0.00	0	68.0	68.0	68.0
9-10 PM	1965	0.0	OFF	1965	0	0.00	0	68.3	68.3	68.3
10-11 PM	1537	0.0	OFF	1537	0	0.00	0	68.8	68.8	68.8
11PM-MID	1238	0.0	OFF	1238	0	0.00	0	69.2	69.2	69.2

"OFF" INDICATES NO ROAD WORK (ALL LANES OPEN TO TRAFFIC)

+ INDICATES QUEUEING EXCEEDS USER-SPECIFIED MAXIMUM LIMIT

*----- SITE BREAKDOWN DELAYS -----*	
BREAKDOWN DURATION (MINS)	0
RANGE OF QUEUE DELAY - MIN (VEH-H) MAX	0.0
AV BREAKDOWNS PER DAY	0.00
AV QUEUE DELAY/DAY (VEH-H)	0.0
AV TOTAL DELAY/DAY (VEH-H)	0.0

*----- SITE ACCIDENT DELAYS -----*	
BREAKDOWN DURATION (MINS)	0
RANGE OF QUEUE DELAY - MIN (VEH-H) MAX	0
AV BREAKDOWNS PER DAY	0
AV QUEUE DELAY/DAY (VEH-H)	0
AV TOTAL DELAY/DAY (VEH-H)	0

AVERAGE ACCIDENT NUMBERS (PIA/DAY)	
MAIN ROUTE WITHOUT WORKS	0.0226
MAIN ROUTE WITH WORKS	0.0197
'DIVERSION'	0.0043
PIA: Personal Injury Accidents	
IMPACTS ON ROAD USERS	
ROAD USER COSTS PER DAY	\$59,386
CONGESTED HOURS PER DAY*	5

\*Delays Exceeding User-Specified Maximum

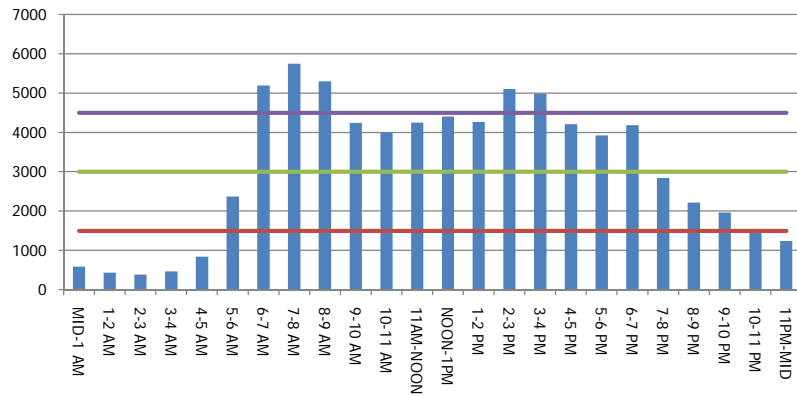
**USH 45: CTH E TO STH 190 (MILWAUKEE COUNTY)  
OFF-PEAK DAY CLOSURE  
NO DIVERSION ROUTE (MAX QUEUE METHOD)**

**OCTOBER**

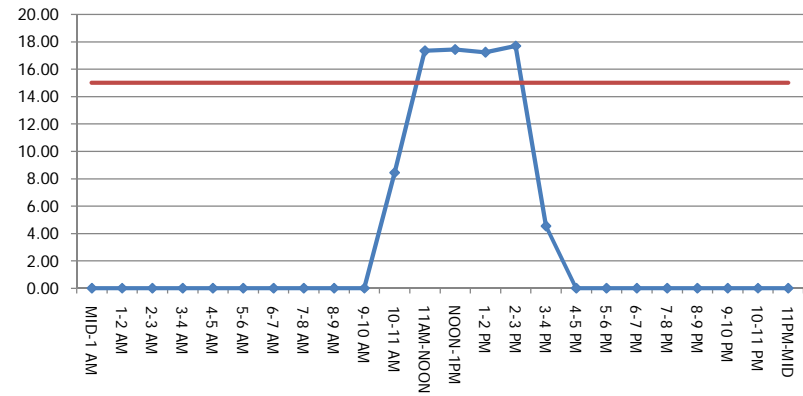
Analyzed for 2009  
Construction Season

**GRAPHICAL REPRESENTATION OF TRAFFIC MODEL INPUT AND OUTPUT**  
**MON-THUR SOUTHBOUND DIRECTION**

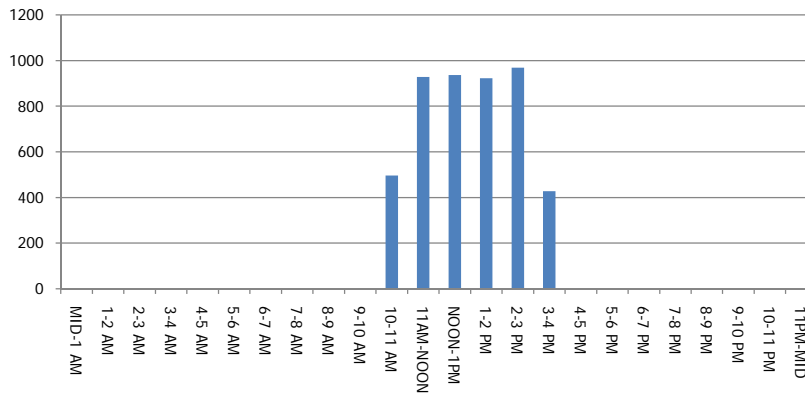
**Main Route - Traffic Demand (Vehicles Per Hour)**



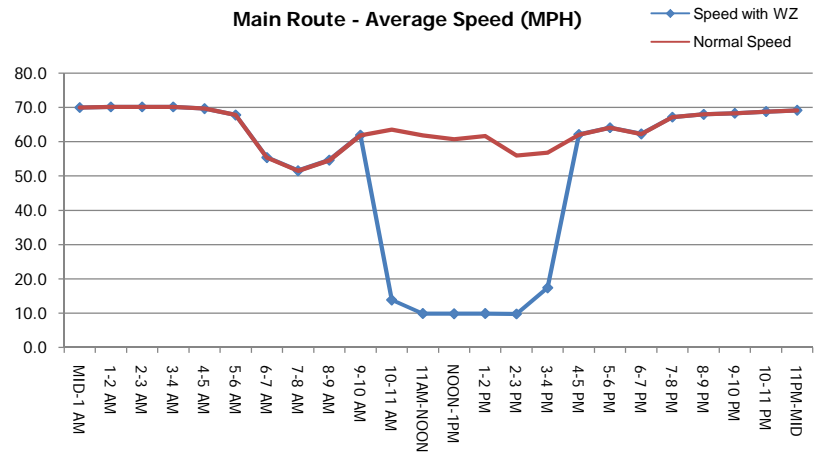
**Main Route Average Delay Per Vehicle (Minutes)**



**Main Route - Average Queue Length (Vehicles)**



**Main Route - Average Speed (MPH)**



<b>USH 45: CTH E TO STH 190 (MILWAUKEE COUNTY)</b> <b>OFF-PEAK DAY CLOSURE</b> <b>NO DIVERSION ROUTE (MAX QUEUE METHOD)</b>	<b>OCTOBER</b>
	Analyzed for 2009 Construction Season

**SUMMARY OF TRAFFIC MODEL OUTPUT**

MON-THUR                      NORTHBOUND DIRECTION

TIME OF DAY	FLOWS AND CAPACITY IN VEH/HR						AVERAGE SPEEDS IN MPH			
	MAIN ROUTE		SITE CAPA CITY	FLOW		AV.DEL PER VEH (MINS)	AVERAGE QUEUE (VEH)	MAIN ROUTE		SITE
	DEMAND FLOW	PCT HEAVY		MAIN ROUTE	'DIVER TED'			WITHOUT WORK ZONE	WITH WORK ZONE	
MID-1 AM	782	0.0	OFF	782	0	0.00	0	69.7	69.7	69.7
1-2 AM	627	0.0	OFF	627	0	0.00	0	69.9	69.9	69.9
2-3 AM	591	0.0	OFF	591	0	0.00	0	70.0	70.0	70.0
3-4 AM	662	0.0	OFF	662	0	0.00	0	69.9	69.9	69.9
4-5 AM	1228	0.0	OFF	1228	0	0.00	0	69.2	69.2	69.2
5-6 AM	3174	0.0	OFF	3174	0	0.00	0	66.8	66.8	66.8
6-7 AM	5320	0.0	OFF	5320	0	0.00	0	54.5	54.5	54.5
7-8 AM	6186	0.0	OFF	6186	0	0.00	0	48.6	48.6	48.6
8-9 AM	5442	0.0	OFF	5442	0	0.00	0	53.7	53.7	53.7
9-10 AM	4225	0.0	OFF	4225	0	0.00	0	62.0	62.0	62.0
10-11 AM	3969	0.0	2999	3969	0	8.30+	486	63.7	14.0	37.3
11AM-NOON	4174	0.0	2999	2949	1226	17.19+	919	62.3	9.9	37.3
NOON-1PM	4359	0.0	3000	3019	1339	17.34+	931	61.1	9.8	37.3
1-2 PM	4393	0.0	3000	3014	1378	17.41+	936	60.9	9.8	37.3
2-3 PM	5218	0.0	2999	3000	2218	17.63+	968	55.2	9.7	37.3
3-4 PM	5941	0.0	OFF	5941	0	9.24	922	50.3	9.9	9.9
4-5 PM	6383	0.0	OFF	6383	0	10.72	1084	47.3	8.7	8.7
5-6 PM	6184	0.0	OFF	6184	0	13.62	1368	48.6	7.1	7.1
6-7 PM	4585	0.0	OFF	4585	0	7.90	752	59.6	11.6	11.6
7-8 PM	3151	0.0	OFF	3151	0	0.00	0	66.8	66.6	66.6
8-9 PM	2690	0.0	OFF	2690	0	0.00	0	67.4	67.4	67.4
9-10 PM	2538	0.0	OFF	2538	0	0.00	0	67.6	67.6	67.6
10-11 PM	1948	0.0	OFF	1948	0	0.00	0	68.3	68.3	68.3
11PM-MID	1334	0.0	OFF	1334	0	0.00	0	69.1	69.1	69.1

"OFF" INDICATES NO ROAD WORK (ALL LANES OPEN TO TRAFFIC)

+ INDICATES QUEUEING EXCEEDS USER-SPECIFIED MAXIMUM LIMIT

*----- SITE BREAKDOWN DELAYS -----*	
BREAKDOWN DURATION (MINS)	0
RANGE OF QUEUE DELAY - MIN (VEH-H) MAX	0.0
AV BREAKDOWNS PER DAY	0.00
AV QUEUE DELAY/DAY (VEH-H)	0.0
AV TOTAL DELAY/DAY (VEH-H)	0.0

*----- SITE ACCIDENT DELAYS -----*	
BREAKDOWN DURATION (MINS)	0
RANGE OF QUEUE DELAY - MIN (VEH-H) MAX	0
AV BREAKDOWNS PER DAY	0
AV QUEUE DELAY/DAY (VEH-H)	0
AV TOTAL DELAY/DAY (VEH-H)	0

AVERAGE ACCIDENT NUMBERS (PIA/DAY)	
MAIN ROUTE WITHOUT WORKS	0.0258
MAIN ROUTE WITH WORKS	0.0228
'DIVERSION'	0.0043

PIA: Personal Injury Accidents

ECONOMIC IMPACT ON ROAD USERS	
ROAD USER COSTS PER DAY	\$95,020
CONGESTED HOURS PER DAY*	5

\*Delays Exceeding User-Specified Maximum

**USH 45: CTH E TO STH 190 (MILWAUKEE COUNTY)  
OFF-PEAK DAY CLOSURE  
NO DIVERSION ROUTE (MAX QUEUE METHOD)**

**OCTOBER**

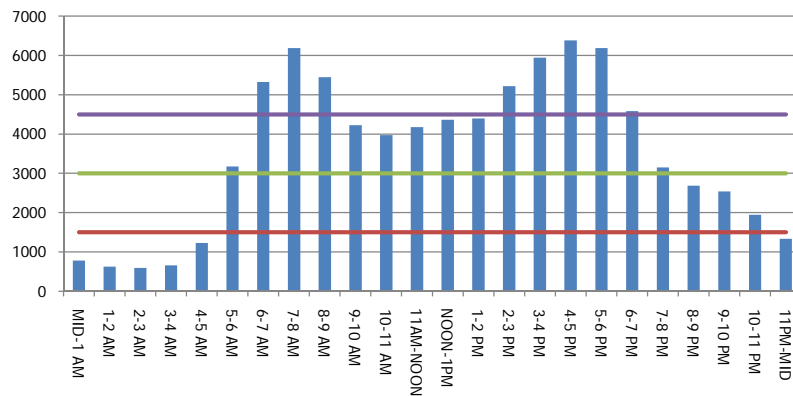
Analyzed for 2009  
Construction Season

**GRAPHICAL REPRESENTATION OF TRAFFIC MODEL INPUT AND OUTPUT**

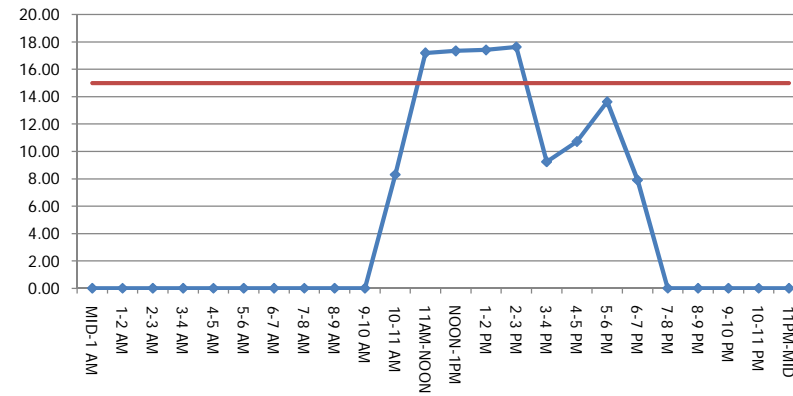
**MON-THUR**

**NORTHBOUND DIRECTION**

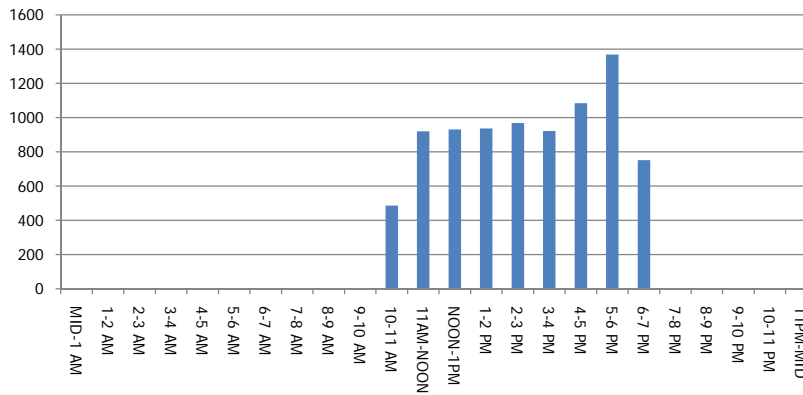
**Main Route - Traffic Demand (Vehicles Per Hour)**



**Main Route Average Delay Per Vehicle (Minutes)**



**Main Route - Average Queue Length (Vehicles)**



**Main Route - Average Speed (MPH)**

