

USH 45: CTH E TO STH 190 (MILWAUKEE COUNTY) OFF-PEAK DAY 2 LANE CLOSURE NO DIVERSION ROUTE (MAX QUEUE METHOD)	AUGUST
	Analyzed for 2009 Construction Season

SUMMARY OF TRAFFIC MODEL OUTPUT

MON-THUR SOUTHBOUND DIRECTION

TIME OF DAY	FLOWS AND CAPACITY IN VEH/HR						AVERAGE SPEEDS IN MPH				
	MAIN ROUTE		SITE CAPA CITY	FLOW		AV.DEL PER VEH (MINS)	AVERAGE QUEUE (VEH)	MAIN ROUTE		SITE	
	DEMAND FLOW	PCT HEAVY		MAIN ROUTE	'DIVER TED'			WITHOUT WORK ZONE	WITH WORK ZONE		
MID-1 AM	632	0.0	OFF	632	0	0.00	0	69.9	69.9	69.9	
1-2 AM	447	0.0	OFF	447	0	0.00	0	70.2	70.2	70.2	
2-3 AM	396	0.0	OFF	396	0	0.00	0	70.2	70.2	70.2	
3-4 AM	471	0.0	OFF	471	0	0.00	0	70.2	70.2	70.2	
4-5 AM	850	0.0	OFF	850	0	0.00	0	69.7	69.7	69.7	
5-6 AM	2448	0.0	OFF	2448	0	0.00	0	67.7	67.7	67.7	
6-7 AM	5083	0.0	OFF	5083	0	0.00	0	56.1	56.1	56.1	
7-8 AM	6048	0.0	OFF	6048	0	0.00	0	49.6	49.6	49.6	
8-9 AM	5419	0.0	OFF	5419	0	0.00	0	53.8	53.8	53.8	
9-10 AM	4639	0.0	OFF	4639	0	0.00	0	59.2	59.2	59.2	
10-11 AM	4359	0.0	1499	1583	2776	17.25+	437	61.1	7.3	36.5	
11AM-NOON	4677	0.0	1499	1989	2688	15.89+	408	58.9	7.6	33.3	
NOON-1PM	4560	0.0	1499	1468	3093	16.71+	421	59.7	7.3	33.9	
1-2 PM	4633	0.0	1499	1494	3140	16.84+	423	59.2	7.3	32.2	
2-3 PM	5162	0.0	1500	1500	3663	16.71+	423	55.6	7.3	32.0	
3-4 PM	4490	0.0	OFF	4490	0	1.06	94	60.2	38.6	38.6	
4-5 PM	4178	0.0	OFF	4178	0	0.00	0	62.3	62.3	62.3	
5-6 PM	4013	0.0	OFF	4013	0	0.00	0	63.5	63.5	63.5	
6-7 PM	4247	0.0	OFF	4247	0	0.00	0	61.9	61.9	61.9	
7-8 PM	3071	0.0	OFF	3071	0	0.00	0	66.9	66.9	66.9	
8-9 PM	2556	0.0	OFF	2556	0	0.00	0	67.6	67.6	67.6	
9-10 PM	2119	0.0	OFF	2119	0	0.00	0	68.1	68.1	68.1	
10-11 PM	1649	0.0	OFF	1649	0	0.00	0	68.7	68.7	68.7	
11PM-MID	1281	0.0	OFF	1281	0	0.00	0	69.1	69.1	69.1	

"OFF" INDICATES NO ROAD WORK (ALL LANES OPEN TO TRAFFIC)

+ INDICATES QUEUEING EXCEEDS USER-SPECIFIED MAXIMUM LIMIT

----- SITE BREAKDOWN DELAYS -----	
BREAKDOWN DURATION (MINS)	0
RANGE OF QUEUE DELAY - MIN (VEH-H) MAX	0.0
AV BREAKDOWNS PER DAY	0.00
AV QUEUE DELAY/DAY (VEH-H)	0.0
AV TOTAL DELAY/DAY (VEH-H)	0.0

----- SITE ACCIDENT DELAYS -----	
BREAKDOWN DURATION (MINS)	0
RANGE OF QUEUE DELAY - MIN (VEH-H) MAX	0
AV BREAKDOWNS PER DAY	0
AV QUEUE DELAY/DAY (VEH-H)	0
AV TOTAL DELAY/DAY (VEH-H)	0

AVERAGE ACCIDENT NUMBERS (PIA/DAY)	
MAIN ROUTE WITHOUT WORKS	0.0234
MAIN ROUTE WITH WORKS	0.0183
'DIVERSION'	0.0108
PIA: Personal Injury Accidents	
IMPACTS ON ROAD USERS	
ROAD USER COSTS PER DAY	\$78,347
CONGESTED HOURS PER DAY*	5

*Delays Exceeding User-Specified Maximum

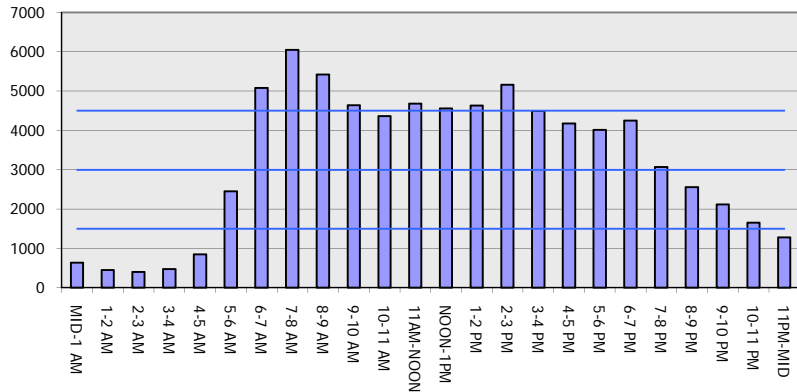
USH 45: CTH E TO STH 190 (MILWAUKEE COUNTY)
OFF-PEAK DAY 2 LANE CLOSURE
NO DIVERSION ROUTE (MAX QUEUE METHOD)

AUGUST
 Analyzed for 2009
 Construction Season

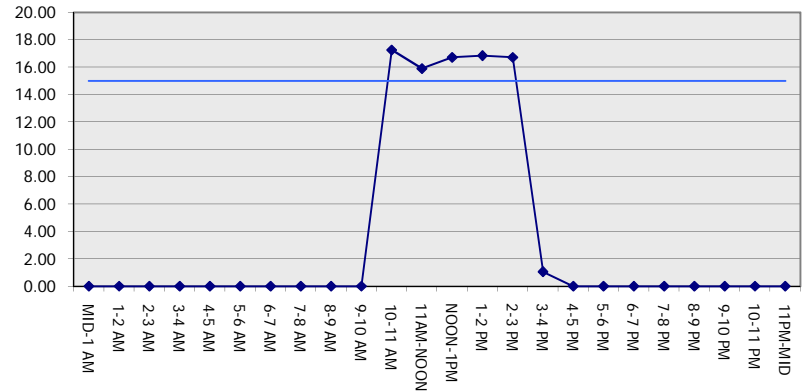
GRAPHICAL REPRESENTATION OF TRAFFIC MODEL INPUT AND OUTPUT

MON-THUR SOUTHBOUND DIRECTION

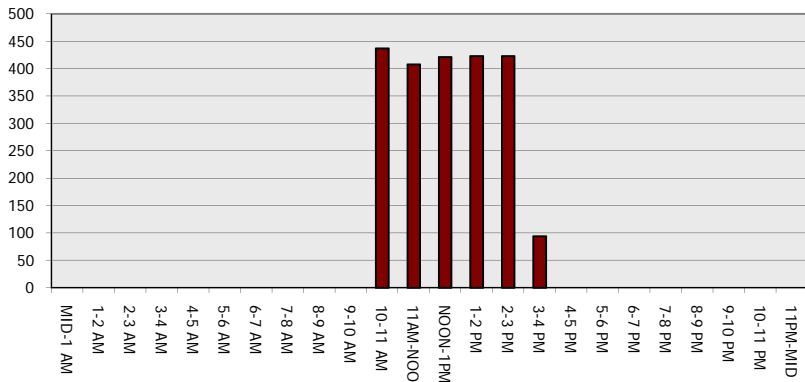
Main Route - Traffic Demand (Vehicles Per Hour)



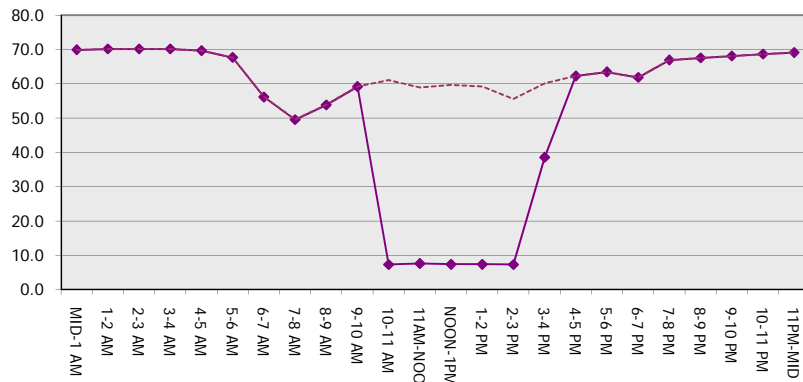
Main Route Average Delay Per Vehicle (Minutes)



Main Route - Average Queue Length (Vehicles)



Main Route - Average Speed (MPH)



USH 45: CTH E TO STH 190 (MILWAUKEE COUNTY) OFF-PEAK DAY 2 LANE CLOSURE NO DIVERSION ROUTE (MAX QUEUE METHOD)	AUGUST
	Analyzed for 2009 Construction Season

SUMMARY OF TRAFFIC MODEL OUTPUT

MON-THUR NORTHBOUND DIRECTION

TIME OF DAY	FLOWS AND CAPACITY IN VEH/HR						AVERAGE SPEEDS IN MPH			
	MAIN ROUTE		SITE CAPA CITY	FLOW		AV.DEL PER VEH (MINS)	AVERAGE QUEUE (VEH)	MAIN ROUTE		SITE
	DEMAND FLOW	PCT HEAVY		MAIN ROUTE	'DIVER TED'			WITHOUT WORK ZONE	WITH WORK ZONE	
MID-1 AM	970	0.0	OFF	970	0	0.00	0	69.6	69.6	69.6
1-2 AM	678	0.0	OFF	678	0	0.00	0	69.9	69.9	69.9
2-3 AM	650	0.0	OFF	650	0	0.00	0	69.9	69.9	69.9
3-4 AM	695	0.0	OFF	695	0	0.00	0	69.9	69.9	69.9
4-5 AM	1287	0.0	OFF	1287	0	0.00	0	69.1	69.1	69.1
5-6 AM	3250	0.0	OFF	3250	0	0.00	0	66.7	66.7	66.7
6-7 AM	5363	0.0	OFF	5363	0	0.00	0	54.2	54.2	54.2
7-8 AM	6317	0.0	OFF	6317	0	0.00	0	47.7	47.7	47.7
8-9 AM	5294	0.0	OFF	5294	0	0.00	0	54.7	54.7	54.7
9-10 AM	4205	0.0	OFF	4205	0	0.00	0	62.1	62.1	62.1
10-11 AM	4121	0.0	1499	1580	2541	17.24+	435	62.7	7.3	36.5
11AM-NOON	4431	0.0	1499	1927	2504	15.72+	404	60.6	7.7	34.1
NOON-1PM	4460	0.0	1499	1500	2960	16.99+	423	60.4	7.3	30.8
1-2 PM	4986	0.0	1500	1500	3486	16.84+	423	56.8	7.3	30.8
2-3 PM	5617	0.0	1500	1500	4117	16.64+	423	52.5	7.3	30.8
3-4 PM	5573	0.0	OFF	5573	0	3.06	293	52.8	21.9	21.9
4-5 PM	6389	0.0	OFF	6389	0	2.61	274	47.2	22.7	22.7
5-6 PM	6265	0.0	OFF	6265	0	5.92	601	48.1	13.7	13.7
6-7 PM	4587	0.0	OFF	4587	0	2.08	190	59.5	28.5	28.5
7-8 PM	3388	0.0	OFF	3388	0	0.00	0	66.5	66.5	66.5
8-9 PM	3005	0.0	OFF	3005	0	0.00	0	67.0	67.0	67.0
9-10 PM	3062	0.0	OFF	3062	0	0.00	0	66.9	66.9	66.9
10-11 PM	2793	0.0	OFF	2793	0	0.00	0	67.3	67.3	67.3
11PM-MID	1653	0.0	OFF	1653	0	0.00	0	68.7	68.7	68.7

"OFF" INDICATES NO ROAD WORK (ALL LANES OPEN TO TRAFFIC)

+ INDICATES QUEUEING EXCEEDS USER-SPECIFIED MAXIMUM LIMIT

----- SITE BREAKDOWN DELAYS -----	
BREAKDOWN DURATION (MINS)	0
RANGE OF QUEUE DELAY - MIN (VEH-H) MAX	0.0
AV BREAKDOWNS PER DAY	0.00
AV QUEUE DELAY/DAY (VEH-H)	0.0
AV TOTAL DELAY/DAY (VEH-H)	0.0

----- SITE ACCIDENT DELAYS -----	
BREAKDOWN DURATION (MINS)	0
RANGE OF QUEUE DELAY - MIN (VEH-H) MAX	0
AV BREAKDOWNS PER DAY	0
AV QUEUE DELAY/DAY (VEH-H)	0
AV TOTAL DELAY/DAY (VEH-H)	0

AVERAGE ACCIDENT NUMBERS (PIA/DAY)	
MAIN ROUTE WITHOUT WORKS	0.0269
MAIN ROUTE WITH WORKS	0.0217
'DIVERSION'	0.0109

PIA: Personal Injury Accidents

ECONOMIC IMPACT ON ROAD USERS	
ROAD USER COSTS PER DAY	\$94,130
CONGESTED HOURS PER DAY*	5

*Delays Exceeding User-Specified Maximum

**USH 45: CTH E TO STH 190 (MILWAUKEE COUNTY)
 OFF-PEAK DAY 2 LANE CLOSURE
 NO DIVERSION ROUTE (MAX QUEUE METHOD)**

AUGUST
 Analyzed for 2009
 Construction Season

GRAPHICAL REPRESENTATION OF TRAFFIC MODEL INPUT AND OUTPUT
MON-THUR NORTHBOUND DIRECTION

