

<b>IH 94: USH 41 AND IH 43 (MILWAUKEE COUNTY)</b> <b>OFF-PEAK DAY 2 LANE CLOSURE</b> <b>NO DIVERSION ROUTE (MAX QUEUE METHOD)</b>	<b>OCTOBER</b>
	Analyzed for 2009 Construction Season

**SUMMARY OF TRAFFIC MODEL OUTPUT**

MON-THUR                      WESTBOUND DIRECTION

TIME OF DAY	FLOWS AND CAPACITY IN VEH/HR						AVERAGE SPEEDS IN MPH			
	MAIN ROUTE		SITE CAPA CITY	FLOW		AV.DEL PER VEH (MINS)	AVERAGE QUEUE (VEH)	MAIN ROUTE		SITE
	DEMAND FLOW	PCT HEAVY		MAIN ROUTE	'DIVER TED'			WITHOUT WORK ZONE	WITH WORK ZONE	
MID-1 AM	614	0.0	OFF	614	0	0.00	0	70.0	70.0	70.0
1-2 AM	380	0.0	OFF	380	0	0.00	0	70.2	70.2	70.2
2-3 AM	301	0.0	OFF	301	0	0.00	0	70.2	70.2	70.2
3-4 AM	273	0.0	OFF	273	0	0.00	0	70.2	70.2	70.2
4-5 AM	514	0.0	OFF	514	0	0.00	0	70.1	70.1	70.1
5-6 AM	1621	0.0	OFF	1621	0	0.00	0	68.7	68.7	68.7
6-7 AM	3837	0.0	OFF	3837	0	0.00	0	64.6	64.6	64.6
7-8 AM	5370	0.0	OFF	5370	0	0.00	0	54.2	54.2	54.2
8-9 AM	4442	0.0	OFF	4442	0	0.00	0	60.5	60.5	60.5
9-10 AM	3360	0.0	OFF	3360	0	0.00	0	66.6	66.6	66.6
10-11 AM	3343	0.0	1499	1570	1773	17.09+	427	66.6	7.6	36.6
11AM-NOON	3889	0.0	1499	1786	2103	15.11+	391	64.3	8.3	35.3
NOON-1PM	3993	0.0	1499	1500	2493	16.86+	417	63.6	7.6	30.8
1-2 PM	3898	0.0	1499	1500	2398	16.88+	417	64.2	7.6	30.8
2-3 PM	4788	0.0	1500	1500	3288	16.64+	417	58.1	7.6	30.8
3-4 PM	5188	0.0	OFF	5188	0	0.89	78	55.4	39.8	39.8
4-5 PM	5097	0.0	OFF	5097	0	0.00	0	56.0	56.0	56.0
5-6 PM	4946	0.0	OFF	4946	0	0.00	0	57.1	57.1	57.1
6-7 PM	4354	0.0	OFF	4354	0	0.00	0	61.1	61.1	61.1
7-8 PM	3018	0.0	OFF	3018	0	0.00	0	67.0	67.0	67.0
8-9 PM	2547	0.0	OFF	2547	0	0.00	0	67.6	67.6	67.6
9-10 PM	2159	0.0	OFF	2159	0	0.00	0	68.1	68.1	68.1
10-11 PM	1524	0.0	OFF	1524	0	0.00	0	68.9	68.9	68.9
11PM-MID	1129	0.0	OFF	1129	0	0.00	0	69.3	69.3	69.3

"OFF" INDICATES NO ROAD WORK (ALL LANES OPEN TO TRAFFIC)

+ INDICATES QUEUEING EXCEEDS USER-SPECIFIED MAXIMUM LIMIT

*----- SITE BREAKDOWN DELAYS -----*	
BREAKDOWN DURATION (MINS)	0
RANGE OF QUEUE DELAY - MIN (VEH-H) MAX	0.0
AV BREAKDOWNS PER DAY	0.00
AV QUEUE DELAY/DAY (VEH-H)	0.0
AV TOTAL DELAY/DAY (VEH-H)	0.0

*----- SITE ACCIDENT DELAYS -----*	
BREAKDOWN DURATION (MINS)	0
RANGE OF QUEUE DELAY - MIN (VEH-H) MAX	0
AV BREAKDOWNS PER DAY	0
AV QUEUE DELAY/DAY (VEH-H)	0
AV TOTAL DELAY/DAY (VEH-H)	0

AVERAGE ACCIDENT NUMBERS (PIA/DAY)	
MAIN ROUTE WITHOUT WORKS	0.0236
MAIN ROUTE WITH WORKS	0.0190
'DIVERSION'	0.0093
PIA: Personal Injury Accidents	
IMPACTS ON ROAD USERS	
ROAD USER COSTS PER DAY	\$72,776
CONGESTED HOURS PER DAY*	5

\*Delays Exceeding User-Specified Maximum

**IH 94: USH 41 AND IH 43 (MILWAUKEE COUNTY)  
OFF-PEAK DAY 2 LANE CLOSURE  
NO DIVERSION ROUTE (MAX QUEUE METHOD)**

**OCTOBER**

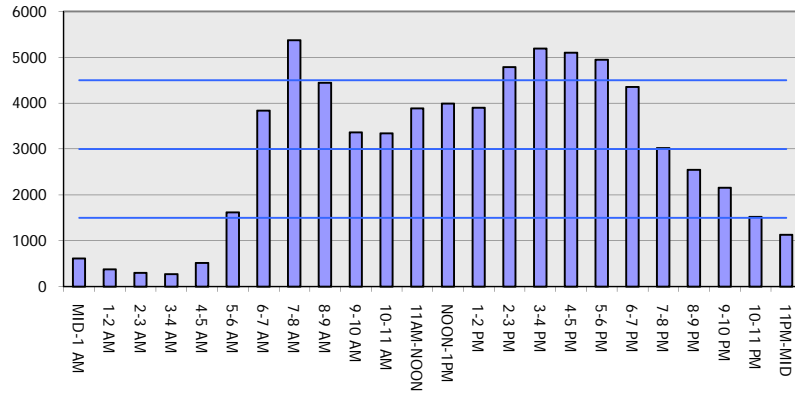
Analyzed for 2009  
Construction Season

**GRAPHICAL REPRESENTATION OF TRAFFIC MODEL INPUT AND OUTPUT**

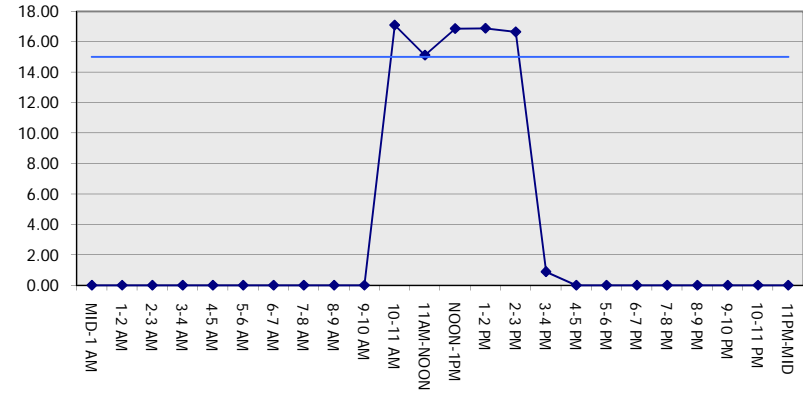
**MON-THUR**

**WESTBOUND DIRECTION**

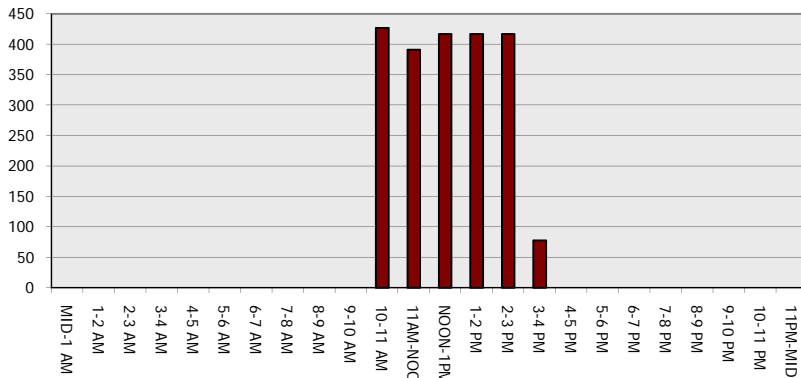
**Main Route - Traffic Demand (Vehicles Per Hour)**



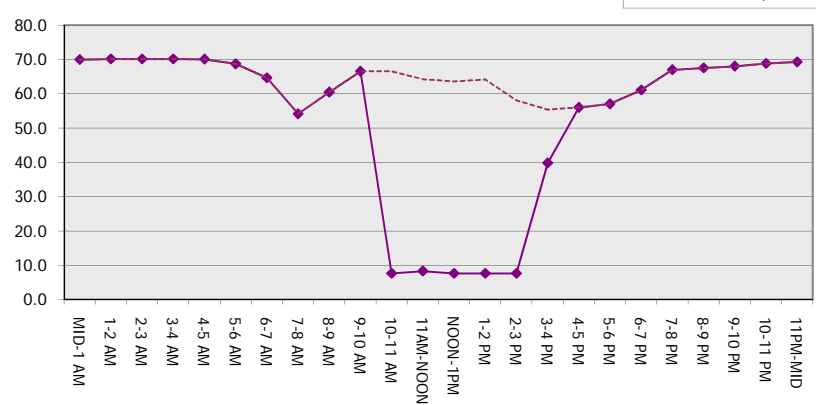
**Main Route Average Delay Per Vehicle (Minutes)**



**Main Route - Average Queue Length (Vehicles)**



**Main Route - Average Speed (MPH)**



<b>IH 94: USH 41 AND IH 43 (MILWAUKEE COUNTY)</b> <b>OFF-PEAK DAY 2 LANE CLOSURE</b> <b>NO DIVERSION ROUTE (MAX QUEUE METHOD)</b>	<b>OCTOBER</b>
	Analyzed for 2009 Construction Season

**SUMMARY OF TRAFFIC MODEL OUTPUT**

MON-THUR                      EASTBOUND DIRECTION

TIME OF DAY	FLOWS AND CAPACITY IN VEH/HR							AVERAGE SPEEDS IN MPH		
	MAIN ROUTE		SITE CAPA CITY	FLOW		AV.DEL PER VEH (MINS)	AVERAGE QUEUE (VEH)	MAIN ROUTE		SITE
	DEMAND FLOW	PCT HEAVY		MAIN ROUTE	'DIVER TED'			WITHOUT WORK ZONE	WITH WORK ZONE	
MID-1 AM	505	0.0	OFF	505	0	0.00	0	70.1	70.1	70.1
1-2 AM	340	0.0	OFF	340	0	0.00	0	70.2	70.2	70.2
2-3 AM	279	0.0	OFF	279	0	0.00	0	70.2	70.2	70.2
3-4 AM	278	0.0	OFF	278	0	0.00	0	70.2	70.2	70.2
4-5 AM	487	0.0	OFF	487	0	0.00	0	70.1	70.1	70.1
5-6 AM	1890	0.0	OFF	1890	0	0.00	0	68.4	68.4	68.4
6-7 AM	4133	0.0	OFF	4133	0	0.00	0	62.6	62.6	62.6
7-8 AM	4431	0.0	OFF	4431	0	0.00	0	60.6	60.6	60.6
8-9 AM	4282	0.0	OFF	4282	0	0.00	0	61.6	61.6	61.6
9-10 AM	3588	0.0	OFF	3588	0	0.00	0	66.3	66.3	66.3
10-11 AM	3215	0.0	1499	1570	1644	17.09+	427	66.8	7.6	36.6
11AM-NOON	3354	0.0	1499	1704	1649	14.94+	389	66.6	8.4	35.5
NOON-1PM	3422	0.0	1499	1526	1895	16.66+	414	66.5	7.7	34.5
1-2 PM	3166	0.0	1500	1526	1641	16.76+	414	66.8	7.6	32.7
2-3 PM	2903	0.0	1500	1526	1377	16.85+	414	67.1	7.6	31.1
3-4 PM	3689	0.0	OFF	3689	0	0.34	26	65.6	55.7	55.7
4-5 PM	3986	0.0	OFF	3986	0	0.00	0	63.7	63.7	63.7
5-6 PM	4086	0.0	OFF	4086	0	0.00	0	63.0	63.0	63.0
6-7 PM	3702	0.0	OFF	3702	0	0.00	0	65.6	65.6	65.6
7-8 PM	2713	0.0	OFF	2713	0	0.00	0	67.4	67.4	67.4
8-9 PM	2231	0.0	OFF	2231	0	0.00	0	67.9	67.9	67.9
9-10 PM	2152	0.0	OFF	2152	0	0.00	0	68.1	68.1	68.1
10-11 PM	1508	0.0	OFF	1508	0	0.00	0	68.9	68.9	68.9
11PM-MID	975	0.0	OFF	975	0	0.00	0	69.5	69.5	69.5

"OFF" INDICATES NO ROAD WORK (ALL LANES OPEN TO TRAFFIC)

+ INDICATES QUEUEING EXCEEDS USER-SPECIFIED MAXIMUM LIMIT

*----- SITE BREAKDOWN DELAYS -----*	
BREAKDOWN DURATION (MINS)	0
RANGE OF QUEUE DELAY - MIN (VEH-H) MAX	0.0
AV BREAKDOWNS PER DAY	0.00
AV QUEUE DELAY/DAY (VEH-H)	0.0
AV TOTAL DELAY/DAY (VEH-H)	0.0

*----- SITE ACCIDENT DELAYS -----*	
BREAKDOWN DURATION (MINS)	0
RANGE OF QUEUE DELAY - MIN (VEH-H) MAX	0
AV BREAKDOWNS PER DAY	0
AV QUEUE DELAY/DAY (VEH-H)	0
AV TOTAL DELAY/DAY (VEH-H)	0

AVERAGE ACCIDENT NUMBERS (PIA/DAY)	
MAIN ROUTE WITHOUT WORKS	0.0205
MAIN ROUTE WITH WORKS	0.0172
'DIVERSION'	0.0064

PIA: Personal Injury Accidents

ECONOMIC IMPACT ON ROAD USERS	
ROAD USER COSTS PER DAY	\$57,926
CONGESTED HOURS PER DAY*	5

\*Delays Exceeding User-Specified Maximum

**IH 94: USH 41 AND IH 43 (MILWAUKEE COUNTY)  
OFF-PEAK DAY 2 LANE CLOSURE  
NO DIVERSION ROUTE (MAX QUEUE METHOD)**

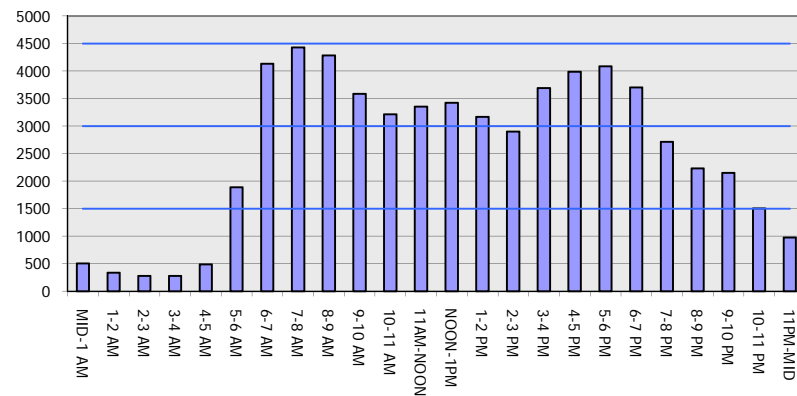
**OCTOBER**

Analyzed for 2009  
Construction Season

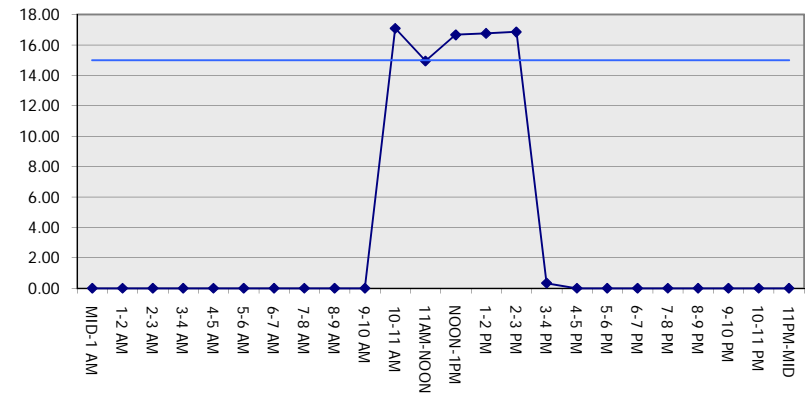
**GRAPHICAL REPRESENTATION OF TRAFFIC MODEL INPUT AND OUTPUT**

**MON-THUR EASTBOUND DIRECTION**

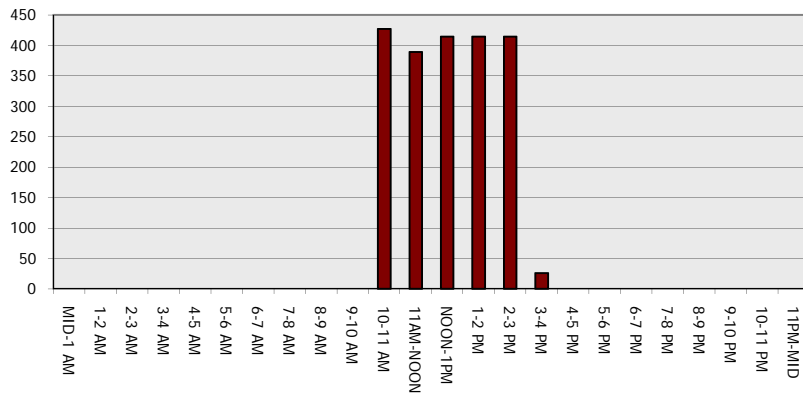
**Main Route - Traffic Demand (Vehicles Per Hour)**



**Main Route Average Delay Per Vehicle (Minutes)**



**Main Route - Average Queue Length (Vehicles)**



**Main Route - Average Speed (MPH)**

