

<b>IH 94: USH 41 AND IH 43 (MILWAUKEE COUNTY)                  OFF-PEAK DAY CLOSURE                  NO DIVERSION ROUTE (MAX QUEUE METHOD)</b>	<b>AUGUST</b>
	Analyzed for 2009 Construction Season

**SUMMARY OF TRAFFIC MODEL OUTPUT**

MON-THUR                  WESTBOUND DIRECTION

TIME OF DAY	FLOWS AND CAPACITY IN VEH/HR						AVERAGE SPEEDS IN MPH			
	MAIN ROUTE		SITE CAPA CITY	FLOW		AV.DEL PER VEH (MINS)	AVERAGE QUEUE (VEH)	MAIN ROUTE		SITE
	DEMAND FLOW	PCT HEAVY		MAIN ROUTE	'DIVER TED'			WITHOUT WORK ZONE	WITH WORK ZONE	
MID-1 AM	909	0.0	OFF	909	0	0.00	0	69.6	69.6	69.6
1-2 AM	634	0.0	OFF	634	0	0.00	0	69.9	69.9	69.9
2-3 AM	480	0.0	OFF	480	0	0.00	0	70.1	70.1	70.1
3-4 AM	423	0.0	OFF	423	0	0.00	0	70.2	70.2	70.2
4-5 AM	750	0.0	OFF	750	0	0.00	0	69.8	69.8	69.8
5-6 AM	2083	0.0	OFF	2083	0	0.00	0	68.1	68.1	68.1
6-7 AM	4309	0.0	OFF	4309	0	0.00	0	61.4	61.4	61.4
7-8 AM	5349	0.0	OFF	5349	0	0.00	0	54.3	54.3	54.3
8-9 AM	4711	0.0	OFF	4711	0	0.00	0	58.7	58.7	58.7
9-10 AM	4031	0.0	OFF	4031	0	0.00	0	63.3	63.3	63.3
10-11 AM	4097	0.0	2999	4062	35	8.74+	523	62.8	14.1	37.3
11AM-NOON	4654	0.0	2999	2880	1774	17.45+	944	59.1	10.0	37.3
NOON-1PM	4699	0.0	3000	3003	1697	17.58+	953	58.7	10.0	37.3
1-2 PM	4778	0.0	3000	3000	1777	17.55+	953	58.2	10.0	37.3
2-3 PM	5437	0.0	3000	3000	2437	17.25+	953	53.7	10.0	37.3
3-4 PM	5186	0.0	OFF	5186	0	5.63	538	55.5	16.0	16.0
4-5 PM	5290	0.0	OFF	5290	0	0.16	12	54.7	51.2	51.2
5-6 PM	5228	0.0	OFF	5228	0	0.00	0	55.1	55.1	55.1
6-7 PM	4855	0.0	OFF	4855	0	0.00	0	57.7	57.7	57.7
7-8 PM	3199	0.0	OFF	3199	0	0.00	0	66.8	66.8	66.8
8-9 PM	2688	0.0	OFF	2688	0	0.00	0	67.4	67.4	67.4
9-10 PM	2580	0.0	OFF	2580	0	0.00	0	67.5	67.5	67.5
10-11 PM	1948	0.0	OFF	1948	0	0.00	0	68.3	68.3	68.3
11PM-MID	1442	0.0	OFF	1442	0	0.00	0	68.9	68.9	68.9

"OFF" INDICATES NO ROAD WORK (ALL LANES OPEN TO TRAFFIC)

+ INDICATES QUEUEING EXCEEDS USER-SPECIFIED MAXIMUM LIMIT

*----- SITE BREAKDOWN DELAYS -----*	
BREAKDOWN DURATION (MINS)	0
RANGE OF QUEUE DELAY - MIN	0.0
(VEH-H) MAX	0.0
AV BREAKDOWNS PER DAY	0.00
AV QUEUE DELAY/DAY (VEH-H)	0.0
AV TOTAL DELAY/DAY (VEH-H)	0.0

*----- SITE ACCIDENT DELAYS -----*	
BREAKDOWN DURATION (MINS)	0
RANGE OF QUEUE DELAY - MIN	0
(VEH-H) MAX	0
AV BREAKDOWNS PER DAY	0
AV QUEUE DELAY/DAY (VEH-H)	0
AV TOTAL DELAY/DAY (VEH-H)	0

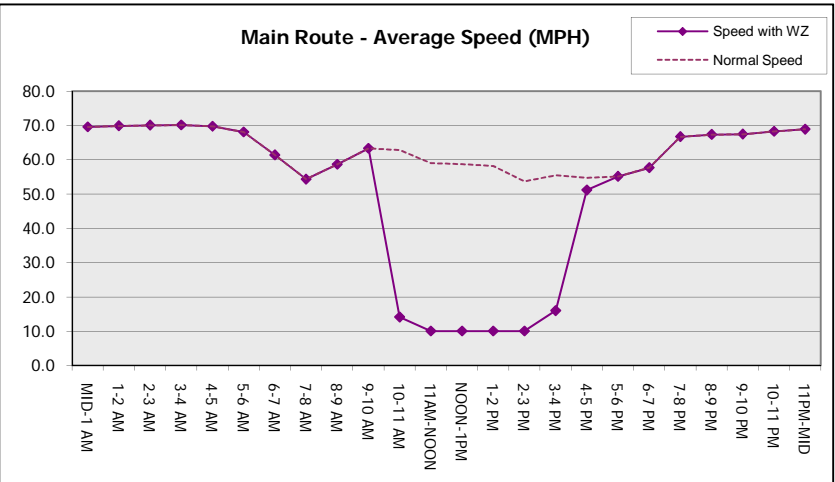
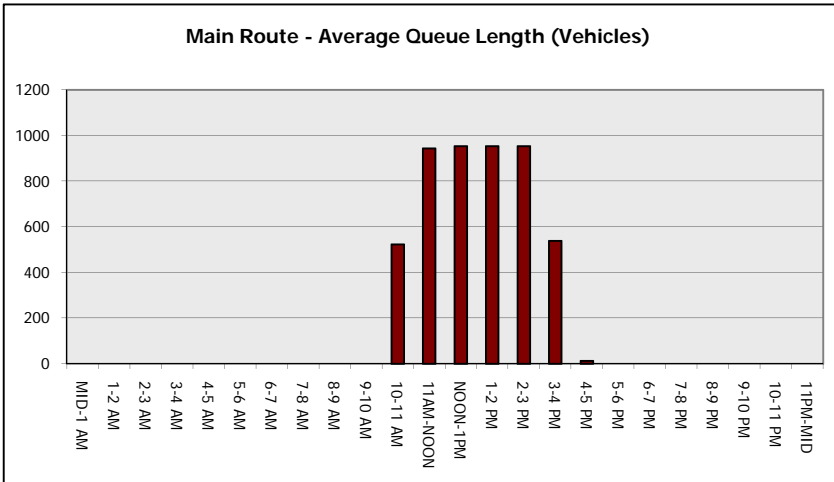
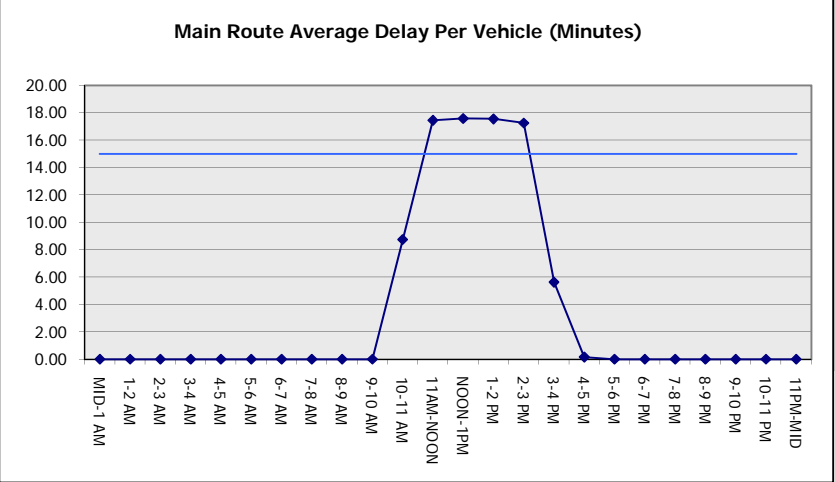
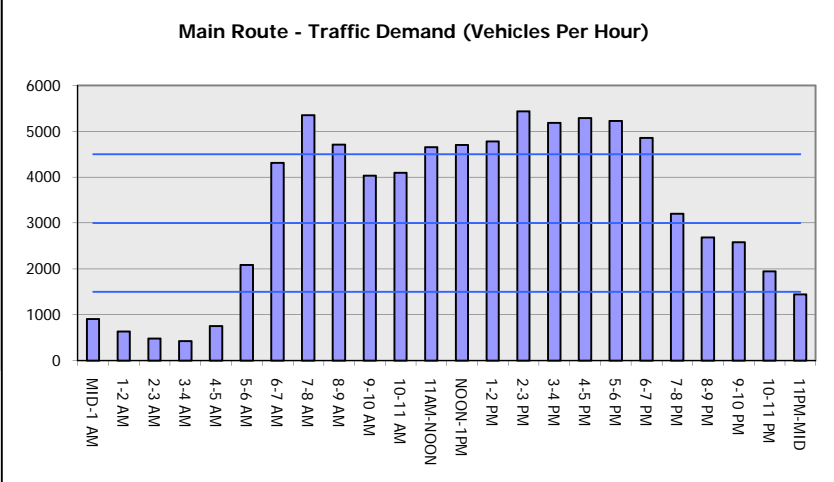
AVERAGE ACCIDENT NUMBERS (PIA/DAY)	
MAIN ROUTE WITHOUT WORKS	0.0267
MAIN ROUTE WITH WORKS	0.0230
'DIVERSION'	0.0060
PIA: Personal Injury Accidents	
IMPACTS ON ROAD USERS	
ROAD USER COSTS PER DAY	\$84,446
CONGESTED HOURS PER DAY*	5

\*Delays Exceeding User-Specified Maximum

**IH 94: USH 41 AND IH 43 (MILWAUKEE COUNTY)  
OFF-PEAK DAY CLOSURE  
NO DIVERSION ROUTE (MAX QUEUE METHOD)**

**AUGUST**  
Analyzed for 2009  
Construction Season

**GRAPHICAL REPRESENTATION OF TRAFFIC MODEL INPUT AND OUTPUT**  
**MON-THUR WESTBOUND DIRECTION**



<b>IH 94: USH 41 AND IH 43 (MILWAUKEE COUNTY)</b> <b>OFF-PEAK DAY CLOSURE</b> <b>NO DIVERSION ROUTE (MAX QUEUE METHOD)</b>	<b>AUGUST</b>
	Analyzed for 2009 Construction Season

**SUMMARY OF TRAFFIC MODEL OUTPUT**

MON-THUR                      EASTBOUND DIRECTION

TIME OF DAY	FLOWS AND CAPACITY IN VEH/HR						AVERAGE SPEEDS IN MPH			
	MAIN ROUTE		SITE CAPA CITY	FLOW		AV.DEL PER VEH (MINS)	AVERAGE QUEUE (VEH)	MAIN ROUTE		SITE
	DEMAND FLOW	PCT HEAVY		MAIN ROUTE	'DIVER TED'			WITHOUT WORK ZONE	WITH WORK ZONE	
MID-1 AM	675	0.0	OFF	675	0	0.00	0	69.9	69.9	69.9
1-2 AM	388	0.0	OFF	388	0	0.00	0	70.2	70.2	70.2
2-3 AM	300	0.0	OFF	300	0	0.00	0	70.2	70.2	70.2
3-4 AM	328	0.0	OFF	328	0	0.00	0	70.2	70.2	70.2
4-5 AM	582	0.0	OFF	582	0	0.00	0	70.0	70.0	70.0
5-6 AM	2080	0.0	OFF	2080	0	0.00	0	68.1	68.1	68.1
6-7 AM	4187	0.0	OFF	4187	0	0.00	0	62.2	62.2	62.2
7-8 AM	4506	0.0	OFF	4506	0	0.00	0	60.1	60.1	60.1
8-9 AM	4356	0.0	OFF	4356	0	0.00	0	61.1	61.1	61.1
9-10 AM	3648	0.0	OFF	3648	0	0.00	0	66.0	66.0	66.0
10-11 AM	3278	0.0	2999	3278	0	3.03	144	66.6	25.6	37.3
11AM-NOON	3471	0.0	3000	3471	0	9.71	511	66.4	13.0	37.3
NOON-1PM	3341	0.0	2999	3160	181	16.31+	860	66.6	10.4	37.3
1-2 PM	3505	0.0	2999	2991	514	16.84+	889	66.4	10.2	37.3
2-3 PM	3741	0.0	2999	2996	745	16.83+	891	65.3	10.2	37.3
3-4 PM	3650	0.0	OFF	3650	0	1.90	170	66.0	33.0	33.0
4-5 PM	4043	0.0	OFF	4043	0	0.00	0	63.2	63.2	63.2
5-6 PM	4113	0.0	OFF	4113	0	0.00	0	62.8	62.8	62.8
6-7 PM	3430	0.0	OFF	3430	0	0.00	0	66.4	66.4	66.4
7-8 PM	2794	0.0	OFF	2794	0	0.00	0	67.3	67.3	67.3
8-9 PM	2164	0.0	OFF	2164	0	0.00	0	68.1	68.1	68.1
9-10 PM	2361	0.0	OFF	2361	0	0.00	0	67.8	67.8	67.8
10-11 PM	1752	0.0	OFF	1752	0	0.00	0	68.6	68.6	68.6
11PM-MID	1096	0.0	OFF	1096	0	0.00	0	69.4	69.4	69.4

"OFF" INDICATES NO ROAD WORK (ALL LANES OPEN TO TRAFFIC)

+ INDICATES QUEUEING EXCEEDS USER-SPECIFIED MAXIMUM LIMIT

*----- SITE BREAKDOWN DELAYS -----*	
BREAKDOWN DURATION (MINS)	0
RANGE OF QUEUE DELAY - MIN (VEH-H) MAX	0.0
AV BREAKDOWNS PER DAY	0.00
AV QUEUE DELAY/DAY (VEH-H)	0.0
AV TOTAL DELAY/DAY (VEH-H)	0.0

*----- SITE ACCIDENT DELAYS -----*	
BREAKDOWN DURATION (MINS)	0
RANGE OF QUEUE DELAY - MIN (VEH-H) MAX	0
AV BREAKDOWNS PER DAY	0
AV QUEUE DELAY/DAY (VEH-H)	0
AV TOTAL DELAY/DAY (VEH-H)	0

AVERAGE ACCIDENT NUMBERS (PIA/DAY)	
MAIN ROUTE WITHOUT WORKS	0.0213
MAIN ROUTE WITH WORKS	0.0198
'DIVERSION'	0.0011

PIA: Personal Injury Accidents

ECONOMIC IMPACT ON ROAD USERS	
ROAD USER COSTS PER DAY	\$47,072
CONGESTED HOURS PER DAY*	3

\*Delays Exceeding User-Specified Maximum

**IH 94: USH 41 AND IH 43 (MILWAUKEE COUNTY)  
OFF-PEAK DAY CLOSURE  
NO DIVERSION ROUTE (MAX QUEUE METHOD)**

**AUGUST**

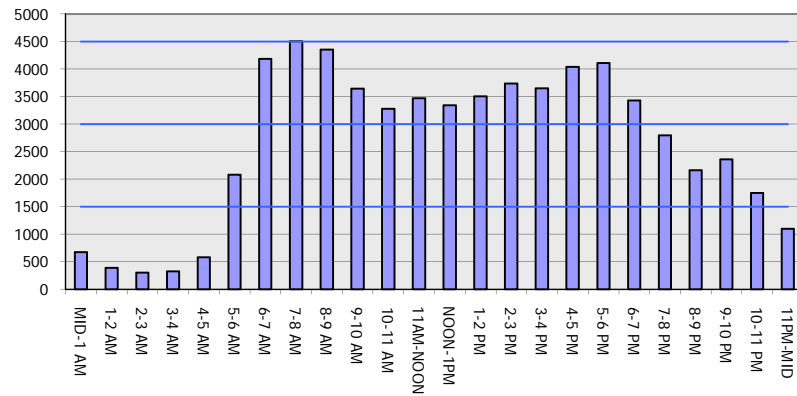
Analyzed for 2009  
Construction Season

**GRAPHICAL REPRESENTATION OF TRAFFIC MODEL INPUT AND OUTPUT**

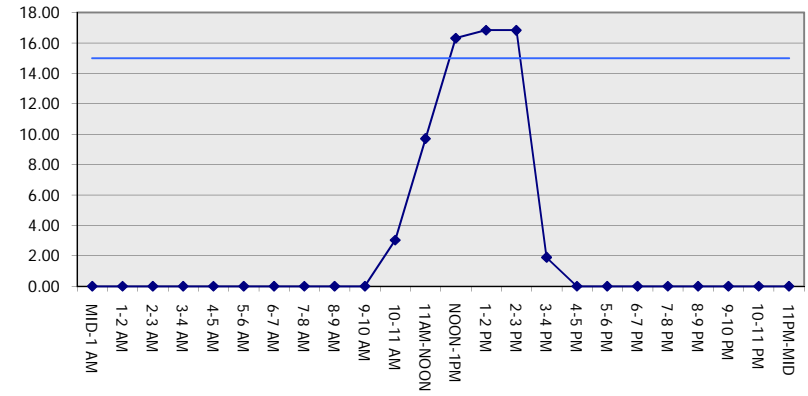
**MON-THUR**

**EASTBOUND DIRECTION**

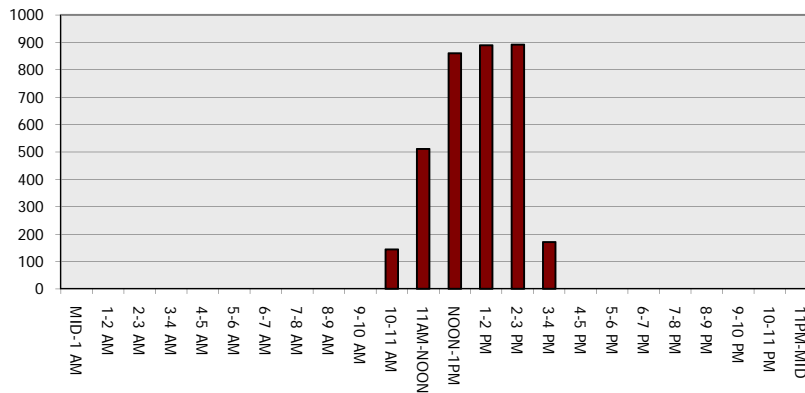
**Main Route - Traffic Demand (Vehicles Per Hour)**



**Main Route Average Delay Per Vehicle (Minutes)**



**Main Route - Average Queue Length (Vehicles)**



**Main Route - Average Speed (MPH)**

