

<b>USH 45: STH 145 TO CTH E (MILWAUKEE COUNTY)</b> <b>OFF-PEAK DAY 2 LANE CLOSURE</b> <b>NO DIVERSION ROUTE (MAX QUEUE METHOD)</b>	<b>OCTOBER</b>
	Analyzed for 2009 Construction Season

**SUMMARY OF TRAFFIC MODEL OUTPUT**

SUNDAY SOUTHBOUND DIRECTION

TIME OF DAY	FLOWS AND CAPACITY IN VEH/HR						AVERAGE SPEEDS IN MPH			
	MAIN ROUTE		SITE CAPA CITY	FLOW		AV.DEL PER VEH (MINS)	AVERAGE QUEUE (VEH)	MAIN ROUTE		SITE
	DEMAND FLOW	PCT HEAVY		MAIN ROUTE	'DIVER TED'			WITHOUT WORK ZONE	WITH WORK ZONE	
MID-1 AM	595	0.0	OFF	595	0	0.00	0	70.0	70.0	70.0
1-2 AM	350	0.0	OFF	350	0	0.00	0	70.2	70.2	70.2
2-3 AM	270	0.0	OFF	270	0	0.00	0	70.2	70.2	70.2
3-4 AM	187	0.0	OFF	187	0	0.00	0	70.2	70.2	70.2
4-5 AM	200	0.0	OFF	200	0	0.00	0	70.2	70.2	70.2
5-6 AM	322	0.0	OFF	322	0	0.00	0	70.2	70.2	70.2
6-7 AM	617	0.0	OFF	617	0	0.00	0	70.0	70.0	70.0
7-8 AM	832	0.0	OFF	832	0	0.00	0	69.7	69.7	69.7
8-9 AM	1154	0.0	OFF	1154	0	0.00	0	69.3	69.3	69.3
9-10 AM	1902	0.0	1499	1902	0	5.66	163	68.4	17.9	30.8
10-11 AM	2374	0.0	1499	1500	874	16.61+	407	67.8	7.9	30.8
11AM-NOON	2767	0.0	1500	1502	1265	16.64+	408	67.3	7.9	30.8
NOON-1PM	3185	0.0	1499	1501	1684	16.73+	411	66.8	7.9	30.8
1-2 PM	3335	0.0	1500	1500	1835	16.73+	411	66.6	7.9	30.8
2-3 PM	3203	0.0	1500	1500	1703	16.73+	411	66.8	7.9	30.8
3-4 PM	3404	0.0	1500	1500	1904	16.73+	411	66.5	7.9	30.8
4-5 PM	3288	0.0	1500	1500	1788	16.73+	411	66.6	7.9	30.8
5-6 PM	3046	0.0	1500	1502	1544	16.71+	410	66.9	7.9	30.8
6-7 PM	2834	0.0	1500	1500	1333	16.66+	408	67.2	7.9	30.8
7-8 PM	2249	0.0	OFF	2249	0	0.24	22	67.9	60.9	60.9
8-9 PM	1551	0.0	OFF	1551	0	0.00	0	68.8	68.8	68.8
9-10 PM	1111	0.0	OFF	1111	0	0.00	0	69.4	69.4	69.4
10-11 PM	748	0.0	OFF	748	0	0.00	0	69.8	69.8	69.8
11PM-MID	509	0.0	OFF	509	0	0.00	0	70.1	70.1	70.1

"OFF" INDICATES NO ROAD WORK (ALL LANES OPEN TO TRAFFIC)

+ INDICATES QUEUEING EXCEEDS USER-SPECIFIED MAXIMUM LIMIT

*----- SITE BREAKDOWN DELAYS -----*	
BREAKDOWN DURATION (MINS)	0
RANGE OF QUEUE DELAY - MIN (VEH-H) MAX	0.0
AV BREAKDOWNS PER DAY	0.00
AV QUEUE DELAY/DAY (VEH-H)	0.0
AV TOTAL DELAY/DAY (VEH-H)	0.0

*----- SITE ACCIDENT DELAYS -----*	
BREAKDOWN DURATION (MINS)	0
RANGE OF QUEUE DELAY - MIN (VEH-H) MAX	0
AV BREAKDOWNS PER DAY	0
AV QUEUE DELAY/DAY (VEH-H)	0
AV TOTAL DELAY/DAY (VEH-H)	0

AVERAGE ACCIDENT NUMBERS (PIA/DAY)	
MAIN ROUTE WITHOUT WORKS	0.0146
MAIN ROUTE WITH WORKS	0.0085
'DIVERSION'	0.0118
PIA: Personal Injury Accidents	
IMPACTS ON ROAD USERS	
ROAD USER COSTS PER DAY	\$130,575
CONGESTED HOURS PER DAY*	9

\*Delays Exceeding User-Specified Maximum

**USH 45: STH 145 TO CTH E (MILWAUKEE COUNTY)  
OFF-PEAK DAY 2 LANE CLOSURE  
NO DIVERSION ROUTE (MAX QUEUE METHOD)**

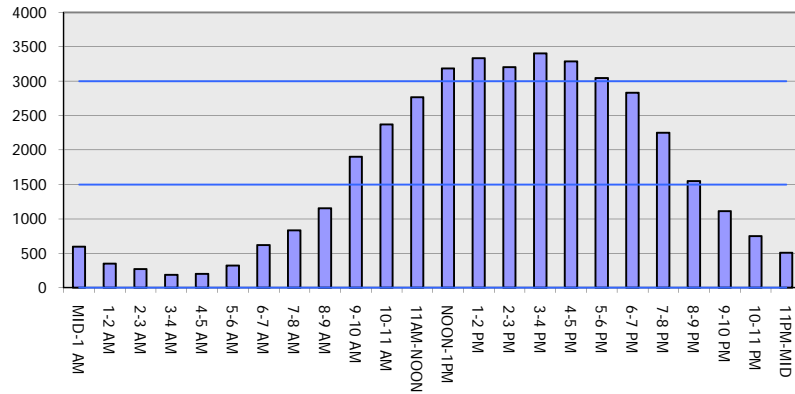
**OCTOBER**

Analyzed for 2009  
Construction Season

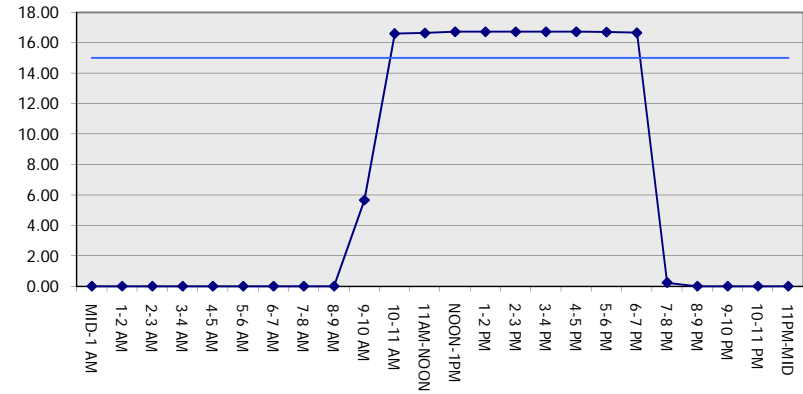
**GRAPHICAL REPRESENTATION OF TRAFFIC MODEL INPUT AND OUTPUT**

**SUNDAY SOUTHBOUND DIRECTION**

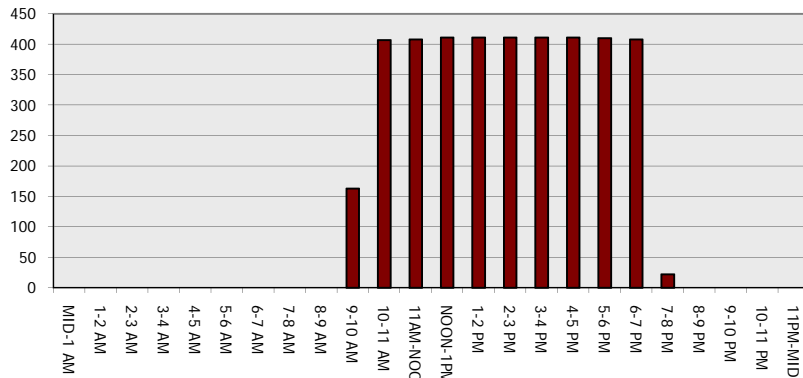
**Main Route - Traffic Demand (Vehicles Per Hour)**



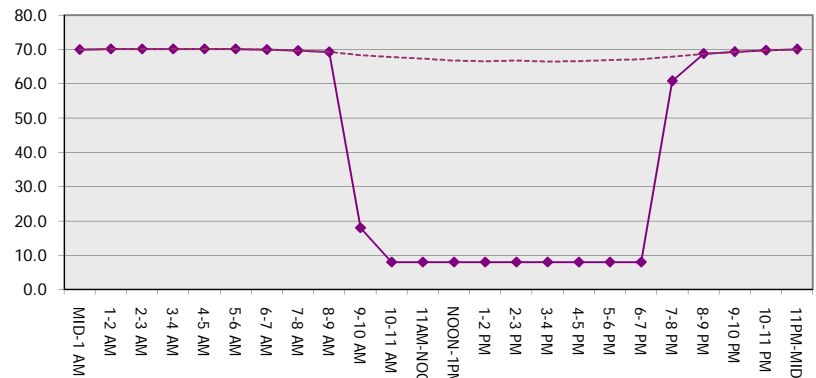
**Main Route Average Delay Per Vehicle (Minutes)**



**Main Route - Average Queue Length (Vehicles)**



**Main Route - Average Speed (MPH)**



<b>USH 45: STH 145 TO CTH E (MILWAUKEE COUNTY)</b> <b>OFF-PEAK DAY 2 LANE CLOSURE</b> <b>NO DIVERSION ROUTE (MAX QUEUE METHOD)</b>	<b>OCTOBER</b>
	Analyzed for 2009 Construction Season

**SUMMARY OF TRAFFIC MODEL OUTPUT**

SUNDAY NORTHBOUND DIRECTION

TIME OF DAY	FLOWS AND CAPACITY IN VEH/HR						AVERAGE SPEEDS IN MPH			
	MAIN ROUTE		SITE CAPA CITY	FLOW		AV.DEL PER VEH (MINS)	AVERAGE QUEUE (VEH)	MAIN ROUTE		SITE
	DEMAND FLOW	PCT HEAVY		MAIN ROUTE	'DIVER TED'			WITHOUT WORK ZONE	WITH WORK ZONE	
MID-1 AM	783	0.0	OFF	783	0	0.00	0	69.7	69.7	69.7
1-2 AM	452	0.0	OFF	452	0	0.00	0	70.2	70.2	70.2
2-3 AM	404	0.0	OFF	404	0	0.00	0	70.2	70.2	70.2
3-4 AM	258	0.0	OFF	258	0	0.00	0	70.2	70.2	70.2
4-5 AM	207	0.0	OFF	207	0	0.00	0	70.2	70.2	70.2
5-6 AM	360	0.0	OFF	360	0	0.00	0	70.2	70.2	70.2
6-7 AM	558	0.0	OFF	558	0	0.00	0	70.0	70.0	70.0
7-8 AM	908	0.0	OFF	908	0	0.00	0	69.6	69.6	69.6
8-9 AM	1291	0.0	OFF	1291	0	0.00	0	69.1	69.1	69.1
9-10 AM	1773	0.0	1499	1773	0	4.14	105	68.6	22.4	30.8
10-11 AM	2273	0.0	1499	1648	625	16.05+	393	67.9	8.1	30.8
11AM-NOON	2665	0.0	1499	1497	1168	16.63+	407	67.4	7.9	30.8
NOON-1PM	2986	0.0	1499	1497	1489	16.70+	409	67.0	7.9	30.8
1-2 PM	2893	0.0	1499	1498	1395	16.67+	409	67.1	7.9	30.8
2-3 PM	2817	0.0	1500	1499	1319	16.66+	408	67.3	7.9	30.8
3-4 PM	3048	0.0	1499	1500	1548	16.71+	410	66.9	7.9	30.8
4-5 PM	2894	0.0	1500	1499	1394	16.67+	409	67.1	7.9	30.8
5-6 PM	2636	0.0	1500	1499	1137	16.62+	407	67.4	7.9	30.8
6-7 PM	2239	0.0	1500	1500	739	16.62+	407	67.9	7.9	30.8
7-8 PM	1856	0.0	OFF	1856	0	0.22	20	68.4	61.8	61.8
8-9 PM	1376	0.0	OFF	1376	0	0.00	0	69.0	69.0	69.0
9-10 PM	1102	0.0	OFF	1102	0	0.00	0	69.4	69.4	69.4
10-11 PM	1017	0.0	OFF	1017	0	0.00	0	69.5	69.5	69.5
11PM-MID	609	0.0	OFF	609	0	0.00	0	70.0	70.0	70.0

"OFF" INDICATES NO ROAD WORK (ALL LANES OPEN TO TRAFFIC)

+ INDICATES QUEUEING EXCEEDS USER-SPECIFIED MAXIMUM LIMIT

*----- SITE BREAKDOWN DELAYS -----*	
BREAKDOWN DURATION (MINS)	0
RANGE OF QUEUE DELAY - MIN	0.0
(VEH-H) MAX	0.0
AV BREAKDOWNS PER DAY	0.00
AV QUEUE DELAY/DAY (VEH-H)	0.0
AV TOTAL DELAY/DAY (VEH-H)	0.0

*----- SITE ACCIDENT DELAYS -----*	
BREAKDOWN DURATION (MINS)	0
RANGE OF QUEUE DELAY - MIN	0
(VEH-H) MAX	0
AV BREAKDOWNS PER DAY	0
AV QUEUE DELAY/DAY (VEH-H)	0
AV TOTAL DELAY/DAY (VEH-H)	0

AVERAGE ACCIDENT NUMBERS (PIA/DAY)	
MAIN ROUTE WITHOUT WORKS	0.0137
MAIN ROUTE WITH WORKS	0.0087
'DIVERSION'	0.0092

PIA: Personal Injury Accidents

ECONOMIC IMPACT ON ROAD USERS	
ROAD USER COSTS PER DAY	\$115,072
CONGESTED HOURS PER DAY*	9

\*Delays Exceeding User-Specified Maximum

**USH 45: STH 145 TO CTH E (MILWAUKEE COUNTY)  
 OFF-PEAK DAY 2 LANE CLOSURE  
 NO DIVERSION ROUTE (MAX QUEUE METHOD)**

**OCTOBER**

Analyzed for 2009  
 Construction Season

**GRAPHICAL REPRESENTATION OF TRAFFIC MODEL INPUT AND OUTPUT**  
**SUNDAY NORTHBOUND DIRECTION**

