

<b>USH 45: STH 145 TO CTH E (MILWAUKEE COUNTY)</b> <b>OFF-PEAK DAY CLOSURE</b> <b>NO DIVERSION ROUTE (MAX QUEUE METHOD)</b>	<b>OCTOBER</b>
	Analyzed for 2009 Construction Season

**SUMMARY OF TRAFFIC MODEL OUTPUT**

SUNDAY SOUTHBOUND DIRECTION

TIME OF DAY	FLOWS AND CAPACITY IN VEH/HR						AVERAGE SPEEDS IN MPH			
	MAIN ROUTE		SITE CAPA CITY	FLOW		AV.DEL PER VEH (MINS)	AVERAGE QUEUE (VEH)	MAIN ROUTE		SITE
	DEMAND FLOW	PCT HEAVY		MAIN ROUTE	'DIVER TED'			WITHOUT WORK ZONE	WITH WORK ZONE	
MID-1 AM	595	0.0	OFF	595	0	0.00	0	70.0	70.0	70.0
1-2 AM	350	0.0	OFF	350	0	0.00	0	70.2	70.2	70.2
2-3 AM	270	0.0	OFF	270	0	0.00	0	70.2	70.2	70.2
3-4 AM	187	0.0	OFF	187	0	0.00	0	70.2	70.2	70.2
4-5 AM	200	0.0	OFF	200	0	0.00	0	70.2	70.2	70.2
5-6 AM	322	0.0	OFF	322	0	0.00	0	70.2	70.2	70.2
6-7 AM	617	0.0	OFF	617	0	0.00	0	70.0	70.0	70.0
7-8 AM	832	0.0	OFF	832	0	0.00	0	69.7	69.7	69.7
8-9 AM	1154	0.0	OFF	1154	0	0.00	0	69.3	69.3	69.3
9-10 AM	1902	0.0	3000	1902	0	0.34	0	68.4	58.6	49.7
10-11 AM	2374	0.0	3000	2374	0	0.33	0	67.8	58.4	49.7
11AM-NOON	2767	0.0	2999	2767	0	0.57	0	67.3	52.5	41.2
NOON-1PM	3185	0.0	2999	3185	0	1.91	74	66.8	34.7	37.3
1-2 PM	3335	0.0	3000	3335	0	6.86	352	66.6	16.1	37.3
2-3 PM	3203	0.0	2999	3203	0	11.92	619	66.8	12.1	37.3
3-4 PM	3404	0.0	3000	3187	217	16.14+	851	66.5	10.7	37.3
4-5 PM	3288	0.0	2999	2987	301	16.68+	879	66.6	10.6	37.3
5-6 PM	3046	0.0	2999	2974	72	16.62+	875	66.9	10.6	37.3
6-7 PM	2834	0.0	2999	2834	0	15.46+	812	67.2	10.9	37.3
7-8 PM	2249	0.0	OFF	2249	0	0.69	66	67.9	50.7	50.7
8-9 PM	1551	0.0	OFF	1551	0	0.00	0	68.8	68.8	68.8
9-10 PM	1111	0.0	OFF	1111	0	0.00	0	69.4	69.4	69.4
10-11 PM	748	0.0	OFF	748	0	0.00	0	69.8	69.8	69.8
11PM-MID	509	0.0	OFF	509	0	0.00	0	70.1	70.1	70.1

"OFF" INDICATES NO ROAD WORK (ALL LANES OPEN TO TRAFFIC)

+ INDICATES QUEUEING EXCEEDS USER-SPECIFIED MAXIMUM LIMIT

*----- SITE BREAKDOWN DELAYS -----*	
BREAKDOWN DURATION (MINS)	0
RANGE OF QUEUE DELAY - MIN (VEH-H) MAX	0.0
AV BREAKDOWNS PER DAY	0.00
AV QUEUE DELAY/DAY (VEH-H)	0.0
AV TOTAL DELAY/DAY (VEH-H)	0.0

*----- SITE ACCIDENT DELAYS -----*	
BREAKDOWN DURATION (MINS)	0
RANGE OF QUEUE DELAY - MIN (VEH-H) MAX	0
AV BREAKDOWNS PER DAY	0
AV QUEUE DELAY/DAY (VEH-H)	0
AV TOTAL DELAY/DAY (VEH-H)	0

AVERAGE ACCIDENT NUMBERS (PIA/DAY)	
MAIN ROUTE WITHOUT WORKS	0.0146
MAIN ROUTE WITH WORKS	0.0125
'DIVERSION'	0.0005
PIA: Personal Injury Accidents	
IMPACTS ON ROAD USERS	
ROAD USER COSTS PER DAY	\$75,003
CONGESTED HOURS PER DAY*	4

\*Delays Exceeding User-Specified Maximum

**USH 45: STH 145 TO CTH E (MILWAUKEE COUNTY)  
OFF-PEAK DAY CLOSURE  
NO DIVERSION ROUTE (MAX QUEUE METHOD)**

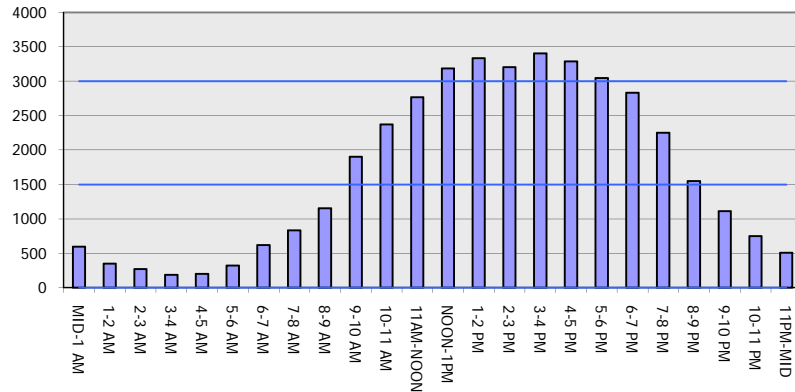
**OCTOBER**

Analyzed for 2009  
Construction Season

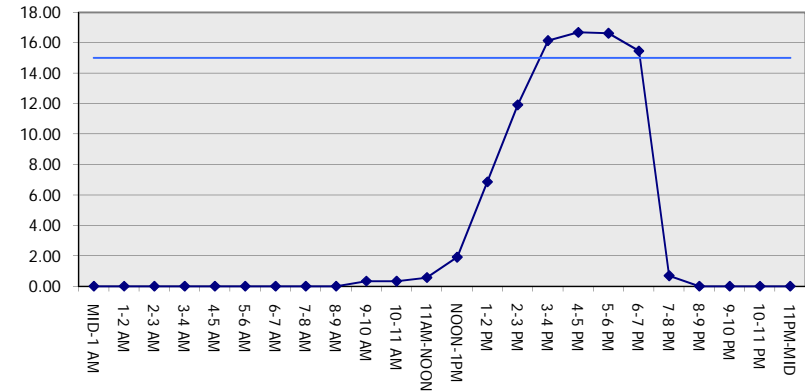
**GRAPHICAL REPRESENTATION OF TRAFFIC MODEL INPUT AND OUTPUT**

**SUNDAY SOUTHBOUND DIRECTION**

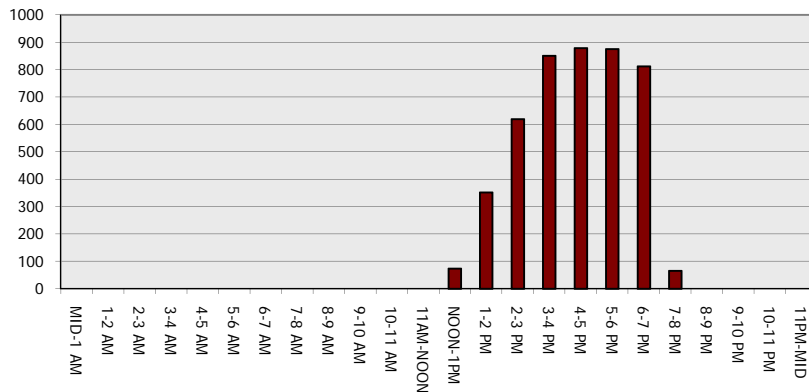
**Main Route - Traffic Demand (Vehicles Per Hour)**



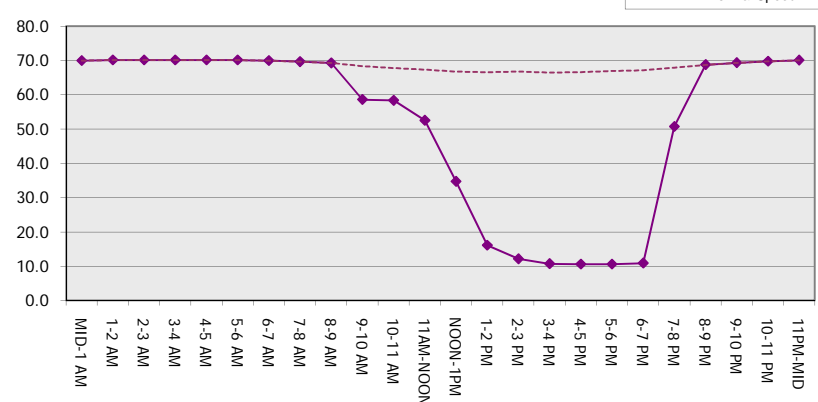
**Main Route Average Delay Per Vehicle (Minutes)**



**Main Route - Average Queue Length (Vehicles)**



**Main Route - Average Speed (MPH)**



<b>USH 45: STH 145 TO CTH E (MILWAUKEE COUNTY)</b> <b>OFF-PEAK DAY CLOSURE</b> <b>NO DIVERSION ROUTE (MAX QUEUE METHOD)</b>	<b>OCTOBER</b>
	Analyzed for 2009 Construction Season

**SUMMARY OF TRAFFIC MODEL OUTPUT**

SUNDAY NORTHBOUND DIRECTION

TIME OF DAY	FLOWS AND CAPACITY IN VEH/HR						AVERAGE SPEEDS IN MPH			
	MAIN ROUTE		SITE CAPA CITY	FLOW		AV.DEL PER VEH (MINS)	AVERAGE QUEUE (VEH)	MAIN ROUTE		SITE
	DEMAND FLOW	PCT HEAVY		MAIN ROUTE	'DIVER TED'			WITHOUT WORK ZONE	WITH WORK ZONE	
MID-1 AM	783	0.0	OFF	783	0	0.00	0	69.7	69.7	69.7
1-2 AM	452	0.0	OFF	452	0	0.00	0	70.2	70.2	70.2
2-3 AM	404	0.0	OFF	404	0	0.00	0	70.2	70.2	70.2
3-4 AM	258	0.0	OFF	258	0	0.00	0	70.2	70.2	70.2
4-5 AM	207	0.0	OFF	207	0	0.00	0	70.2	70.2	70.2
5-6 AM	360	0.0	OFF	360	0	0.00	0	70.2	70.2	70.2
6-7 AM	558	0.0	OFF	558	0	0.00	0	70.0	70.0	70.0
7-8 AM	908	0.0	OFF	908	0	0.00	0	69.6	69.6	69.6
8-9 AM	1291	0.0	OFF	1291	0	0.00	0	69.1	69.1	69.1
9-10 AM	1773	0.0	3000	1773	0	0.34	0	68.6	58.7	49.7
10-11 AM	2273	0.0	3000	2273	0	0.33	0	67.9	58.4	49.7
11AM-NOON	2665	0.0	2999	2665	0	0.51	0	67.4	54.0	43.2
NOON-1PM	2986	0.0	2999	2986	0	0.75	1	67.0	49.2	37.6
1-2 PM	2893	0.0	3000	2893	0	0.66	0	67.1	50.7	38.9
2-3 PM	2817	0.0	2999	2817	0	0.61	0	67.3	51.9	40.2
3-4 PM	3048	0.0	2999	3048	0	1.11	21	66.9	43.5	37.3
4-5 PM	2894	0.0	2999	2894	0	0.97	18	67.1	45.5	38.6
5-6 PM	2636	0.0	3000	2636	0	0.49	0	67.4	54.4	43.7
6-7 PM	2239	0.0	3000	2239	0	0.33	0	67.9	58.4	49.7
7-8 PM	1856	0.0	OFF	1856	0	0.00	0	68.4	68.4	68.4
8-9 PM	1376	0.0	OFF	1376	0	0.00	0	69.0	69.0	69.0
9-10 PM	1102	0.0	OFF	1102	0	0.00	0	69.4	69.4	69.4
10-11 PM	1017	0.0	OFF	1017	0	0.00	0	69.5	69.5	69.5
11PM-MID	609	0.0	OFF	609	0	0.00	0	70.0	70.0	70.0

"OFF" INDICATES NO ROAD WORK (ALL LANES OPEN TO TRAFFIC)

*----- SITE BREAKDOWN DELAYS -----*	
BREAKDOWN DURATION (MINS)	0
RANGE OF QUEUE DELAY - MIN (VEH-H) MAX	0.0
AV BREAKDOWNS PER DAY	0.00
AV QUEUE DELAY/DAY (VEH-H)	0.0
AV TOTAL DELAY/DAY (VEH-H)	0.0

*----- SITE ACCIDENT DELAYS -----*	
BREAKDOWN DURATION (MINS)	0
RANGE OF QUEUE DELAY - MIN (VEH-H) MAX	0
AV BREAKDOWNS PER DAY	0
AV QUEUE DELAY/DAY (VEH-H)	0
AV TOTAL DELAY/DAY (VEH-H)	0

AVERAGE ACCIDENT NUMBERS (PIA/DAY)	
MAIN ROUTE WITHOUT WORKS	0.0137
MAIN ROUTE WITH WORKS	0.0120
'DIVERSION'	0.0000

PIA: Personal Injury Accidents

ECONOMIC IMPACT ON ROAD USERS	
ROAD USER COSTS PER DAY	\$4,567
CONGESTED HOURS PER DAY*	0

\*Delays Exceeding User-Specified Maximum

**USH 45: STH 145 TO CTH E (MILWAUKEE COUNTY)  
OFF-PEAK DAY CLOSURE  
NO DIVERSION ROUTE (MAX QUEUE METHOD)**

**OCTOBER**

Analyzed for 2009  
Construction Season

**GRAPHICAL REPRESENTATION OF TRAFFIC MODEL INPUT AND OUTPUT**  
**SUNDAY NORTHBOUND DIRECTION**

