

**USH 45: STH 145 TO CTH E (MILWAUKEE COUNTY)  
OFF-PEAK DAY CLOSURE  
NO DIVERSION ROUTE (MAX QUEUE METHOD)**

**OCTOBER**  
Analyzed for 2009  
Construction Season

**SUMMARY OF TRAFFIC MODEL OUTPUT**  
SATURDAY SOUTHBOUND DIRECTION

TIME OF DAY	FLOWS AND CAPACITY IN VEH/HR						AVERAGE SPEEDS IN MPH			
	MAIN ROUTE		SITE CAPA CITY	FLOW		AV.DEL PER VEH (MINS)	AVERAGE QUEUE (VEH)	MAIN ROUTE		SITE
	DEMAND FLOW	PCT HEAVY		MAIN ROUTE	'DIVER TED'			WITHOUT WORK ZONE	WITH WORK ZONE	
MID-1 AM	548	0.0	OFF	548	0	0.00	0	70.0	70.0	70.0
1-2 AM	329	0.0	OFF	329	0	0.00	0	70.2	70.2	70.2
2-3 AM	251	0.0	OFF	251	0	0.00	0	70.2	70.2	70.2
3-4 AM	280	0.0	OFF	280	0	0.00	0	70.2	70.2	70.2
4-5 AM	380	0.0	OFF	380	0	0.00	0	70.2	70.2	70.2
5-6 AM	686	0.0	OFF	686	0	0.00	0	69.9	69.9	69.9
6-7 AM	1193	0.0	OFF	1193	0	0.00	0	69.2	69.2	69.2
7-8 AM	1797	0.0	OFF	1797	0	0.00	0	68.5	68.5	68.5
8-9 AM	2362	0.0	3000	2362	0	0.33	0	67.8	58.4	49.7
9-10 AM	2800	0.0	2999	2800	0	0.60	0	67.3	52.1	40.7
10-11 AM	3245	0.0	2999	3245	0	2.40	107	66.7	30.9	37.3
11AM-NOON	3277	0.0	2999	3277	0	7.36	373	66.6	15.3	37.3
NOON-1PM	3533	0.0	3000	3318	214	14.42+	764	66.3	11.2	37.3
1-2 PM	3203	0.0	3000	3023	180	16.64+	877	66.8	10.6	37.3
2-3 PM	3320	0.0	3000	3007	313	16.68+	879	66.6	10.6	37.3
3-4 PM	3348	0.0	3000	3004	343	16.68+	880	66.6	10.6	37.3
4-5 PM	3201	0.0	3000	3002	200	16.67+	879	66.8	10.6	37.3
5-6 PM	2971	0.0	3000	2944	27	16.39+	863	67.1	10.6	37.3
6-7 PM	2529	0.0	OFF	2529	0	1.00	96	67.6	45.3	45.3
7-8 PM	2036	0.0	OFF	2036	0	0.00	0	68.2	68.2	68.2
8-9 PM	1611	0.0	OFF	1611	0	0.00	0	68.7	68.7	68.7
9-10 PM	1466	0.0	OFF	1466	0	0.00	0	68.9	68.9	68.9
10-11 PM	1165	0.0	OFF	1165	0	0.00	0	69.3	69.3	69.3
11PM-MID	904	0.0	OFF	904	0	0.00	0	69.6	69.6	69.6

"OFF" INDICATES NO ROAD WORK (ALL LANES OPEN TO TRAFFIC)

+ INDICATES QUEUEING EXCEEDS USER-SPECIFIED MAXIMUM LIMIT

*----- SITE BREAKDOWN DELAYS -----*	
BREAKDOWN DURATION (MINS)	0
RANGE OF QUEUE DELAY - MIN (VEH-H) MAX	0.0
AV BREAKDOWNS PER DAY	0.00
AV QUEUE DELAY/DAY (VEH-H)	0.0
AV TOTAL DELAY/DAY (VEH-H)	0.0

*----- SITE ACCIDENT DELAYS -----*	
BREAKDOWN DURATION (MINS)	0
RANGE OF QUEUE DELAY - MIN (VEH-H) MAX	0
AV BREAKDOWNS PER DAY	0
AV QUEUE DELAY/DAY (VEH-H)	0
AV TOTAL DELAY/DAY (VEH-H)	0

AVERAGE ACCIDENT NUMBERS (PIA/DAY)	
MAIN ROUTE WITHOUT WORKS	0.0170
MAIN ROUTE WITH WORKS	0.0145
'DIVERSION'	0.0011
PIA: Personal Injury Accidents	
IMPACTS ON ROAD USERS	
ROAD USER COSTS PER DAY	\$95,459
CONGESTED HOURS PER DAY*	6

\*Delays Exceeding User-Specified Maximum

**USH 45: STH 145 TO CTH E (MILWAUKEE COUNTY)  
OFF-PEAK DAY CLOSURE  
NO DIVERSION ROUTE (MAX QUEUE METHOD)**

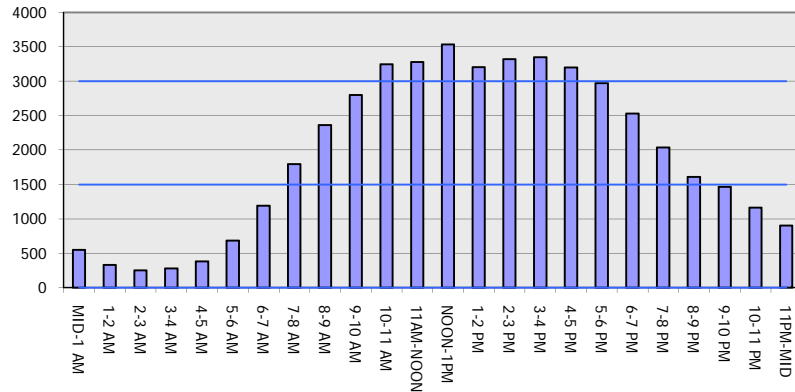
**OCTOBER**

Analyzed for 2009  
Construction Season

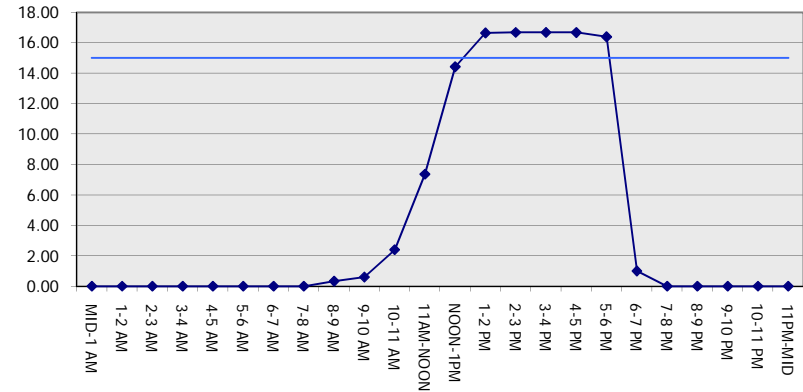
**GRAPHICAL REPRESENTATION OF TRAFFIC MODEL INPUT AND OUTPUT**

**SATURDAY SOUTHBOUND DIRECTION**

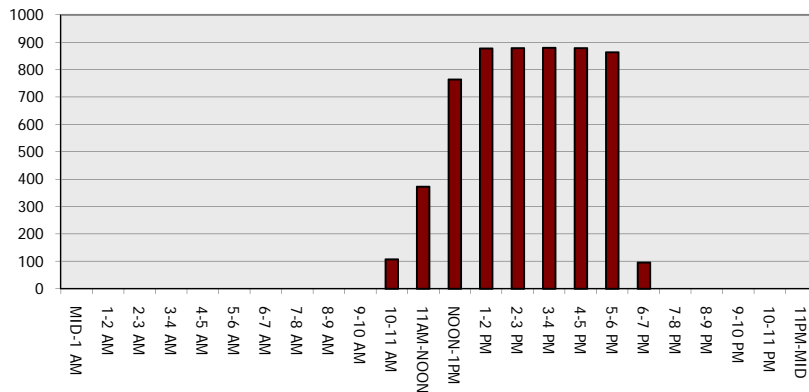
**Main Route - Traffic Demand (Vehicles Per Hour)**



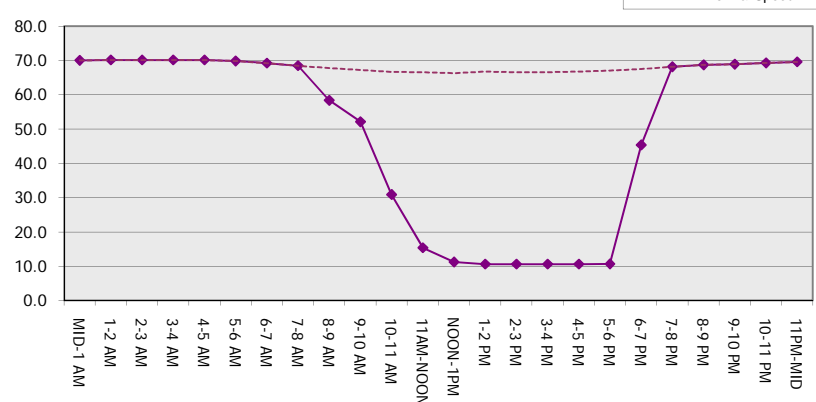
**Main Route Average Delay Per Vehicle (Minutes)**



**Main Route - Average Queue Length (Vehicles)**



**Main Route - Average Speed (MPH)**



<b>USH 45: STH 145 TO CTH E (MILWAUKEE COUNTY)</b> <b>OFF-PEAK DAY CLOSURE</b> <b>NO DIVERSION ROUTE (MAX QUEUE METHOD)</b>	<b>OCTOBER</b>
	Analyzed for 2009 Construction Season

**SUMMARY OF TRAFFIC MODEL OUTPUT**

SATURDAY NORTHBOUND DIRECTION

TIME OF DAY	FLOWS AND CAPACITY IN VEH/HR						AVERAGE SPEEDS IN MPH			
	MAIN ROUTE		SITE CAPA CITY	FLOW		AV.DEL PER VEH (MINS)	AVERAGE QUEUE (VEH)	MAIN ROUTE		SITE
	DEMAND FLOW	PCT HEAVY		MAIN ROUTE	'DIVER TED'			WITHOUT WORK ZONE	WITH WORK ZONE	
MID-1 AM	757	0.0	OFF	757	0	0.00	0	69.8	69.8	69.8
1-2 AM	450	0.0	OFF	450	0	0.00	0	70.2	70.2	70.2
2-3 AM	394	0.0	OFF	394	0	0.00	0	70.2	70.2	70.2
3-4 AM	334	0.0	OFF	334	0	0.00	0	70.2	70.2	70.2
4-5 AM	429	0.0	OFF	429	0	0.00	0	70.2	70.2	70.2
5-6 AM	774	0.0	OFF	774	0	0.00	0	69.8	69.8	69.8
6-7 AM	1202	0.0	OFF	1202	0	0.00	0	69.2	69.2	69.2
7-8 AM	1735	0.0	OFF	1735	0	0.00	0	68.6	68.6	68.6
8-9 AM	2295	0.0	3000	2295	0	0.33	0	67.9	58.4	49.7
9-10 AM	2653	0.0	2999	2653	0	0.50	0	67.4	54.2	43.5
10-11 AM	3046	0.0	2999	3046	0	0.99	16	66.9	45.3	37.6
11AM-NOON	3367	0.0	3000	3367	0	4.59	236	66.6	20.9	37.3
NOON-1PM	3511	0.0	3000	3511	0	12.96+	688	66.4	11.7	37.3
1-2 PM	3424	0.0	2999	2951	472	16.65+	878	66.5	10.6	37.3
2-3 PM	3441	0.0	2999	2993	448	16.69+	881	66.4	10.5	37.3
3-4 PM	3490	0.0	2999	2996	493	16.70+	881	66.4	10.5	37.3
4-5 PM	3267	0.0	2999	2997	270	16.68+	879	66.7	10.6	37.3
5-6 PM	2949	0.0	2999	2928	22	16.36+	861	67.1	10.6	37.3
6-7 PM	2574	0.0	OFF	2574	0	0.99	96	67.6	45.5	45.5
7-8 PM	2176	0.0	OFF	2176	0	0.00	0	68.0	68.0	68.0
8-9 PM	1875	0.0	OFF	1875	0	0.00	0	68.4	68.4	68.4
9-10 PM	1764	0.0	OFF	1764	0	0.00	0	68.6	68.6	68.6
10-11 PM	1558	0.0	OFF	1558	0	0.00	0	68.8	68.8	68.8
11PM-MID	1157	0.0	OFF	1157	0	0.00	0	69.3	69.3	69.3

"OFF" INDICATES NO ROAD WORK (ALL LANES OPEN TO TRAFFIC)

+ INDICATES QUEUEING EXCEEDS USER-SPECIFIED MAXIMUM LIMIT

*----- SITE BREAKDOWN DELAYS -----*	
BREAKDOWN DURATION (MINS)	0
RANGE OF QUEUE DELAY - MIN (VEH-H) MAX	0.0
AV BREAKDOWNS PER DAY	0.00
AV QUEUE DELAY/DAY (VEH-H)	0.0
AV TOTAL DELAY/DAY (VEH-H)	0.0

*----- SITE ACCIDENT DELAYS -----*	
BREAKDOWN DURATION (MINS)	0
RANGE OF QUEUE DELAY - MIN (VEH-H) MAX	0
AV BREAKDOWNS PER DAY	0
AV QUEUE DELAY/DAY (VEH-H)	0
AV TOTAL DELAY/DAY (VEH-H)	0

AVERAGE ACCIDENT NUMBERS (PIA/DAY)	
MAIN ROUTE WITHOUT WORKS	0.0178
MAIN ROUTE WITH WORKS	0.0152
'DIVERSION'	0.0014

PIA: Personal Injury Accidents

ECONOMIC IMPACT ON ROAD USERS	
ROAD USER COSTS PER DAY	\$92,671
CONGESTED HOURS PER DAY*	6

\*Delays Exceeding User-Specified Maximum

**USH 45: STH 145 TO CTH E (MILWAUKEE COUNTY)  
OFF-PEAK DAY CLOSURE  
NO DIVERSION ROUTE (MAX QUEUE METHOD)**

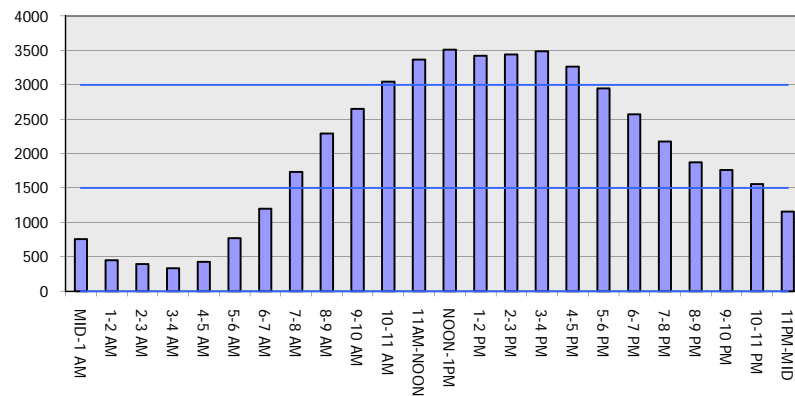
**OCTOBER**

Analyzed for 2009  
Construction Season

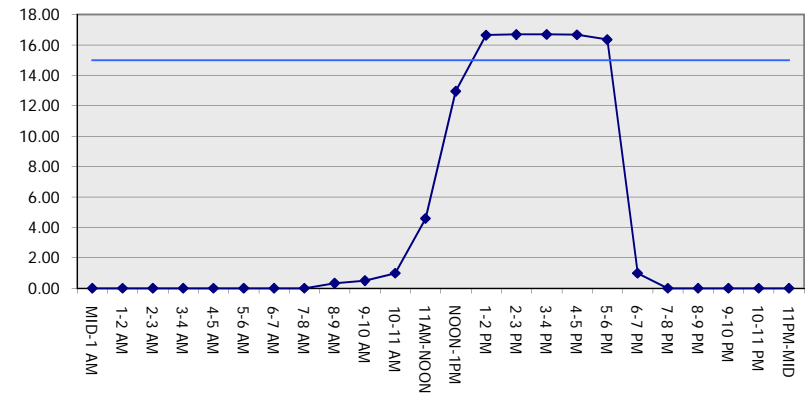
**GRAPHICAL REPRESENTATION OF TRAFFIC MODEL INPUT AND OUTPUT**

**SATURDAY NORTHBOUND DIRECTION**

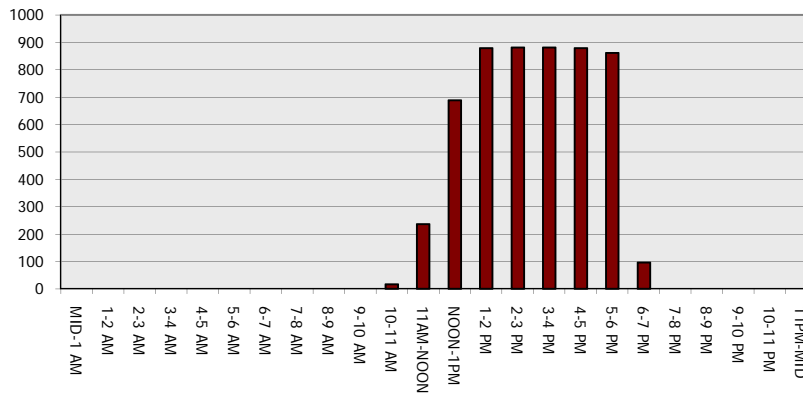
**Main Route - Traffic Demand (Vehicles Per Hour)**



**Main Route Average Delay Per Vehicle (Minutes)**



**Main Route - Average Queue Length (Vehicles)**



**Main Route - Average Speed (MPH)**

