

USH 45: STH 145 TO CTH E (MILWAUKEE COUNTY) OFF-PEAK DAY CLOSURE NO DIVERSION ROUTE (MAX QUEUE METHOD)	OCTOBER
	Analyzed for 2009 Construction Season

SUMMARY OF TRAFFIC MODEL OUTPUT

MON-THUR SOUTHBOUND DIRECTION

TIME OF DAY	FLOWS AND CAPACITY IN VEH/HR						AVERAGE SPEEDS IN MPH			
	MAIN ROUTE		SITE CAPA CITY	FLOW		AV.DEL PER VEH (MINS)	AVERAGE QUEUE (VEH)	MAIN ROUTE		SITE
	DEMAND FLOW	PCT HEAVY		MAIN ROUTE	'DIVER TED'			WITHOUT WORK ZONE	WITH WORK ZONE	
MID-1 AM	345	0.0	OFF	345	0	0.00	0	70.2	70.2	70.2
1-2 AM	260	0.0	OFF	260	0	0.00	0	70.2	70.2	70.2
2-3 AM	266	0.0	OFF	266	0	0.00	0	70.2	70.2	70.2
3-4 AM	371	0.0	OFF	371	0	0.00	0	70.2	70.2	70.2
4-5 AM	745	0.0	OFF	745	0	0.00	0	69.8	69.8	69.8
5-6 AM	2210	0.0	OFF	2210	0	0.00	0	68.0	68.0	68.0
6-7 AM	4736	0.0	OFF	4736	0	0.00	0	58.5	58.5	58.5
7-8 AM	5611	0.0	OFF	5611	0	0.00	0	52.5	52.5	52.5
8-9 AM	4433	0.0	OFF	4433	0	0.00	0	60.5	60.5	60.5
9-10 AM	3325	0.0	OFF	3325	0	0.00	0	66.6	66.6	66.6
10-11 AM	3072	0.0	2999	3072	0	1.43	40	66.9	39.5	37.3
11AM-NOON	3177	0.0	3000	3177	0	3.42	155	66.8	25.2	37.3
NOON-1PM	3217	0.0	3000	3217	0	7.05	354	66.8	15.6	37.3
1-2 PM	3261	0.0	2999	3261	0	11.08	575	66.7	12.5	37.3
2-3 PM	3881	0.0	2999	3150	731	16.38+	869	64.3	10.6	37.3
3-4 PM	4312	0.0	OFF	4312	0	2.52	227	61.4	28.9	28.9
4-5 PM	4285	0.0	OFF	4285	0	0.00	0	61.6	61.6	61.6
5-6 PM	4129	0.0	OFF	4129	0	0.00	0	62.7	62.7	62.7
6-7 PM	3075	0.0	OFF	3075	0	0.00	0	66.9	66.9	66.9
7-8 PM	1966	0.0	OFF	1966	0	0.00	0	68.3	68.3	68.3
8-9 PM	1504	0.0	OFF	1504	0	0.00	0	68.9	68.9	68.9
9-10 PM	1312	0.0	OFF	1312	0	0.00	0	69.1	69.1	69.1
10-11 PM	950	0.0	OFF	950	0	0.00	0	69.6	69.6	69.6
11PM-MID	854	0.0	OFF	854	0	0.00	0	69.7	69.7	69.7

"OFF" INDICATES NO ROAD WORK (ALL LANES OPEN TO TRAFFIC)

+ INDICATES QUEUEING EXCEEDS USER-SPECIFIED MAXIMUM LIMIT

----- SITE BREAKDOWN DELAYS -----	
BREAKDOWN DURATION (MINS)	0
RANGE OF QUEUE DELAY - MIN (VEH-H) MAX	0.0
AV BREAKDOWNS PER DAY	0.00
AV QUEUE DELAY/DAY (VEH-H)	0.0
AV TOTAL DELAY/DAY (VEH-H)	0.0

----- SITE ACCIDENT DELAYS -----	
BREAKDOWN DURATION (MINS)	0
RANGE OF QUEUE DELAY - MIN (VEH-H) MAX	0
AV BREAKDOWNS PER DAY	0
AV QUEUE DELAY/DAY (VEH-H)	0
AV TOTAL DELAY/DAY (VEH-H)	0

AVERAGE ACCIDENT NUMBERS (PIA/DAY)	
MAIN ROUTE WITHOUT WORKS	0.0224
MAIN ROUTE WITH WORKS	0.0211
'DIVERSION'	0.0006
<small>PIA: Personal Injury Accidents</small>	
IMPACTS ON ROAD USERS	
ROAD USER COSTS PER DAY	\$26,028
CONGESTED HOURS PER DAY*	1

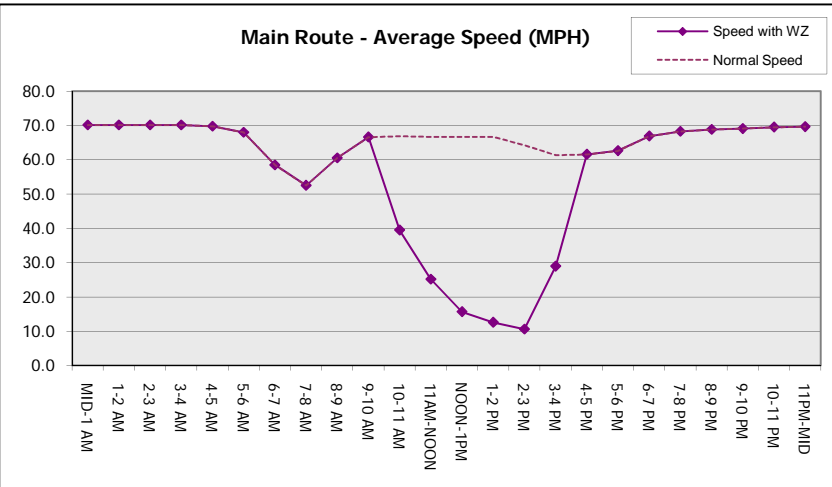
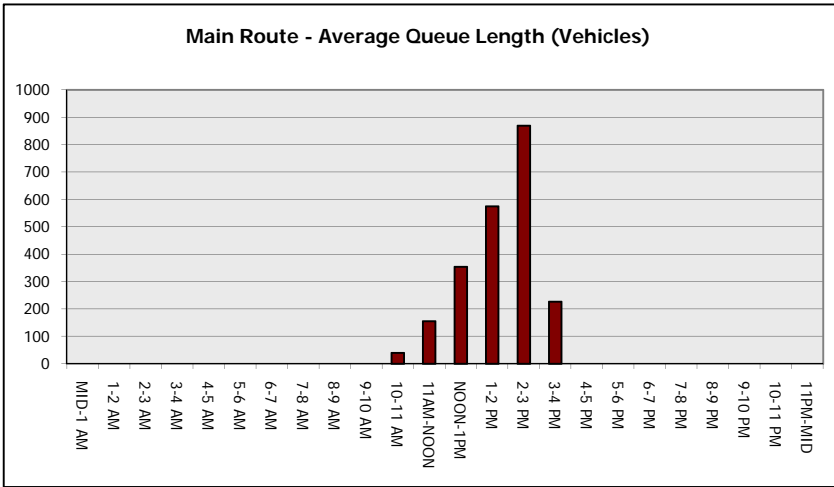
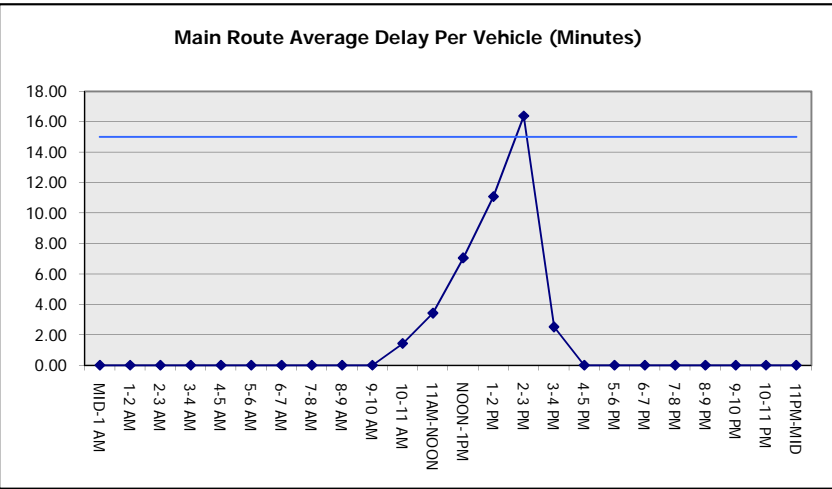
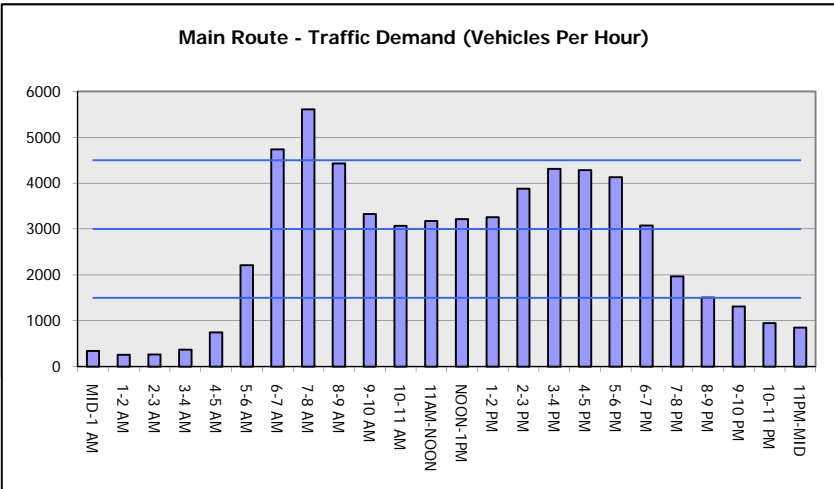
*Delays Exceeding User-Specified Maximum

**USH 45: STH 145 TO CTH E (MILWAUKEE COUNTY)
OFF-PEAK DAY CLOSURE
NO DIVERSION ROUTE (MAX QUEUE METHOD)**

OCTOBER
Analyzed for 2009
Construction Season

GRAPHICAL REPRESENTATION OF TRAFFIC MODEL INPUT AND OUTPUT

MON-THUR SOUTHBOUND DIRECTION



USH 45: STH 145 TO CTH E (MILWAUKEE COUNTY) OFF-PEAK DAY CLOSURE NO DIVERSION ROUTE (MAX QUEUE METHOD)	OCTOBER
	Analyzed for 2009 Construction Season

SUMMARY OF TRAFFIC MODEL OUTPUT

MON-THUR NORTHBOUND DIRECTION

TIME OF DAY	FLOWS AND CAPACITY IN VEH/HR							AVERAGE SPEEDS IN MPH		
	MAIN ROUTE		SITE CAPA CITY	FLOW		AV.DEL PER VEH (MINS)	AVERAGE QUEUE (VEH)	MAIN ROUTE		SITE
	DEMAND FLOW	PCT HEAVY		MAIN ROUTE	'DIVER TED'			WITHOUT WORK ZONE	WITH WORK ZONE	
MID-1 AM	421	0.0	OFF	421	0	0.00	0	70.2	70.2	70.2
1-2 AM	290	0.0	OFF	290	0	0.00	0	70.2	70.2	70.2
2-3 AM	270	0.0	OFF	270	0	0.00	0	70.2	70.2	70.2
3-4 AM	332	0.0	OFF	332	0	0.00	0	70.2	70.2	70.2
4-5 AM	678	0.0	OFF	678	0	0.00	0	69.9	69.9	69.9
5-6 AM	2001	0.0	OFF	2001	0	0.00	0	68.2	68.2	68.2
6-7 AM	3822	0.0	OFF	3822	0	0.00	0	64.8	64.8	64.8
7-8 AM	4904	0.0	OFF	4904	0	0.00	0	57.4	57.4	57.4
8-9 AM	4096	0.0	OFF	4096	0	0.00	0	62.8	62.8	62.8
9-10 AM	2901	0.0	OFF	2901	0	0.00	0	67.1	67.1	67.1
10-11 AM	2815	0.0	3000	2815	0	0.61	0	67.3	51.9	40.3
11AM-NOON	2939	0.0	2999	2939	0	0.69	0	67.1	50.2	38.2
NOON-1PM	3187	0.0	2999	3187	0	1.97	78	66.8	34.2	37.3
1-2 PM	3422	0.0	3000	3422	0	6.96	364	66.5	16.1	37.3
2-3 PM	4265	0.0	2999	3315	950	16.22+	871	61.7	10.6	37.3
3-4 PM	5159	0.0	OFF	5159	0	5.32	503	55.6	17.7	17.7
4-5 PM	5848	0.0	OFF	5848	0	0.26	22	50.9	46.5	46.5
5-6 PM	5627	0.0	OFF	5627	0	0.00	0	52.4	52.4	52.4
6-7 PM	3613	0.0	OFF	3613	0	0.00	0	66.2	66.2	66.2
7-8 PM	2361	0.0	OFF	2361	0	0.00	0	67.8	67.8	67.8
8-9 PM	1972	0.0	OFF	1972	0	0.00	0	68.3	68.3	68.3
9-10 PM	1790	0.0	OFF	1790	0	0.00	0	68.5	68.5	68.5
10-11 PM	1385	0.0	OFF	1385	0	0.00	0	69.0	69.0	69.0
11PM-MID	829	0.0	OFF	829	0	0.00	0	69.7	69.7	69.7

"OFF" INDICATES NO ROAD WORK (ALL LANES OPEN TO TRAFFIC)

+ INDICATES QUEUEING EXCEEDS USER-SPECIFIED MAXIMUM LIMIT

----- SITE BREAKDOWN DELAYS -----	
BREAKDOWN DURATION (MINS)	0
RANGE OF QUEUE DELAY - MIN	0.0
(VEH-H) MAX	0.0
AV BREAKDOWNS PER DAY	0.00
AV QUEUE DELAY/DAY (VEH-H)	0.0
AV TOTAL DELAY/DAY (VEH-H)	0.0

----- SITE ACCIDENT DELAYS -----	
BREAKDOWN DURATION (MINS)	0
RANGE OF QUEUE DELAY - MIN	0
(VEH-H) MAX	0
AV BREAKDOWNS PER DAY	0
AV QUEUE DELAY/DAY (VEH-H)	0
AV TOTAL DELAY/DAY (VEH-H)	0

AVERAGE ACCIDENT NUMBERS (PIA/DAY)	
MAIN ROUTE WITHOUT WORKS	0.0238
MAIN ROUTE WITH WORKS	0.0224
'DIVERSION'	0.0008

PIA: Personal Injury Accidents

ECONOMIC IMPACT ON ROAD USERS	
ROAD USER COSTS PER DAY	\$23,132
CONGESTED HOURS PER DAY*	1

*Delays Exceeding User-Specified Maximum

**USH 45: STH 145 TO CTH E (MILWAUKEE COUNTY)
OFF-PEAK DAY CLOSURE
NO DIVERSION ROUTE (MAX QUEUE METHOD)**

OCTOBER

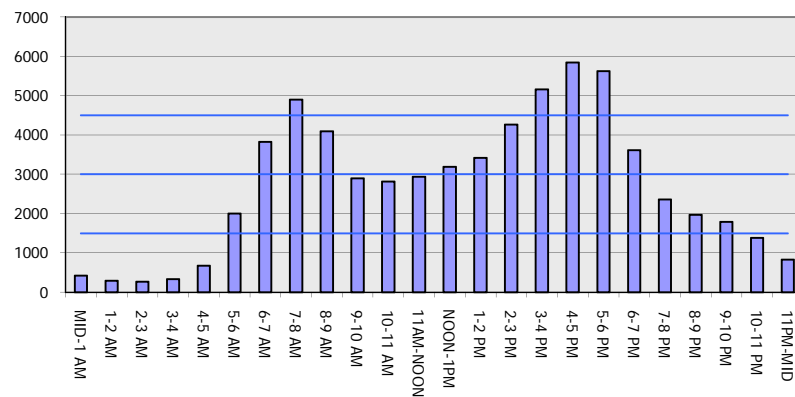
Analyzed for 2009
Construction Season

GRAPHICAL REPRESENTATION OF TRAFFIC MODEL INPUT AND OUTPUT

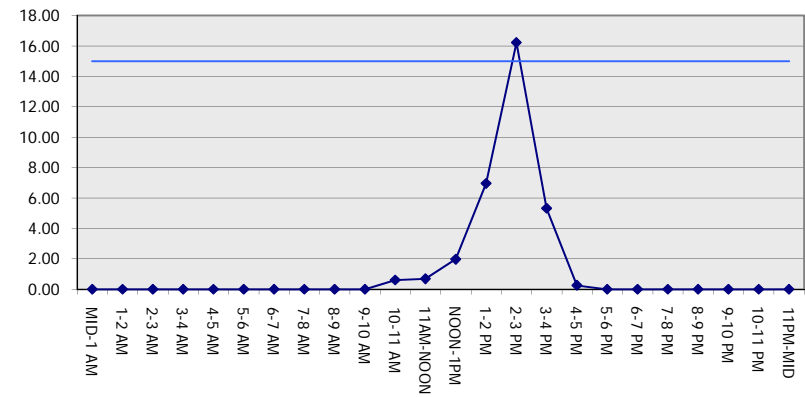
MON-THUR

NORTHBOUND DIRECTION

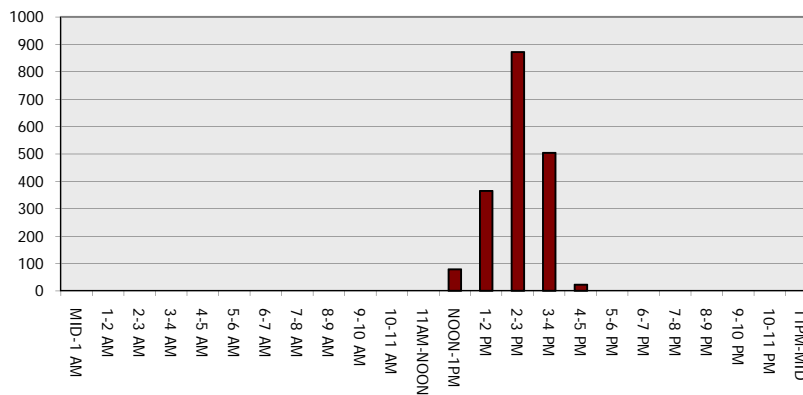
Main Route - Traffic Demand (Vehicles Per Hour)



Main Route Average Delay Per Vehicle (Minutes)



Main Route - Average Queue Length (Vehicles)



Main Route - Average Speed (MPH)

