

**USH 45: STH 145 TO CTH E (MILWAUKEE COUNTY)
OFF-PEAK DAY 2 LANE CLOSURE
NO DIVERSION ROUTE (MAX QUEUE METHOD)**

OCTOBER
Analyzed for 2009
Construction Season

SUMMARY OF TRAFFIC MODEL OUTPUT
FRIDAY SOUTHBOUND DIRECTION

TIME OF DAY	FLOWS AND CAPACITY IN VEH/HR						AVERAGE SPEEDS IN MPH			
	MAIN ROUTE		SITE CAPA CITY	FLOW		AV.DEL PER VEH (MINS)	AVERAGE QUEUE (VEH)	MAIN ROUTE		SITE
	DEMAND FLOW	PCT HEAVY		MAIN ROUTE	'DIVER TED'			WITHOUT WORK ZONE	WITH WORK ZONE	
MID-1 AM	390	0.0	OFF	390	0	0.00	0	70.2	70.2	70.2
1-2 AM	281	0.0	OFF	281	0	0.00	0	70.2	70.2	70.2
2-3 AM	283	0.0	OFF	283	0	0.00	0	70.2	70.2	70.2
3-4 AM	376	0.0	OFF	376	0	0.00	0	70.2	70.2	70.2
4-5 AM	738	0.0	OFF	738	0	0.00	0	69.8	69.8	69.8
5-6 AM	2034	0.0	OFF	2034	0	0.00	0	68.2	68.2	68.2
6-7 AM	4362	0.0	OFF	4362	0	0.00	0	61.0	61.0	61.0
7-8 AM	5340	0.0	OFF	5340	0	0.00	0	54.4	54.4	54.4
8-9 AM	4094	0.0	OFF	4094	0	0.00	0	62.9	62.9	62.9
9-10 AM	3440	0.0	OFF	3440	0	0.00	0	66.4	66.4	66.4
10-11 AM	3454	0.0	1499	1563	1890	16.88+	422	66.4	7.9	36.6
11AM-NOON	3594	0.0	1499	1718	1876	14.78+	385	66.3	8.8	35.6
NOON-1PM	3700	0.0	1499	1516	2184	16.45+	409	65.6	8.0	34.2
1-2 PM	3470	0.0	1500	1516	1954	16.53+	409	66.4	8.0	33.1
2-3 PM	4112	0.0	1499	1501	2611	16.47+	411	62.8	7.9	32.9
3-4 PM	4318	0.0	OFF	4318	0	0.38	29	61.4	52.5	52.5
4-5 PM	4506	0.0	OFF	4506	0	0.00	0	60.1	60.1	60.1
5-6 PM	4173	0.0	OFF	4173	0	0.00	0	62.3	62.3	62.3
6-7 PM	3246	0.0	OFF	3246	0	0.00	0	66.7	66.7	66.7
7-8 PM	2197	0.0	OFF	2197	0	0.00	0	68.0	68.0	68.0
8-9 PM	1555	0.0	OFF	1555	0	0.00	0	68.8	68.8	68.8
9-10 PM	1499	0.0	OFF	1499	0	0.00	0	68.9	68.9	68.9
10-11 PM	1233	0.0	OFF	1233	0	0.00	0	69.2	69.2	69.2
11PM-MID	1077	0.0	OFF	1077	0	0.00	0	69.4	69.4	69.4

"OFF" INDICATES NO ROAD WORK (ALL LANES OPEN TO TRAFFIC)

+ INDICATES QUEUEING EXCEEDS USER-SPECIFIED MAXIMUM LIMIT

----- SITE BREAKDOWN DELAYS -----	
BREAKDOWN DURATION (MINS)	0
RANGE OF QUEUE DELAY - MIN (VEH-H) MAX	0.0
AV BREAKDOWNS PER DAY	0.00
AV QUEUE DELAY/DAY (VEH-H)	0.0
AV TOTAL DELAY/DAY (VEH-H)	0.0

----- SITE ACCIDENT DELAYS -----	
BREAKDOWN DURATION (MINS)	0
RANGE OF QUEUE DELAY - MIN (VEH-H) MAX	0
AV BREAKDOWNS PER DAY	0
AV QUEUE DELAY/DAY (VEH-H)	0
AV TOTAL DELAY/DAY (VEH-H)	0

AVERAGE ACCIDENT NUMBERS (PIA/DAY)	
MAIN ROUTE WITHOUT WORKS	0.0232
MAIN ROUTE WITH WORKS	0.0189
'DIVERSION'	0.0089
PIA: Personal Injury Accidents	
IMPACTS ON ROAD USERS	
ROAD USER COSTS PER DAY	\$65,796
CONGESTED HOURS PER DAY*	5

*Delays Exceeding User-Specified Maximum

USH 45: STH 145 TO CTH E (MILWAUKEE COUNTY)
OFF-PEAK DAY 2 LANE CLOSURE
NO DIVERSION ROUTE (MAX QUEUE METHOD)

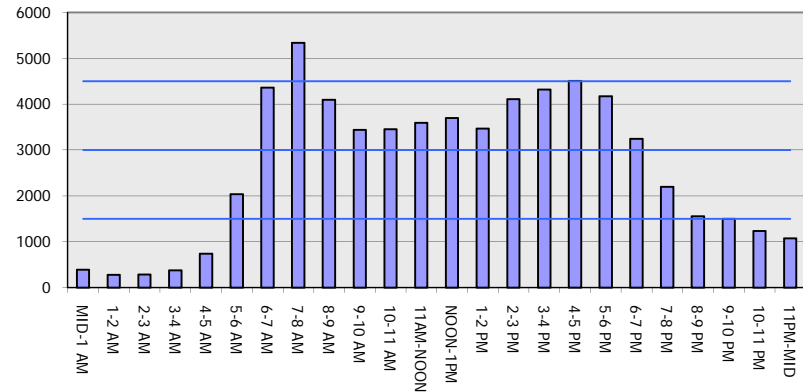
OCTOBER

Analyzed for 2009
 Construction Season

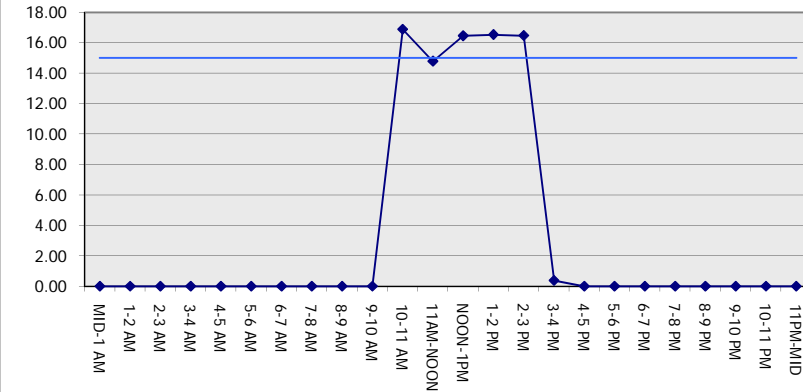
GRAPHICAL REPRESENTATION OF TRAFFIC MODEL INPUT AND OUTPUT

FRIDAY SOUTHBOUND DIRECTION

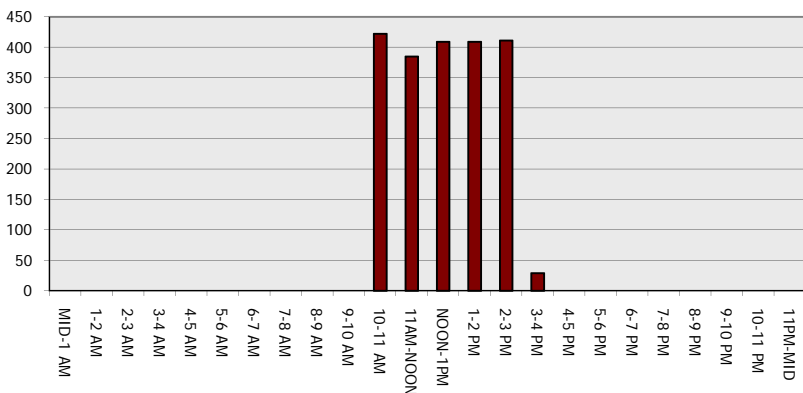
Main Route - Traffic Demand (Vehicles Per Hour)



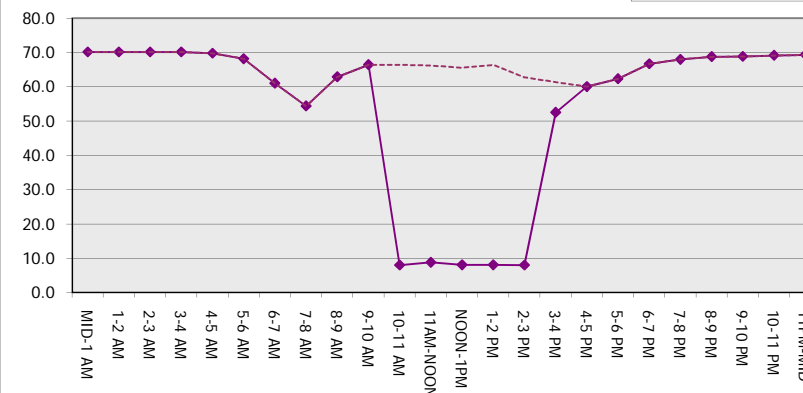
Main Route Average Delay Per Vehicle (Minutes)



Main Route - Average Queue Length (Vehicles)



Main Route - Average Speed (MPH)



USH 45: STH 145 TO CTH E (MILWAUKEE COUNTY) OFF-PEAK DAY 2 LANE CLOSURE NO DIVERSION ROUTE (MAX QUEUE METHOD)	OCTOBER
	Analyzed for 2009 Construction Season

SUMMARY OF TRAFFIC MODEL OUTPUT

FRIDAY NORTHBOUND DIRECTION

TIME OF DAY	FLOWS AND CAPACITY IN VEH/HR						AVERAGE SPEEDS IN MPH			
	MAIN ROUTE		SITE CAPA CITY	FLOW		AV.DEL PER VEH (MINS)	AVERAGE QUEUE (VEH)	MAIN ROUTE		SITE
	DEMAND FLOW	PCT HEAVY		MAIN ROUTE	'DIVER TED'			WITHOUT WORK ZONE	WITH WORK ZONE	
MID-1 AM	551	0.0	OFF	551	0	0.00	0	70.0	70.0	70.0
1-2 AM	355	0.0	OFF	355	0	0.00	0	70.2	70.2	70.2
2-3 AM	348	0.0	OFF	348	0	0.00	0	70.2	70.2	70.2
3-4 AM	399	0.0	OFF	399	0	0.00	0	70.2	70.2	70.2
4-5 AM	722	0.0	OFF	722	0	0.00	0	69.9	69.9	69.9
5-6 AM	1953	0.0	OFF	1953	0	0.00	0	68.3	68.3	68.3
6-7 AM	3566	0.0	OFF	3566	0	0.00	0	66.3	66.3	66.3
7-8 AM	4793	0.0	OFF	4793	0	0.00	0	58.1	58.1	58.1
8-9 AM	3894	0.0	OFF	3894	0	0.00	0	64.3	64.3	64.3
9-10 AM	3189	0.0	OFF	3189	0	0.00	0	66.8	66.8	66.8
10-11 AM	3234	0.0	1499	1563	1671	16.88+	422	66.7	7.9	36.6
11AM-NOON	3572	0.0	1499	1710	1862	14.76+	385	66.3	8.8	35.6
NOON-1PM	3977	0.0	1499	1514	2462	16.35+	409	63.7	8.0	34.9
1-2 PM	4195	0.0	1500	1506	2689	16.35+	410	62.2	8.0	34.3
2-3 PM	4880	0.0	1499	1500	3380	16.17+	411	57.5	8.0	34.4
3-4 PM	5704	0.0	OFF	5704	0	1.56	145	51.9	32.7	32.7
4-5 PM	6294	0.0	OFF	6294	0	0.00	0	47.9	47.9	47.9
5-6 PM	5737	0.0	OFF	5737	0	0.00	0	51.7	51.7	51.7
6-7 PM	4006	0.0	OFF	4006	0	0.00	0	63.5	63.5	63.5
7-8 PM	2702	0.0	OFF	2702	0	0.00	0	67.4	67.4	67.4
8-9 PM	2215	0.0	OFF	2215	0	0.00	0	68.0	68.0	68.0
9-10 PM	2209	0.0	OFF	2209	0	0.00	0	68.0	68.0	68.0
10-11 PM	1720	0.0	OFF	1720	0	0.00	0	68.6	68.6	68.6
11PM-MID	1205	0.0	OFF	1205	0	0.00	0	69.2	69.2	69.2

"OFF" INDICATES NO ROAD WORK (ALL LANES OPEN TO TRAFFIC)

+ INDICATES QUEUEING EXCEEDS USER-SPECIFIED MAXIMUM LIMIT

----- SITE BREAKDOWN DELAYS -----	
BREAKDOWN DURATION (MINS)	0
RANGE OF QUEUE DELAY - MIN (VEH-H) MAX	0.0
AV BREAKDOWNS PER DAY	0.00
AV QUEUE DELAY/DAY (VEH-H)	0.0
AV TOTAL DELAY/DAY (VEH-H)	0.0

----- SITE ACCIDENT DELAYS -----	
BREAKDOWN DURATION (MINS)	0
RANGE OF QUEUE DELAY - MIN (VEH-H) MAX	0
AV BREAKDOWNS PER DAY	0
AV QUEUE DELAY/DAY (VEH-H)	0
AV TOTAL DELAY/DAY (VEH-H)	0

AVERAGE ACCIDENT NUMBERS (PIA/DAY)	
MAIN ROUTE WITHOUT WORKS	0.0261
MAIN ROUTE WITH WORKS	0.0212
'DIVERSION'	0.0102

PIA: Personal Injury Accidents

ECONOMIC IMPACT ON ROAD USERS	
ROAD USER COSTS PER DAY	\$72,335
CONGESTED HOURS PER DAY*	5

*Delays Exceeding User-Specified Maximum

**USH 45: STH 145 TO CTH E (MILWAUKEE COUNTY)
OFF-PEAK DAY 2 LANE CLOSURE
NO DIVERSION ROUTE (MAX QUEUE METHOD)**

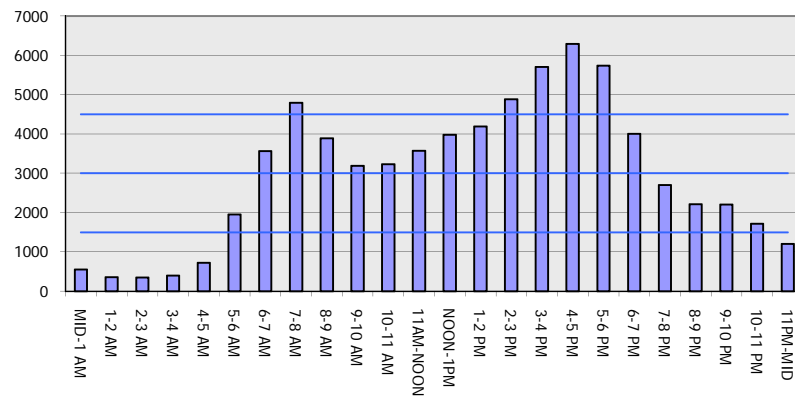
OCTOBER

Analyzed for 2009
Construction Season

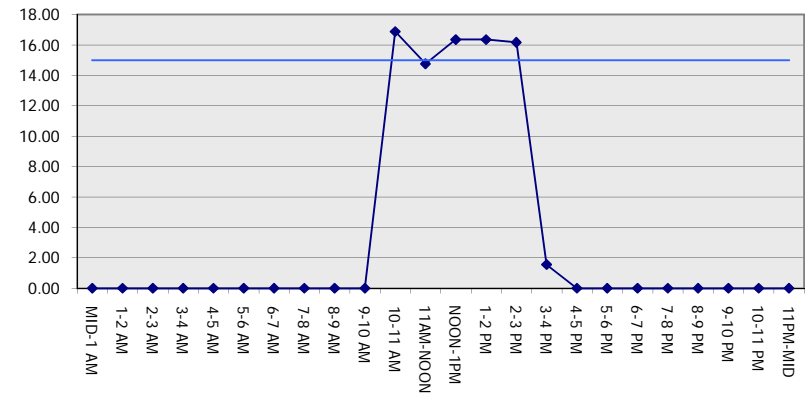
GRAPHICAL REPRESENTATION OF TRAFFIC MODEL INPUT AND OUTPUT

FRIDAY NORTHBOUND DIRECTION

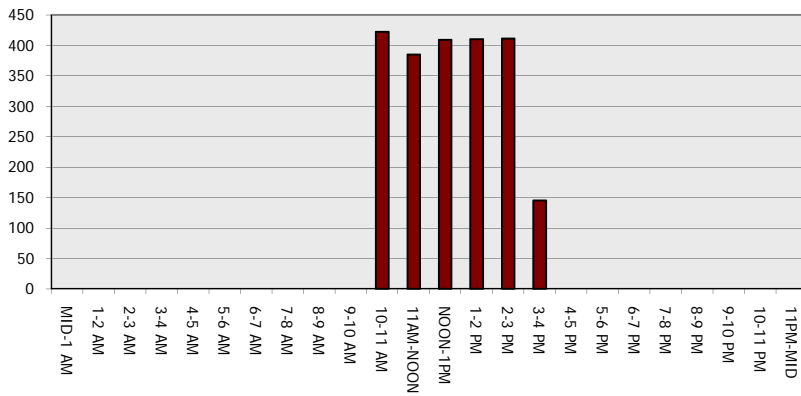
Main Route - Traffic Demand (Vehicles Per Hour)



Main Route Average Delay Per Vehicle (Minutes)



Main Route - Average Queue Length (Vehicles)



Main Route - Average Speed (MPH)

