

USH 45: STH 145 TO CTH E (MILWAUKEE COUNTY) OFF-PEAK DAY 2 LANE CLOSURE NO DIVERSION ROUTE (MAX QUEUE METHOD)	AUGUST
	Analyzed for 2009 Construction Season

SUMMARY OF TRAFFIC MODEL OUTPUT

SUNDAY SOUTHBOUND DIRECTION

TIME OF DAY	FLOWS AND CAPACITY IN VEH/HR						AVERAGE SPEEDS IN MPH				
	MAIN ROUTE		SITE CAPA CITY	FLOW		AV.DEL PER VEH (MINS)	AVERAGE QUEUE (VEH)	MAIN ROUTE		SITE	
	DEMAND FLOW	PCT HEAVY		MAIN ROUTE	'DIVER TED'			WITHOUT WORK ZONE	WITH WORK ZONE		
MID-1 AM	686	0.0	OFF	686	0	0.00	0	69.9	69.9	69.9	
1-2 AM	450	0.0	OFF	450	0	0.00	0	70.2	70.2	70.2	
2-3 AM	281	0.0	OFF	281	0	0.00	0	70.2	70.2	70.2	
3-4 AM	202	0.0	OFF	202	0	0.00	0	70.2	70.2	70.2	
4-5 AM	226	0.0	OFF	226	0	0.00	0	70.2	70.2	70.2	
5-6 AM	346	0.0	OFF	346	0	0.00	0	70.2	70.2	70.2	
6-7 AM	694	0.0	OFF	694	0	0.00	0	69.9	69.9	69.9	
7-8 AM	857	0.0	OFF	857	0	0.00	0	69.7	69.7	69.7	
8-9 AM	1330	0.0	OFF	1330	0	0.00	0	69.1	69.1	69.1	
9-10 AM	2089	0.0	1499	2022	66	7.63+	229	68.1	14.7	30.8	
10-11 AM	3002	0.0	1500	1467	1535	16.58+	408	67.0	7.9	31.9	
11AM-NOON	3686	0.0	1499	1491	2195	16.67+	410	65.7	7.9	30.8	
NOON-1PM	3609	0.0	1499	1492	2117	16.69+	410	66.2	7.9	30.8	
1-2 PM	3215	0.0	1499	1485	1730	16.68+	409	66.8	7.9	30.8	
2-3 PM	3481	0.0	1499	1496	1985	16.71+	410	66.4	7.9	30.8	
3-4 PM	3330	0.0	1499	1493	1837	16.70+	410	66.6	7.9	30.8	
4-5 PM	3213	0.0	1499	1492	1720	16.70+	410	66.8	7.9	30.8	
5-6 PM	3011	0.0	1499	1490	1521	16.70+	410	67.0	7.9	30.8	
6-7 PM	2843	0.0	1499	1492	1351	16.66+	408	67.2	7.9	30.8	
7-8 PM	2408	0.0	OFF	2408	0	0.26	24	67.8	60.0	60.0	
8-9 PM	2027	0.0	OFF	2027	0	0.00	0	68.2	68.2	68.2	
9-10 PM	1466	0.0	OFF	1466	0	0.00	0	68.9	68.9	68.9	
10-11 PM	975	0.0	OFF	975	0	0.00	0	69.6	69.6	69.6	
11PM-MID	566	0.0	OFF	566	0	0.00	0	70.0	70.0	70.0	

"OFF" INDICATES NO ROAD WORK (ALL LANES OPEN TO TRAFFIC)

+ INDICATES QUEUEING EXCEEDS USER-SPECIFIED MAXIMUM LIMIT

----- SITE BREAKDOWN DELAYS -----	
BREAKDOWN DURATION (MINS)	0
RANGE OF QUEUE DELAY - MIN (VEH-H) MAX	0.0
AV BREAKDOWNS PER DAY	0.00
AV QUEUE DELAY/DAY (VEH-H)	0.0
AV TOTAL DELAY/DAY (VEH-H)	0.0

----- SITE ACCIDENT DELAYS -----	
BREAKDOWN DURATION (MINS)	0
RANGE OF QUEUE DELAY - MIN (VEH-H) MAX	0
AV BREAKDOWNS PER DAY	0
AV QUEUE DELAY/DAY (VEH-H)	0
AV TOTAL DELAY/DAY (VEH-H)	0

AVERAGE ACCIDENT NUMBERS (PIA/DAY)	
MAIN ROUTE WITHOUT WORKS	0.0161
MAIN ROUTE WITH WORKS	0.0092
'DIVERSION'	0.0136
PIA: Personal Injury Accidents	
IMPACTS ON ROAD USERS	
ROAD USER COSTS PER DAY	\$140,994
CONGESTED HOURS PER DAY*	10

*Delays Exceeding User-Specified Maximum

USH 45: STH 145 TO CTH E (MILWAUKEE COUNTY)
OFF-PEAK DAY 2 LANE CLOSURE
NO DIVERSION ROUTE (MAX QUEUE METHOD)

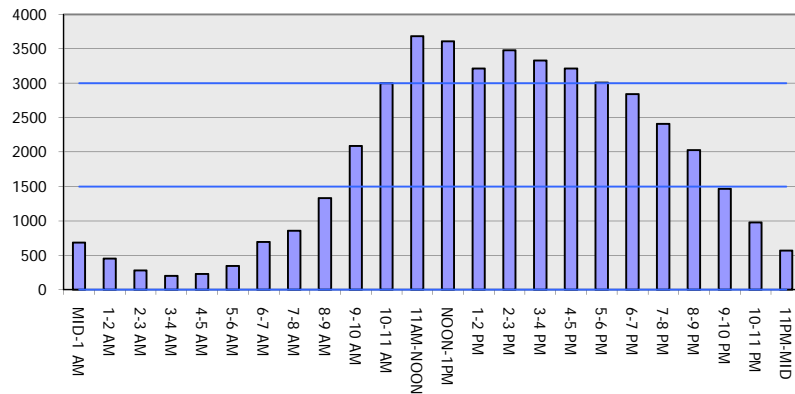
AUGUST

Analyzed for 2009
 Construction Season

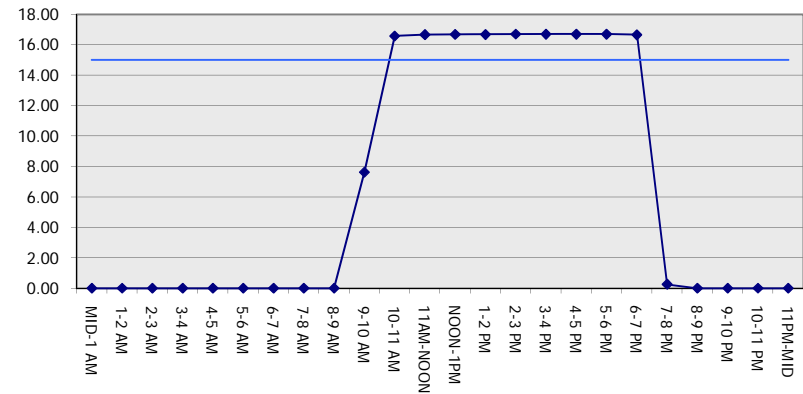
GRAPHICAL REPRESENTATION OF TRAFFIC MODEL INPUT AND OUTPUT

SUNDAY SOUTHBOUND DIRECTION

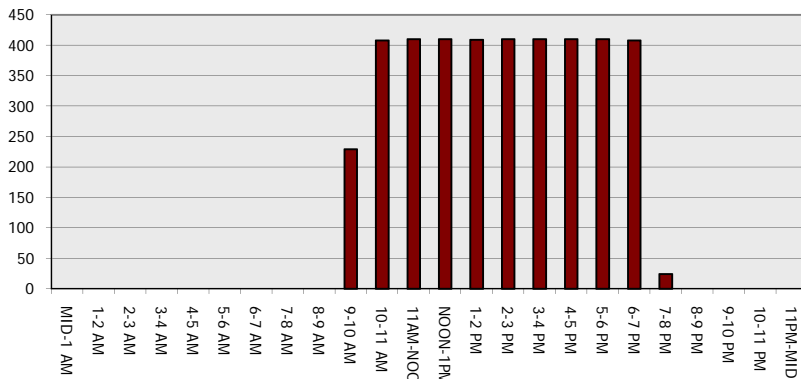
Main Route - Traffic Demand (Vehicles Per Hour)



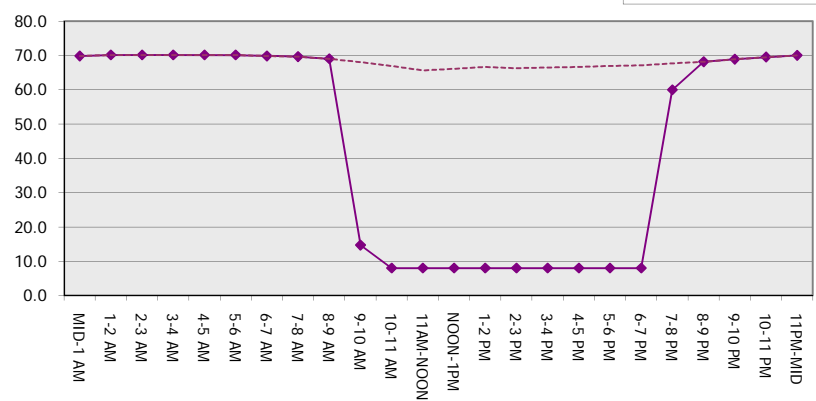
Main Route Average Delay Per Vehicle (Minutes)



Main Route - Average Queue Length (Vehicles)



Main Route - Average Speed (MPH)



USH 45: STH 145 TO CTH E (MILWAUKEE COUNTY) OFF-PEAK DAY 2 LANE CLOSURE NO DIVERSION ROUTE (MAX QUEUE METHOD)	AUGUST
	Analyzed for 2009 Construction Season

SUMMARY OF TRAFFIC MODEL OUTPUT

SUNDAY NORTHBOUND DIRECTION

TIME OF DAY	FLOWS AND CAPACITY IN VEH/HR							AVERAGE SPEEDS IN MPH		
	MAIN ROUTE		SITE CAPA CITY	FLOW		AV.DEL PER VEH (MINS)	AVERAGE QUEUE (VEH)	MAIN ROUTE		SITE
	DEMAND FLOW	PCT HEAVY		MAIN ROUTE	'DIVER TED'			WITHOUT WORK ZONE	WITH WORK ZONE	
MID-1 AM	856	0.0	OFF	856	0	0.00	0	69.7	69.7	69.7
1-2 AM	521	0.0	OFF	521	0	0.00	0	70.1	70.1	70.1
2-3 AM	399	0.0	OFF	399	0	0.00	0	70.2	70.2	70.2
3-4 AM	222	0.0	OFF	222	0	0.00	0	70.2	70.2	70.2
4-5 AM	182	0.0	OFF	182	0	0.00	0	70.2	70.2	70.2
5-6 AM	319	0.0	OFF	319	0	0.00	0	70.2	70.2	70.2
6-7 AM	535	0.0	OFF	535	0	0.00	0	70.0	70.0	70.0
7-8 AM	817	0.0	OFF	817	0	0.00	0	69.7	69.7	69.7
8-9 AM	1149	0.0	OFF	1149	0	0.00	0	69.3	69.3	69.3
9-10 AM	1613	0.0	1499	1613	0	1.91	29	68.7	35.3	30.9
10-11 AM	2107	0.0	1500	1756	352	12.73+	325	68.1	9.7	30.8
11AM-NOON	2393	0.0	1500	1503	890	16.62+	407	67.8	7.9	30.8
NOON-1PM	2699	0.0	1500	1509	1190	16.65+	408	67.4	7.9	30.8
1-2 PM	2870	0.0	1500	1509	1361	16.67+	409	67.2	7.9	30.8
2-3 PM	2918	0.0	1500	1506	1412	16.68+	409	67.1	7.9	30.8
3-4 PM	3117	0.0	1500	1503	1614	16.72+	410	66.9	7.9	30.8
4-5 PM	3294	0.0	1500	1500	1794	16.73+	411	66.6	7.9	30.8
5-6 PM	3230	0.0	1500	1501	1729	16.73+	411	66.7	7.9	30.8
6-7 PM	2598	0.0	1500	1501	1097	16.62+	407	67.5	7.9	30.8
7-8 PM	2137	0.0	OFF	2137	0	0.23	21	68.1	61.2	61.2
8-9 PM	1794	0.0	OFF	1794	0	0.00	0	68.5	68.5	68.5
9-10 PM	1545	0.0	OFF	1545	0	0.00	0	68.8	68.8	68.8
10-11 PM	1322	0.0	OFF	1322	0	0.00	0	69.1	69.1	69.1
11PM-MID	746	0.0	OFF	746	0	0.00	0	69.8	69.8	69.8

"OFF" INDICATES NO ROAD WORK (ALL LANES OPEN TO TRAFFIC)

+ INDICATES QUEUEING EXCEEDS USER-SPECIFIED MAXIMUM LIMIT

----- SITE BREAKDOWN DELAYS -----	
BREAKDOWN DURATION (MINS)	0
RANGE OF QUEUE DELAY - MIN (VEH-H) MAX	0.0
AV BREAKDOWNS PER DAY	0.00
AV QUEUE DELAY/DAY (VEH-H)	0.0
AV TOTAL DELAY/DAY (VEH-H)	0.0

----- SITE ACCIDENT DELAYS -----	
BREAKDOWN DURATION (MINS)	0
RANGE OF QUEUE DELAY - MIN (VEH-H) MAX	0
AV BREAKDOWNS PER DAY	0
AV QUEUE DELAY/DAY (VEH-H)	0
AV TOTAL DELAY/DAY (VEH-H)	0

AVERAGE ACCIDENT NUMBERS (PIA/DAY)	
MAIN ROUTE WITHOUT WORKS	0.0144
MAIN ROUTE WITH WORKS	0.0092
'DIVERSION'	0.0097

PIA: Personal Injury Accidents

ECONOMIC IMPACT ON ROAD USERS	
ROAD USER COSTS PER DAY	\$115,766
CONGESTED HOURS PER DAY*	9

*Delays Exceeding User-Specified Maximum

**USH 45: STH 145 TO CTH E (MILWAUKEE COUNTY)
OFF-PEAK DAY 2 LANE CLOSURE
NO DIVERSION ROUTE (MAX QUEUE METHOD)**

AUGUST
Analyzed for 2009
Construction Season

GRAPHICAL REPRESENTATION OF TRAFFIC MODEL INPUT AND OUTPUT
SUNDAY NORTHBOUND DIRECTION

