

<b>USH 45: STH 145 TO CTH E (MILWAUKEE COUNTY)</b> <b>OFF-PEAK DAY 2 LANE CLOSURE</b> <b>NO DIVERSION ROUTE (MAX QUEUE METHOD)</b>	<b>AUGUST</b>
	Analyzed for 2009 Construction Season

**SUMMARY OF TRAFFIC MODEL OUTPUT**

FRIDAY      SOUTHBOUND DIRECTION

TIME OF DAY	FLOWS AND CAPACITY IN VEH/HR						AVERAGE SPEEDS IN MPH				
	MAIN ROUTE		SITE CAPA CITY	FLOW		AV.DEL PER VEH (MINS)	AVERAGE QUEUE (VEH)	MAIN ROUTE		SITE	
	DEMAND FLOW	PCT HEAVY		MAIN ROUTE	'DIVER TED'			WITHOUT WORK ZONE	WITH WORK ZONE		
MID-1 AM	484	0.0	OFF	484	0	0.00	0	70.1	70.1	70.1	
1-2 AM	330	0.0	OFF	330	0	0.00	0	70.2	70.2	70.2	
2-3 AM	290	0.0	OFF	290	0	0.00	0	70.2	70.2	70.2	
3-4 AM	397	0.0	OFF	397	0	0.00	0	70.2	70.2	70.2	
4-5 AM	752	0.0	OFF	752	0	0.00	0	69.8	69.8	69.8	
5-6 AM	2041	0.0	OFF	2041	0	0.00	0	68.2	68.2	68.2	
6-7 AM	4167	0.0	OFF	4167	0	0.00	0	62.4	62.4	62.4	
7-8 AM	5370	0.0	OFF	5370	0	0.00	0	54.2	54.2	54.2	
8-9 AM	4359	0.0	OFF	4359	0	0.00	0	61.0	61.0	61.0	
9-10 AM	3628	0.0	OFF	3628	0	0.00	0	66.1	66.1	66.1	
10-11 AM	3551	0.0	1499	1564	1988	16.88+	422	66.3	7.9	36.6	
11AM-NOON	3748	0.0	1499	1743	2005	14.81+	385	65.3	8.7	35.5	
NOON-1PM	3640	0.0	1499	1513	2127	16.55+	409	66.0	7.9	32.6	
1-2 PM	3243	0.0	1500	1516	1727	16.62+	409	66.7	7.9	31.6	
2-3 PM	3955	0.0	1499	1501	2454	16.59+	411	63.8	7.9	31.4	
3-4 PM	4680	0.0	OFF	4680	0	0.53	42	58.9	48.1	48.1	
4-5 PM	4317	0.0	OFF	4317	0	0.00	0	61.4	61.4	61.4	
5-6 PM	3991	0.0	OFF	3991	0	0.00	0	63.6	63.6	63.6	
6-7 PM	2984	0.0	OFF	2984	0	0.00	0	67.0	67.0	67.0	
7-8 PM	2147	0.0	OFF	2147	0	0.00	0	68.1	68.1	68.1	
8-9 PM	1756	0.0	OFF	1756	0	0.00	0	68.6	68.6	68.6	
9-10 PM	1588	0.0	OFF	1588	0	0.00	0	68.7	68.7	68.7	
10-11 PM	1307	0.0	OFF	1307	0	0.00	0	69.1	69.1	69.1	
11PM-MID	1164	0.0	OFF	1164	0	0.00	0	69.3	69.3	69.3	

"OFF" INDICATES NO ROAD WORK (ALL LANES OPEN TO TRAFFIC)

+ INDICATES QUEUEING EXCEEDS USER-SPECIFIED MAXIMUM LIMIT

*----- SITE BREAKDOWN DELAYS -----*	
BREAKDOWN DURATION (MINS)	0
RANGE OF QUEUE DELAY - MIN (VEH-H) MAX	0.0
AV BREAKDOWNS PER DAY	0.00
AV QUEUE DELAY/DAY (VEH-H)	0.0
AV TOTAL DELAY/DAY (VEH-H)	0.0

*----- SITE ACCIDENT DELAYS -----*	
BREAKDOWN DURATION (MINS)	0
RANGE OF QUEUE DELAY - MIN (VEH-H) MAX	0
AV BREAKDOWNS PER DAY	0
AV QUEUE DELAY/DAY (VEH-H)	0
AV TOTAL DELAY/DAY (VEH-H)	0

AVERAGE ACCIDENT NUMBERS (PIA/DAY)	
MAIN ROUTE WITHOUT WORKS	0.0234
MAIN ROUTE WITH WORKS	0.0191
'DIVERSION'	0.0087
<small>PIA: Personal Injury Accidents</small>	
IMPACTS ON ROAD USERS	
ROAD USER COSTS PER DAY	\$64,995
CONGESTED HOURS PER DAY*	5

\*Delays Exceeding User-Specified Maximum

**USH 45: STH 145 TO CTH E (MILWAUKEE COUNTY)**  
**OFF-PEAK DAY 2 LANE CLOSURE**  
**NO DIVERSION ROUTE (MAX QUEUE METHOD)**

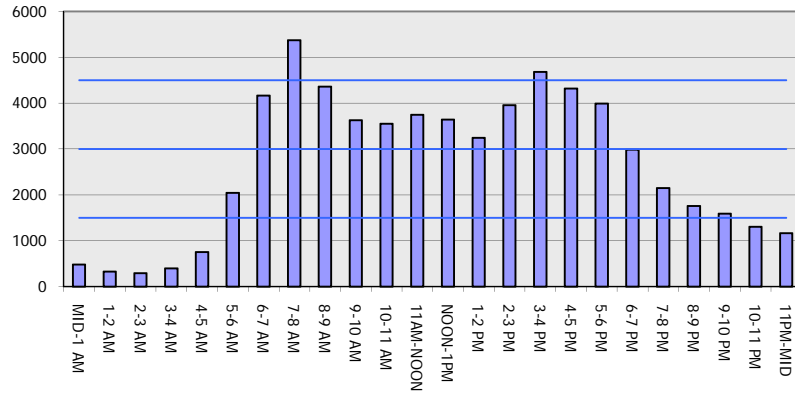
**AUGUST**

Analyzed for 2009  
 Construction Season

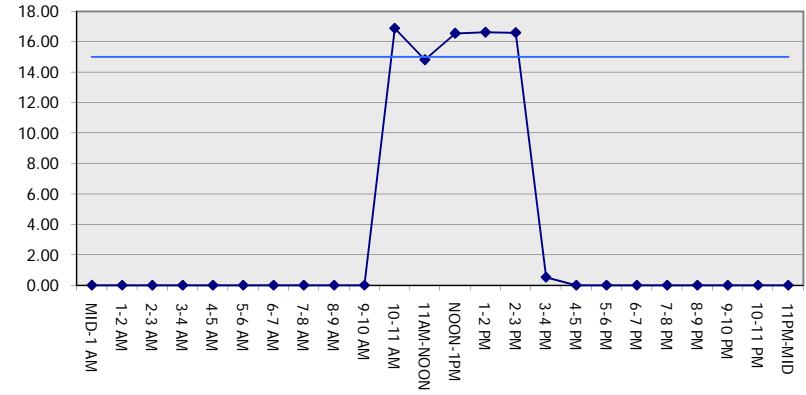
**GRAPHICAL REPRESENTATION OF TRAFFIC MODEL INPUT AND OUTPUT**

**FRIDAY SOUTHBOUND DIRECTION**

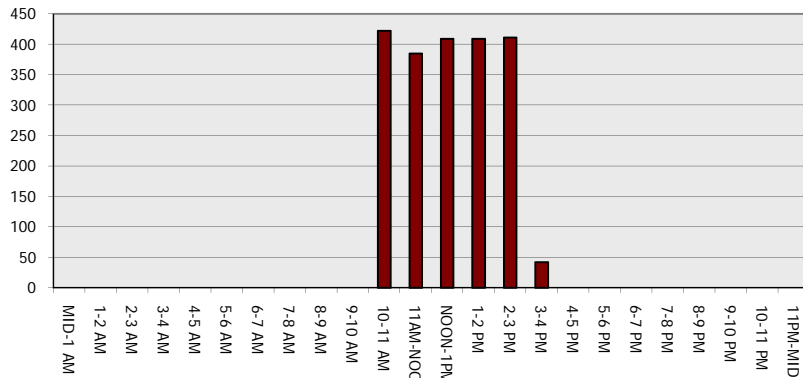
**Main Route - Traffic Demand (Vehicles Per Hour)**



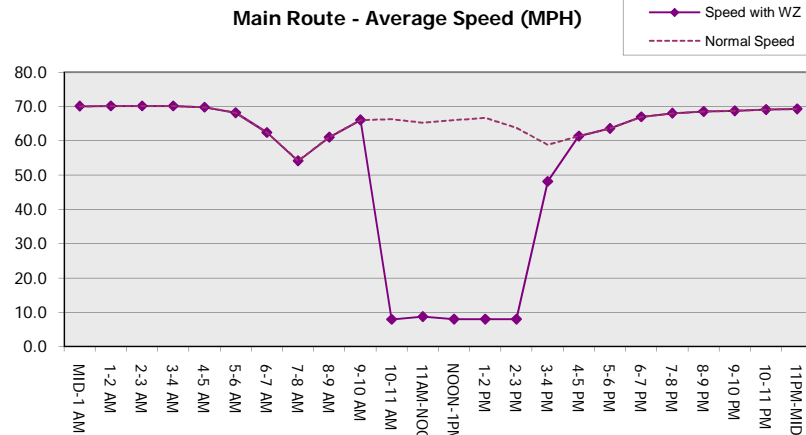
**Main Route Average Delay Per Vehicle (Minutes)**



**Main Route - Average Queue Length (Vehicles)**



**Main Route - Average Speed (MPH)**



<b>USH 45: STH 145 TO CTH E (MILWAUKEE COUNTY)</b> <b>OFF-PEAK DAY 2 LANE CLOSURE</b> <b>NO DIVERSION ROUTE (MAX QUEUE METHOD)</b>	<b>AUGUST</b>
	Analyzed for 2009 Construction Season

**SUMMARY OF TRAFFIC MODEL OUTPUT**

FRIDAY NORTHBOUND DIRECTION

TIME OF DAY	FLOWS AND CAPACITY IN VEH/HR						AVERAGE SPEEDS IN MPH			
	MAIN ROUTE		SITE CAPA CITY	FLOW		AV.DEL PER VEH (MINS)	AVERAGE QUEUE (VEH)	MAIN ROUTE		SITE
	DEMAND FLOW	PCT HEAVY		MAIN ROUTE	'DIVER TED'			WITHOUT WORK ZONE	WITH WORK ZONE	
MID-1 AM	643	0.0	OFF	643	0	0.00	0	69.9	69.9	69.9
1-2 AM	415	0.0	OFF	415	0	0.00	0	70.2	70.2	70.2
2-3 AM	367	0.0	OFF	367	0	0.00	0	70.2	70.2	70.2
3-4 AM	367	0.0	OFF	367	0	0.00	0	70.2	70.2	70.2
4-5 AM	659	0.0	OFF	659	0	0.00	0	69.9	69.9	69.9
5-6 AM	1933	0.0	OFF	1933	0	0.00	0	68.3	68.3	68.3
6-7 AM	3578	0.0	OFF	3578	0	0.00	0	66.3	66.3	66.3
7-8 AM	4621	0.0	OFF	4621	0	0.00	0	59.3	59.3	59.3
8-9 AM	3893	0.0	OFF	3893	0	0.00	0	64.3	64.3	64.3
9-10 AM	3261	0.0	OFF	3261	0	0.00	0	66.7	66.7	66.7
10-11 AM	3435	0.0	1499	1563	1872	16.88+	422	66.4	7.9	36.6
11AM-NOON	3772	0.0	1499	1743	2028	14.80+	385	65.1	8.7	35.5
NOON-1PM	4209	0.0	1499	1501	2709	16.41+	411	62.1	8.0	33.4
1-2 PM	4403	0.0	1500	1500	2903	16.36+	411	60.8	8.0	33.4
2-3 PM	5186	0.0	1500	1500	3686	16.13+	411	55.5	8.0	33.4
3-4 PM	5716	0.0	OFF	5716	0	1.76	165	51.8	31.2	31.2
4-5 PM	6077	0.0	OFF	6077	0	0.59	61	49.4	40.7	40.7
5-6 PM	5733	0.0	OFF	5733	0	0.22	18	51.7	47.7	47.7
6-7 PM	4090	0.0	OFF	4090	0	0.00	0	62.9	62.9	62.9
7-8 PM	2892	0.0	OFF	2892	0	0.00	0	67.1	67.1	67.1
8-9 PM	2409	0.0	OFF	2409	0	0.00	0	67.8	67.8	67.8
9-10 PM	2404	0.0	OFF	2404	0	0.00	0	67.8	67.8	67.8
10-11 PM	2358	0.0	OFF	2358	0	0.00	0	67.8	67.8	67.8
11PM-MID	1540	0.0	OFF	1540	0	0.00	0	68.8	68.8	68.8

"OFF" INDICATES NO ROAD WORK (ALL LANES OPEN TO TRAFFIC)

+ INDICATES QUEUEING EXCEEDS USER-SPECIFIED MAXIMUM LIMIT

*----- SITE BREAKDOWN DELAYS -----*	
BREAKDOWN DURATION (MINS)	0
RANGE OF QUEUE DELAY - MIN (VEH-H) MAX	0.0
AV BREAKDOWNS PER DAY	0.00
AV QUEUE DELAY/DAY (VEH-H)	0.0
AV TOTAL DELAY/DAY (VEH-H)	0.0

*----- SITE ACCIDENT DELAYS -----*	
BREAKDOWN DURATION (MINS)	0
RANGE OF QUEUE DELAY - MIN (VEH-H) MAX	0
AV BREAKDOWNS PER DAY	0
AV QUEUE DELAY/DAY (VEH-H)	0
AV TOTAL DELAY/DAY (VEH-H)	0

AVERAGE ACCIDENT NUMBERS (PIA/DAY)	
MAIN ROUTE WITHOUT WORKS	0.0271
MAIN ROUTE WITH WORKS	0.0217
'DIVERSION'	0.0112

PIA: Personal Injury Accidents

ECONOMIC IMPACT ON ROAD USERS	
ROAD USER COSTS PER DAY	\$77,175
CONGESTED HOURS PER DAY*	5

\*Delays Exceeding User-Specified Maximum

**USH 45: STH 145 TO CTH E (MILWAUKEE COUNTY)  
OFF-PEAK DAY 2 LANE CLOSURE  
NO DIVERSION ROUTE (MAX QUEUE METHOD)**

**AUGUST**  
Analyzed for 2009  
Construction Season

**GRAPHICAL REPRESENTATION OF TRAFFIC MODEL INPUT AND OUTPUT**  
**FRIDAY NORTHBOUND DIRECTION**

