

IH 43: CTH Y TO HALE INTERCHANGE (WAUKESHA AND MILWAUKEE COUNTIES) OFF-PEAK DAY CLOSURE NO DIVERSION ROUTE (MAX QUEUE METHOD)	OCTOBER
	Analyzed for 2009 Construction Season

SUMMARY OF TRAFFIC MODEL OUTPUT

SUNDAY SOUTHBOUND DIRECTION

TIME OF DAY	FLOWS AND CAPACITY IN VEH/HR						AVERAGE SPEEDS IN MPH				
	MAIN ROUTE		SITE CAPA CITY	FLOW		AV.DEL PER VEH (MINS)	AVERAGE QUEUE (VEH)	MAIN ROUTE		SITE	
	DEMAND FLOW	PCT HEAVY		MAIN ROUTE	'DIVER TED'			WITHOUT WORK ZONE	WITH WORK ZONE		
MID-1 AM	415	0.0	OFF	415	0	0.00	0	65.6	65.6	65.6	
1-2 AM	263	0.0	OFF	263	0	0.00	0	65.9	65.9	65.9	
2-3 AM	206	0.0	OFF	206	0	0.00	0	66.0	66.0	66.0	
3-4 AM	127	0.0	OFF	127	0	0.00	0	66.1	66.1	66.1	
4-5 AM	98	0.0	OFF	98	0	0.00	0	66.2	66.2	66.2	
5-6 AM	198	0.0	OFF	198	0	0.00	0	66.0	66.0	66.0	
6-7 AM	292	0.0	OFF	292	0	0.00	0	65.8	65.8	65.8	
7-8 AM	500	0.0	OFF	500	0	0.00	0	65.5	65.5	65.5	
8-9 AM	646	0.0	OFF	646	0	0.00	0	65.2	65.2	65.2	
9-10 AM	1001	0.0	1500	1001	0	0.52	0	64.5	59.6	41.7	
10-11 AM	1193	0.0	1499	1193	0	0.63	0	64.1	58.3	38.8	
11AM-NOON	1612	0.0	1499	1612	0	2.35	39	63.4	46.2	30.8	
NOON-1PM	1723	0.0	1500	1723	0	8.84	220	63.2	26.5	30.8	
1-2 PM	1736	0.0	1499	1571	165	15.50+	392	63.2	18.4	30.8	
2-3 PM	1564	0.0	1500	1500	64	15.84+	400	63.5	18.1	30.8	
3-4 PM	1725	0.0	1500	1500	225	15.81+	400	63.2	18.1	30.8	
4-5 PM	1710	0.0	1500	1500	210	15.81+	400	63.2	18.1	30.8	
5-6 PM	1571	0.0	1500	1493	78	15.81+	399	63.5	18.1	30.8	
6-7 PM	1393	0.0	1499	1393	0	14.19+	356	63.8	19.6	30.8	
7-8 PM	1247	0.0	OFF	1247	0	0.29	15	64.1	61.2	61.2	
8-9 PM	912	0.0	OFF	912	0	0.00	0	64.7	64.7	64.7	
9-10 PM	668	0.0	OFF	668	0	0.00	0	65.1	65.1	65.1	
10-11 PM	435	0.0	OFF	435	0	0.00	0	65.6	65.6	65.6	
11PM-MID	279	0.0	OFF	279	0	0.00	0	65.9	65.9	65.9	

"OFF" INDICATES NO ROAD WORK (ALL LANES OPEN TO TRAFFIC)

+ INDICATES QUEUEING EXCEEDS USER-SPECIFIED MAXIMUM LIMIT

----- SITE BREAKDOWN DELAYS -----	
BREAKDOWN DURATION (MINS)	0
RANGE OF QUEUE DELAY - MIN (VEH-H) MAX	0.0
AV BREAKDOWNS PER DAY	0.00
AV QUEUE DELAY/DAY (VEH-H)	0.0
AV TOTAL DELAY/DAY (VEH-H)	0.0

----- SITE ACCIDENT DELAYS -----	
BREAKDOWN DURATION (MINS)	0
RANGE OF QUEUE DELAY - MIN (VEH-H) MAX	0
AV BREAKDOWNS PER DAY	0
AV QUEUE DELAY/DAY (VEH-H)	0
AV TOTAL DELAY/DAY (VEH-H)	0

AVERAGE ACCIDENT NUMBERS (PIA/DAY)	
MAIN ROUTE WITHOUT WORKS	0.0229
MAIN ROUTE WITH WORKS	0.0212
'DIVERSION'	0.0018
PIA: Personal Injury Accidents	
IMPACTS ON ROAD USERS	
ROAD USER COSTS PER DAY	\$45,807
CONGESTED HOURS PER DAY*	6

*Delays Exceeding User-Specified Maximum

IH 43: CTH Y TO HALE INTERCHANGE (WAUKESHA AND MILWAUKEE COUNTIES)
OFF-PEAK DAY CLOSURE
NO DIVERSION ROUTE (MAX QUEUE METHOD)

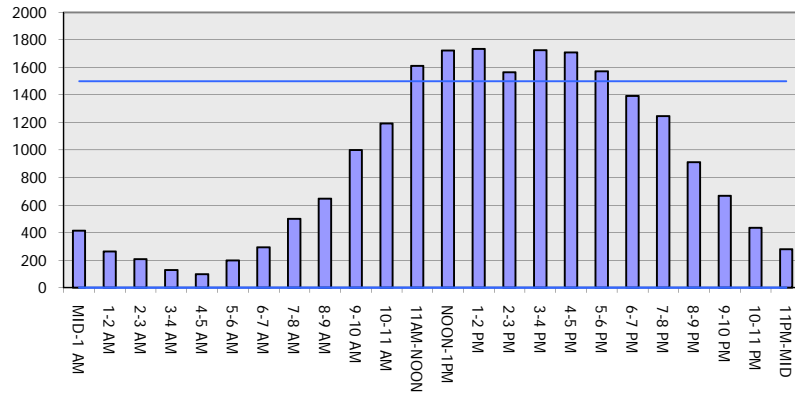
OCTOBER

Analyzed for 2009
 Construction Season

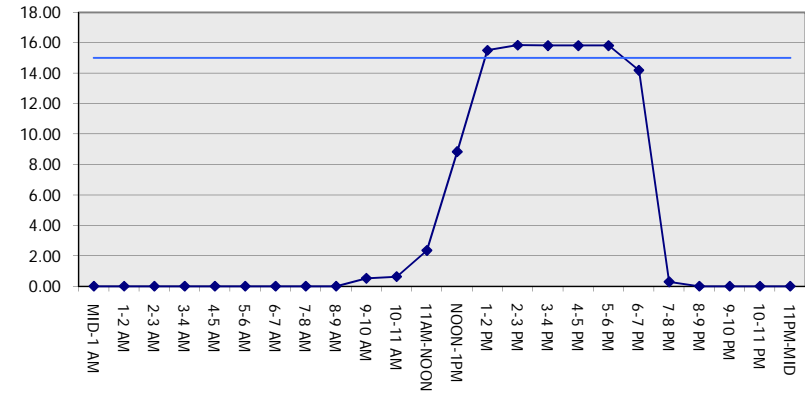
GRAPHICAL REPRESENTATION OF TRAFFIC MODEL INPUT AND OUTPUT

SUNDAY SOUTHBOUND DIRECTION

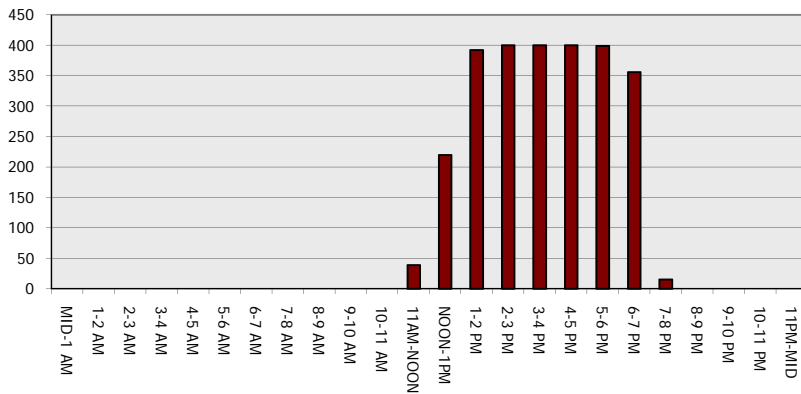
Main Route - Traffic Demand (Vehicles Per Hour)



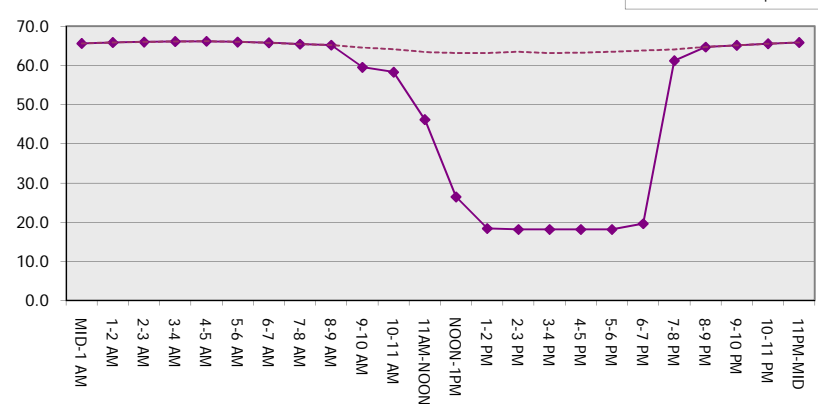
Main Route Average Delay Per Vehicle (Minutes)



Main Route - Average Queue Length (Vehicles)



Main Route - Average Speed (MPH)



IH 43: CTH Y TO HALE INTERCHANGE (WAUKESHA AND MILWAUKEE COUNTIES) OFF-PEAK DAY CLOSURE NO DIVERSION ROUTE (MAX QUEUE METHOD)	OCTOBER
	Analyzed for 2009 Construction Season

SUMMARY OF TRAFFIC MODEL OUTPUT

SUNDAY NORTHBOUND DIRECTION

TIME OF DAY	FLOWS AND CAPACITY IN VEH/HR						AVERAGE SPEEDS IN MPH			
	MAIN ROUTE		SITE CAPA CITY	FLOW		AV.DEL PER VEH (MINS)	AVERAGE QUEUE (VEH)	MAIN ROUTE		SITE
	DEMAND FLOW	PCT HEAVY		MAIN ROUTE	'DIVER TED'			WITHOUT WORK ZONE	WITH WORK ZONE	
MID-1 AM	526	0.0	OFF	526	0	0.00	0	65.4	65.4	65.4
1-2 AM	313	0.0	OFF	313	0	0.00	0	65.8	65.8	65.8
2-3 AM	171	0.0	OFF	171	0	0.00	0	66.1	66.1	66.1
3-4 AM	128	0.0	OFF	128	0	0.00	0	66.1	66.1	66.1
4-5 AM	152	0.0	OFF	152	0	0.00	0	66.1	66.1	66.1
5-6 AM	277	0.0	OFF	277	0	0.00	0	65.9	65.9	65.9
6-7 AM	426	0.0	OFF	426	0	0.00	0	65.6	65.6	65.6
7-8 AM	538	0.0	OFF	538	0	0.00	0	65.4	65.4	65.4
8-9 AM	785	0.0	OFF	785	0	0.00	0	64.9	64.9	64.9
9-10 AM	1023	0.0	1500	1023	0	0.52	0	64.5	59.5	41.6
10-11 AM	1240	0.0	1499	1240	0	0.69	0	64.1	57.8	37.3
11AM-NOON	1510	0.0	1499	1510	0	1.21	5	63.6	53.3	31.1
NOON-1PM	1529	0.0	1499	1529	0	2.50	40	63.5	45.5	30.8
1-2 PM	1419	0.0	1499	1419	0	1.56	17	63.7	51.1	31.9
2-3 PM	1477	0.0	1499	1477	0	1.00	0	63.7	55.0	31.2
3-4 PM	1559	0.0	1499	1559	0	1.90	24	63.5	48.8	30.8
4-5 PM	1626	0.0	1500	1626	0	5.27	118	63.3	34.6	30.8
5-6 PM	1675	0.0	1500	1675	0	11.01	274	63.3	23.2	30.8
6-7 PM	1557	0.0	1499	1534	23	15.49+	390	63.5	18.4	30.8
7-8 PM	1350	0.0	OFF	1350	0	0.51	29	63.9	59.1	59.1
8-9 PM	940	0.0	OFF	940	0	0.00	0	64.6	64.6	64.6
9-10 PM	775	0.0	OFF	775	0	0.00	0	65.0	65.0	65.0
10-11 PM	505	0.0	OFF	505	0	0.00	0	65.5	65.5	65.5
11PM-MID	289	0.0	OFF	289	0	0.00	0	65.8	65.8	65.8

"OFF" INDICATES NO ROAD WORK (ALL LANES OPEN TO TRAFFIC)

+ INDICATES QUEUEING EXCEEDS USER-SPECIFIED MAXIMUM LIMIT

----- SITE BREAKDOWN DELAYS -----	
BREAKDOWN DURATION (MINS)	0
RANGE OF QUEUE DELAY - MIN (VEH-H) MAX	0.0
AV BREAKDOWNS PER DAY	0.00
AV QUEUE DELAY/DAY (VEH-H)	0.0
AV TOTAL DELAY/DAY (VEH-H)	0.0

----- SITE ACCIDENT DELAYS -----	
BREAKDOWN DURATION (MINS)	0
RANGE OF QUEUE DELAY - MIN (VEH-H) MAX	0
AV BREAKDOWNS PER DAY	0
AV QUEUE DELAY/DAY (VEH-H)	0
AV TOTAL DELAY/DAY (VEH-H)	0

AVERAGE ACCIDENT NUMBERS (PIA/DAY)	
MAIN ROUTE WITHOUT WORKS	0.0232
MAIN ROUTE WITH WORKS	0.0222
'DIVERSION'	0.0001

PIA: Personal Injury Accidents

ECONOMIC IMPACT ON ROAD USERS	
ROAD USER COSTS PER DAY	\$17,523
CONGESTED HOURS PER DAY*	1

*Delays Exceeding User-Specified Maximum

IH 43: CTH Y TO HALE INTERCHANGE (WAUKESHA AND MILWAUKEE COUNTIES)
OFF-PEAK DAY CLOSURE
NO DIVERSION ROUTE (MAX QUEUE METHOD)

OCTOBER

Analyzed for 2009
 Construction Season

GRAPHICAL REPRESENTATION OF TRAFFIC MODEL INPUT AND OUTPUT
SUNDAY NORTHBOUND DIRECTION

