

IH 43: CTH Y TO HALE INTERCHANGE (WAUKESHA AND MILWAUKEE COUNTIES) OFF-PEAK DAY CLOSURE NO DIVERSION ROUTE (MAX QUEUE METHOD)	OCTOBER
	Analyzed for 2009 Construction Season

SUMMARY OF TRAFFIC MODEL OUTPUT

MON-THUR SOUTHBOUND DIRECTION

TIME OF DAY	FLOWS AND CAPACITY IN VEH/HR						AVERAGE SPEEDS IN MPH			
	MAIN ROUTE		SITE CAPA CITY	FLOW		AV.DEL PER VEH (MINS)	AVERAGE QUEUE (VEH)	MAIN ROUTE		SITE
	DEMAND FLOW	PCT HEAVY		MAIN ROUTE	'DIVER TED'			WITHOUT WORK ZONE	WITH WORK ZONE	
MID-1 AM	242	0.0	OFF	242	0	0.00	0	66.0	66.0	66.0
1-2 AM	135	0.0	OFF	135	0	0.00	0	66.1	66.1	66.1
2-3 AM	117	0.0	OFF	117	0	0.00	0	66.1	66.1	66.1
3-4 AM	133	0.0	OFF	133	0	0.00	0	66.1	66.1	66.1
4-5 AM	331	0.0	OFF	331	0	0.00	0	65.8	65.8	65.8
5-6 AM	812	0.0	OFF	812	0	0.00	0	64.9	64.9	64.9
6-7 AM	1646	0.0	OFF	1646	0	0.00	0	63.3	63.3	63.3
7-8 AM	2203	0.0	OFF	2203	0	0.00	0	62.3	62.3	62.3
8-9 AM	1704	0.0	OFF	1704	0	0.00	0	63.2	63.2	63.2
9-10 AM	1190	0.0	OFF	1190	0	0.00	0	64.1	64.1	64.1
10-11 AM	1158	0.0	1500	1158	0	0.58	0	64.2	58.7	39.8
11AM-NOON	1226	0.0	1500	1226	0	0.67	0	64.1	57.9	37.6
NOON-1PM	1306	0.0	1500	1306	0	0.77	0	64.0	56.9	35.3
1-2 PM	1414	0.0	1499	1414	0	0.91	0	63.8	55.7	32.7
2-3 PM	1871	0.0	1499	1871	0	5.58	150	62.9	33.5	30.8
3-4 PM	2531	0.0	OFF	2531	0	1.15	46	60.5	51.7	51.7
4-5 PM	2675	0.0	OFF	2675	0	0.00	0	59.1	59.1	59.1
5-6 PM	2671	0.0	OFF	2671	0	0.00	0	59.1	59.1	59.1
6-7 PM	2020	0.0	OFF	2020	0	0.00	0	62.6	62.6	62.6
7-8 PM	1268	0.0	OFF	1268	0	0.00	0	64.0	64.0	64.0
8-9 PM	1054	0.0	OFF	1054	0	0.00	0	64.4	64.4	64.4
9-10 PM	881	0.0	OFF	881	0	0.00	0	64.8	64.8	64.8
10-11 PM	581	0.0	OFF	581	0	0.00	0	65.3	65.3	65.3
11PM-MID	413	0.0	OFF	413	0	0.00	0	65.6	65.6	65.6

"OFF" INDICATES NO ROAD WORK (ALL LANES OPEN TO TRAFFIC)

----- SITE BREAKDOWN DELAYS -----	
BREAKDOWN DURATION (MINS)	0
RANGE OF QUEUE DELAY - MIN (VEH-H) MAX	0.0
AV BREAKDOWNS PER DAY	0.00
AV QUEUE DELAY/DAY (VEH-H)	0.0
AV TOTAL DELAY/DAY (VEH-H)	0.0

----- SITE ACCIDENT DELAYS -----	
BREAKDOWN DURATION (MINS)	0
RANGE OF QUEUE DELAY - MIN (VEH-H) MAX	0
AV BREAKDOWNS PER DAY	0
AV QUEUE DELAY/DAY (VEH-H)	0
AV TOTAL DELAY/DAY (VEH-H)	0

AVERAGE ACCIDENT NUMBERS (PIA/DAY)	
MAIN ROUTE WITHOUT WORKS	0.0315
MAIN ROUTE WITH WORKS	0.0311
'DIVERSION'	0.0000
PIA: Personal Injury Accidents	
IMPACTS ON ROAD USERS	
ROAD USER COSTS PER DAY	\$2,723
CONGESTED HOURS PER DAY*	0

*Delays Exceeding User-Specified Maximum

IH 43: CTH Y TO HALE INTERCHANGE (WAUKESHA AND MILWAUKEE COUNTIES)
OFF-PEAK DAY CLOSURE
NO DIVERSION ROUTE (MAX QUEUE METHOD)

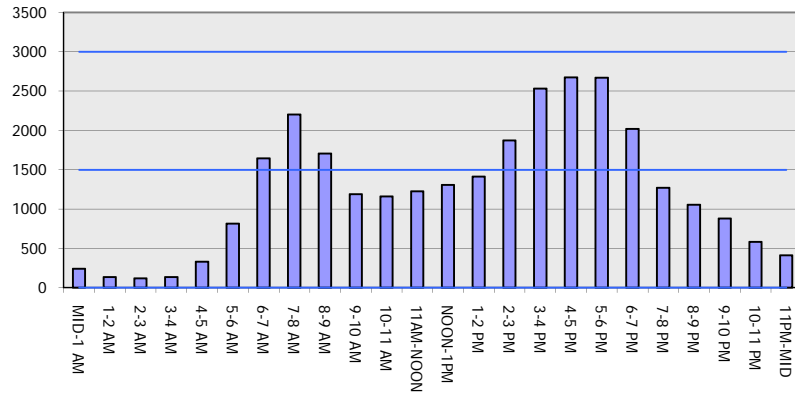
OCTOBER

Analyzed for 2009
 Construction Season

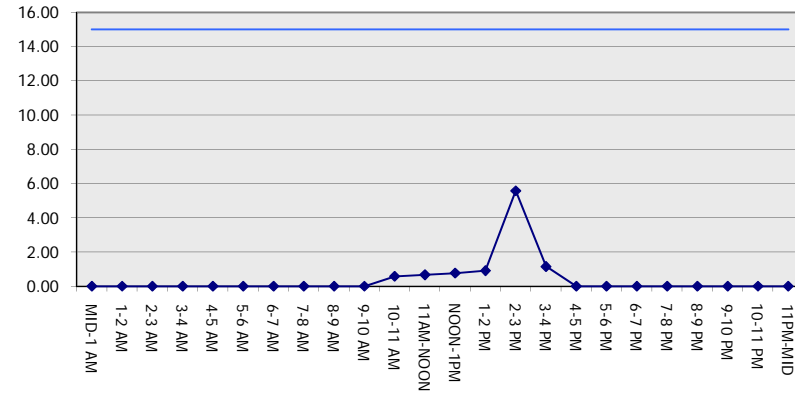
GRAPHICAL REPRESENTATION OF TRAFFIC MODEL INPUT AND OUTPUT

MON-THUR SOUTHBOUND DIRECTION

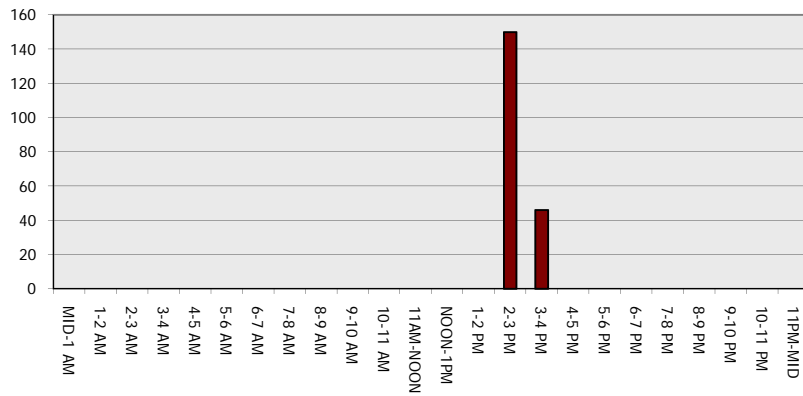
Main Route - Traffic Demand (Vehicles Per Hour)



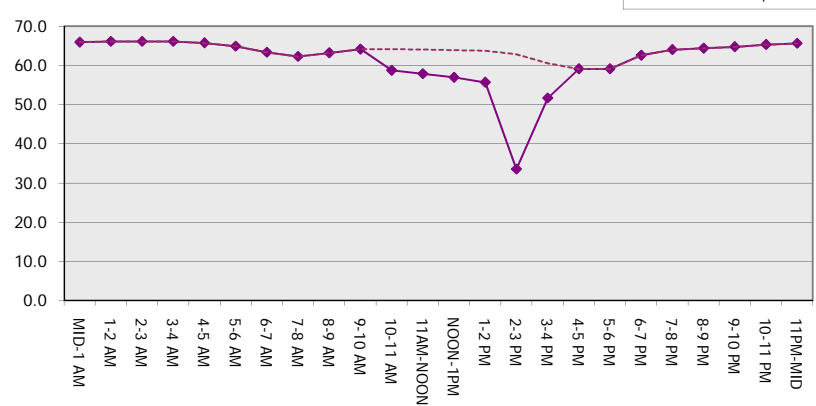
Main Route Average Delay Per Vehicle (Minutes)



Main Route - Average Queue Length (Vehicles)



Main Route - Average Speed (MPH)



IH 43: CTH Y TO HALE INTERCHANGE (WAUKESHA AND MILWAUKEE COUNTIES) OFF-PEAK DAY CLOSURE NO DIVERSION ROUTE (MAX QUEUE METHOD)	OCTOBER
	Analyzed for 2009 Construction Season

SUMMARY OF TRAFFIC MODEL OUTPUT

MON-THUR NORTHBOUND DIRECTION

TIME OF DAY	FLOWS AND CAPACITY IN VEH/HR						AVERAGE SPEEDS IN MPH			
	MAIN ROUTE		SITE CAPA CITY	FLOW		AV.DEL PER VEH (MINS)	AVERAGE QUEUE (VEH)	MAIN ROUTE		SITE
	DEMAND FLOW	PCT HEAVY		MAIN ROUTE	'DIVER TED'			WITHOUT WORK ZONE	WITH WORK ZONE	
MID-1 AM	218	0.0	OFF	218	0	0.00	0	66.0	66.0	66.0
1-2 AM	146	0.0	OFF	146	0	0.00	0	66.1	66.1	66.1
2-3 AM	127	0.0	OFF	127	0	0.00	0	66.1	66.1	66.1
3-4 AM	187	0.0	OFF	187	0	0.00	0	66.0	66.0	66.0
4-5 AM	452	0.0	OFF	452	0	0.00	0	65.5	65.5	65.5
5-6 AM	1542	0.0	OFF	1542	0	0.00	0	63.5	63.5	63.5
6-7 AM	2944	0.0	OFF	2944	0	0.00	0	56.3	56.3	56.3
7-8 AM	3002	0.0	OFF	3002	0	0.00	0	55.8	55.8	55.8
8-9 AM	2273	0.0	OFF	2273	0	0.00	0	62.2	62.2	62.2
9-10 AM	1702	0.0	OFF	1702	0	0.00	0	63.2	63.2	63.2
10-11 AM	1347	0.0	1500	1347	0	0.83	0	63.9	56.4	34.3
11AM-NOON	1396	0.0	1500	1396	0	0.89	0	63.8	55.9	33.1
NOON-1PM	1377	0.0	1500	1377	0	0.87	0	63.8	56.1	33.5
1-2 PM	1430	0.0	1499	1430	0	0.93	0	63.7	55.5	32.3
2-3 PM	1565	0.0	1499	1565	0	1.61	17	63.5	50.6	30.8
3-4 PM	1926	0.0	OFF	1926	0	0.03	1	62.8	62.5	62.5
4-5 PM	2150	0.0	OFF	2150	0	0.00	0	62.3	62.3	62.3
5-6 PM	2261	0.0	OFF	2261	0	0.00	0	62.2	62.2	62.2
6-7 PM	1533	0.0	OFF	1533	0	0.00	0	63.5	63.5	63.5
7-8 PM	949	0.0	OFF	949	0	0.00	0	64.6	64.6	64.6
8-9 PM	769	0.0	OFF	769	0	0.00	0	65.0	65.0	65.0
9-10 PM	664	0.0	OFF	664	0	0.00	0	65.1	65.1	65.1
10-11 PM	539	0.0	OFF	539	0	0.00	0	65.4	65.4	65.4
11PM-MID	318	0.0	OFF	318	0	0.00	0	65.8	65.8	65.8

"OFF" INDICATES NO ROAD WORK (ALL LANES OPEN TO TRAFFIC)

----- SITE BREAKDOWN DELAYS -----	
BREAKDOWN DURATION (MINS)	0
RANGE OF QUEUE DELAY - MIN (VEH-H) MAX	0.0
AV BREAKDOWNS PER DAY	0.00
AV QUEUE DELAY/DAY (VEH-H)	0.0
AV TOTAL DELAY/DAY (VEH-H)	0.0

----- SITE ACCIDENT DELAYS -----	
BREAKDOWN DURATION (MINS)	0
RANGE OF QUEUE DELAY - MIN (VEH-H) MAX	0
AV BREAKDOWNS PER DAY	0
AV QUEUE DELAY/DAY (VEH-H)	0
AV TOTAL DELAY/DAY (VEH-H)	0

AVERAGE ACCIDENT NUMBERS (PIA/DAY)	
MAIN ROUTE WITHOUT WORKS	0.0329
MAIN ROUTE WITH WORKS	0.0324
'DIVERSION'	0.0000

PIA: Personal Injury Accidents

ECONOMIC IMPACT ON ROAD USERS	
ROAD USER COSTS PER DAY	\$1,186
CONGESTED HOURS PER DAY*	0

*Delays Exceeding User-Specified Maximum

IH 43: CTH Y TO HALE INTERCHANGE (WAUKESHA AND MILWAUKEE COUNTIES)
OFF-PEAK DAY CLOSURE
NO DIVERSION ROUTE (MAX QUEUE METHOD)

OCTOBER

Analyzed for 2009
 Construction Season

GRAPHICAL REPRESENTATION OF TRAFFIC MODEL INPUT AND OUTPUT
MON-THUR NORTHBOUND DIRECTION

