

USH 45: STH 190 TO NORTH AVE (MILWAUKEE COUNTY) OFF-PEAK DAY CLOSURE NO DIVERSION ROUTE (MAX QUEUE METHOD)	OCTOBER
	Analyzed for 2009 Construction Season

SUMMARY OF TRAFFIC MODEL OUTPUT

SUNDAY SOUTHBOUND DIRECTION

TIME OF DAY	FLOWS AND CAPACITY IN VEH/HR						AVERAGE SPEEDS IN MPH				
	MAIN ROUTE		SITE CAPA CITY	FLOW		AV.DEL PER VEH (MINS)	AVERAGE QUEUE (VEH)	MAIN ROUTE		SITE	
	DEMAND FLOW	PCT HEAVY		MAIN ROUTE	'DIVER TED'			WITHOUT WORK ZONE	WITH WORK ZONE		
MID-1 AM	843	0.0	OFF	843	0	0.00	0	69.7	69.7	69.7	
1-2 AM	473	0.0	OFF	473	0	0.00	0	70.2	70.2	70.2	
2-3 AM	429	0.0	OFF	429	0	0.00	0	70.2	70.2	70.2	
3-4 AM	307	0.0	OFF	307	0	0.00	0	70.2	70.2	70.2	
4-5 AM	279	0.0	OFF	279	0	0.00	0	70.2	70.2	70.2	
5-6 AM	487	0.0	OFF	487	0	0.00	0	70.1	70.1	70.1	
6-7 AM	907	0.0	OFF	907	0	0.00	0	69.6	69.6	69.6	
7-8 AM	1158	0.0	OFF	1158	0	0.00	0	69.3	69.3	69.3	
8-9 AM	1706	0.0	OFF	1706	0	0.00	0	68.6	68.6	68.6	
9-10 AM	2589	0.0	1999	2589	0	6.62	247	67.5	15.6	27.9	
10-11 AM	3221	0.0	1999	1986	1235	17.26+	568	66.8	8.3	27.9	
11AM-NOON	3822	0.0	1999	2001	1821	17.51+	580	64.8	8.3	27.9	
NOON-1PM	4438	0.0	1999	2000	2438	17.34+	580	60.5	8.3	27.9	
1-2 PM	4493	0.0	2000	2000	2493	17.32+	580	60.2	8.3	27.9	
2-3 PM	4698	0.0	2000	2000	2698	17.26+	580	58.7	8.3	27.9	
3-4 PM	4446	0.0	1999	2000	2446	17.34+	580	60.5	8.3	27.9	
4-5 PM	4159	0.0	1999	2000	2159	17.42+	580	62.4	8.3	27.9	
5-6 PM	4034	0.0	2000	2000	2034	17.46+	580	63.3	8.3	27.9	
6-7 PM	3803	0.0	2000	2000	1802	17.52+	580	64.9	8.3	27.9	
7-8 PM	3010	0.0	OFF	3010	0	0.58	55	67.0	51.3	51.3	
8-9 PM	2282	0.0	OFF	2282	0	0.00	0	67.9	67.9	67.9	
9-10 PM	1641	0.0	OFF	1641	0	0.00	0	68.7	68.7	68.7	
10-11 PM	1078	0.0	OFF	1078	0	0.00	0	69.4	69.4	69.4	
11PM-MID	663	0.0	OFF	663	0	0.00	0	69.9	69.9	69.9	

"OFF" INDICATES NO ROAD WORK (ALL LANES OPEN TO TRAFFIC)

+ INDICATES QUEUEING EXCEEDS USER-SPECIFIED MAXIMUM LIMIT

----- SITE BREAKDOWN DELAYS -----	
BREAKDOWN DURATION (MINS)	0
RANGE OF QUEUE DELAY - MIN (VEH-H) MAX	0.0
AV BREAKDOWNS PER DAY	0.00
AV QUEUE DELAY/DAY (VEH-H)	0.0
AV TOTAL DELAY/DAY (VEH-H)	0.0

----- SITE ACCIDENT DELAYS -----	
BREAKDOWN DURATION (MINS)	0
RANGE OF QUEUE DELAY - MIN (VEH-H) MAX	0
AV BREAKDOWNS PER DAY	0
AV QUEUE DELAY/DAY (VEH-H)	0
AV TOTAL DELAY/DAY (VEH-H)	0

AVERAGE ACCIDENT NUMBERS (PIA/DAY)	
MAIN ROUTE WITHOUT WORKS	0.0184
MAIN ROUTE WITH WORKS	0.0106
'DIVERSION'	0.0148
PIA: Personal Injury Accidents	
IMPACTS ON ROAD USERS	
ROAD USER COSTS PER DAY	\$184,854
CONGESTED HOURS PER DAY*	9

*Delays Exceeding User-Specified Maximum

**USH 45: STH 190 TO NORTH AVE (MILWAUKEE COUNTY)
OFF-PEAK DAY CLOSURE
NO DIVERSION ROUTE (MAX QUEUE METHOD)**

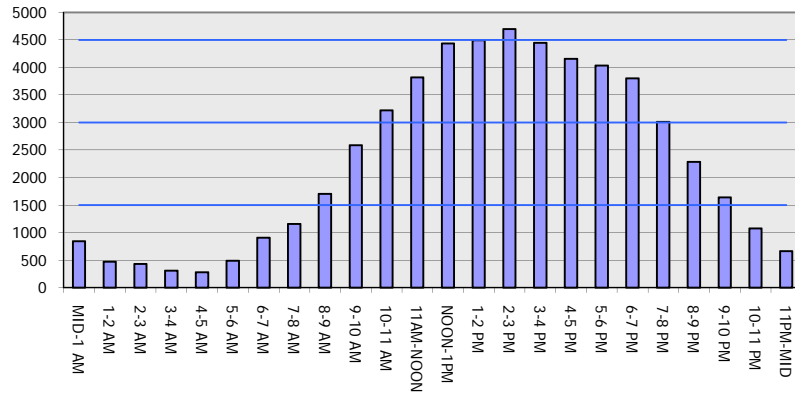
OCTOBER

Analyzed for 2009
Construction Season

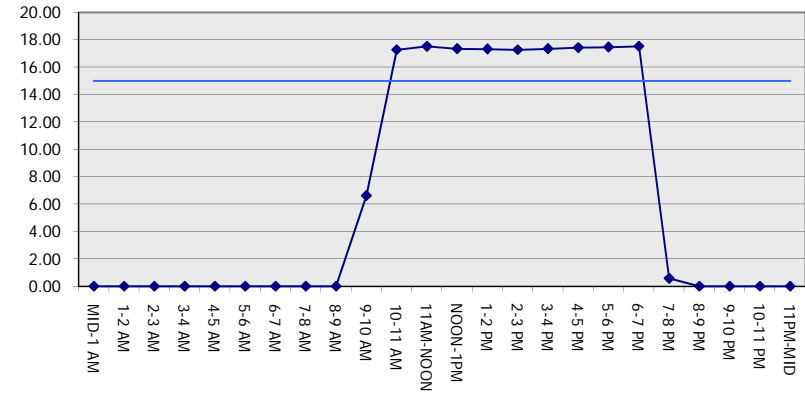
GRAPHICAL REPRESENTATION OF TRAFFIC MODEL INPUT AND OUTPUT

SUNDAY SOUTHBOUND DIRECTION

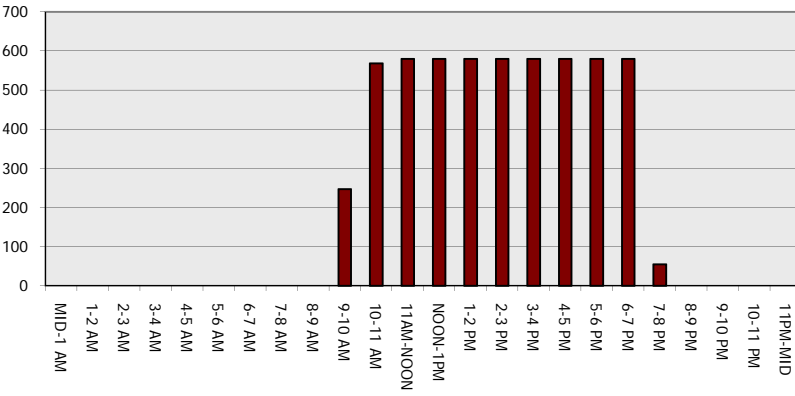
Main Route - Traffic Demand (Vehicles Per Hour)



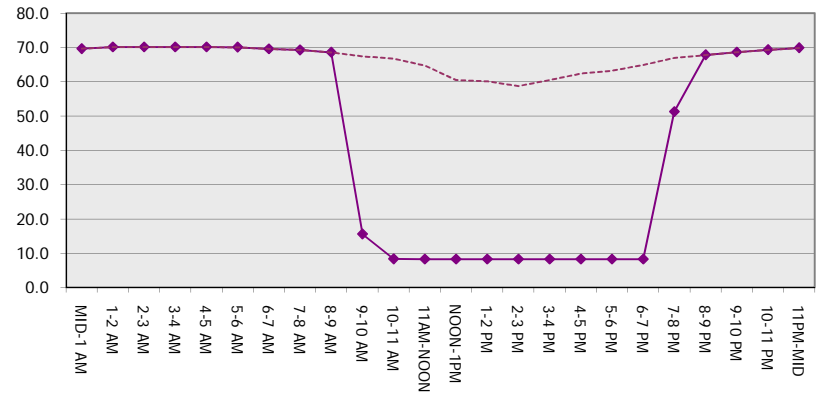
Main Route Average Delay Per Vehicle (Minutes)



Main Route - Average Queue Length (Vehicles)



Main Route - Average Speed (MPH)



USH 45: STH 190 TO NORTH AVE (MILWAUKEE COUNTY) OFF-PEAK DAY CLOSURE NO DIVERSION ROUTE (MAX QUEUE METHOD)	OCTOBER
	Analyzed for 2009 Construction Season

SUMMARY OF TRAFFIC MODEL OUTPUT

SUNDAY NORTHBOUND DIRECTION

TIME OF DAY	FLOWS AND CAPACITY IN VEH/HR							AVERAGE SPEEDS IN MPH		
	MAIN ROUTE		SITE CAPA CITY	FLOW		AV.DEL PER VEH (MINS)	AVERAGE QUEUE (VEH)	MAIN ROUTE		SITE
	DEMAND FLOW	PCT HEAVY		MAIN ROUTE	'DIVER TED'			WITHOUT WORK ZONE	WITH WORK ZONE	
MID-1 AM	1280	0.0	OFF	1280	0	0.00	0	69.1	69.1	69.1
1-2 AM	827	0.0	OFF	827	0	0.00	0	69.7	69.7	69.7
2-3 AM	827	0.0	OFF	827	0	0.00	0	69.7	69.7	69.7
3-4 AM	560	0.0	OFF	560	0	0.00	0	70.0	70.0	70.0
4-5 AM	548	0.0	OFF	548	0	0.00	0	70.0	70.0	70.0
5-6 AM	738	0.0	OFF	738	0	0.00	0	69.8	69.8	69.8
6-7 AM	1017	0.0	OFF	1017	0	0.00	0	69.5	69.5	69.5
7-8 AM	1299	0.0	OFF	1299	0	0.00	0	69.1	69.1	69.1
8-9 AM	1799	0.0	OFF	1799	0	0.00	0	68.5	68.5	68.5
9-10 AM	2514	0.0	1999	2514	0	6.02	217	67.6	16.5	27.9
10-11 AM	3073	0.0	1999	2032	1041	17.20+	566	66.9	8.3	27.9
11AM-NOON	3394	0.0	2000	2024	1371	17.33+	571	66.5	8.3	27.9
NOON-1PM	3889	0.0	1999	2000	1889	17.50+	580	64.3	8.3	27.9
1-2 PM	3876	0.0	2000	2000	1876	17.50+	580	64.4	8.3	27.9
2-3 PM	3915	0.0	2000	2000	1914	17.49+	580	64.1	8.3	27.9
3-4 PM	4242	0.0	2000	2000	2242	17.40+	580	61.9	8.3	27.9
4-5 PM	3919	0.0	2000	2000	1919	17.49+	580	64.1	8.3	27.9
5-6 PM	3907	0.0	2000	2000	1907	17.49+	580	64.1	8.3	27.9
6-7 PM	3180	0.0	2000	1998	1182	17.20+	566	66.8	8.3	27.9
7-8 PM	2952	0.0	OFF	2952	0	0.55	53	67.1	51.9	51.9
8-9 PM	2235	0.0	OFF	2235	0	0.00	0	67.9	67.9	67.9
9-10 PM	1967	0.0	OFF	1967	0	0.00	0	68.3	68.3	68.3
10-11 PM	1566	0.0	OFF	1566	0	0.00	0	68.8	68.8	68.8
11PM-MID	1073	0.0	OFF	1073	0	0.00	0	69.4	69.4	69.4

"OFF" INDICATES NO ROAD WORK (ALL LANES OPEN TO TRAFFIC)

+ INDICATES QUEUEING EXCEEDS USER-SPECIFIED MAXIMUM LIMIT

BREAKDOWN DURATION (MINS)	0
RANGE OF QUEUE DELAY - MIN (VEH-H) MAX	0.0
AV BREAKDOWNS PER DAY	0.00
AV QUEUE DELAY/DAY (VEH-H)	0.0
AV TOTAL DELAY/DAY (VEH-H)	0.0

BREAKDOWN DURATION (MINS)	0
RANGE OF QUEUE DELAY - MIN (VEH-H) MAX	0
AV BREAKDOWNS PER DAY	0
AV QUEUE DELAY/DAY (VEH-H)	0
AV TOTAL DELAY/DAY (VEH-H)	0

MAIN ROUTE WITHOUT WORKS	0.0182
MAIN ROUTE WITH WORKS	0.0118
'DIVERSION'	0.0119

PIA: Personal Injury Accidents

ROAD USER COSTS PER DAY	\$166,561
CONGESTED HOURS PER DAY*	9

*Delays Exceeding User-Specified Maximum

**USH 45: STH 190 TO NORTH AVE (MILWAUKEE COUNTY)
OFF-PEAK DAY CLOSURE
NO DIVERSION ROUTE (MAX QUEUE METHOD)**

OCTOBER

Analyzed for 2009
Construction Season

GRAPHICAL REPRESENTATION OF TRAFFIC MODEL INPUT AND OUTPUT
SUNDAY NORTHBOUND DIRECTION

