

USH 45: STH 190 TO NORTH AVE (MILWAUKEE COUNTY) OFF-PEAK DAY CLOSURE NO DIVERSION ROUTE (MAX QUEUE METHOD)	OCTOBER Analyzed for 2009 Construction Season
---	--

SUMMARY OF TRAFFIC MODEL OUTPUT

FRIDAY SOUTHBOUND DIRECTION

TIME OF DAY	FLOWS AND CAPACITY IN VEH/HR						AVERAGE SPEEDS IN MPH				
	MAIN ROUTE		SITE CAPA CITY	FLOW		AV.DEL PER VEH (MINS)	AVERAGE QUEUE (VEH)	MAIN ROUTE		SITE	
	DEMAND FLOW	PCT HEAVY		MAIN ROUTE	'DIVER TED'			WITHOUT WORK ZONE	WITH WORK ZONE		
MID-1 AM	729	0.0	OFF	729	0	0.00	0	69.8	69.8	69.8	
1-2 AM	482	0.0	OFF	482	0	0.00	0	70.1	70.1	70.1	
2-3 AM	425	0.0	OFF	425	0	0.00	0	70.2	70.2	70.2	
3-4 AM	496	0.0	OFF	496	0	0.00	0	70.1	70.1	70.1	
4-5 AM	816	0.0	OFF	816	0	0.00	0	69.7	69.7	69.7	
5-6 AM	2264	0.0	OFF	2264	0	0.00	0	67.9	67.9	67.9	
6-7 AM	4972	0.0	OFF	4972	0	0.00	0	56.9	56.9	56.9	
7-8 AM	5772	0.0	OFF	5772	0	0.00	0	51.4	51.4	51.4	
8-9 AM	5057	0.0	OFF	5057	0	0.00	0	56.3	56.3	56.3	
9-10 AM	4459	0.0	OFF	4459	0	0.00	0	60.4	60.4	60.4	
10-11 AM	3426	0.0	1999	2660	766	13.87+	462	66.4	9.3	27.9	
11AM-NOON	4675	0.0	1999	1995	2680	17.25+	580	58.9	8.3	27.9	
NOON-1PM	4902	0.0	2000	2000	2902	17.19+	580	57.4	8.3	27.9	
1-2 PM	5013	0.0	2000	2000	3013	17.15+	580	56.6	8.3	27.9	
2-3 PM	5676	0.0	2000	2000	3676	16.90+	580	52.1	8.3	27.9	
3-4 PM	4722	0.0	OFF	4722	0	1.86	168	58.6	31.4	31.4	
4-5 PM	4558	0.0	OFF	4558	0	0.00	0	59.7	59.7	59.7	
5-6 PM	4318	0.0	OFF	4318	0	0.00	0	61.4	61.4	61.4	
6-7 PM	4201	0.0	OFF	4201	0	0.00	0	62.2	62.2	62.2	
7-8 PM	3405	0.0	OFF	3405	0	0.00	0	66.5	66.5	66.5	
8-9 PM	2554	0.0	OFF	2554	0	0.00	0	67.6	67.6	67.6	
9-10 PM	2452	0.0	OFF	2452	0	0.00	0	67.7	67.7	67.7	
10-11 PM	1865	0.0	OFF	1865	0	0.00	0	68.4	68.4	68.4	
11PM-MID	1562	0.0	OFF	1562	0	0.00	0	68.8	68.8	68.8	

"OFF" INDICATES NO ROAD WORK (ALL LANES OPEN TO TRAFFIC)

+ INDICATES QUEUEING EXCEEDS USER-SPECIFIED MAXIMUM LIMIT

----- SITE BREAKDOWN DELAYS -----	
BREAKDOWN DURATION (MINS)	0
RANGE OF QUEUE DELAY - MIN (VEH-H) MAX	0.0
AV BREAKDOWNS PER DAY	0.00
AV QUEUE DELAY/DAY (VEH-H)	0.0
AV TOTAL DELAY/DAY (VEH-H)	0.0

----- SITE ACCIDENT DELAYS -----	
BREAKDOWN DURATION (MINS)	0
RANGE OF QUEUE DELAY - MIN (VEH-H) MAX	0
AV BREAKDOWNS PER DAY	0
AV QUEUE DELAY/DAY (VEH-H)	0
AV TOTAL DELAY/DAY (VEH-H)	0

AVERAGE ACCIDENT NUMBERS (PIA/DAY)	
MAIN ROUTE WITHOUT WORKS	0.0263
MAIN ROUTE WITH WORKS	0.0213
'DIVERSION'	0.0101
<small>PIA: Personal Injury Accidents</small>	
IMPACTS ON ROAD USERS	
ROAD USER COSTS PER DAY	\$71,806
CONGESTED HOURS PER DAY*	5

*Delays Exceeding User-Specified Maximum

**USH 45: STH 190 TO NORTH AVE (MILWAUKEE COUNTY)
OFF-PEAK DAY CLOSURE
NO DIVERSION ROUTE (MAX QUEUE METHOD)**

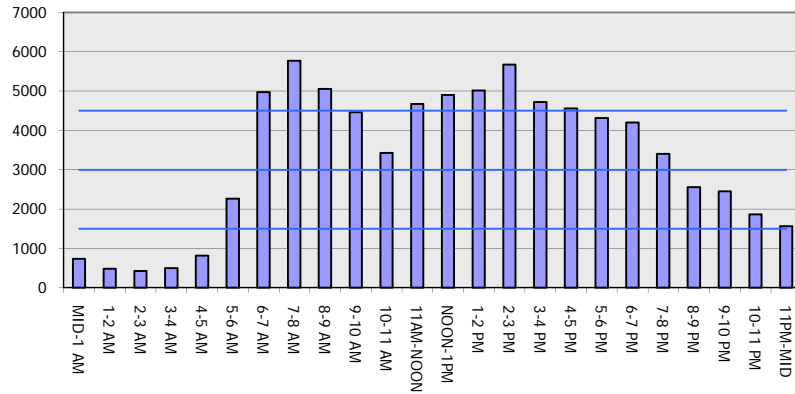
OCTOBER

Analyzed for 2009
Construction Season

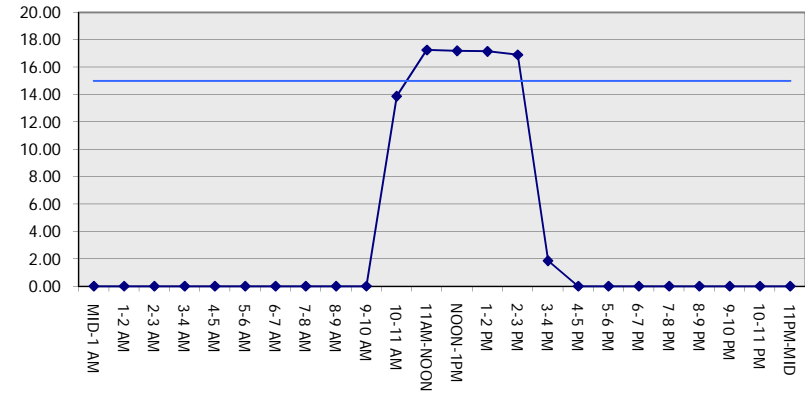
GRAPHICAL REPRESENTATION OF TRAFFIC MODEL INPUT AND OUTPUT

FRIDAY SOUTHBOUND DIRECTION

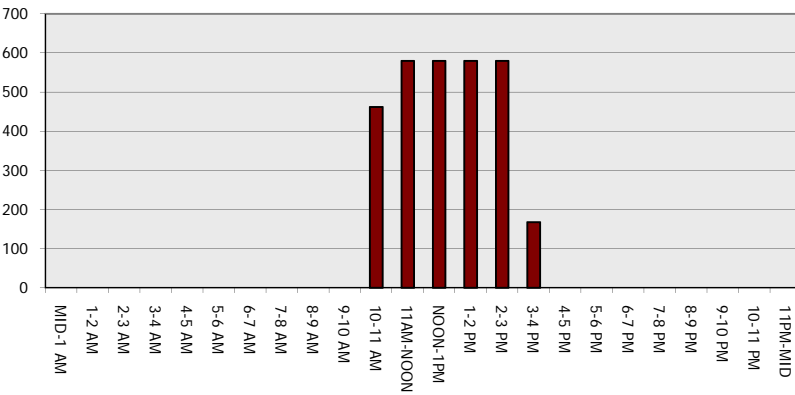
Main Route - Traffic Demand (Vehicles Per Hour)



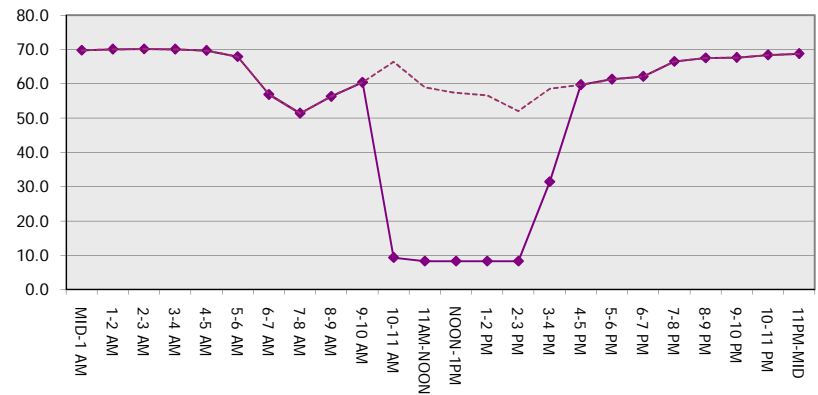
Main Route Average Delay Per Vehicle (Minutes)



Main Route - Average Queue Length (Vehicles)



Main Route - Average Speed (MPH)



USH 45: STH 190 TO NORTH AVE (MILWAUKEE COUNTY) OFF-PEAK DAY CLOSURE NO DIVERSION ROUTE (MAX QUEUE METHOD)	OCTOBER
	Analyzed for 2009 Construction Season

SUMMARY OF TRAFFIC MODEL OUTPUT

FRIDAY NORTHBOUND DIRECTION

TIME OF DAY	FLOWS AND CAPACITY IN VEH/HR							AVERAGE SPEEDS IN MPH			
	MAIN ROUTE		SITE CAPA CITY	FLOW		AV.DEL PER VEH (MINS)	AVERAGE QUEUE (VEH)	MAIN ROUTE		SITE	
	DEMAND FLOW	PCT HEAVY		MAIN ROUTE	'DIVER TED'			WITHOUT WORK ZONE	WITH WORK ZONE		
MID-1 AM	992	0.0	OFF	992	0	0.00	0	69.5	69.5	69.5	
1-2 AM	763	0.0	OFF	763	0	0.00	0	69.8	69.8	69.8	
2-3 AM	705	0.0	OFF	705	0	0.00	0	69.9	69.9	69.9	
3-4 AM	748	0.0	OFF	748	0	0.00	0	69.8	69.8	69.8	
4-5 AM	1311	0.0	OFF	1311	0	0.00	0	69.1	69.1	69.1	
5-6 AM	3150	0.0	OFF	3150	0	0.00	0	66.8	66.8	66.8	
6-7 AM	5295	0.0	OFF	5295	0	0.00	0	54.7	54.7	54.7	
7-8 AM	6310	0.0	OFF	6310	0	0.00	0	47.8	47.8	47.8	
8-9 AM	5149	0.0	OFF	5149	0	0.00	0	55.7	55.7	55.7	
9-10 AM	4472	0.0	OFF	4472	0	0.00	0	60.3	60.3	60.3	
10-11 AM	3629	0.0	1999	2548	1080	14.39+	474	66.1	9.1	27.9	
11AM-NOON	4875	0.0	1999	2000	2875	17.20+	580	57.6	8.3	27.9	
NOON-1PM	5210	0.0	2000	2000	3210	17.08+	580	55.3	8.3	27.9	
1-2 PM	5476	0.0	2000	2000	3476	16.98+	580	53.5	8.3	27.9	
2-3 PM	6101	0.0	2000	2000	4101	16.71+	580	49.2	8.3	27.9	
3-4 PM	6011	0.0	OFF	6011	0	5.54	554	49.8	15.6	15.6	
4-5 PM	6507	0.0	OFF	6507	0	7.95	813	46.4	11.8	11.8	
5-6 PM	6481	0.0	OFF	6481	0	12.90	1308	46.6	8.1	8.1	
6-7 PM	4339	0.0	OFF	4339	0	7.65	722	61.2	13.0	13.0	
7-8 PM	3677	0.0	OFF	3677	0	0.00	0	65.8	65.8	65.8	
8-9 PM	2926	0.0	OFF	2926	0	0.00	0	67.1	67.1	67.1	
9-10 PM	3002	0.0	OFF	3002	0	0.00	0	67.0	67.0	67.0	
10-11 PM	2354	0.0	OFF	2354	0	0.00	0	67.8	67.8	67.8	
11PM-MID	1885	0.0	OFF	1885	0	0.00	0	68.4	68.4	68.4	

"OFF" INDICATES NO ROAD WORK (ALL LANES OPEN TO TRAFFIC)

+ INDICATES QUEUEING EXCEEDS USER-SPECIFIED MAXIMUM LIMIT

----- SITE BREAKDOWN DELAYS -----	
BREAKDOWN DURATION (MINS)	0
RANGE OF QUEUE DELAY - MIN (VEH-H) MAX	0.0
AV BREAKDOWNS PER DAY	0.00
AV QUEUE DELAY/DAY (VEH-H)	0.0
AV TOTAL DELAY/DAY (VEH-H)	0.0

----- SITE ACCIDENT DELAYS -----	
BREAKDOWN DURATION (MINS)	0
RANGE OF QUEUE DELAY - MIN (VEH-H) MAX	0
AV BREAKDOWNS PER DAY	0
AV QUEUE DELAY/DAY (VEH-H)	0
AV TOTAL DELAY/DAY (VEH-H)	0

AVERAGE ACCIDENT NUMBERS (PIA/DAY)	
MAIN ROUTE WITHOUT WORKS	0.0305
MAIN ROUTE WITH WORKS	0.0249
'DIVERSION'	0.0114

PIA: Personal Injury Accidents

ECONOMIC IMPACT ON ROAD USERS	
ROAD USER COSTS PER DAY	\$110,766
CONGESTED HOURS PER DAY*	5

*Delays Exceeding User-Specified Maximum

**USH 45: STH 190 TO NORTH AVE (MILWAUKEE COUNTY)
OFF-PEAK DAY CLOSURE
NO DIVERSION ROUTE (MAX QUEUE METHOD)**

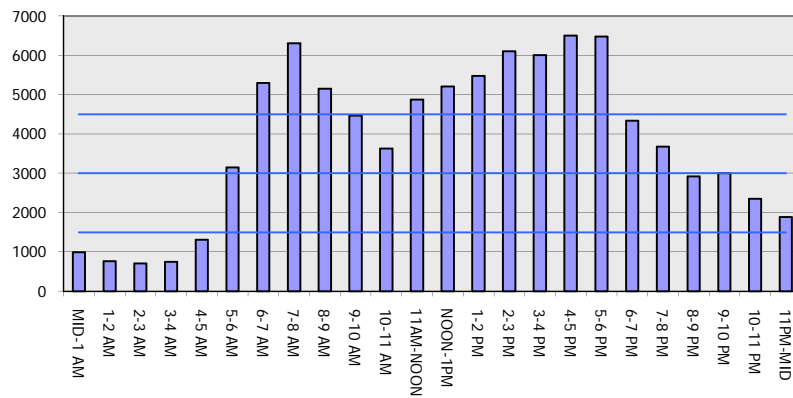
OCTOBER

Analyzed for 2009
Construction Season

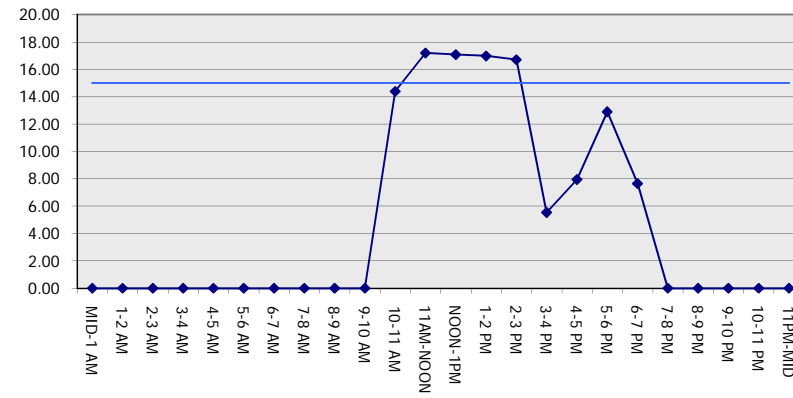
GRAPHICAL REPRESENTATION OF TRAFFIC MODEL INPUT AND OUTPUT

FRIDAY NORTHBOUND DIRECTION

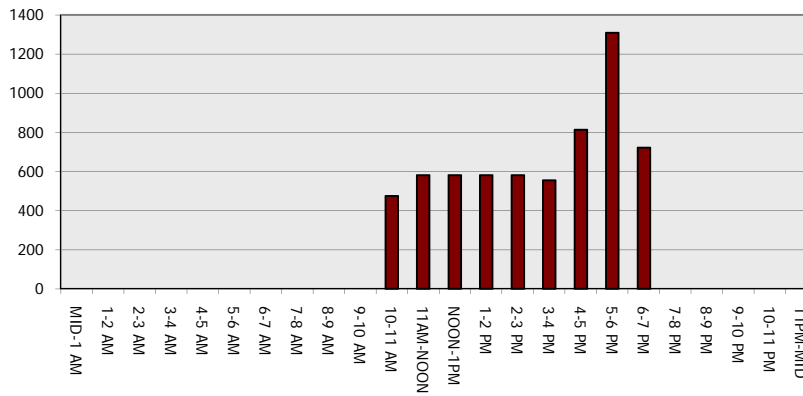
Main Route - Traffic Demand (Vehicles Per Hour)



Main Route Average Delay Per Vehicle (Minutes)



Main Route - Average Queue Length (Vehicles)



Main Route - Average Speed (MPH)

