

**IH 43: STH 100 TO SILVER SPRING DR (MILWAUKEE COUNTY)
OFF-PEAK DAY CLOSURE
NO DIVERSION ROUTE (MAX QUEUE METHOD)**

OCTOBER
Analyzed for 2009
Construction Season

SUMMARY OF TRAFFIC MODEL OUTPUT
SUNDAY SOUTHBOUND DIRECTION

TIME OF DAY	FLOWS AND CAPACITY IN VEH/HR						AVERAGE SPEEDS IN MPH				
	MAIN ROUTE		SITE CAPA CITY	FLOW		AV.DEL PER VEH (MINS)	AVERAGE QUEUE (VEH)	MAIN ROUTE		SITE	
	DEMAND FLOW	PCT HEAVY		MAIN ROUTE	'DIVER TED'			WITHOUT WORK ZONE	WITH WORK ZONE		
MID-1 AM	478	0.0	OFF	478	0	0.00	0	65.5	65.5	65.5	
1-2 AM	240	0.0	OFF	240	0	0.00	0	66.0	66.0	66.0	
2-3 AM	141	0.0	OFF	141	0	0.00	0	66.1	66.1	66.1	
3-4 AM	116	0.0	OFF	116	0	0.00	0	66.2	66.2	66.2	
4-5 AM	133	0.0	OFF	133	0	0.00	0	66.1	66.1	66.1	
5-6 AM	233	0.0	OFF	233	0	0.00	0	66.0	66.0	66.0	
6-7 AM	427	0.0	OFF	427	0	0.00	0	65.6	65.6	65.6	
7-8 AM	801	0.0	OFF	801	0	0.00	0	64.9	64.9	64.9	
8-9 AM	1117	0.0	OFF	1117	0	0.00	0	64.3	64.3	64.3	
9-10 AM	1754	0.0	1499	1754	0	3.68	92	63.1	29.1	30.8	
10-11 AM	2217	0.0	1499	1695	522	15.22+	387	62.2	11.0	30.8	
11AM-NOON	2580	0.0	1499	1495	1085	15.84+	404	60.1	10.6	30.8	
NOON-1PM	2859	0.0	1499	1491	1367	15.70+	405	57.2	10.6	30.8	
1-2 PM	2842	0.0	1499	1493	1349	15.70+	405	57.4	10.6	30.8	
2-3 PM	2829	0.0	1499	1494	1334	15.70+	405	57.5	10.6	30.8	
3-4 PM	3057	0.0	1499	1496	1561	15.59+	406	55.2	10.6	30.8	
4-5 PM	3147	0.0	1499	1498	1649	15.53+	406	54.3	10.6	30.8	
5-6 PM	3195	0.0	1499	1499	1696	15.50+	406	53.8	10.6	30.8	
6-7 PM	3062	0.0	1499	1498	1564	15.58+	406	55.1	10.6	30.8	
7-8 PM	2144	0.0	OFF	2144	0	0.80	46	62.4	49.8	49.8	
8-9 PM	1306	0.0	OFF	1306	0	0.00	0	64.0	64.0	64.0	
9-10 PM	1045	0.0	OFF	1045	0	0.00	0	64.5	64.5	64.5	
10-11 PM	613	0.0	OFF	613	0	0.00	0	65.3	65.3	65.3	
11PM-MID	462	0.0	OFF	462	0	0.00	0	65.5	65.5	65.5	

"OFF" INDICATES NO ROAD WORK (ALL LANES OPEN TO TRAFFIC)

+ INDICATES QUEUEING EXCEEDS USER-SPECIFIED MAXIMUM LIMIT

----- SITE BREAKDOWN DELAYS -----	
BREAKDOWN DURATION (MINS)	0
RANGE OF QUEUE DELAY - MIN (VEH-H) MAX	0.0
AV BREAKDOWNS PER DAY	0.00
AV QUEUE DELAY/DAY (VEH-H)	0.0
AV TOTAL DELAY/DAY (VEH-H)	0.0

----- SITE ACCIDENT DELAYS -----	
BREAKDOWN DURATION (MINS)	0
RANGE OF QUEUE DELAY - MIN (VEH-H) MAX	0
AV BREAKDOWNS PER DAY	0
AV QUEUE DELAY/DAY (VEH-H)	0
AV TOTAL DELAY/DAY (VEH-H)	0

AVERAGE ACCIDENT NUMBERS (PIA/DAY)	
MAIN ROUTE WITHOUT WORKS	0.0193
MAIN ROUTE WITH WORKS	0.0119
'DIVERSION'	0.0147
PIA: Personal Injury Accidents	
IMPACTS ON ROAD USERS	
ROAD USER COSTS PER DAY	\$113,857
CONGESTED HOURS PER DAY*	9

*Delays Exceeding User-Specified Maximum

IH 43: STH 100 TO SILVER SPRING DR (MILWAUKEE COUNTY)
OFF-PEAK DAY CLOSURE
NO DIVERSION ROUTE (MAX QUEUE METHOD)

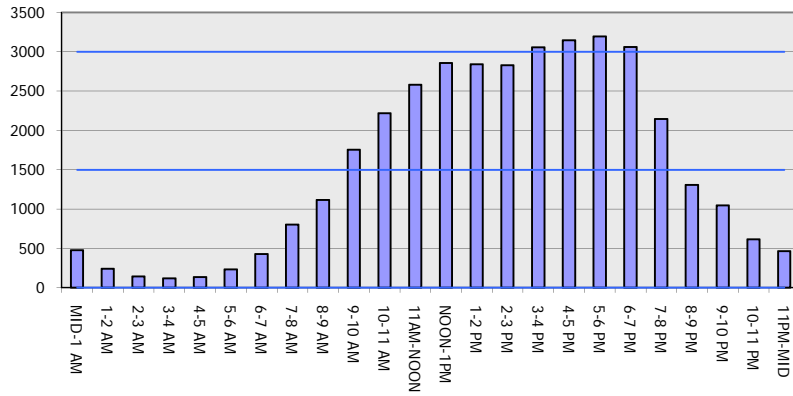
OCTOBER

Analyzed for 2009
 Construction Season

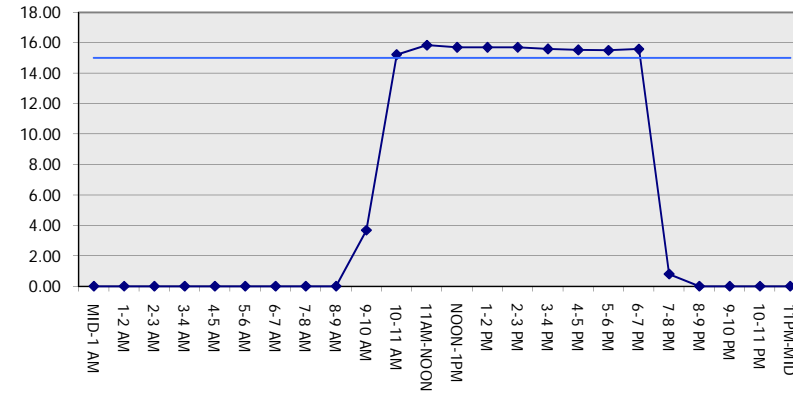
GRAPHICAL REPRESENTATION OF TRAFFIC MODEL INPUT AND OUTPUT

SUNDAY SOUTHBOUND DIRECTION

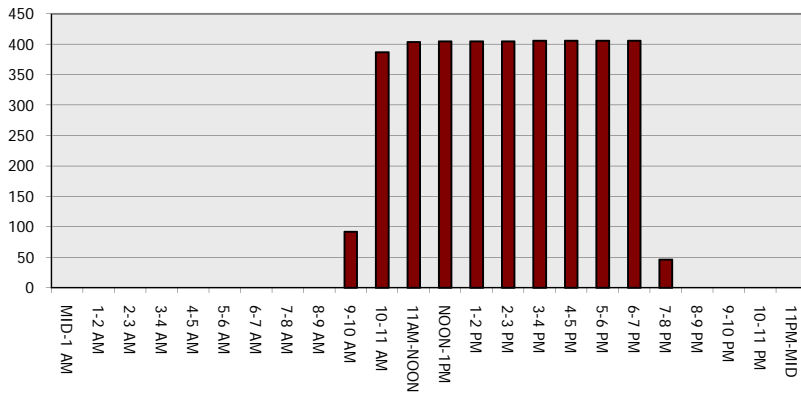
Main Route - Traffic Demand (Vehicles Per Hour)



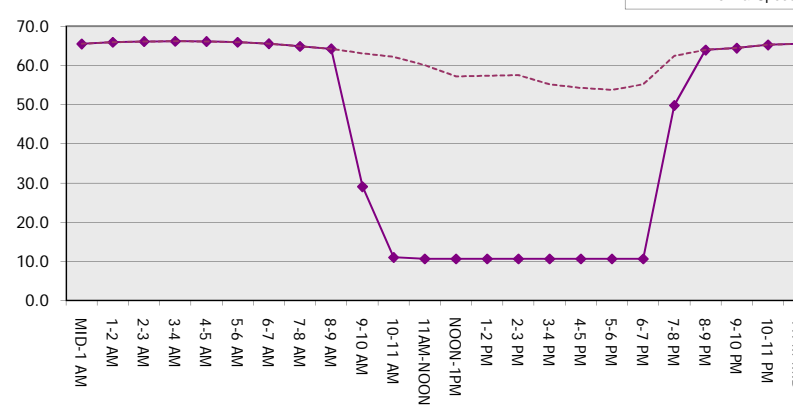
Main Route Average Delay Per Vehicle (Minutes)



Main Route - Average Queue Length (Vehicles)



Main Route - Average Speed (MPH)



IH 43: STH 100 TO SILVER SPRING DR (MILWAUKEE COUNTY) OFF-PEAK DAY CLOSURE NO DIVERSION ROUTE (MAX QUEUE METHOD)	OCTOBER
	Analyzed for 2009 Construction Season

SUMMARY OF TRAFFIC MODEL OUTPUT

SUNDAY NORTHBOUND DIRECTION

TIME OF DAY	FLOWS AND CAPACITY IN VEH/HR							AVERAGE SPEEDS IN MPH		
	MAIN ROUTE		SITE CAPA CITY	FLOW		AV.DEL PER VEH (MINS)	AVERAGE QUEUE (VEH)	MAIN ROUTE		SITE
	DEMAND FLOW	PCT HEAVY		MAIN ROUTE	'DIVER TED'			WITHOUT WORK ZONE	WITH WORK ZONE	
MID-1 AM	596	0.0	OFF	596	0	0.00	0	65.3	65.3	65.3
1-2 AM	358	0.0	OFF	358	0	0.00	0	65.7	65.7	65.7
2-3 AM	324	0.0	OFF	324	0	0.00	0	65.8	65.8	65.8
3-4 AM	238	0.0	OFF	238	0	0.00	0	66.0	66.0	66.0
4-5 AM	171	0.0	OFF	171	0	0.00	0	66.1	66.1	66.1
5-6 AM	288	0.0	OFF	288	0	0.00	0	65.8	65.8	65.8
6-7 AM	693	0.0	OFF	693	0	0.00	0	65.1	65.1	65.1
7-8 AM	1184	0.0	OFF	1184	0	0.00	0	64.1	64.1	64.1
8-9 AM	1580	0.0	OFF	1580	0	0.00	0	63.5	63.5	63.5
9-10 AM	1832	0.0	1499	1832	0	5.65	152	63.0	22.5	30.8
10-11 AM	2009	0.0	1499	1548	461	15.75+	398	62.7	10.7	30.8
11AM-NOON	2466	0.0	1500	1501	965	15.89+	404	61.2	10.6	30.8
NOON-1PM	2618	0.0	1500	1503	1115	15.81+	404	59.7	10.6	30.8
1-2 PM	2575	0.0	1500	1502	1073	15.83+	404	60.1	10.6	30.8
2-3 PM	2580	0.0	1500	1502	1078	15.83+	404	60.1	10.6	30.8
3-4 PM	2694	0.0	1500	1503	1191	15.77+	404	58.9	10.6	30.8
4-5 PM	2489	0.0	1500	1501	988	15.87+	404	61.0	10.6	30.8
5-6 PM	2138	0.0	1500	1500	638	15.94+	404	62.4	10.7	30.8
6-7 PM	1850	0.0	1500	1500	349	15.96+	403	63.0	10.7	30.8
7-8 PM	1460	0.0	OFF	1460	0	0.49	30	63.7	55.0	55.0
8-9 PM	1045	0.0	OFF	1045	0	0.00	0	64.5	64.5	64.5
9-10 PM	874	0.0	OFF	874	0	0.00	0	64.8	64.8	64.8
10-11 PM	712	0.0	OFF	712	0	0.00	0	65.1	65.1	65.1
11PM-MID	493	0.0	OFF	493	0	0.00	0	65.5	65.5	65.5

"OFF" INDICATES NO ROAD WORK (ALL LANES OPEN TO TRAFFIC)

+ INDICATES QUEUEING EXCEEDS USER-SPECIFIED MAXIMUM LIMIT

----- SITE BREAKDOWN DELAYS -----	
BREAKDOWN DURATION (MINS)	0
RANGE OF QUEUE DELAY - MIN (VEH-H) MAX	0.0
AV BREAKDOWNS PER DAY	0.00
AV QUEUE DELAY/DAY (VEH-H)	0.0
AV TOTAL DELAY/DAY (VEH-H)	0.0

----- SITE ACCIDENT DELAYS -----	
BREAKDOWN DURATION (MINS)	0
RANGE OF QUEUE DELAY - MIN (VEH-H) MAX	0
AV BREAKDOWNS PER DAY	0
AV QUEUE DELAY/DAY (VEH-H)	0
AV TOTAL DELAY/DAY (VEH-H)	0

AVERAGE ACCIDENT NUMBERS (PIA/DAY)	
MAIN ROUTE WITHOUT WORKS	0.0175
MAIN ROUTE WITH WORKS	0.0123
'DIVERSION'	0.0096

PIA: Personal Injury Accidents

ECONOMIC IMPACT ON ROAD USERS	
ROAD USER COSTS PER DAY	\$97,219
CONGESTED HOURS PER DAY*	9

*Delays Exceeding User-Specified Maximum

IH 43: STH 100 TO SILVER SPRING DR (MILWAUKEE COUNTY)
OFF-PEAK DAY CLOSURE
NO DIVERSION ROUTE (MAX QUEUE METHOD)

OCTOBER

Analyzed for 2009
 Construction Season

GRAPHICAL REPRESENTATION OF TRAFFIC MODEL INPUT AND OUTPUT
SUNDAY NORTHBOUND DIRECTION

