

IH 43: STH 100 TO SILVER SPRING DR (MILWAUKEE COUNTY) OFF-PEAK DAY CLOSURE NO DIVERSION ROUTE (MAX QUEUE METHOD)	OCTOBER Analyzed for 2009 Construction Season
---	--

SUMMARY OF TRAFFIC MODEL OUTPUT

SATURDAY SOUTHBOUND DIRECTION

TIME OF DAY	FLOWS AND CAPACITY IN VEH/HR						AVERAGE SPEEDS IN MPH				
	MAIN ROUTE		SITE CAPA CITY	FLOW		AV.DEL PER VEH (MINS)	AVERAGE QUEUE (VEH)	MAIN ROUTE		SITE	
	DEMAND FLOW	PCT HEAVY		MAIN ROUTE	'DIVER TED'			WITHOUT WORK ZONE	WITH WORK ZONE		
MID-1 AM	400	0.0	OFF	400	0	0.00	0	65.6	65.6	65.6	
1-2 AM	177	0.0	OFF	177	0	0.00	0	66.1	66.1	66.1	
2-3 AM	130	0.0	OFF	130	0	0.00	0	66.1	66.1	66.1	
3-4 AM	126	0.0	OFF	126	0	0.00	0	66.1	66.1	66.1	
4-5 AM	227	0.0	OFF	227	0	0.00	0	66.0	66.0	66.0	
5-6 AM	436	0.0	OFF	436	0	0.00	0	65.6	65.6	65.6	
6-7 AM	712	0.0	OFF	712	0	0.00	0	65.1	65.1	65.1	
7-8 AM	1306	0.0	OFF	1306	0	0.00	0	64.0	64.0	64.0	
8-9 AM	1864	0.0	1499	1864	0	5.55	155	62.9	22.7	30.8	
9-10 AM	2161	0.0	1499	1501	660	15.94+	404	62.3	10.7	30.8	
10-11 AM	2315	0.0	1500	1501	814	15.93+	404	62.1	10.7	30.8	
11AM-NOON	2519	0.0	1500	1504	1015	15.87+	404	60.7	10.6	30.8	
NOON-1PM	2725	0.0	1500	1506	1218	15.76+	404	58.6	10.6	30.8	
1-2 PM	2621	0.0	1500	1504	1117	15.81+	404	59.7	10.6	30.8	
2-3 PM	2470	0.0	1500	1501	969	15.88+	404	61.2	10.6	30.8	
3-4 PM	2632	0.0	1500	1503	1129	15.80+	404	59.6	10.6	30.8	
4-5 PM	2585	0.0	1500	1502	1082	15.82+	404	60.1	10.6	30.8	
5-6 PM	2599	0.0	1500	1502	1097	15.82+	404	59.9	10.6	30.8	
6-7 PM	2347	0.0	OFF	2347	0	0.88	45	62.0	48.6	48.6	
7-8 PM	1798	0.0	OFF	1798	0	0.00	0	63.0	63.0	63.0	
8-9 PM	1378	0.0	OFF	1378	0	0.00	0	63.8	63.8	63.8	
9-10 PM	1239	0.0	OFF	1239	0	0.00	0	64.1	64.1	64.1	
10-11 PM	1040	0.0	OFF	1040	0	0.00	0	64.5	64.5	64.5	
11PM-MID	773	0.0	OFF	773	0	0.00	0	65.0	65.0	65.0	

"OFF" INDICATES NO ROAD WORK (ALL LANES OPEN TO TRAFFIC)

+ INDICATES QUEUEING EXCEEDS USER-SPECIFIED MAXIMUM LIMIT

----- SITE BREAKDOWN DELAYS -----	
BREAKDOWN DURATION (MINS)	0
RANGE OF QUEUE DELAY - MIN (VEH-H) MAX	0.0
AV BREAKDOWNS PER DAY	0.00
AV QUEUE DELAY/DAY (VEH-H)	0.0
AV TOTAL DELAY/DAY (VEH-H)	0.0

----- SITE ACCIDENT DELAYS -----	
BREAKDOWN DURATION (MINS)	0
RANGE OF QUEUE DELAY - MIN (VEH-H) MAX	0
AV BREAKDOWNS PER DAY	0
AV QUEUE DELAY/DAY (VEH-H)	0
AV TOTAL DELAY/DAY (VEH-H)	0

AVERAGE ACCIDENT NUMBERS (PIA/DAY)	
MAIN ROUTE WITHOUT WORKS	0.0192
MAIN ROUTE WITH WORKS	0.0134
'DIVERSION'	0.0111
<small>PIA: Personal Injury Accidents</small>	
IMPACTS ON ROAD USERS	
ROAD USER COSTS PER DAY	\$102,554
CONGESTED HOURS PER DAY*	9

*Delays Exceeding User-Specified Maximum

IH 43: STH 100 TO SILVER SPRING DR (MILWAUKEE COUNTY)
OFF-PEAK DAY CLOSURE
NO DIVERSION ROUTE (MAX QUEUE METHOD)

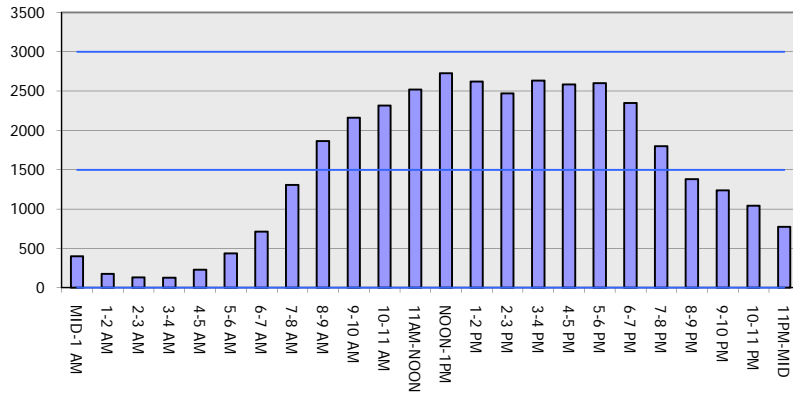
OCTOBER

Analyzed for 2009
 Construction Season

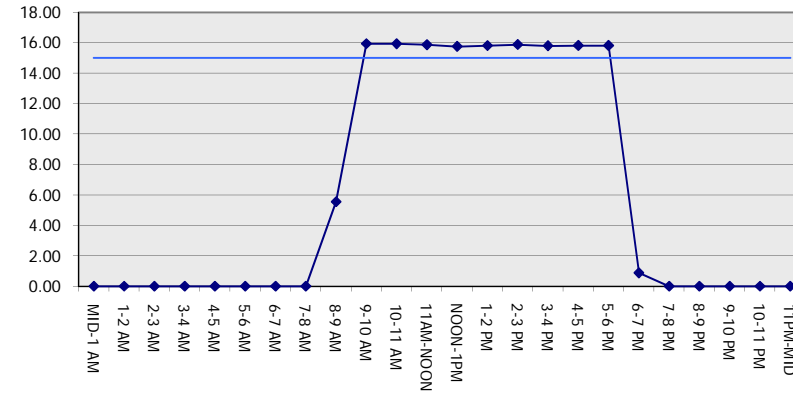
GRAPHICAL REPRESENTATION OF TRAFFIC MODEL INPUT AND OUTPUT

SATURDAY SOUTHBOUND DIRECTION

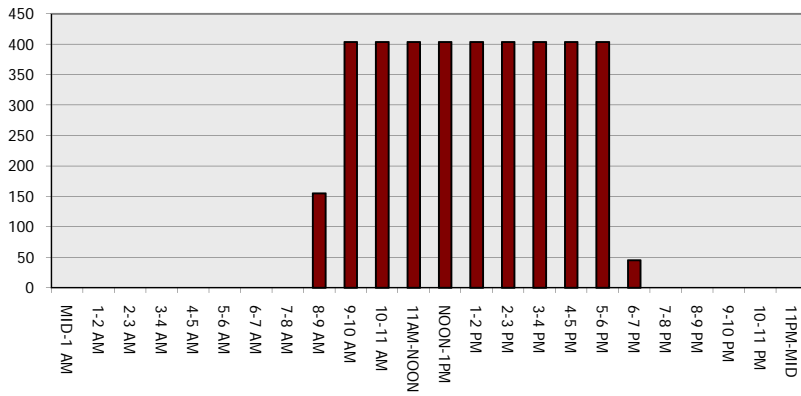
Main Route - Traffic Demand (Vehicles Per Hour)



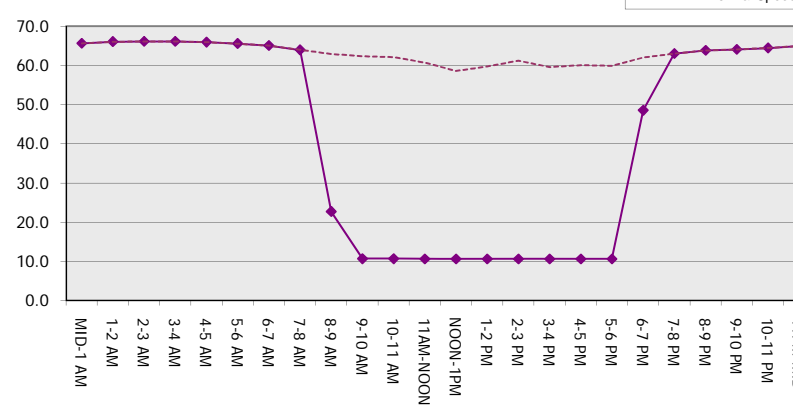
Main Route Average Delay Per Vehicle (Minutes)



Main Route - Average Queue Length (Vehicles)



Main Route - Average Speed (MPH)



IH 43: STH 100 TO SILVER SPRING DR (MILWAUKEE COUNTY) OFF-PEAK DAY CLOSURE NO DIVERSION ROUTE (MAX QUEUE METHOD)	OCTOBER
	Analyzed for 2009 Construction Season

SUMMARY OF TRAFFIC MODEL OUTPUT

SATURDAY NORTHBOUND DIRECTION

TIME OF DAY	FLOWS AND CAPACITY IN VEH/HR						AVERAGE SPEEDS IN MPH			
	MAIN ROUTE		SITE CAPA CITY	FLOW		AV.DEL PER VEH (MINS)	AVERAGE QUEUE (VEH)	MAIN ROUTE		SITE
	DEMAND FLOW	PCT HEAVY		MAIN ROUTE	'DIVER TED'			WITHOUT WORK ZONE	WITH WORK ZONE	
MID-1 AM	571	0.0	OFF	571	0	0.00	0	65.3	65.3	65.3
1-2 AM	342	0.0	OFF	342	0	0.00	0	65.8	65.8	65.8
2-3 AM	292	0.0	OFF	292	0	0.00	0	65.8	65.8	65.8
3-4 AM	219	0.0	OFF	219	0	0.00	0	66.0	66.0	66.0
4-5 AM	278	0.0	OFF	278	0	0.00	0	65.9	65.9	65.9
5-6 AM	420	0.0	OFF	420	0	0.00	0	65.6	65.6	65.6
6-7 AM	733	0.0	OFF	733	0	0.00	0	65.0	65.0	65.0
7-8 AM	1371	0.0	OFF	1371	0	0.00	0	63.8	63.8	63.8
8-9 AM	1926	0.0	1499	1926	0	6.28	182	62.8	21.0	30.8
9-10 AM	2333	0.0	1499	1499	833	15.92+	404	62.0	10.7	30.8
10-11 AM	2809	0.0	1499	1495	1314	15.71+	405	57.7	10.6	30.8
11AM-NOON	2935	0.0	1499	1496	1439	15.65+	405	56.4	10.6	30.8
NOON-1PM	3065	0.0	1499	1497	1568	15.59+	406	55.1	10.6	30.8
1-2 PM	2977	0.0	1499	1498	1479	15.63+	405	56.0	10.6	30.8
2-3 PM	2891	0.0	1499	1498	1393	15.67+	405	56.9	10.6	30.8
3-4 PM	2896	0.0	1499	1499	1397	15.67+	405	56.8	10.6	30.8
4-5 PM	2666	0.0	1500	1499	1167	15.78+	404	59.2	10.6	30.8
5-6 PM	2473	0.0	1500	1500	973	15.88+	404	61.2	10.7	30.8
6-7 PM	2126	0.0	OFF	2126	0	0.77	44	62.4	50.3	50.3
7-8 PM	1612	0.0	OFF	1612	0	0.00	0	63.4	63.4	63.4
8-9 PM	1475	0.0	OFF	1475	0	0.00	0	63.7	63.7	63.7
9-10 PM	1358	0.0	OFF	1358	0	0.00	0	63.8	63.8	63.8
10-11 PM	1369	0.0	OFF	1369	0	0.00	0	63.8	63.8	63.8
11PM-MID	967	0.0	OFF	967	0	0.00	0	64.6	64.6	64.6

"OFF" INDICATES NO ROAD WORK (ALL LANES OPEN TO TRAFFIC)

+ INDICATES QUEUEING EXCEEDS USER-SPECIFIED MAXIMUM LIMIT

BREAKDOWN DURATION (MINS)	0
RANGE OF QUEUE DELAY - MIN (VEH-H) MAX	0.0
AV BREAKDOWNS PER DAY	0.00
AV QUEUE DELAY/DAY (VEH-H)	0.0
AV TOTAL DELAY/DAY (VEH-H)	0.0

BREAKDOWN DURATION (MINS)	0
RANGE OF QUEUE DELAY - MIN (VEH-H) MAX	0
AV BREAKDOWNS PER DAY	0
AV QUEUE DELAY/DAY (VEH-H)	0
AV TOTAL DELAY/DAY (VEH-H)	0

MAIN ROUTE WITHOUT WORKS	0.0211
MAIN ROUTE WITH WORKS	0.0140
'DIVERSION'	0.0141

PIA: Personal Injury Accidents

ROAD USER COSTS PER DAY	\$112,607
CONGESTED HOURS PER DAY*	9

*Delays Exceeding User-Specified Maximum

IH 43: STH 100 TO SILVER SPRING DR (MILWAUKEE COUNTY)
OFF-PEAK DAY CLOSURE
NO DIVERSION ROUTE (MAX QUEUE METHOD)

OCTOBER

Analyzed for 2009
 Construction Season

GRAPHICAL REPRESENTATION OF TRAFFIC MODEL INPUT AND OUTPUT
SATURDAY NORTHBOUND DIRECTION

