

IH 43: STH 100 TO SILVER SPRING DR (MILWAUKEE COUNTY) OFF-PEAK DAY CLOSURE NO DIVERSION ROUTE (MAX QUEUE METHOD)	AUGUST
	Analyzed for 2009 Construction Season

SUMMARY OF TRAFFIC MODEL OUTPUT

MON-THUR SOUTHBOUND DIRECTION

TIME OF DAY	FLOWS AND CAPACITY IN VEH/HR						AVERAGE SPEEDS IN MPH			
	MAIN ROUTE		SITE CAPA CITY	FLOW		AV.DEL PER VEH (MINS)	AVERAGE QUEUE (VEH)	MAIN ROUTE		SITE
	DEMAND FLOW	PCT HEAVY		MAIN ROUTE	'DIVER TED'			WITHOUT WORK ZONE	WITH WORK ZONE	
MID-1 AM	284	0.0	OFF	284	0	0.00	0	65.8	65.8	65.8
1-2 AM	171	0.0	OFF	171	0	0.00	0	66.1	66.1	66.1
2-3 AM	135	0.0	OFF	135	0	0.00	0	66.1	66.1	66.1
3-4 AM	177	0.0	OFF	177	0	0.00	0	66.1	66.1	66.1
4-5 AM	415	0.0	OFF	415	0	0.00	0	65.6	65.6	65.6
5-6 AM	1221	0.0	OFF	1221	0	0.00	0	64.1	64.1	64.1
6-7 AM	2953	0.0	OFF	2953	0	0.00	0	56.3	56.3	56.3
7-8 AM	4120	0.0	OFF	4120	0	0.00	0	44.3	44.3	44.3
8-9 AM	3499	0.0	OFF	3499	0	0.00	0	50.7	50.7	50.7
9-10 AM	2702	0.0	OFF	2702	0	0.00	0	58.8	58.8	58.8
10-11 AM	2523	0.0	1499	1958	565	12.59+	327	60.7	12.6	31.7
11AM-NOON	2650	0.0	1499	1493	1157	15.81+	405	59.4	10.6	30.8
NOON-1PM	2634	0.0	1499	1494	1140	15.81+	404	59.5	10.6	30.8
1-2 PM	2402	0.0	1499	1498	903	15.92+	404	61.9	10.6	30.8
2-3 PM	2834	0.0	1499	1492	1342	15.71+	405	57.4	10.6	30.8
3-4 PM	3001	0.0	OFF	3001	0	1.73	94	55.8	37.5	37.5
4-5 PM	3085	0.0	OFF	3085	0	0.00	0	54.9	54.9	54.9
5-6 PM	3274	0.0	OFF	3274	0	0.00	0	53.0	53.0	53.0
6-7 PM	2419	0.0	OFF	2419	0	0.00	0	61.7	61.7	61.7
7-8 PM	1694	0.0	OFF	1694	0	0.00	0	63.2	63.2	63.2
8-9 PM	1426	0.0	OFF	1426	0	0.00	0	63.7	63.7	63.7
9-10 PM	1182	0.0	OFF	1182	0	0.00	0	64.2	64.2	64.2
10-11 PM	848	0.0	OFF	848	0	0.00	0	64.8	64.8	64.8
11PM-MID	553	0.0	OFF	553	0	0.00	0	65.3	65.3	65.3

"OFF" INDICATES NO ROAD WORK (ALL LANES OPEN TO TRAFFIC)

+ INDICATES QUEUEING EXCEEDS USER-SPECIFIED MAXIMUM LIMIT

----- SITE BREAKDOWN DELAYS -----	
BREAKDOWN DURATION (MINS)	0
RANGE OF QUEUE DELAY - MIN (VEH-H) MAX	0.0
AV BREAKDOWNS PER DAY	0.00
AV QUEUE DELAY/DAY (VEH-H)	0.0
AV TOTAL DELAY/DAY (VEH-H)	0.0

----- SITE ACCIDENT DELAYS -----	
BREAKDOWN DURATION (MINS)	0
RANGE OF QUEUE DELAY - MIN (VEH-H) MAX	0
AV BREAKDOWNS PER DAY	0
AV QUEUE DELAY/DAY (VEH-H)	0
AV TOTAL DELAY/DAY (VEH-H)	0

AVERAGE ACCIDENT NUMBERS (PIA/DAY)	
MAIN ROUTE WITHOUT WORKS	0.0243
MAIN ROUTE WITH WORKS	0.0211
'DIVERSION'	0.0062
PIA: Personal Injury Accidents	
IMPACTS ON ROAD USERS	
ROAD USER COSTS PER DAY	\$42,951
CONGESTED HOURS PER DAY*	5

*Delays Exceeding User-Specified Maximum

IH 43: STH 100 TO SILVER SPRING DR (MILWAUKEE COUNTY)
OFF-PEAK DAY CLOSURE
NO DIVERSION ROUTE (MAX QUEUE METHOD)

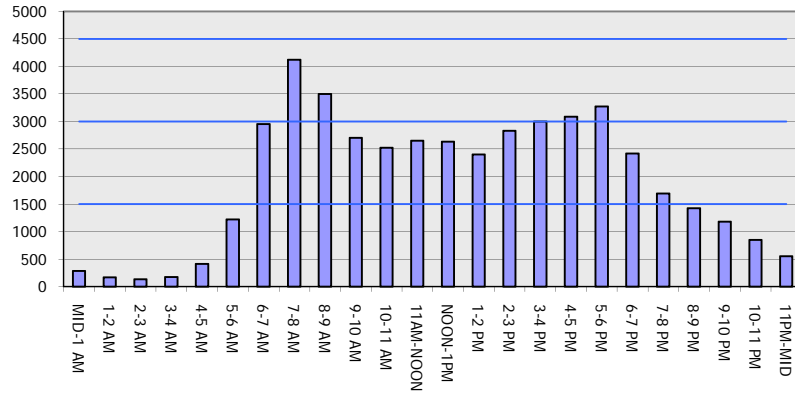
AUGUST

Analyzed for 2009
 Construction Season

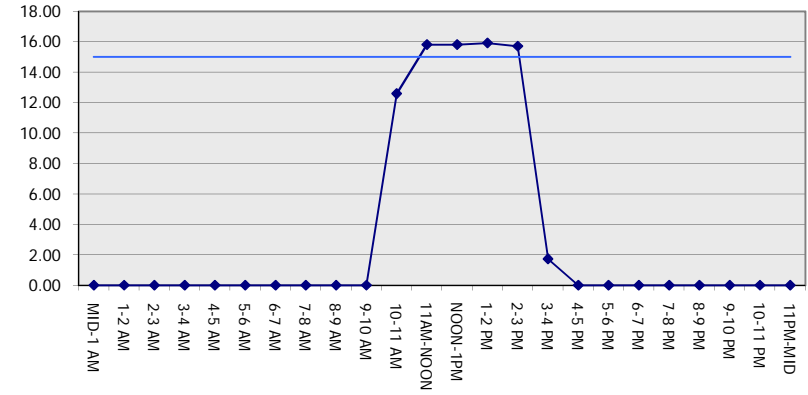
GRAPHICAL REPRESENTATION OF TRAFFIC MODEL INPUT AND OUTPUT

MON-THUR SOUTHBOUND DIRECTION

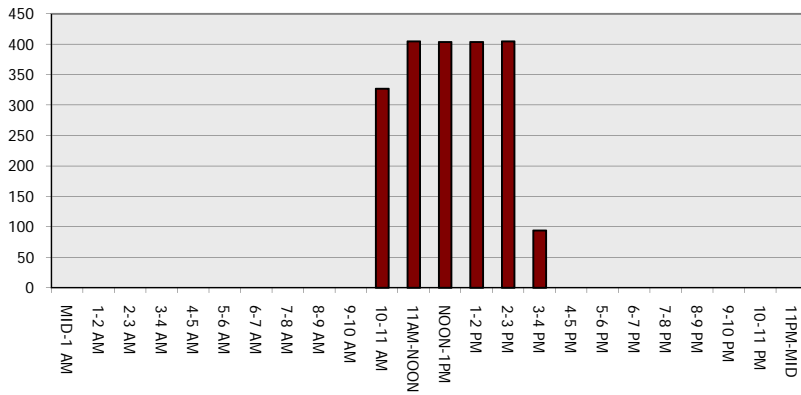
Main Route - Traffic Demand (Vehicles Per Hour)



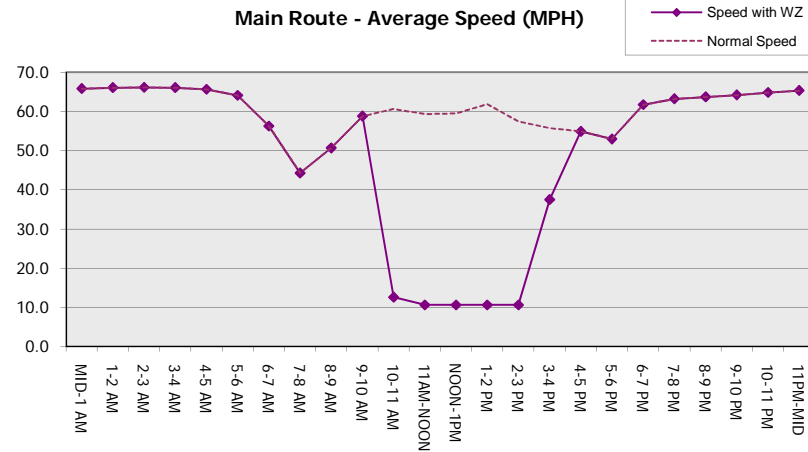
Main Route Average Delay Per Vehicle (Minutes)



Main Route - Average Queue Length (Vehicles)



Main Route - Average Speed (MPH)



IH 43: STH 100 TO SILVER SPRING DR (MILWAUKEE COUNTY) OFF-PEAK DAY CLOSURE NO DIVERSION ROUTE (MAX QUEUE METHOD)	AUGUST Analyzed for 2009 Construction Season
---	---

SUMMARY OF TRAFFIC MODEL OUTPUT

MON-THUR NORTHBOUND DIRECTION

TIME OF DAY	FLOWS AND CAPACITY IN VEH/HR						AVERAGE SPEEDS IN MPH			
	MAIN ROUTE		SITE CAPA CITY	FLOW		AV.DEL PER VEH (MINS)	AVERAGE QUEUE (VEH)	MAIN ROUTE		SITE
	DEMAND FLOW	PCT HEAVY		MAIN ROUTE	'DIVER TED'			WITHOUT WORK ZONE	WITH WORK ZONE	
MID-1 AM	458	0.0	OFF	458	0	0.00	0	65.5	65.5	65.5
1-2 AM	241	0.0	OFF	241	0	0.00	0	66.0	66.0	66.0
2-3 AM	195	0.0	OFF	195	0	0.00	0	66.0	66.0	66.0
3-4 AM	181	0.0	OFF	181	0	0.00	0	66.1	66.1	66.1
4-5 AM	295	0.0	OFF	295	0	0.00	0	65.8	65.8	65.8
5-6 AM	821	0.0	OFF	821	0	0.00	0	64.8	64.8	64.8
6-7 AM	1887	0.0	OFF	1887	0	0.00	0	62.8	62.8	62.8
7-8 AM	2770	0.0	OFF	2770	0	0.00	0	58.1	58.1	58.1
8-9 AM	2727	0.0	OFF	2727	0	0.00	0	58.6	58.6	58.6
9-10 AM	2293	0.0	OFF	2293	0	0.00	0	62.1	62.1	62.1
10-11 AM	2386	0.0	1499	1927	459	11.63+	308	61.9	13.5	30.8
11AM-NOON	2549	0.0	1499	1498	1051	15.84+	404	60.4	10.6	30.8
NOON-1PM	2589	0.0	1499	1498	1091	15.82+	404	60.0	10.6	30.8
1-2 PM	2600	0.0	1499	1498	1102	15.82+	404	59.9	10.6	30.8
2-3 PM	3048	0.0	1499	1497	1551	15.59+	405	55.3	10.6	30.8
3-4 PM	3550	0.0	OFF	3550	0	3.28	193	50.1	27.4	27.4
4-5 PM	3566	0.0	OFF	3566	0	0.00	0	50.0	50.0	50.0
5-6 PM	3801	0.0	OFF	3801	0	0.00	0	47.6	47.6	47.6
6-7 PM	2811	0.0	OFF	2811	0	0.00	0	57.7	57.7	57.7
7-8 PM	1961	0.0	OFF	1961	0	0.00	0	62.7	62.7	62.7
8-9 PM	1717	0.0	OFF	1717	0	0.00	0	63.2	63.2	63.2
9-10 PM	1515	0.0	OFF	1515	0	0.00	0	63.6	63.6	63.6
10-11 PM	1093	0.0	OFF	1093	0	0.00	0	64.3	64.3	64.3
11PM-MID	722	0.0	OFF	722	0	0.00	0	65.0	65.0	65.0

"OFF" INDICATES NO ROAD WORK (ALL LANES OPEN TO TRAFFIC)

+ INDICATES QUEUEING EXCEEDS USER-SPECIFIED MAXIMUM LIMIT

----- SITE BREAKDOWN DELAYS -----	
BREAKDOWN DURATION (MINS)	0
RANGE OF QUEUE DELAY - MIN (VEH-H) MAX	0.0
AV BREAKDOWNS PER DAY	0.00
AV QUEUE DELAY/DAY (VEH-H)	0.0
AV TOTAL DELAY/DAY (VEH-H)	0.0

----- SITE ACCIDENT DELAYS -----	
BREAKDOWN DURATION (MINS)	0
RANGE OF QUEUE DELAY - MIN (VEH-H) MAX	0
AV BREAKDOWNS PER DAY	0
AV QUEUE DELAY/DAY (VEH-H)	0
AV TOTAL DELAY/DAY (VEH-H)	0

AVERAGE ACCIDENT NUMBERS (PIA/DAY)	
MAIN ROUTE WITHOUT WORKS	0.0240
MAIN ROUTE WITH WORKS	0.0208
'DIVERSION'	0.0064

PIA: Personal Injury Accidents

ECONOMIC IMPACT ON ROAD USERS	
ROAD USER COSTS PER DAY	\$44,244
CONGESTED HOURS PER DAY*	5

*Delays Exceeding User-Specified Maximum

**IH 43: STH 100 TO SILVER SPRING DR (MILWAUKEE COUNTY)
 OFF-PEAK DAY CLOSURE
 NO DIVERSION ROUTE (MAX QUEUE METHOD)**

AUGUST
 Analyzed for 2009
 Construction Season

GRAPHICAL REPRESENTATION OF TRAFFIC MODEL INPUT AND OUTPUT
MON-THUR NORTHBOUND DIRECTION

