

**IH 43: SILVER SPRING DR TO STH 190 (MILWAUKEE COUNTY)  
OFF-PEAK DAY 2 LANE CLOSURE  
NO DIVERSION ROUTE (MAX QUEUE METHOD)**

**OCTOBER**  
Analyzed for 2009  
Construction Season

**SUMMARY OF TRAFFIC MODEL OUTPUT**  
SUNDAY SOUTHBOUND DIRECTION

TIME OF DAY	FLOWS AND CAPACITY IN VEH/HR						AVERAGE SPEEDS IN MPH				
	MAIN ROUTE		SITE CAPA CITY	FLOW		AV.DEL PER VEH (MINS)	AVERAGE QUEUE (VEH)	MAIN ROUTE		SITE	
	DEMAND FLOW	PCT HEAVY		MAIN ROUTE	'DIVER TED'			WITHOUT WORK ZONE	WITH WORK ZONE		
MID-1 AM	738	0.0	OFF	738	0	0.00	0	69.8	69.8	69.8	
1-2 AM	380	0.0	OFF	380	0	0.00	0	70.2	70.2	70.2	
2-3 AM	272	0.0	OFF	272	0	0.00	0	70.2	70.2	70.2	
3-4 AM	173	0.0	OFF	173	0	0.00	0	70.2	70.2	70.2	
4-5 AM	223	0.0	OFF	223	0	0.00	0	70.2	70.2	70.2	
5-6 AM	369	0.0	OFF	369	0	0.00	0	70.2	70.2	70.2	
6-7 AM	644	0.0	OFF	644	0	0.00	0	69.9	69.9	69.9	
7-8 AM	958	0.0	OFF	958	0	0.00	0	69.6	69.6	69.6	
8-9 AM	1395	0.0	OFF	1395	0	0.00	0	69.0	69.0	69.0	
9-10 AM	2133	0.0	1499	1940	192	8.58+	242	68.1	17.6	30.8	
10-11 AM	2701	0.0	1500	1500	1201	16.31+	400	67.4	10.6	30.8	
11AM-NOON	3205	0.0	1500	1500	1705	16.28+	400	66.8	10.6	30.8	
NOON-1PM	3433	0.0	1500	1500	1933	16.27+	400	66.4	10.6	30.8	
1-2 PM	3433	0.0	1500	1500	1933	16.27+	400	66.4	10.6	30.8	
2-3 PM	3468	0.0	1500	1500	1968	16.27+	400	66.4	10.6	30.8	
3-4 PM	3632	0.0	1500	1500	2132	16.25+	400	66.1	10.6	30.8	
4-5 PM	3659	0.0	1500	1500	2159	16.24+	400	65.8	10.6	30.8	
5-6 PM	3564	0.0	1500	1500	2064	16.26+	400	66.3	10.6	30.8	
6-7 PM	3447	0.0	1500	1500	1947	16.27+	400	66.4	10.6	30.8	
7-8 PM	2571	0.0	OFF	2571	0	0.31	28	67.6	61.3	61.3	
8-9 PM	1695	0.0	OFF	1695	0	0.00	0	68.6	68.6	68.6	
9-10 PM	1373	0.0	OFF	1373	0	0.00	0	69.1	69.1	69.1	
10-11 PM	864	0.0	OFF	864	0	0.00	0	69.7	69.7	69.7	
11PM-MID	644	0.0	OFF	644	0	0.00	0	69.9	69.9	69.9	

"OFF" INDICATES NO ROAD WORK (ALL LANES OPEN TO TRAFFIC)

+ INDICATES QUEUEING EXCEEDS USER-SPECIFIED MAXIMUM LIMIT

*----- SITE BREAKDOWN DELAYS -----*	
BREAKDOWN DURATION (MINS)	0
RANGE OF QUEUE DELAY - MIN (VEH-H) MAX	0.0
AV BREAKDOWNS PER DAY	0.00
AV QUEUE DELAY/DAY (VEH-H)	0.0
AV TOTAL DELAY/DAY (VEH-H)	0.0

*----- SITE ACCIDENT DELAYS -----*	
BREAKDOWN DURATION (MINS)	0
RANGE OF QUEUE DELAY - MIN (VEH-H) MAX	0
AV BREAKDOWNS PER DAY	0
AV QUEUE DELAY/DAY (VEH-H)	0
AV TOTAL DELAY/DAY (VEH-H)	0

AVERAGE ACCIDENT NUMBERS (PIA/DAY)	
MAIN ROUTE WITHOUT WORKS	0.0243
MAIN ROUTE WITH WORKS	0.0140
'DIVERSION'	0.0216
PIA: Personal Injury Accidents	
IMPACTS ON ROAD USERS	
ROAD USER COSTS PER DAY	\$143,261
CONGESTED HOURS PER DAY*	10

\*Delays Exceeding User-Specified Maximum

**IH 43: SILVER SPRING DR TO STH 190 (MILWAUKEE COUNTY)**  
**OFF-PEAK DAY 2 LANE CLOSURE**  
**NO DIVERSION ROUTE (MAX QUEUE METHOD)**

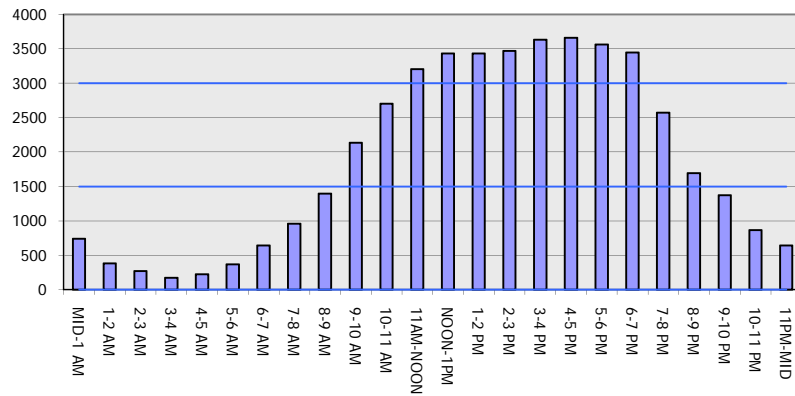
**OCTOBER**

Analyzed for 2009  
 Construction Season

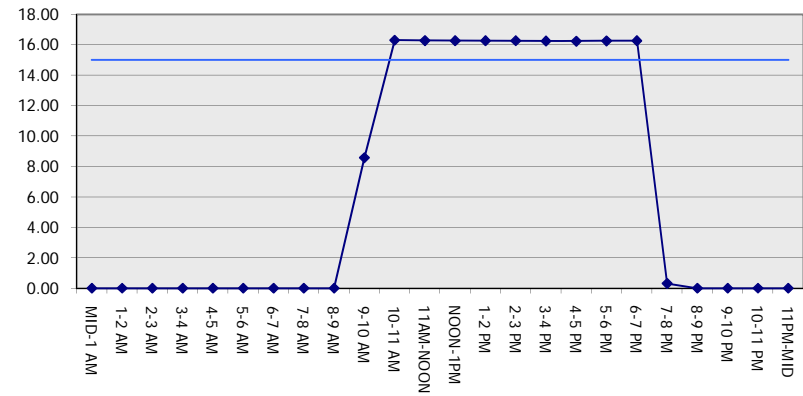
**GRAPHICAL REPRESENTATION OF TRAFFIC MODEL INPUT AND OUTPUT**

**SUNDAY SOUTHBOUND DIRECTION**

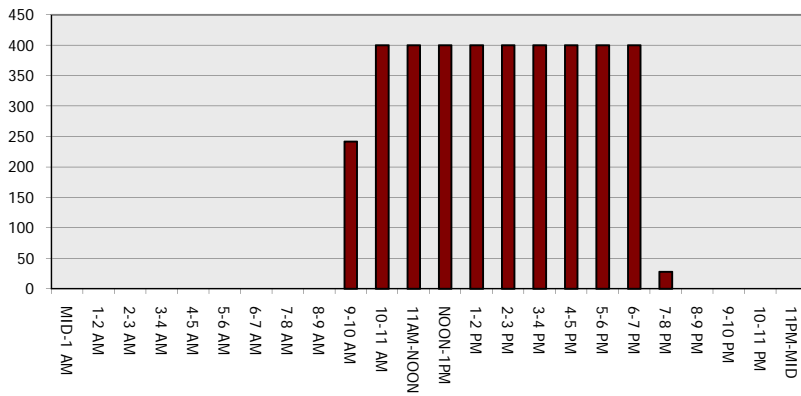
**Main Route - Traffic Demand (Vehicles Per Hour)**



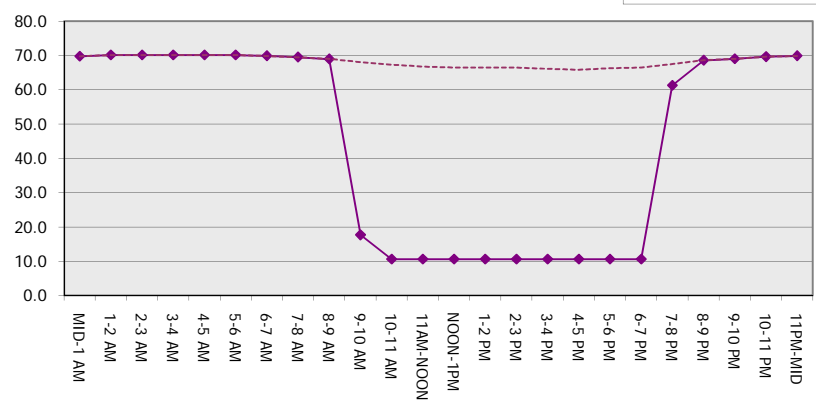
**Main Route Average Delay Per Vehicle (Minutes)**



**Main Route - Average Queue Length (Vehicles)**



**Main Route - Average Speed (MPH)**



<b>IH 43: SILVER SPRING DR TO STH 190 (MILWAUKEE COUNTY)</b> <b>OFF-PEAK DAY 2 LANE CLOSURE</b> <b>NO DIVERSION ROUTE (MAX QUEUE METHOD)</b>	<b>OCTOBER</b>
	Analyzed for 2009 Construction Season

**SUMMARY OF TRAFFIC MODEL OUTPUT**

SUNDAY NORTHBOUND DIRECTION

TIME OF DAY	FLOWS AND CAPACITY IN VEH/HR						AVERAGE SPEEDS IN MPH			
	MAIN ROUTE		SITE CAPA CITY	FLOW		AV.DEL PER VEH (MINS)	AVERAGE QUEUE (VEH)	MAIN ROUTE		SITE
	DEMAND FLOW	PCT HEAVY		MAIN ROUTE	'DIVER TED'			WITHOUT WORK ZONE	WITH WORK ZONE	
MID-1 AM	1075	0.0	OFF	1075	0	0.00	0	69.4	69.4	69.4
1-2 AM	699	0.0	OFF	699	0	0.00	0	69.9	69.9	69.9
2-3 AM	766	0.0	OFF	766	0	0.00	0	69.8	69.8	69.8
3-4 AM	419	0.0	OFF	419	0	0.00	0	70.2	70.2	70.2
4-5 AM	276	0.0	OFF	276	0	0.00	0	70.2	70.2	70.2
5-6 AM	411	0.0	OFF	411	0	0.00	0	70.2	70.2	70.2
6-7 AM	809	0.0	OFF	809	0	0.00	0	69.7	69.7	69.7
7-8 AM	1190	0.0	OFF	1190	0	0.00	0	69.2	69.2	69.2
8-9 AM	1652	0.0	OFF	1652	0	0.00	0	68.7	68.7	68.7
9-10 AM	2076	0.0	1499	1954	122	8.62+	242	68.1	17.6	30.8
10-11 AM	2448	0.0	1500	1500	948	16.33+	400	67.7	10.6	30.8
11AM-NOON	2823	0.0	1500	1500	1323	16.30+	400	67.3	10.6	30.8
NOON-1PM	3037	0.0	1500	1500	1537	16.29+	400	66.9	10.6	30.8
1-2 PM	3189	0.0	1500	1500	1689	16.28+	400	66.8	10.6	30.8
2-3 PM	3158	0.0	1500	1500	1658	16.29+	400	66.8	10.6	30.8
3-4 PM	3231	0.0	1500	1500	1731	16.28+	400	66.7	10.6	30.8
4-5 PM	3016	0.0	1500	1500	1516	16.29+	400	67.0	10.6	30.8
5-6 PM	2735	0.0	1500	1500	1235	16.31+	400	67.3	10.6	30.8
6-7 PM	2503	0.0	1500	1500	1003	16.32+	400	67.6	10.6	30.8
7-8 PM	2136	0.0	OFF	2136	0	0.29	26	68.1	62.0	62.0
8-9 PM	1632	0.0	OFF	1632	0	0.00	0	68.7	68.7	68.7
9-10 PM	1411	0.0	OFF	1411	0	0.00	0	69.0	69.0	69.0
10-11 PM	1128	0.0	OFF	1128	0	0.00	0	69.3	69.3	69.3
11PM-MID	811	0.0	OFF	811	0	0.00	0	69.7	69.7	69.7

"OFF" INDICATES NO ROAD WORK (ALL LANES OPEN TO TRAFFIC)

+ INDICATES QUEUEING EXCEEDS USER-SPECIFIED MAXIMUM LIMIT

*----- SITE BREAKDOWN DELAYS -----*	
BREAKDOWN DURATION (MINS)	0
RANGE OF QUEUE DELAY - MIN (VEH-H) MAX	0.0
AV BREAKDOWNS PER DAY	0.00
AV QUEUE DELAY/DAY (VEH-H)	0.0
AV TOTAL DELAY/DAY (VEH-H)	0.0

*----- SITE ACCIDENT DELAYS -----*	
BREAKDOWN DURATION (MINS)	0
RANGE OF QUEUE DELAY - MIN (VEH-H) MAX	0
AV BREAKDOWNS PER DAY	0
AV QUEUE DELAY/DAY (VEH-H)	0
AV TOTAL DELAY/DAY (VEH-H)	0

AVERAGE ACCIDENT NUMBERS (PIA/DAY)	
MAIN ROUTE WITHOUT WORKS	0.0231
MAIN ROUTE WITH WORKS	0.0151
'DIVERSION'	0.0160

PIA: Personal Injury Accidents

ECONOMIC IMPACT ON ROAD USERS	
ROAD USER COSTS PER DAY	\$123,432
CONGESTED HOURS PER DAY*	10

\*Delays Exceeding User-Specified Maximum

**IH 43: SILVER SPRING DR TO STH 190 (MILWAUKEE COUNTY)**  
**OFF-PEAK DAY 2 LANE CLOSURE**  
**NO DIVERSION ROUTE (MAX QUEUE METHOD)**

**OCTOBER**

Analyzed for 2009  
 Construction Season

**GRAPHICAL REPRESENTATION OF TRAFFIC MODEL INPUT AND OUTPUT**  
**SUNDAY NORTHBOUND DIRECTION**

