

IH 43: SILVER SPRING DR TO STH 190 (MILWAUKEE COUNTY) OFF-PEAK DAY 2 LANE CLOSURE NO DIVERSION ROUTE (MAX QUEUE METHOD)	OCTOBER
	Analyzed for 2009 Construction Season

SUMMARY OF TRAFFIC MODEL OUTPUT	
FRIDAY	SOUTHBOUND DIRECTION

TIME OF DAY	FLOWS AND CAPACITY IN VEH/HR						AVERAGE SPEEDS IN MPH			
	MAIN ROUTE		SITE CAPA CITY	FLOW		AV.DEL PER VEH (MINS)	AVERAGE QUEUE (VEH)	MAIN ROUTE		SITE
	DEMAND FLOW	PCT HEAVY		MAIN ROUTE	'DIVER TED'			WITHOUT WORK ZONE	WITH WORK ZONE	
MID-1 AM	441	0.0	OFF	441	0	0.00	0	70.2	70.2	70.2
1-2 AM	250	0.0	OFF	250	0	0.00	0	70.2	70.2	70.2
2-3 AM	210	0.0	OFF	210	0	0.00	0	70.2	70.2	70.2
3-4 AM	235	0.0	OFF	235	0	0.00	0	70.2	70.2	70.2
4-5 AM	517	0.0	OFF	517	0	0.00	0	70.1	70.1	70.1
5-6 AM	1429	0.0	OFF	1429	0	0.00	0	68.9	68.9	68.9
6-7 AM	3727	0.0	OFF	3727	0	0.00	0	65.4	65.4	65.4
7-8 AM	5613	0.0	OFF	5613	0	0.00	0	52.5	52.5	52.5
8-9 AM	4559	0.0	OFF	4559	0	0.00	0	59.7	59.7	59.7
9-10 AM	3428	0.0	OFF	3428	0	0.00	0	66.4	66.4	66.4
10-11 AM	3232	0.0	1499	1550	1682	16.48+	412	66.7	10.4	36.6
11AM-NOON	3324	0.0	1499	1633	1691	14.36+	379	66.6	11.7	35.9
NOON-1PM	3542	0.0	1499	1689	1853	15.74+	388	66.3	10.8	30.8
1-2 PM	3689	0.0	1500	1500	2189	16.23+	400	65.6	10.6	30.8
2-3 PM	4163	0.0	1500	1500	2663	16.07+	400	62.4	10.6	30.8
3-4 PM	4456	0.0	OFF	4456	0	0.60	44	60.4	51.3	51.3
4-5 PM	4561	0.0	OFF	4561	0	0.00	0	59.7	59.7	59.7
5-6 PM	4494	0.0	OFF	4494	0	0.00	0	60.2	60.2	60.2
6-7 PM	3886	0.0	OFF	3886	0	0.00	0	64.3	64.3	64.3
7-8 PM	2733	0.0	OFF	2733	0	0.00	0	67.3	67.3	67.3
8-9 PM	2025	0.0	OFF	2025	0	0.00	0	68.2	68.2	68.2
9-10 PM	1834	0.0	OFF	1834	0	0.00	0	68.4	68.4	68.4
10-11 PM	1518	0.0	OFF	1518	0	0.00	0	68.9	68.9	68.9
11PM-MID	1020	0.0	OFF	1020	0	0.00	0	69.5	69.5	69.5

"OFF" INDICATES NO ROAD WORK (ALL LANES OPEN TO TRAFFIC)

+ INDICATES QUEUEING EXCEEDS USER-SPECIFIED MAXIMUM LIMIT

----- SITE BREAKDOWN DELAYS -----	
BREAKDOWN DURATION (MINS)	0
RANGE OF QUEUE DELAY - MIN (VEH-H) MAX	0.0
AV BREAKDOWNS PER DAY	0.00
AV QUEUE DELAY/DAY (VEH-H)	0.0
AV TOTAL DELAY/DAY (VEH-H)	0.0

----- SITE ACCIDENT DELAYS -----	
BREAKDOWN DURATION (MINS)	0
RANGE OF QUEUE DELAY - MIN (VEH-H) MAX	0
AV BREAKDOWNS PER DAY	0
AV QUEUE DELAY/DAY (VEH-H)	0
AV TOTAL DELAY/DAY (VEH-H)	0

AVERAGE ACCIDENT NUMBERS (PIA/DAY)	
MAIN ROUTE WITHOUT WORKS	0.0351
MAIN ROUTE WITH WORKS	0.0291
'DIVERSION'	0.0126
PIA: Personal Injury Accidents	
IMPACTS ON ROAD USERS	
ROAD USER COSTS PER DAY	\$63,055
CONGESTED HOURS PER DAY*	5

*Delays Exceeding User-Specified Maximum

IH 43: SILVER SPRING DR TO STH 190 (MILWAUKEE COUNTY)
OFF-PEAK DAY 2 LANE CLOSURE
NO DIVERSION ROUTE (MAX QUEUE METHOD)

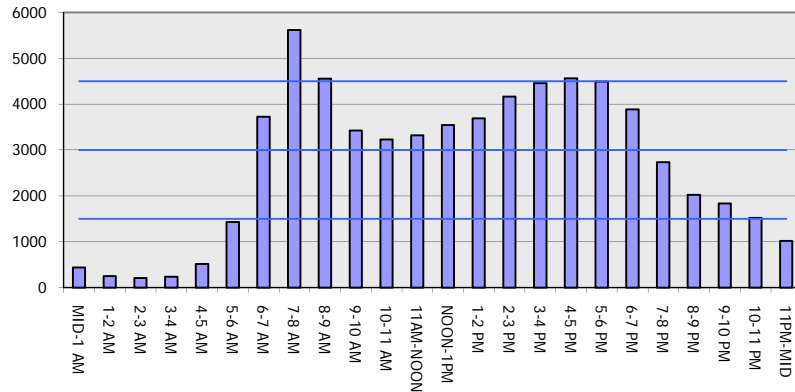
OCTOBER

Analyzed for 2009
 Construction Season

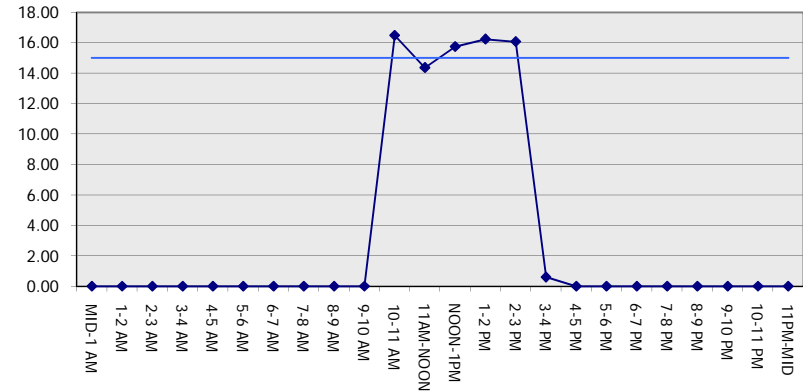
GRAPHICAL REPRESENTATION OF TRAFFIC MODEL INPUT AND OUTPUT

FRIDAY SOUTHBOUND DIRECTION

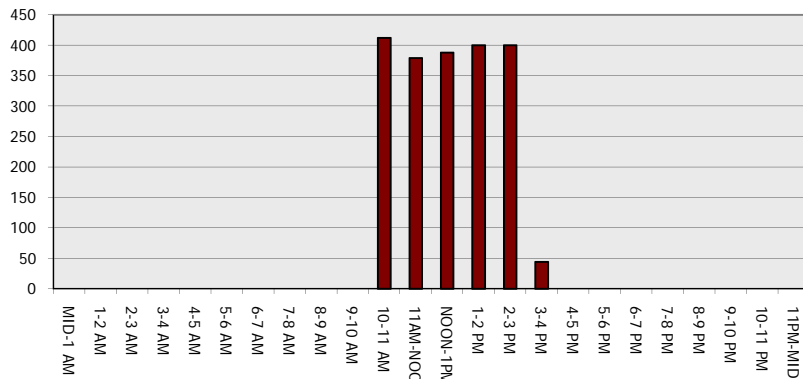
Main Route - Traffic Demand (Vehicles Per Hour)



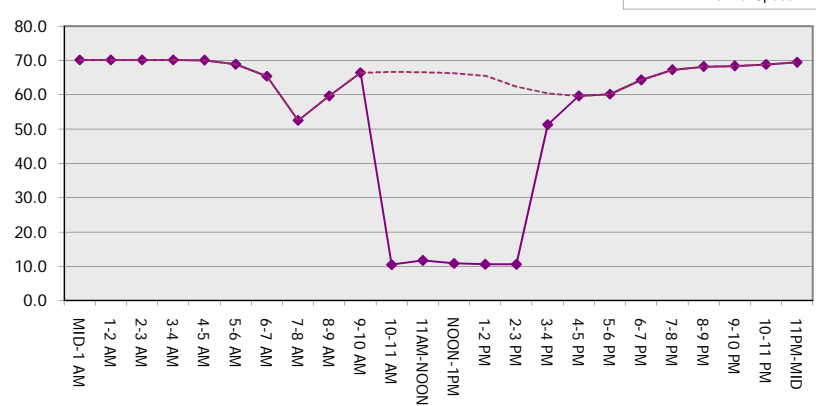
Main Route Average Delay Per Vehicle (Minutes)



Main Route - Average Queue Length (Vehicles)



Main Route - Average Speed (MPH)



IH 43: SILVER SPRING DR TO STH 190 (MILWAUKEE COUNTY) OFF-PEAK DAY 2 LANE CLOSURE NO DIVERSION ROUTE (MAX QUEUE METHOD)	OCTOBER
	Analyzed for 2009 Construction Season

SUMMARY OF TRAFFIC MODEL OUTPUT

FRIDAY NORTHBOUND DIRECTION

TIME OF DAY	FLOWS AND CAPACITY IN VEH/HR						AVERAGE SPEEDS IN MPH			
	MAIN ROUTE		SITE CAPA CITY	FLOW		AV.DEL PER VEH (MINS)	AVERAGE QUEUE (VEH)	MAIN ROUTE		SITE
	DEMAND FLOW	PCT HEAVY		MAIN ROUTE	'DIVER TED'			WITHOUT WORK ZONE	WITH WORK ZONE	
MID-1 AM	695	0.0	OFF	695	0	0.00	0	69.9	69.9	69.9
1-2 AM	497	0.0	OFF	497	0	0.00	0	70.1	70.1	70.1
2-3 AM	424	0.0	OFF	424	0	0.00	0	70.2	70.2	70.2
3-4 AM	391	0.0	OFF	391	0	0.00	0	70.2	70.2	70.2
4-5 AM	523	0.0	OFF	523	0	0.00	0	70.1	70.1	70.1
5-6 AM	1526	0.0	OFF	1526	0	0.00	0	68.8	68.8	68.8
6-7 AM	3395	0.0	OFF	3395	0	0.00	0	66.5	66.5	66.5
7-8 AM	4663	0.0	OFF	4663	0	0.00	0	59.0	59.0	59.0
8-9 AM	3986	0.0	OFF	3986	0	0.00	0	63.7	63.7	63.7
9-10 AM	3253	0.0	OFF	3253	0	0.00	0	66.7	66.7	66.7
10-11 AM	3428	0.0	1499	1550	1878	16.47+	412	66.4	10.4	36.6
11AM-NOON	3760	0.0	1499	1686	2074	14.39+	378	65.1	11.6	35.8
NOON-1PM	4097	0.0	1499	1500	2597	15.74+	399	62.8	10.7	38.0
1-2 PM	4230	0.0	1500	1500	2730	15.69+	400	62.0	10.7	38.0
2-3 PM	4895	0.0	1500	1500	3395	15.43+	400	57.4	10.7	38.0
3-4 PM	5583	0.0	OFF	5583	0	0.79	66	52.7	43.8	43.8
4-5 PM	5842	0.0	OFF	5842	0	0.00	0	50.9	50.9	50.9
5-6 PM	5489	0.0	OFF	5489	0	0.00	0	53.3	53.3	53.3
6-7 PM	4020	0.0	OFF	4020	0	0.00	0	63.4	63.4	63.4
7-8 PM	2989	0.0	OFF	2989	0	0.00	0	67.0	67.0	67.0
8-9 PM	2487	0.0	OFF	2487	0	0.00	0	67.6	67.6	67.6
9-10 PM	2433	0.0	OFF	2433	0	0.00	0	67.7	67.7	67.7
10-11 PM	1841	0.0	OFF	1841	0	0.00	0	68.4	68.4	68.4
11PM-MID	1214	0.0	OFF	1214	0	0.00	0	69.2	69.2	69.2

"OFF" INDICATES NO ROAD WORK (ALL LANES OPEN TO TRAFFIC)

+ INDICATES QUEUEING EXCEEDS USER-SPECIFIED MAXIMUM LIMIT

----- SITE BREAKDOWN DELAYS -----	
BREAKDOWN DURATION (MINS)	0
RANGE OF QUEUE DELAY - MIN (VEH-H) MAX	0.0
AV BREAKDOWNS PER DAY	0.00
AV QUEUE DELAY/DAY (VEH-H)	0.0
AV TOTAL DELAY/DAY (VEH-H)	0.0

----- SITE ACCIDENT DELAYS -----	
BREAKDOWN DURATION (MINS)	0
RANGE OF QUEUE DELAY - MIN (VEH-H) MAX	0
AV BREAKDOWNS PER DAY	0
AV QUEUE DELAY/DAY (VEH-H)	0
AV TOTAL DELAY/DAY (VEH-H)	0

AVERAGE ACCIDENT NUMBERS (PIA/DAY)	
MAIN ROUTE WITHOUT WORKS	0.0388
MAIN ROUTE WITH WORKS	0.0314
'DIVERSION'	0.0159

PIA: Personal Injury Accidents

ECONOMIC IMPACT ON ROAD USERS	
ROAD USER COSTS PER DAY	\$70,804
CONGESTED HOURS PER DAY*	5

*Delays Exceeding User-Specified Maximum

IH 43: SILVER SPRING DR TO STH 190 (MILWAUKEE COUNTY)
OFF-PEAK DAY 2 LANE CLOSURE
NO DIVERSION ROUTE (MAX QUEUE METHOD)

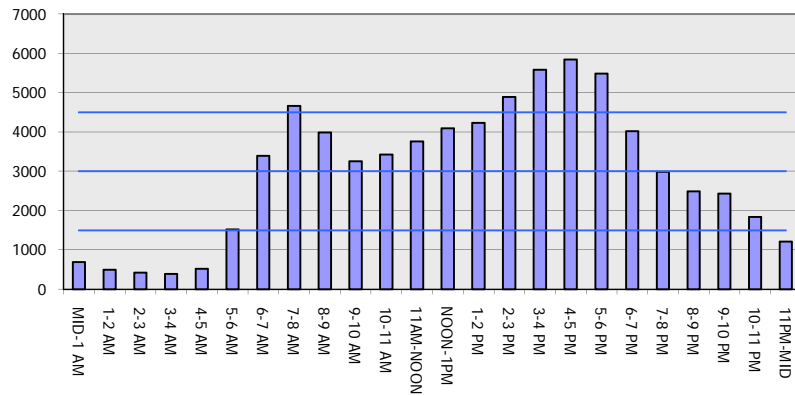
OCTOBER

Analyzed for 2009
 Construction Season

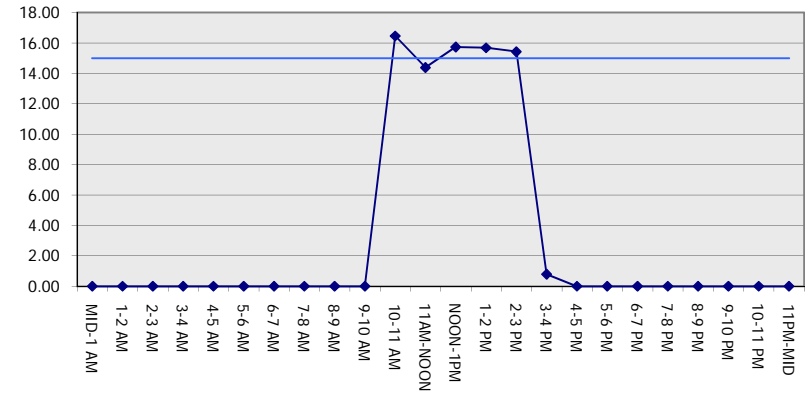
GRAPHICAL REPRESENTATION OF TRAFFIC MODEL INPUT AND OUTPUT

FRIDAY NORTHBOUND DIRECTION

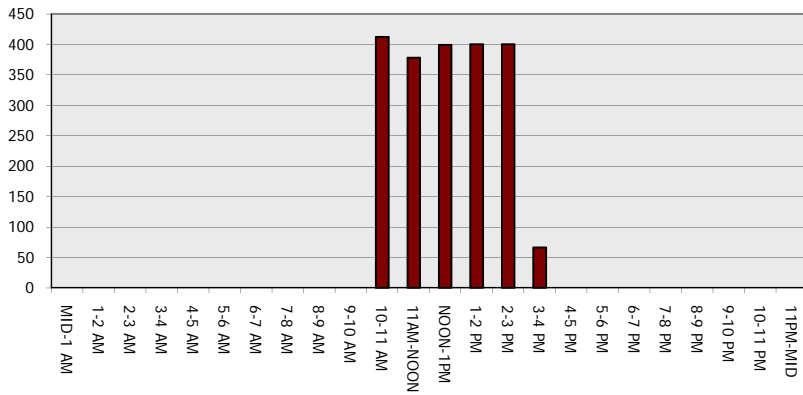
Main Route - Traffic Demand (Vehicles Per Hour)



Main Route Average Delay Per Vehicle (Minutes)



Main Route - Average Queue Length (Vehicles)



Main Route - Average Speed (MPH)

