

<b>IH 43: SILVER SPRING DR TO STH 190 (MILWAUKEE COUNTY)</b> <b>OFF-PEAK DAY 2 LANE CLOSURE</b> <b>NO DIVERSION ROUTE (MAX QUEUE METHOD)</b>	<b>AUGUST</b>
	Analyzed for 2009 Construction Season

**SUMMARY OF TRAFFIC MODEL OUTPUT**

SUNDAY SOUTHBOUND DIRECTION

TIME OF DAY	FLOWS AND CAPACITY IN VEH/HR						AVERAGE SPEEDS IN MPH				
	MAIN ROUTE		SITE CAPA CITY	FLOW		AV.DEL PER VEH (MINS)	AVERAGE QUEUE (VEH)	MAIN ROUTE		SITE	
	DEMAND FLOW	PCT HEAVY		MAIN ROUTE	'DIVER TED'			WITHOUT WORK ZONE	WITH WORK ZONE		
MID-1 AM	1046	0.0	OFF	1046	0	0.00	0	69.4	69.4	69.4	
1-2 AM	565	0.0	OFF	565	0	0.00	0	70.0	70.0	70.0	
2-3 AM	269	0.0	OFF	269	0	0.00	0	70.2	70.2	70.2	
3-4 AM	205	0.0	OFF	205	0	0.00	0	70.2	70.2	70.2	
4-5 AM	240	0.0	OFF	240	0	0.00	0	70.2	70.2	70.2	
5-6 AM	397	0.0	OFF	397	0	0.00	0	70.2	70.2	70.2	
6-7 AM	690	0.0	OFF	690	0	0.00	0	69.9	69.9	69.9	
7-8 AM	979	0.0	OFF	979	0	0.00	0	69.5	69.5	69.5	
8-9 AM	1437	0.0	OFF	1437	0	0.00	0	68.9	68.9	68.9	
9-10 AM	2311	0.0	1499	1809	502	10.12+	277	67.9	15.5	31.6	
10-11 AM	2987	0.0	1500	1500	1487	16.19+	400	67.0	10.6	32.5	
11AM-NOON	3359	0.0	1499	1500	1859	16.17+	400	66.6	10.6	32.5	
NOON-1PM	3768	0.0	1500	1500	2268	16.10+	400	65.1	10.6	32.5	
1-2 PM	3663	0.0	1500	1500	2163	16.14+	400	65.8	10.6	32.5	
2-3 PM	3832	0.0	1500	1500	2332	16.08+	400	64.6	10.6	32.5	
3-4 PM	3721	0.0	1500	1500	2221	16.12+	400	65.5	10.6	32.5	
4-5 PM	3743	0.0	1500	1500	2243	16.11+	400	65.3	10.6	32.5	
5-6 PM	3302	0.0	1500	1500	1802	16.17+	400	66.6	10.6	32.5	
6-7 PM	3201	0.0	1500	1500	1701	16.18+	400	66.8	10.6	32.5	
7-8 PM	2487	0.0	OFF	2487	0	0.15	13	67.6	64.4	64.4	
8-9 PM	2115	0.0	OFF	2115	0	0.00	0	68.1	68.1	68.1	
9-10 PM	1626	0.0	OFF	1626	0	0.00	0	68.7	68.7	68.7	
10-11 PM	1080	0.0	OFF	1080	0	0.00	0	69.4	69.4	69.4	
11PM-MID	671	0.0	OFF	671	0	0.00	0	69.9	69.9	69.9	

"OFF" INDICATES NO ROAD WORK (ALL LANES OPEN TO TRAFFIC)

+ INDICATES QUEUEING EXCEEDS USER-SPECIFIED MAXIMUM LIMIT

*----- SITE BREAKDOWN DELAYS -----*	
BREAKDOWN DURATION (MINS)	0
RANGE OF QUEUE DELAY - MIN (VEH-H) MAX	0.0
AV BREAKDOWNS PER DAY	0.00
AV QUEUE DELAY/DAY (VEH-H)	0.0
AV TOTAL DELAY/DAY (VEH-H)	0.0

*----- SITE ACCIDENT DELAYS -----*	
BREAKDOWN DURATION (MINS)	0
RANGE OF QUEUE DELAY - MIN (VEH-H) MAX	0
AV BREAKDOWNS PER DAY	0
AV QUEUE DELAY/DAY (VEH-H)	0
AV TOTAL DELAY/DAY (VEH-H)	0

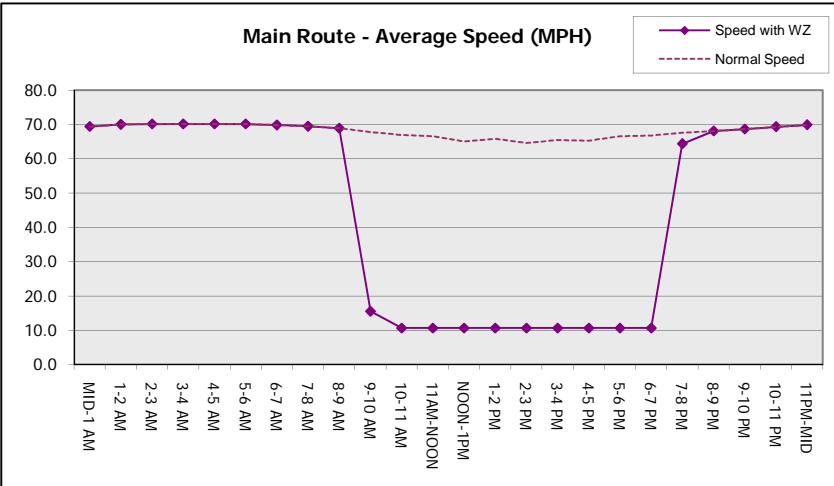
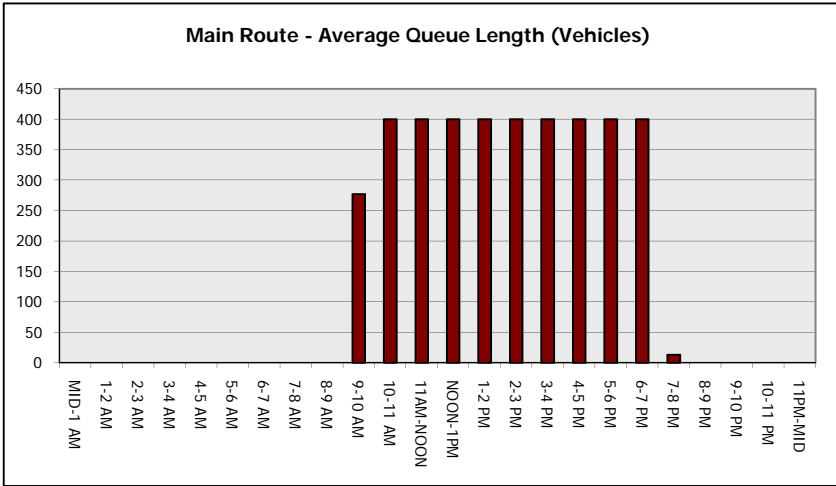
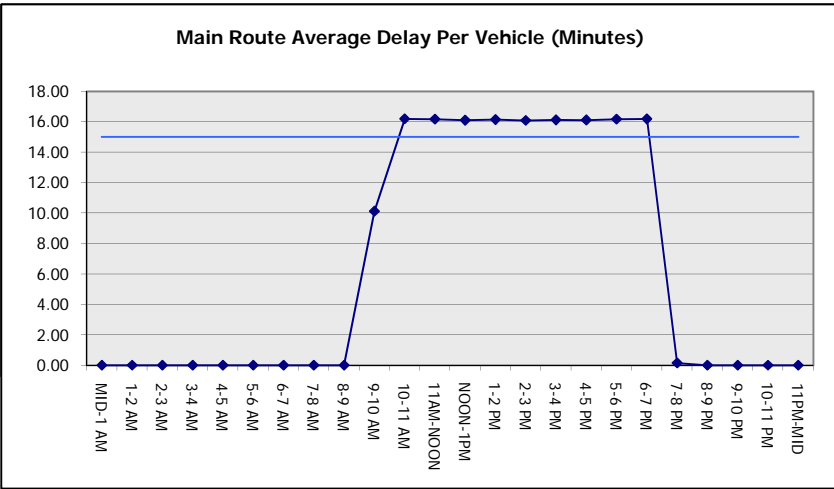
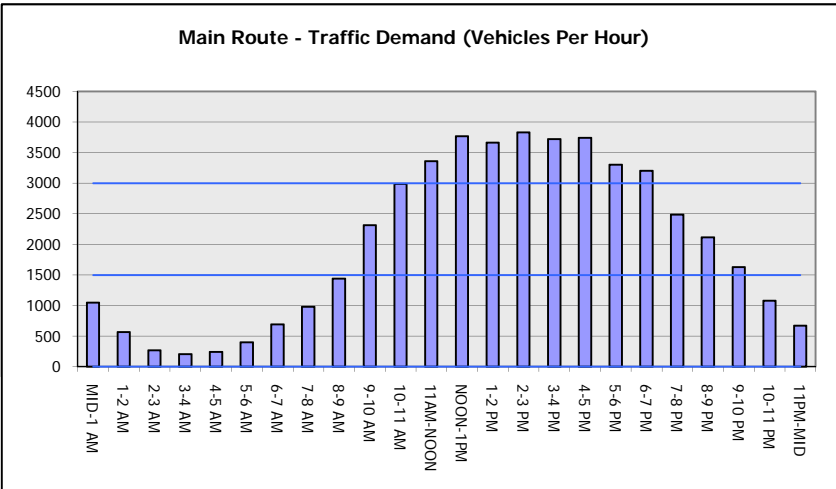
AVERAGE ACCIDENT NUMBERS (PIA/DAY)	
MAIN ROUTE WITHOUT WORKS	0.0258
MAIN ROUTE WITH WORKS	0.0147
'DIVERSION'	0.0233
PIA: Personal Injury Accidents	
IMPACTS ON ROAD USERS	
ROAD USER COSTS PER DAY	\$147,505
CONGESTED HOURS PER DAY*	10

\*Delays Exceeding User-Specified Maximum

**IH 43: SILVER SPRING DR TO STH 190 (MILWAUKEE COUNTY)**  
**OFF-PEAK DAY 2 LANE CLOSURE**  
**NO DIVERSION ROUTE (MAX QUEUE METHOD)**

**AUGUST**  
 Analyzed for 2009  
 Construction Season

**GRAPHICAL REPRESENTATION OF TRAFFIC MODEL INPUT AND OUTPUT**  
**SUNDAY SOUTHBOUND DIRECTION**



<b>IH 43: SILVER SPRING DR TO STH 190 (MILWAUKEE COUNTY)</b> <b>OFF-PEAK DAY 2 LANE CLOSURE</b> <b>NO DIVERSION ROUTE (MAX QUEUE METHOD)</b>	<b>AUGUST</b>
	Analyzed for 2009 Construction Season

**SUMMARY OF TRAFFIC MODEL OUTPUT**

SUNDAY NORTHBOUND DIRECTION

TIME OF DAY	FLOWS AND CAPACITY IN VEH/HR						AVERAGE SPEEDS IN MPH			
	MAIN ROUTE		SITE CAPA CITY	FLOW		AV.DEL PER VEH (MINS)	AVERAGE QUEUE (VEH)	MAIN ROUTE		SITE
	DEMAND FLOW	PCT HEAVY		MAIN ROUTE	'DIVER TED'			WITHOUT WORK ZONE	WITH WORK ZONE	
MID-1 AM	1142	0.0	OFF	1142	0	0.00	0	69.3	69.3	69.3
1-2 AM	728	0.0	OFF	728	0	0.00	0	69.8	69.8	69.8
2-3 AM	686	0.0	OFF	686	0	0.00	0	69.9	69.9	69.9
3-4 AM	346	0.0	OFF	346	0	0.00	0	70.2	70.2	70.2
4-5 AM	254	0.0	OFF	254	0	0.00	0	70.2	70.2	70.2
5-6 AM	386	0.0	OFF	386	0	0.00	0	70.2	70.2	70.2
6-7 AM	598	0.0	OFF	598	0	0.00	0	70.0	70.0	70.0
7-8 AM	838	0.0	OFF	838	0	0.00	0	69.7	69.7	69.7
8-9 AM	1181	0.0	OFF	1181	0	0.00	0	69.2	69.2	69.2
9-10 AM	1707	0.0	1499	1707	0	3.19	70	68.6	33.1	30.8
10-11 AM	2229	0.0	1500	1725	503	14.97+	372	67.9	11.4	31.7
11AM-NOON	2735	0.0	1499	1500	1235	16.31+	399	67.3	10.6	30.8
NOON-1PM	2957	0.0	1500	1500	1457	16.30+	400	67.1	10.6	30.8
1-2 PM	3243	0.0	1500	1500	1743	16.28+	400	66.7	10.6	30.8
2-3 PM	3029	0.0	1500	1500	1529	16.29+	400	66.9	10.6	30.8
3-4 PM	3181	0.0	1500	1500	1681	16.28+	400	66.8	10.6	30.8
4-5 PM	3108	0.0	1500	1500	1608	16.29+	400	66.9	10.6	30.8
5-6 PM	2881	0.0	1500	1500	1381	16.30+	400	67.1	10.6	30.8
6-7 PM	2621	0.0	1500	1500	1121	16.32+	400	67.5	10.6	30.8
7-8 PM	2239	0.0	OFF	2239	0	0.27	24	67.9	62.3	62.3
8-9 PM	1935	0.0	OFF	1935	0	0.00	0	68.3	68.3	68.3
9-10 PM	1797	0.0	OFF	1797	0	0.00	0	68.5	68.5	68.5
10-11 PM	1426	0.0	OFF	1426	0	0.00	0	68.9	68.9	68.9
11PM-MID	996	0.0	OFF	996	0	0.00	0	69.5	69.5	69.5

"OFF" INDICATES NO ROAD WORK (ALL LANES OPEN TO TRAFFIC)

+ INDICATES QUEUEING EXCEEDS USER-SPECIFIED MAXIMUM LIMIT

*----- SITE BREAKDOWN DELAYS -----*	
BREAKDOWN DURATION (MINS)	0
RANGE OF QUEUE DELAY - MIN (VEH-H) MAX	0.0
AV BREAKDOWNS PER DAY	0.00
AV QUEUE DELAY/DAY (VEH-H)	0.0
AV TOTAL DELAY/DAY (VEH-H)	0.0

*----- SITE ACCIDENT DELAYS -----*	
BREAKDOWN DURATION (MINS)	0
RANGE OF QUEUE DELAY - MIN (VEH-H) MAX	0
AV BREAKDOWNS PER DAY	0
AV QUEUE DELAY/DAY (VEH-H)	0
AV TOTAL DELAY/DAY (VEH-H)	0

AVERAGE ACCIDENT NUMBERS (PIA/DAY)	
MAIN ROUTE WITHOUT WORKS	0.0228
MAIN ROUTE WITH WORKS	0.0152
'DIVERSION'	0.0154

PIA: Personal Injury Accidents

ECONOMIC IMPACT ON ROAD USERS	
ROAD USER COSTS PER DAY	\$117,968
CONGESTED HOURS PER DAY*	9

\*Delays Exceeding User-Specified Maximum

**IH 43: SILVER SPRING DR TO STH 190 (MILWAUKEE COUNTY)**  
**OFF-PEAK DAY 2 LANE CLOSURE**  
**NO DIVERSION ROUTE (MAX QUEUE METHOD)**

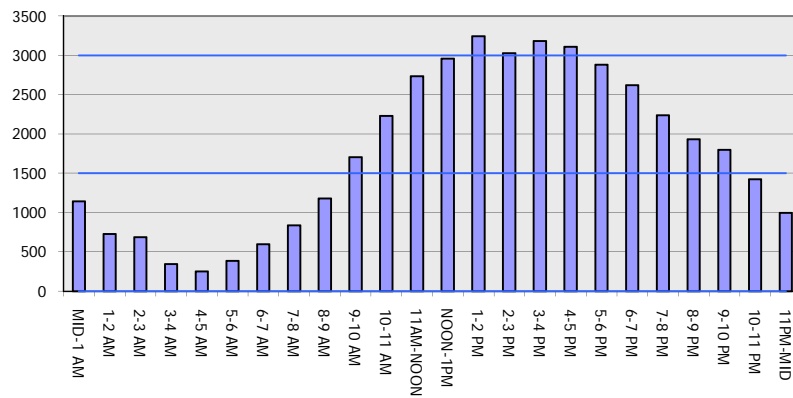
**AUGUST**

Analyzed for 2009  
 Construction Season

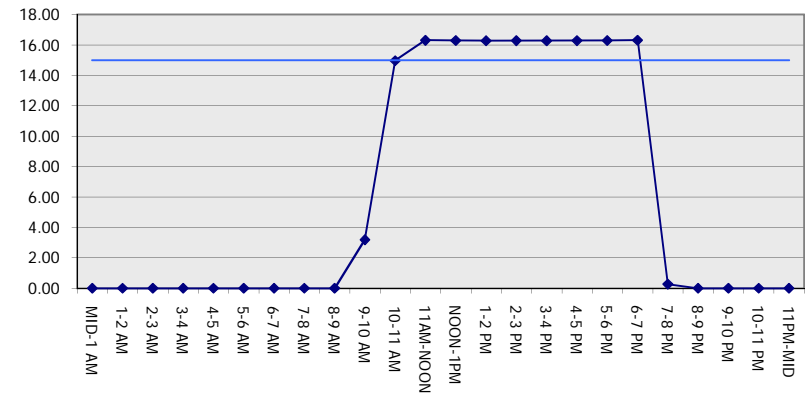
**GRAPHICAL REPRESENTATION OF TRAFFIC MODEL INPUT AND OUTPUT**

**SUNDAY NORTHBOUND DIRECTION**

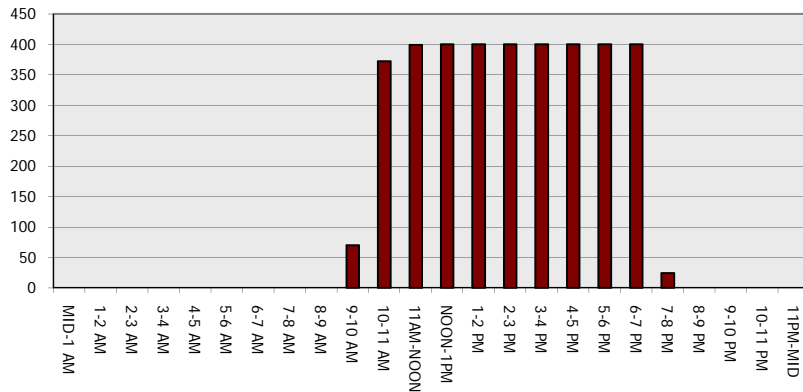
**Main Route - Traffic Demand (Vehicles Per Hour)**



**Main Route Average Delay Per Vehicle (Minutes)**



**Main Route - Average Queue Length (Vehicles)**



**Main Route - Average Speed (MPH)**

