

<b>IH 43: SILVER SPRING DR TO STH 190 (MILWAUKEE COUNTY)</b> <b>OFF-PEAK DAY CLOSURE</b> <b>NO DIVERSION ROUTE (MAX QUEUE METHOD)</b>	<b>AUGUST</b>
	Analyzed for 2009 Construction Season

**SUMMARY OF TRAFFIC MODEL OUTPUT**

SUNDAY SOUTHBOUND DIRECTION

TIME OF DAY	FLOWS AND CAPACITY IN VEH/HR						AVERAGE SPEEDS IN MPH				
	MAIN ROUTE		SITE CAPA CITY	FLOW		AV.DEL PER VEH (MINS)	AVERAGE QUEUE (VEH)	MAIN ROUTE		SITE	
	DEMAND FLOW	PCT HEAVY		MAIN ROUTE	'DIVER TED'			WITHOUT WORK ZONE	WITH WORK ZONE		
MID-1 AM	1046	0.0	OFF	1046	0	0.00	0	69.4	69.4	69.4	
1-2 AM	565	0.0	OFF	565	0	0.00	0	70.0	70.0	70.0	
2-3 AM	269	0.0	OFF	269	0	0.00	0	70.2	70.2	70.2	
3-4 AM	205	0.0	OFF	205	0	0.00	0	70.2	70.2	70.2	
4-5 AM	240	0.0	OFF	240	0	0.00	0	70.2	70.2	70.2	
5-6 AM	397	0.0	OFF	397	0	0.00	0	70.2	70.2	70.2	
6-7 AM	690	0.0	OFF	690	0	0.00	0	69.9	69.9	69.9	
7-8 AM	979	0.0	OFF	979	0	0.00	0	69.5	69.5	69.5	
8-9 AM	1437	0.0	OFF	1437	0	0.00	0	68.9	68.9	68.9	
9-10 AM	2311	0.0	2999	2311	0	0.37	0	67.9	60.4	48.2	
10-11 AM	2987	0.0	2999	2987	0	0.92	14	67.0	51.4	38.4	
11AM-NOON	3359	0.0	3000	3359	0	4.23	214	66.6	27.9	37.3	
NOON-1PM	3768	0.0	3000	3379	389	13.42+	720	65.1	13.3	37.3	
1-2 PM	3663	0.0	3000	3009	653	15.88+	838	65.8	12.2	37.3	
2-3 PM	3832	0.0	3000	3008	825	15.82+	838	64.6	12.2	37.3	
3-4 PM	3721	0.0	3000	3006	716	15.86+	838	65.5	12.2	37.3	
4-5 PM	3743	0.0	3000	3004	738	15.85+	838	65.3	12.2	37.3	
5-6 PM	3302	0.0	3000	3003	299	15.89+	836	66.6	12.2	37.3	
6-7 PM	3201	0.0	3000	3002	199	15.89+	836	66.8	12.2	37.3	
7-8 PM	2487	0.0	OFF	2487	0	1.02	97	67.6	50.5	50.5	
8-9 PM	2115	0.0	OFF	2115	0	0.00	0	68.1	68.1	68.1	
9-10 PM	1626	0.0	OFF	1626	0	0.00	0	68.7	68.7	68.7	
10-11 PM	1080	0.0	OFF	1080	0	0.00	0	69.4	69.4	69.4	
11PM-MID	671	0.0	OFF	671	0	0.00	0	69.9	69.9	69.9	

"OFF" INDICATES NO ROAD WORK (ALL LANES OPEN TO TRAFFIC)

+ INDICATES QUEUEING EXCEEDS USER-SPECIFIED MAXIMUM LIMIT

*----- SITE BREAKDOWN DELAYS -----*	
BREAKDOWN DURATION (MINS)	0
RANGE OF QUEUE DELAY - MIN (VEH-H) MAX	0.0
AV BREAKDOWNS PER DAY	0.00
AV QUEUE DELAY/DAY (VEH-H)	0.0
AV TOTAL DELAY/DAY (VEH-H)	0.0

*----- SITE ACCIDENT DELAYS -----*	
BREAKDOWN DURATION (MINS)	0
RANGE OF QUEUE DELAY - MIN (VEH-H) MAX	0
AV BREAKDOWNS PER DAY	0
AV QUEUE DELAY/DAY (VEH-H)	0
AV TOTAL DELAY/DAY (VEH-H)	0

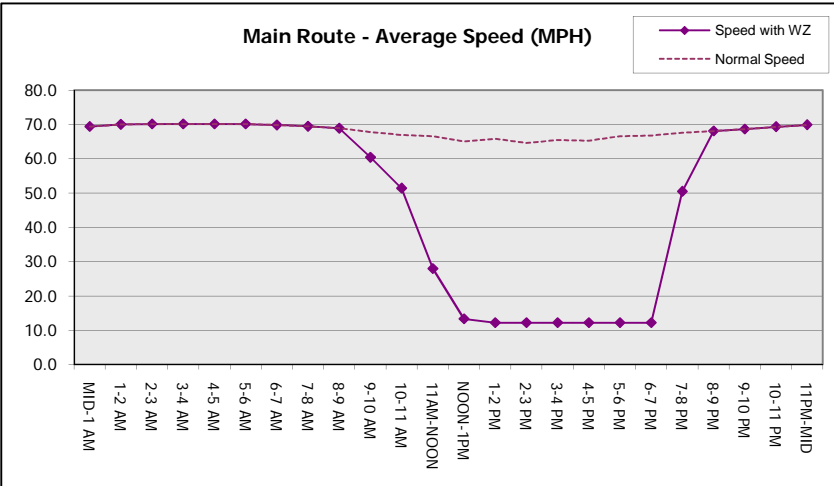
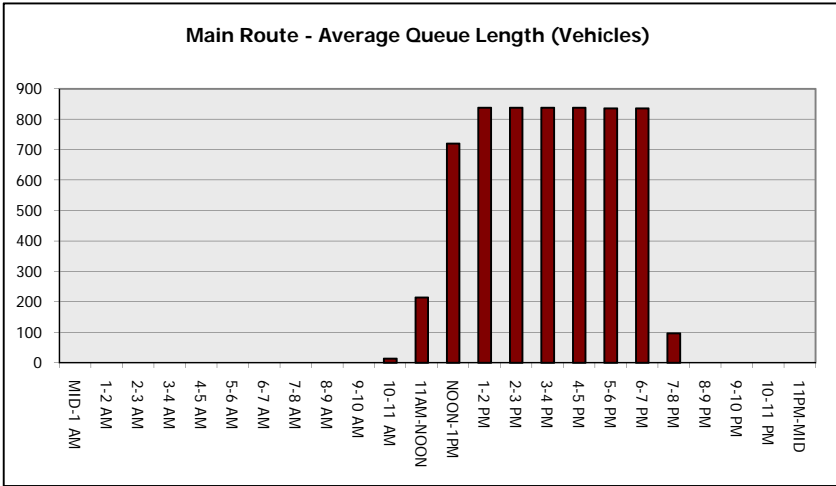
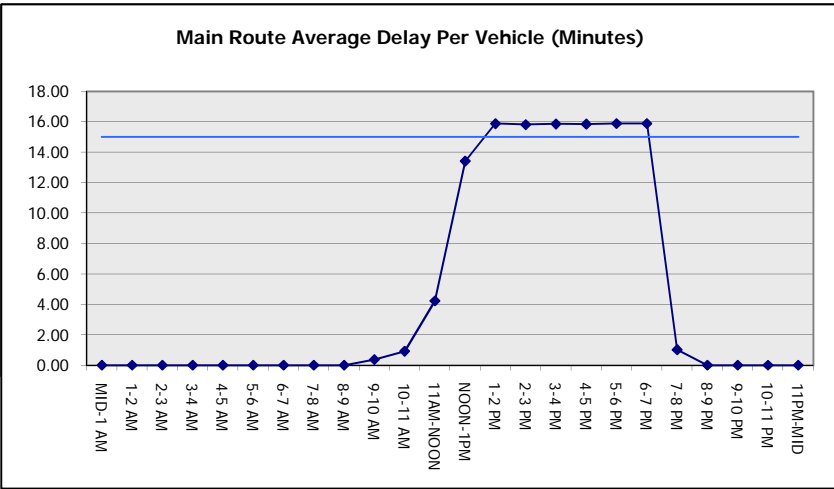
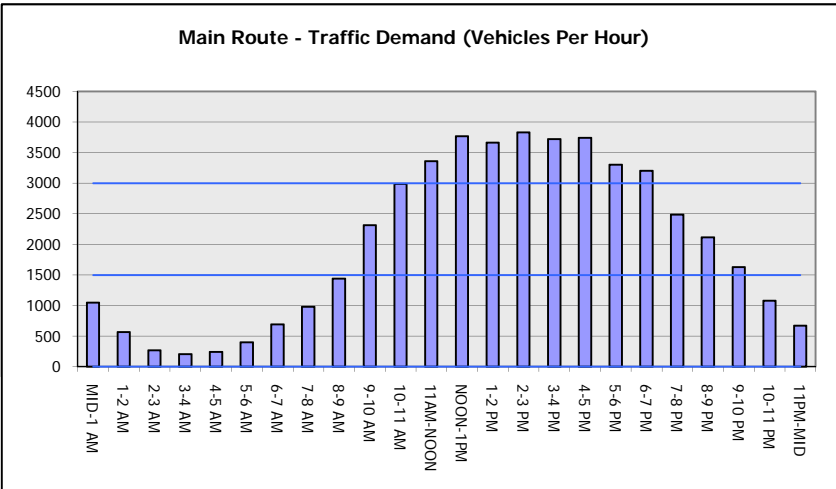
AVERAGE ACCIDENT NUMBERS (PIA/DAY)	
MAIN ROUTE WITHOUT WORKS	0.0258
MAIN ROUTE WITH WORKS	0.0217
'DIVERSION'	0.0048
PIA: Personal Injury Accidents	
IMPACTS ON ROAD USERS	
ROAD USER COSTS PER DAY	\$112,976
CONGESTED HOURS PER DAY*	7

\*Delays Exceeding User-Specified Maximum

**IH 43: SILVER SPRING DR TO STH 190 (MILWAUKEE COUNTY)**  
**OFF-PEAK DAY CLOSURE**  
**NO DIVERSION ROUTE (MAX QUEUE METHOD)**

**AUGUST**  
 Analyzed for 2009  
 Construction Season

**GRAPHICAL REPRESENTATION OF TRAFFIC MODEL INPUT AND OUTPUT**  
**SUNDAY SOUTHBOUND DIRECTION**



<b>IH 43: SILVER SPRING DR TO STH 190 (MILWAUKEE COUNTY)</b> <b>OFF-PEAK DAY CLOSURE</b> <b>NO DIVERSION ROUTE (MAX QUEUE METHOD)</b>	<b>AUGUST</b>
	Analyzed for 2009 Construction Season

**SUMMARY OF TRAFFIC MODEL OUTPUT**

SUNDAY NORTHBOUND DIRECTION

TIME OF DAY	FLOWS AND CAPACITY IN VEH/HR						AVERAGE SPEEDS IN MPH			
	MAIN ROUTE		SITE CAPA CITY	FLOW		AV.DEL PER VEH (MINS)	AVERAGE QUEUE (VEH)	MAIN ROUTE		SITE
	DEMAND FLOW	PCT HEAVY		MAIN ROUTE	'DIVER TED'			WITHOUT WORK ZONE	WITH WORK ZONE	
MID-1 AM	1142	0.0	OFF	1142	0	0.00	0	69.3	69.3	69.3
1-2 AM	728	0.0	OFF	728	0	0.00	0	69.8	69.8	69.8
2-3 AM	686	0.0	OFF	686	0	0.00	0	69.9	69.9	69.9
3-4 AM	346	0.0	OFF	346	0	0.00	0	70.2	70.2	70.2
4-5 AM	254	0.0	OFF	254	0	0.00	0	70.2	70.2	70.2
5-6 AM	386	0.0	OFF	386	0	0.00	0	70.2	70.2	70.2
6-7 AM	598	0.0	OFF	598	0	0.00	0	70.0	70.0	70.0
7-8 AM	838	0.0	OFF	838	0	0.00	0	69.7	69.7	69.7
8-9 AM	1181	0.0	OFF	1181	0	0.00	0	69.2	69.2	69.2
9-10 AM	1707	0.0	3000	1707	0	0.34	0	68.6	61.6	49.7
10-11 AM	2229	0.0	3000	2229	0	0.33	0	67.9	61.2	49.7
11AM-NOON	2735	0.0	2999	2735	0	0.55	0	67.3	56.9	41.9
NOON-1PM	2957	0.0	2999	2957	0	0.74	2	67.1	54.0	38.1
1-2 PM	3243	0.0	3000	3243	0	2.86	129	66.7	34.5	37.3
2-3 PM	3029	0.0	2999	3029	0	5.62	269	66.9	23.5	37.3
3-4 PM	3181	0.0	3000	3181	0	7.37	370	66.8	19.6	37.3
4-5 PM	3108	0.0	2999	3108	0	10.25	526	66.9	15.3	37.3
5-6 PM	2881	0.0	2999	2881	0	10.27	526	67.1	15.3	37.3
6-7 PM	2621	0.0	2999	2621	0	5.37	282	67.5	24.3	38.9
7-8 PM	2239	0.0	OFF	2239	0	0.01	0	67.9	67.7	67.7
8-9 PM	1935	0.0	OFF	1935	0	0.00	0	68.3	68.3	68.3
9-10 PM	1797	0.0	OFF	1797	0	0.00	0	68.5	68.5	68.5
10-11 PM	1426	0.0	OFF	1426	0	0.00	0	68.9	68.9	68.9
11PM-MID	996	0.0	OFF	996	0	0.00	0	69.5	69.5	69.5

"OFF" INDICATES NO ROAD WORK (ALL LANES OPEN TO TRAFFIC)

*----- SITE BREAKDOWN DELAYS -----*	
BREAKDOWN DURATION (MINS)	0
RANGE OF QUEUE DELAY - MIN (VEH-H) MAX	0.0
AV BREAKDOWNS PER DAY	0.00
AV QUEUE DELAY/DAY (VEH-H)	0.0
AV TOTAL DELAY/DAY (VEH-H)	0.0

*----- SITE ACCIDENT DELAYS -----*	
BREAKDOWN DURATION (MINS)	0
RANGE OF QUEUE DELAY - MIN (VEH-H) MAX	0
AV BREAKDOWNS PER DAY	0
AV QUEUE DELAY/DAY (VEH-H)	0
AV TOTAL DELAY/DAY (VEH-H)	0

AVERAGE ACCIDENT NUMBERS (PIA/DAY)	
MAIN ROUTE WITHOUT WORKS	0.0228
MAIN ROUTE WITH WORKS	0.0210
'DIVERSION'	0.0000

PIA: Personal Injury Accidents

ECONOMIC IMPACT ON ROAD USERS	
ROAD USER COSTS PER DAY	\$35,782
CONGESTED HOURS PER DAY*	0

\*Delays Exceeding User-Specified Maximum

**IH 43: SILVER SPRING DR TO STH 190 (MILWAUKEE COUNTY)**  
**OFF-PEAK DAY CLOSURE**  
**NO DIVERSION ROUTE (MAX QUEUE METHOD)**

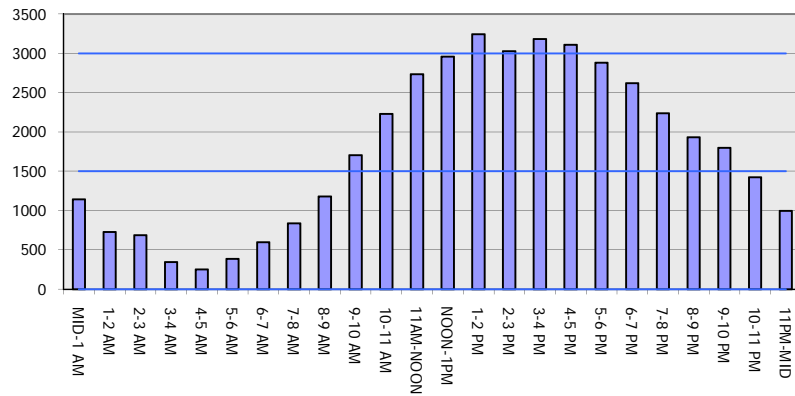
**AUGUST**

Analyzed for 2009  
 Construction Season

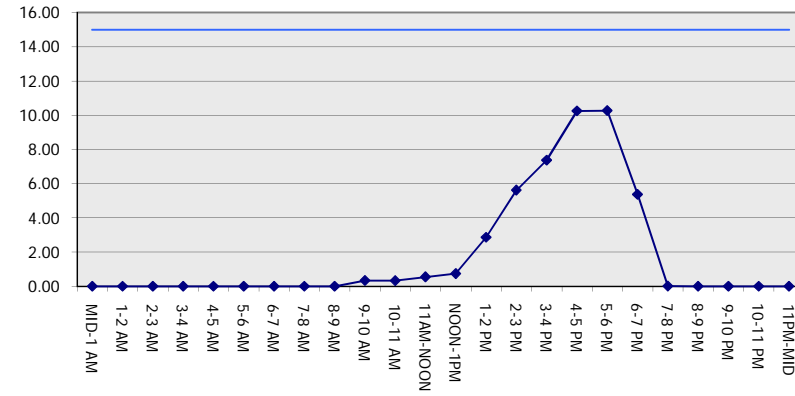
**GRAPHICAL REPRESENTATION OF TRAFFIC MODEL INPUT AND OUTPUT**

**SUNDAY NORTHBOUND DIRECTION**

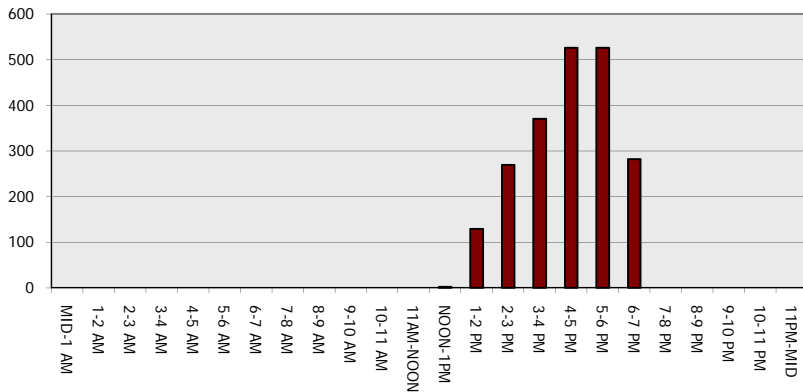
**Main Route - Traffic Demand (Vehicles Per Hour)**



**Main Route Average Delay Per Vehicle (Minutes)**



**Main Route - Average Queue Length (Vehicles)**



**Main Route - Average Speed (MPH)**

