

IH 43: SILVER SPRING DR TO STH 190 (MILWAUKEE COUNTY) OFF-PEAK DAY 2 LANE CLOSURE NO DIVERSION ROUTE (MAX QUEUE METHOD)	AUGUST
	Analyzed for 2009 Construction Season

SUMMARY OF TRAFFIC MODEL OUTPUT

SATURDAY SOUTHBOUND DIRECTION

TIME OF DAY	FLOWS AND CAPACITY IN VEH/HR						AVERAGE SPEEDS IN MPH				
	MAIN ROUTE		SITE CAPA CITY	FLOW		AV.DEL PER VEH (MINS)	AVERAGE QUEUE (VEH)	MAIN ROUTE		SITE	
	DEMAND FLOW	PCT HEAVY		MAIN ROUTE	'DIVER TED'			WITHOUT WORK ZONE	WITH WORK ZONE		
MID-1 AM	653	0.0	OFF	653	0	0.00	0	69.9	69.9	69.9	
1-2 AM	324	0.0	OFF	324	0	0.00	0	70.2	70.2	70.2	
2-3 AM	283	0.0	OFF	283	0	0.00	0	70.2	70.2	70.2	
3-4 AM	240	0.0	OFF	240	0	0.00	0	70.2	70.2	70.2	
4-5 AM	349	0.0	OFF	349	0	0.00	0	70.2	70.2	70.2	
5-6 AM	640	0.0	OFF	640	0	0.00	0	69.9	69.9	69.9	
6-7 AM	1038	0.0	OFF	1038	0	0.00	0	69.4	69.4	69.4	
7-8 AM	1491	0.0	OFF	1491	0	0.00	0	68.9	68.9	68.9	
8-9 AM	2261	0.0	1499	1813	447	10.00+	274	67.9	15.7	31.4	
9-10 AM	2746	0.0	1499	1500	1246	16.22+	399	67.3	10.6	32.2	
10-11 AM	3140	0.0	1500	1500	1640	16.20+	400	66.8	10.6	32.2	
11AM-NOON	3422	0.0	1500	1500	1922	16.19+	400	66.5	10.6	32.2	
NOON-1PM	3498	0.0	1500	1500	1998	16.18+	400	66.4	10.6	32.2	
1-2 PM	3451	0.0	1500	1500	1951	16.18+	400	66.4	10.6	32.2	
2-3 PM	3505	0.0	1500	1500	2005	16.18+	400	66.4	10.6	32.2	
3-4 PM	3556	0.0	1500	1500	2056	16.18+	400	66.3	10.6	32.2	
4-5 PM	3312	0.0	1500	1500	1812	16.19+	400	66.6	10.6	32.2	
5-6 PM	3093	0.0	1500	1500	1593	16.20+	400	66.9	10.6	32.2	
6-7 PM	2912	0.0	OFF	2912	0	0.18	15	67.1	63.4	63.4	
7-8 PM	2420	0.0	OFF	2420	0	0.00	0	67.8	67.8	67.8	
8-9 PM	1968	0.0	OFF	1968	0	0.00	0	68.3	68.3	68.3	
9-10 PM	1933	0.0	OFF	1933	0	0.00	0	68.3	68.3	68.3	
10-11 PM	1658	0.0	OFF	1658	0	0.00	0	68.7	68.7	68.7	
11PM-MID	1223	0.0	OFF	1223	0	0.00	0	69.2	69.2	69.2	

"OFF" INDICATES NO ROAD WORK (ALL LANES OPEN TO TRAFFIC)

+ INDICATES QUEUEING EXCEEDS USER-SPECIFIED MAXIMUM LIMIT

----- SITE BREAKDOWN DELAYS -----	
BREAKDOWN DURATION (MINS)	0
RANGE OF QUEUE DELAY - MIN (VEH-H) MAX	0.0
AV BREAKDOWNS PER DAY	0.00
AV QUEUE DELAY/DAY (VEH-H)	0.0
AV TOTAL DELAY/DAY (VEH-H)	0.0

----- SITE ACCIDENT DELAYS -----	
BREAKDOWN DURATION (MINS)	0
RANGE OF QUEUE DELAY - MIN (VEH-H) MAX	0
AV BREAKDOWNS PER DAY	0
AV QUEUE DELAY/DAY (VEH-H)	0
AV TOTAL DELAY/DAY (VEH-H)	0

AVERAGE ACCIDENT NUMBERS (PIA/DAY)	
MAIN ROUTE WITHOUT WORKS	0.0266
MAIN ROUTE WITH WORKS	0.0165
'DIVERSION'	0.0209
PIA: Personal Injury Accidents	
IMPACTS ON ROAD USERS	
ROAD USER COSTS PER DAY	\$138,907
CONGESTED HOURS PER DAY*	10

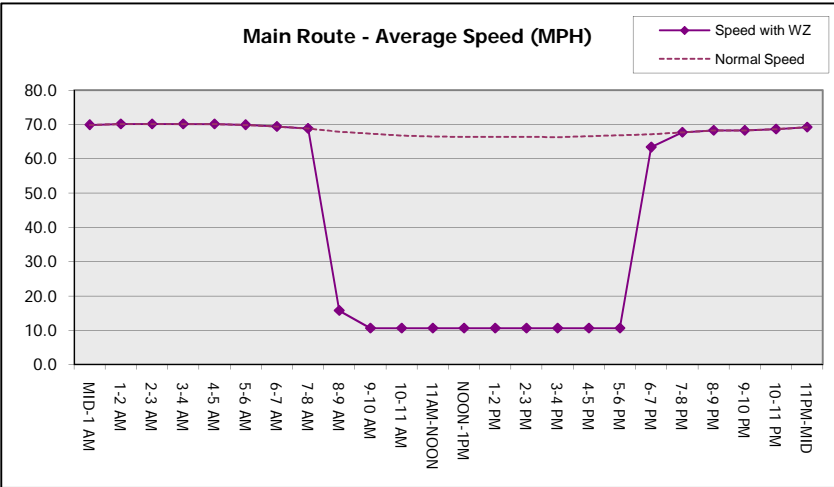
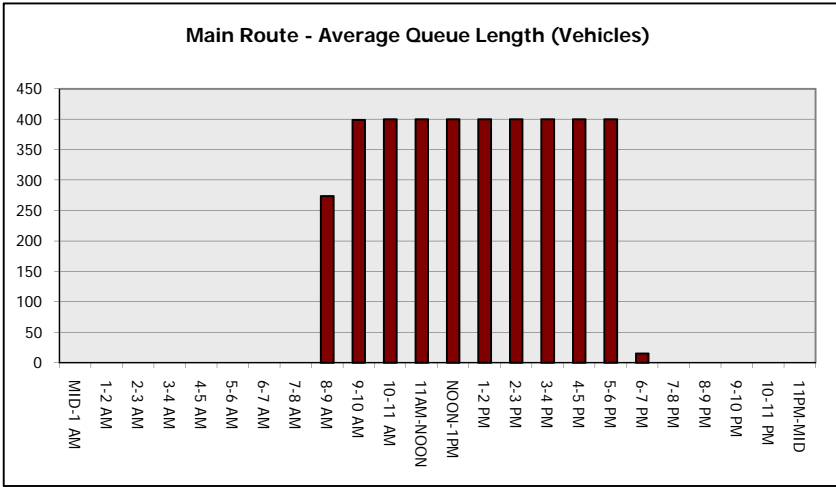
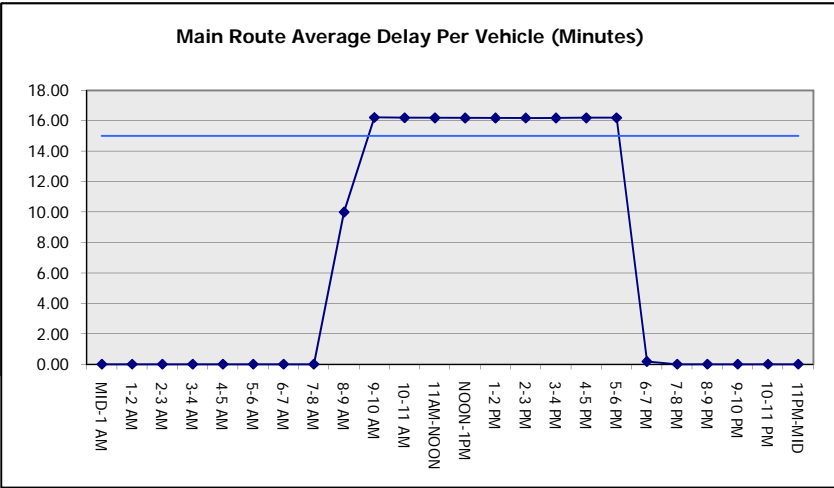
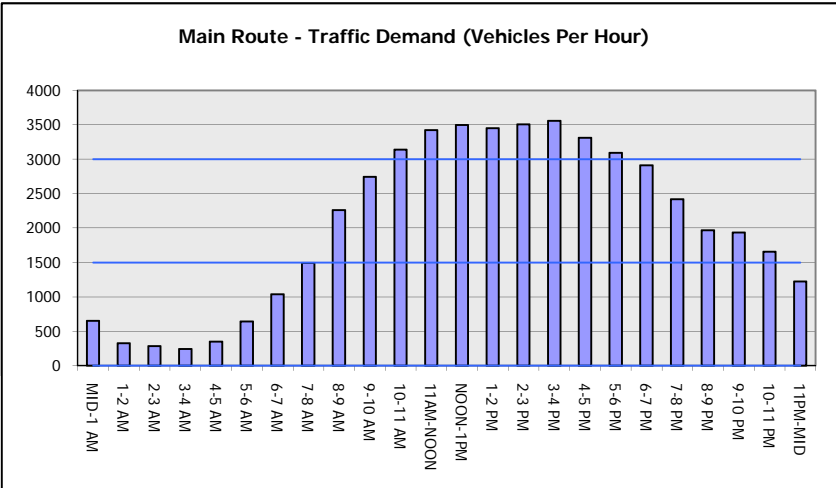
*Delays Exceeding User-Specified Maximum

IH 43: SILVER SPRING DR TO STH 190 (MILWAUKEE COUNTY)
OFF-PEAK DAY 2 LANE CLOSURE
NO DIVERSION ROUTE (MAX QUEUE METHOD)

AUGUST
 Analyzed for 2009
 Construction Season

GRAPHICAL REPRESENTATION OF TRAFFIC MODEL INPUT AND OUTPUT

SATURDAY SOUTHBOUND DIRECTION



IH 43: SILVER SPRING DR TO STH 190 (MILWAUKEE COUNTY) OFF-PEAK DAY 2 LANE CLOSURE NO DIVERSION ROUTE (MAX QUEUE METHOD)	AUGUST
	Analyzed for 2009 Construction Season

SUMMARY OF TRAFFIC MODEL OUTPUT

SATURDAY NORTHBOUND DIRECTION

TIME OF DAY	FLOWS AND CAPACITY IN VEH/HR						AVERAGE SPEEDS IN MPH			
	MAIN ROUTE		SITE CAPA CITY	FLOW		AV.DEL PER VEH (MINS)	AVERAGE QUEUE (VEH)	MAIN ROUTE		SITE
	DEMAND FLOW	PCT HEAVY		MAIN ROUTE	'DIVER TED'			WITHOUT WORK ZONE	WITH WORK ZONE	
MID-1 AM	1111	0.0	OFF	1111	0	0.00	0	69.4	69.4	69.4
1-2 AM	727	0.0	OFF	727	0	0.00	0	69.8	69.8	69.8
2-3 AM	704	0.0	OFF	704	0	0.00	0	69.9	69.9	69.9
3-4 AM	460	0.0	OFF	460	0	0.00	0	70.2	70.2	70.2
4-5 AM	389	0.0	OFF	389	0	0.00	0	70.2	70.2	70.2
5-6 AM	719	0.0	OFF	719	0	0.00	0	69.9	69.9	69.9
6-7 AM	1141	0.0	OFF	1141	0	0.00	0	69.3	69.3	69.3
7-8 AM	1627	0.0	OFF	1627	0	0.00	0	68.7	68.7	68.7
8-9 AM	2229	0.0	1499	1827	401	9.97+	272	67.9	15.7	30.9
9-10 AM	2644	0.0	1499	1500	1144	16.28+	399	67.4	10.6	31.3
10-11 AM	3060	0.0	1500	1500	1560	16.26+	400	66.9	10.6	31.3
11AM-NOON	3186	0.0	1500	1500	1686	16.25+	400	66.8	10.6	31.3
NOON-1PM	3472	0.0	1500	1500	1972	16.24+	400	66.4	10.6	31.3
1-2 PM	3302	0.0	1500	1500	1802	16.25+	400	66.6	10.6	31.3
2-3 PM	3289	0.0	1500	1500	1789	16.25+	400	66.6	10.6	31.3
3-4 PM	3498	0.0	1499	1500	1998	16.23+	400	66.4	10.6	31.3
4-5 PM	3140	0.0	1500	1500	1640	16.25+	400	66.8	10.6	31.3
5-6 PM	2989	0.0	1500	1500	1489	16.26+	399	67.0	10.6	31.3
6-7 PM	2471	0.0	OFF	2471	0	0.17	15	67.7	64.0	64.0
7-8 PM	2099	0.0	OFF	2099	0	0.00	0	68.1	68.1	68.1
8-9 PM	2108	0.0	OFF	2108	0	0.00	0	68.1	68.1	68.1
9-10 PM	2146	0.0	OFF	2146	0	0.00	0	68.1	68.1	68.1
10-11 PM	1815	0.0	OFF	1815	0	0.00	0	68.5	68.5	68.5
11PM-MID	1446	0.0	OFF	1446	0	0.00	0	68.9	68.9	68.9

"OFF" INDICATES NO ROAD WORK (ALL LANES OPEN TO TRAFFIC)

+ INDICATES QUEUEING EXCEEDS USER-SPECIFIED MAXIMUM LIMIT

----- SITE BREAKDOWN DELAYS -----	
BREAKDOWN DURATION (MINS)	0
RANGE OF QUEUE DELAY - MIN (VEH-H) MAX	0.0
AV BREAKDOWNS PER DAY	0.00
AV QUEUE DELAY/DAY (VEH-H)	0.0
AV TOTAL DELAY/DAY (VEH-H)	0.0

----- SITE ACCIDENT DELAYS -----	
BREAKDOWN DURATION (MINS)	0
RANGE OF QUEUE DELAY - MIN (VEH-H) MAX	0
AV BREAKDOWNS PER DAY	0
AV QUEUE DELAY/DAY (VEH-H)	0
AV TOTAL DELAY/DAY (VEH-H)	0

AVERAGE ACCIDENT NUMBERS (PIA/DAY)	
MAIN ROUTE WITHOUT WORKS	0.0269
MAIN ROUTE WITH WORKS	0.0175
'DIVERSION'	0.0194

PIA: Personal Injury Accidents

ECONOMIC IMPACT ON ROAD USERS	
ROAD USER COSTS PER DAY	\$134,156
CONGESTED HOURS PER DAY*	10

*Delays Exceeding User-Specified Maximum

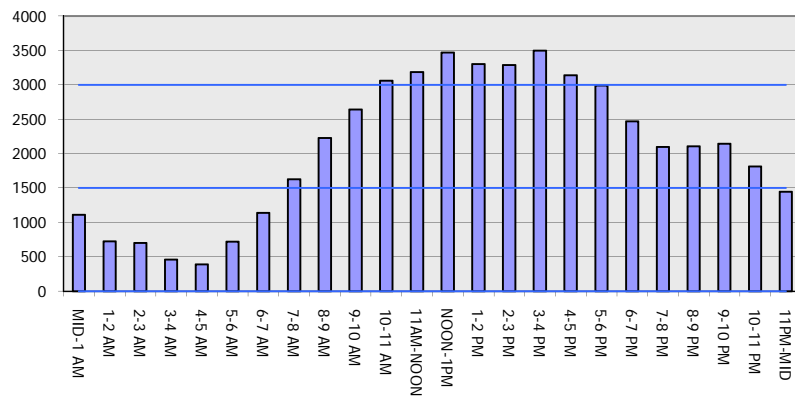
IH 43: SILVER SPRING DR TO STH 190 (MILWAUKEE COUNTY)
OFF-PEAK DAY 2 LANE CLOSURE
NO DIVERSION ROUTE (MAX QUEUE METHOD)

AUGUST

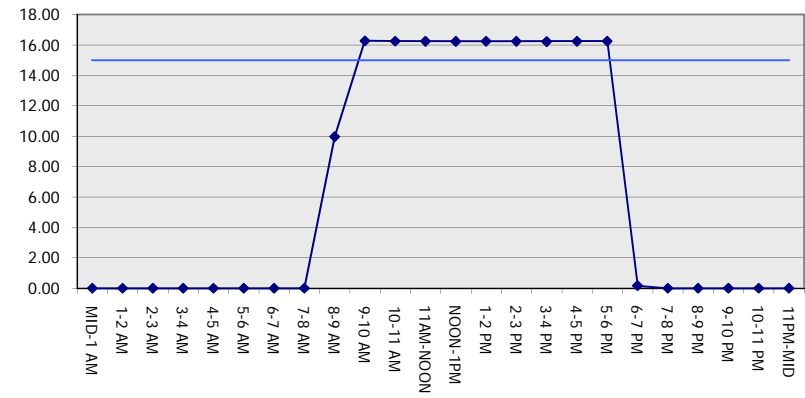
Analyzed for 2009
 Construction Season

GRAPHICAL REPRESENTATION OF TRAFFIC MODEL INPUT AND OUTPUT
SATURDAY NORTHBOUND DIRECTION

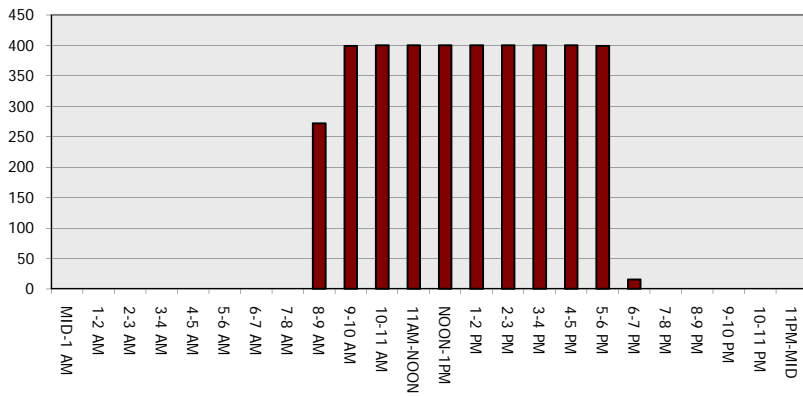
Main Route - Traffic Demand (Vehicles Per Hour)



Main Route Average Delay Per Vehicle (Minutes)



Main Route - Average Queue Length (Vehicles)



Main Route - Average Speed (MPH)

