

IH 43: SILVER SPRING DR TO STH 190 (MILWAUKEE COUNTY) OFF-PEAK DAY 2 LANE CLOSURE NO DIVERSION ROUTE (MAX QUEUE METHOD)	AUGUST Analyzed for 2009 Construction Season
--	---

SUMMARY OF TRAFFIC MODEL OUTPUT

FRIDAY SOUTHBOUND DIRECTION

TIME OF DAY	FLOWS AND CAPACITY IN VEH/HR						AVERAGE SPEEDS IN MPH				
	MAIN ROUTE		SITE CAPA CITY	FLOW		AV.DEL PER VEH (MINS)	AVERAGE QUEUE (VEH)	MAIN ROUTE		SITE	
	DEMAND FLOW	PCT HEAVY		MAIN ROUTE	'DIVER TED'			WITHOUT WORK ZONE	WITH WORK ZONE		
MID-1 AM	502	0.0	OFF	502	0	0.00	0	70.1	70.1	70.1	
1-2 AM	296	0.0	OFF	296	0	0.00	0	70.2	70.2	70.2	
2-3 AM	256	0.0	OFF	256	0	0.00	0	70.2	70.2	70.2	
3-4 AM	261	0.0	OFF	261	0	0.00	0	70.2	70.2	70.2	
4-5 AM	591	0.0	OFF	591	0	0.00	0	70.0	70.0	70.0	
5-6 AM	1442	0.0	OFF	1442	0	0.00	0	68.9	68.9	68.9	
6-7 AM	3346	0.0	OFF	3346	0	0.00	0	66.6	66.6	66.6	
7-8 AM	4525	0.0	OFF	4525	0	0.00	0	59.9	59.9	59.9	
8-9 AM	4493	0.0	OFF	4493	0	0.00	0	60.2	60.2	60.2	
9-10 AM	3614	0.0	OFF	3614	0	0.00	0	66.1	66.1	66.1	
10-11 AM	3405	0.0	1499	1550	1855	16.47+	412	66.5	10.4	36.6	
11AM-NOON	3630	0.0	1499	1670	1960	14.40+	378	66.1	11.7	35.8	
NOON-1PM	3792	0.0	1499	1529	2264	15.81+	397	65.0	10.7	36.7	
1-2 PM	3920	0.0	1500	1500	2420	15.84+	399	64.1	10.7	37.1	
2-3 PM	4219	0.0	1500	1500	2719	15.73+	400	62.0	10.7	37.1	
3-4 PM	4031	0.0	OFF	4031	0	0.25	15	63.3	58.8	58.8	
4-5 PM	4673	0.0	OFF	4673	0	0.00	0	58.9	58.9	58.9	
5-6 PM	4597	0.0	OFF	4597	0	0.00	0	59.4	59.4	59.4	
6-7 PM	3762	0.0	OFF	3762	0	0.00	0	65.1	65.1	65.1	
7-8 PM	2704	0.0	OFF	2704	0	0.00	0	67.4	67.4	67.4	
8-9 PM	2113	0.0	OFF	2113	0	0.00	0	68.1	68.1	68.1	
9-10 PM	1938	0.0	OFF	1938	0	0.00	0	68.3	68.3	68.3	
10-11 PM	1732	0.0	OFF	1732	0	0.00	0	68.6	68.6	68.6	
11PM-MID	1263	0.0	OFF	1263	0	0.00	0	69.2	69.2	69.2	

"OFF" INDICATES NO ROAD WORK (ALL LANES OPEN TO TRAFFIC)

+ INDICATES QUEUEING EXCEEDS USER-SPECIFIED MAXIMUM LIMIT

----- SITE BREAKDOWN DELAYS -----	
BREAKDOWN DURATION (MINS)	0
RANGE OF QUEUE DELAY - MIN (VEH-H) MAX	0.0
AV BREAKDOWNS PER DAY	0.00
AV QUEUE DELAY/DAY (VEH-H)	0.0
AV TOTAL DELAY/DAY (VEH-H)	0.0

----- SITE ACCIDENT DELAYS -----	
BREAKDOWN DURATION (MINS)	0
RANGE OF QUEUE DELAY - MIN (VEH-H) MAX	0
AV BREAKDOWNS PER DAY	0
AV QUEUE DELAY/DAY (VEH-H)	0
AV TOTAL DELAY/DAY (VEH-H)	0

AVERAGE ACCIDENT NUMBERS (PIA/DAY)	
MAIN ROUTE WITHOUT WORKS	0.0352
MAIN ROUTE WITH WORKS	0.0286
'DIVERSION'	0.0141
<small>PIA: Personal Injury Accidents</small>	
IMPACTS ON ROAD USERS	
ROAD USER COSTS PER DAY	\$65,866
CONGESTED HOURS PER DAY*	5

*Delays Exceeding User-Specified Maximum

IH 43: SILVER SPRING DR TO STH 190 (MILWAUKEE COUNTY)
OFF-PEAK DAY 2 LANE CLOSURE
NO DIVERSION ROUTE (MAX QUEUE METHOD)

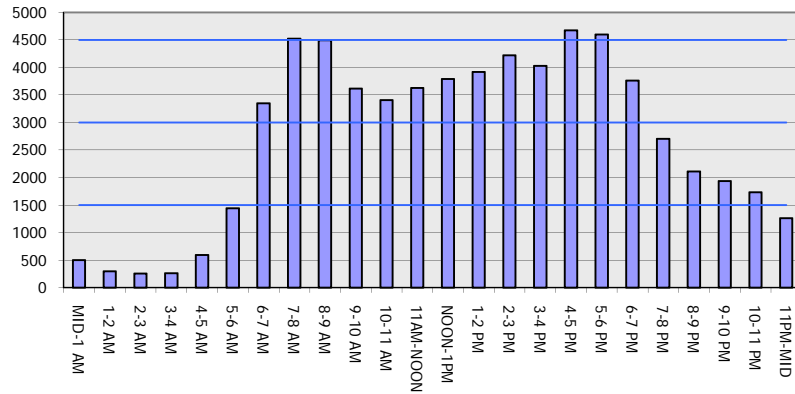
AUGUST

Analyzed for 2009
 Construction Season

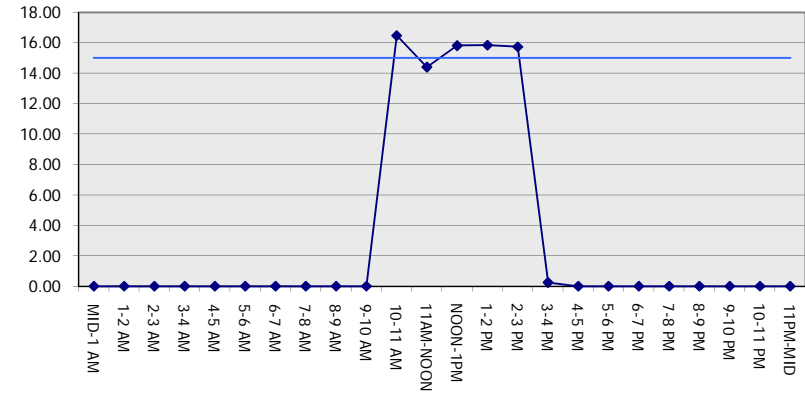
GRAPHICAL REPRESENTATION OF TRAFFIC MODEL INPUT AND OUTPUT

FRIDAY SOUTHBOUND DIRECTION

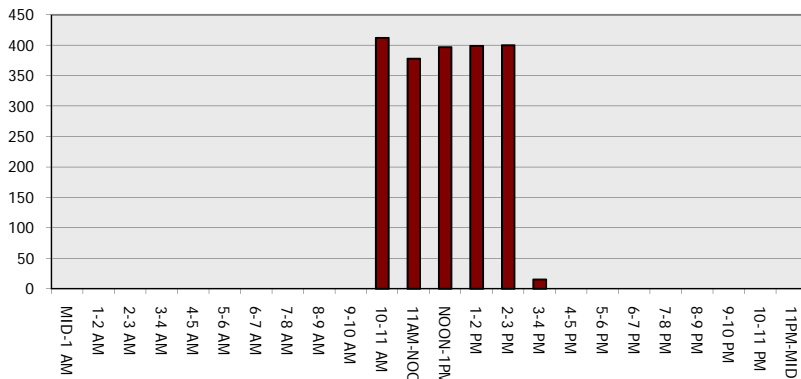
Main Route - Traffic Demand (Vehicles Per Hour)



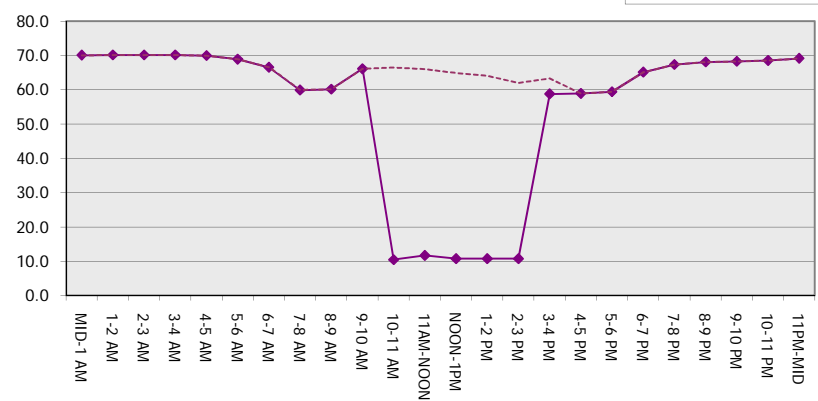
Main Route Average Delay Per Vehicle (Minutes)



Main Route - Average Queue Length (Vehicles)



Main Route - Average Speed (MPH)



IH 43: SILVER SPRING DR TO STH 190 (MILWAUKEE COUNTY) OFF-PEAK DAY 2 LANE CLOSURE NO DIVERSION ROUTE (MAX QUEUE METHOD)	AUGUST Analyzed for 2009 Construction Season
--	---

SUMMARY OF TRAFFIC MODEL OUTPUT

FRIDAY NORTHBOUND DIRECTION

TIME OF DAY	FLOWS AND CAPACITY IN VEH/HR						AVERAGE SPEEDS IN MPH			
	MAIN ROUTE		SITE CAPA CITY	FLOW		AV.DEL PER VEH (MINS)	AVERAGE QUEUE (VEH)	MAIN ROUTE		SITE
	DEMAND FLOW	PCT HEAVY		MAIN ROUTE	'DIVER TED'			WITHOUT WORK ZONE	WITH WORK ZONE	
MID-1 AM	870	0.0	OFF	870	0	0.00	0	69.7	69.7	69.7
1-2 AM	554	0.0	OFF	554	0	0.00	0	70.0	70.0	70.0
2-3 AM	426	0.0	OFF	426	0	0.00	0	70.2	70.2	70.2
3-4 AM	397	0.0	OFF	397	0	0.00	0	70.2	70.2	70.2
4-5 AM	571	0.0	OFF	571	0	0.00	0	70.0	70.0	70.0
5-6 AM	1577	0.0	OFF	1577	0	0.00	0	68.7	68.7	68.7
6-7 AM	3356	0.0	OFF	3356	0	0.00	0	66.6	66.6	66.6
7-8 AM	4055	0.0	OFF	4055	0	0.00	0	63.2	63.2	63.2
8-9 AM	4047	0.0	OFF	4047	0	0.00	0	63.2	63.2	63.2
9-10 AM	3341	0.0	OFF	3341	0	0.00	0	66.6	66.6	66.6
10-11 AM	3371	0.0	1499	1550	1821	16.47+	412	66.6	10.4	36.6
11AM-NOON	3849	0.0	1499	1698	2151	14.39+	378	64.6	11.6	35.8
NOON-1PM	4092	0.0	1499	1500	2592	15.77+	399	62.9	10.7	37.2
1-2 PM	4290	0.0	1500	1500	2790	15.70+	400	61.5	10.7	37.2
2-3 PM	4534	0.0	1500	1500	3034	15.61+	400	59.9	10.7	37.2
3-4 PM	5133	0.0	OFF	5133	0	0.47	35	55.8	49.4	49.4
4-5 PM	5470	0.0	OFF	5470	0	0.00	0	53.5	53.5	53.5
5-6 PM	5135	0.0	OFF	5135	0	0.00	0	55.8	55.8	55.8
6-7 PM	3704	0.0	OFF	3704	0	0.00	0	65.6	65.6	65.6
7-8 PM	2945	0.0	OFF	2945	0	0.00	0	67.1	67.1	67.1
8-9 PM	2488	0.0	OFF	2488	0	0.00	0	67.6	67.6	67.6
9-10 PM	2565	0.0	OFF	2565	0	0.00	0	67.6	67.6	67.6
10-11 PM	2739	0.0	OFF	2739	0	0.00	0	67.3	67.3	67.3
11PM-MID	1806	0.0	OFF	1806	0	0.00	0	68.5	68.5	68.5

"OFF" INDICATES NO ROAD WORK (ALL LANES OPEN TO TRAFFIC)

+ INDICATES QUEUEING EXCEEDS USER-SPECIFIED MAXIMUM LIMIT

----- SITE BREAKDOWN DELAYS -----	
BREAKDOWN DURATION (MINS)	0
RANGE OF QUEUE DELAY - MIN (VEH-H) MAX	0.0
AV BREAKDOWNS PER DAY	0.00
AV QUEUE DELAY/DAY (VEH-H)	0.0
AV TOTAL DELAY/DAY (VEH-H)	0.0

----- SITE ACCIDENT DELAYS -----	
BREAKDOWN DURATION (MINS)	0
RANGE OF QUEUE DELAY - MIN (VEH-H) MAX	0
AV BREAKDOWNS PER DAY	0
AV QUEUE DELAY/DAY (VEH-H)	0
AV TOTAL DELAY/DAY (VEH-H)	0

AVERAGE ACCIDENT NUMBERS (PIA/DAY)	
MAIN ROUTE WITHOUT WORKS	0.0386
MAIN ROUTE WITH WORKS	0.0314
'DIVERSION'	0.0155

PIA: Personal Injury Accidents

ECONOMIC IMPACT ON ROAD USERS	
ROAD USER COSTS PER DAY	\$69,894
CONGESTED HOURS PER DAY*	5

*Delays Exceeding User-Specified Maximum

IH 43: SILVER SPRING DR TO STH 190 (MILWAUKEE COUNTY)
OFF-PEAK DAY 2 LANE CLOSURE
NO DIVERSION ROUTE (MAX QUEUE METHOD)

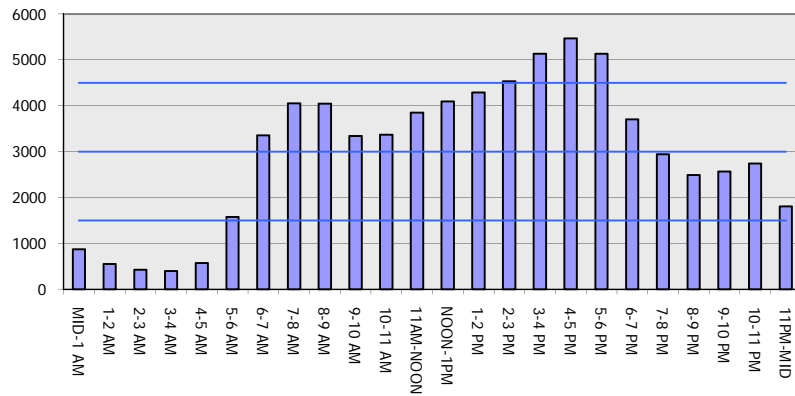
AUGUST

Analyzed for 2009
 Construction Season

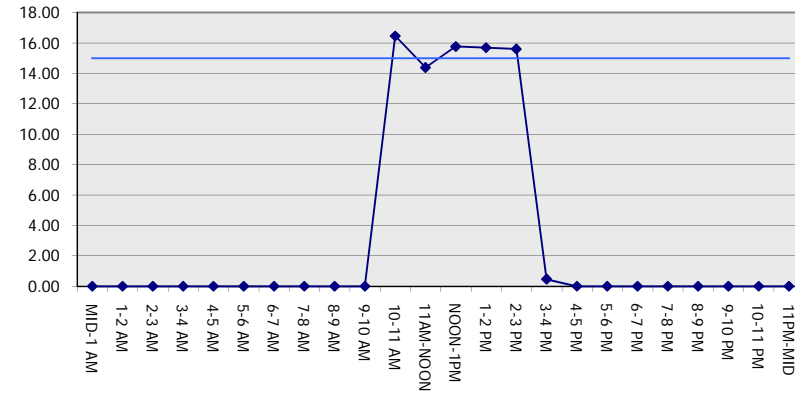
GRAPHICAL REPRESENTATION OF TRAFFIC MODEL INPUT AND OUTPUT

FRIDAY NORTHBOUND DIRECTION

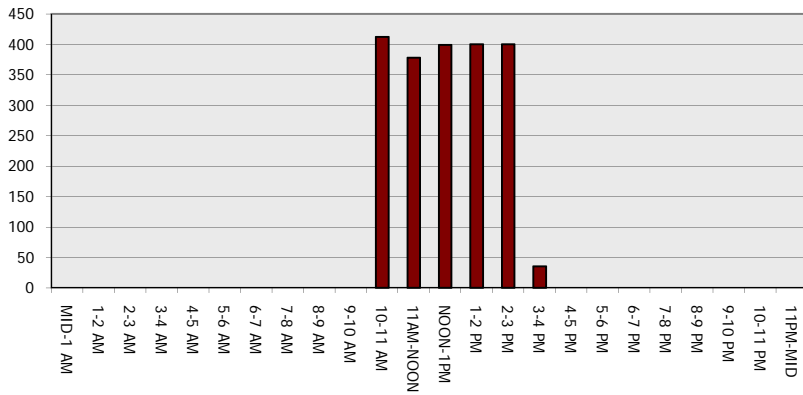
Main Route - Traffic Demand (Vehicles Per Hour)



Main Route Average Delay Per Vehicle (Minutes)



Main Route - Average Queue Length (Vehicles)



Main Route - Average Speed (MPH)

