

<b>IH 794: LINCOLN AVE TO LINCOLN MEMORIAL DR (MILWAUKEE COUNTY)</b> <b>OFF-PEAK DAY 2 LANE CLOSURE</b> <b>NO DIVERSION ROUTE (MAX QUEUE METHOD)</b>	<b>OCTOBER</b>
	Analyzed for 2009 Construction Season

**SUMMARY OF TRAFFIC MODEL OUTPUT**

MON-THUR                  WESTBOUND DIRECTION

TIME OF DAY	FLOWS AND CAPACITY IN VEH/HR						AVERAGE SPEEDS IN MPH			
	MAIN ROUTE		SITE CAPA CITY	FLOW		AV.DEL PER VEH (MINS)	AVERAGE QUEUE (VEH)	MAIN ROUTE		SITE
	DEMAND FLOW	PCT HEAVY		MAIN ROUTE	'DIVER TED'			WITHOUT WORK ZONE	WITH WORK ZONE	
MID-1 AM	132	0.0	OFF	132	0	0.00	0	70.2	70.2	70.2
1-2 AM	68	0.0	OFF	68	0	0.00	0	70.2	70.2	70.2
2-3 AM	68	0.0	OFF	68	0	0.00	0	70.2	70.2	70.2
3-4 AM	77	0.0	OFF	77	0	0.00	0	70.2	70.2	70.2
4-5 AM	175	0.0	OFF	175	0	0.00	0	70.2	70.2	70.2
5-6 AM	857	0.0	OFF	857	0	0.00	0	69.7	69.7	69.7
6-7 AM	2286	0.0	OFF	2286	0	0.00	0	67.9	67.9	67.9
7-8 AM	3992	0.0	OFF	3992	0	0.00	0	63.6	63.6	63.6
8-9 AM	3013	0.0	OFF	3013	0	0.00	0	67.0	67.0	67.0
9-10 AM	1324	0.0	OFF	1324	0	0.00	0	69.1	69.1	69.1
10-11 AM	1007	0.0	1500	1007	0	0.59	0	69.5	51.9	41.7
11AM-NOON	930	0.0	1500	930	0	0.58	0	69.6	52.1	41.9
NOON-1PM	987	0.0	1500	987	0	0.59	0	69.5	51.9	41.7
1-2 PM	1028	0.0	1500	1028	0	0.59	0	69.4	51.8	41.6
2-3 PM	1138	0.0	1500	1138	0	0.63	0	69.3	50.9	40.6
3-4 PM	1284	0.0	OFF	1284	0	0.00	0	69.1	69.1	69.1
4-5 PM	1307	0.0	OFF	1307	0	0.00	0	69.1	69.1	69.1
5-6 PM	1236	0.0	OFF	1236	0	0.00	0	69.2	69.2	69.2
6-7 PM	1001	0.0	OFF	1001	0	0.00	0	69.5	69.5	69.5
7-8 PM	686	0.0	OFF	686	0	0.00	0	69.9	69.9	69.9
8-9 PM	540	0.0	OFF	540	0	0.00	0	70.0	70.0	70.0
9-10 PM	500	0.0	OFF	500	0	0.00	0	70.1	70.1	70.1
10-11 PM	386	0.0	OFF	386	0	0.00	0	70.2	70.2	70.2
11PM-MID	252	0.0	OFF	252	0	0.00	0	70.2	70.2	70.2

**"OFF" INDICATES NO ROAD WORK (ALL LANES OPEN TO TRAFFIC)**

*----- SITE BREAKDOWN DELAYS -----*	
BREAKDOWN DURATION (MINS)	0
RANGE OF QUEUE DELAY - MIN (VEH-H) MAX	0.0
AV BREAKDOWNS PER DAY	0.00
AV QUEUE DELAY/DAY (VEH-H)	0.0
AV TOTAL DELAY/DAY (VEH-H)	0.0

*----- SITE ACCIDENT DELAYS -----*	
BREAKDOWN DURATION (MINS)	0
RANGE OF QUEUE DELAY - MIN (VEH-H) MAX	0
AV BREAKDOWNS PER DAY	0
AV QUEUE DELAY/DAY (VEH-H)	0
AV TOTAL DELAY/DAY (VEH-H)	0

AVERAGE ACCIDENT NUMBERS (PIA/DAY)	
MAIN ROUTE WITHOUT WORKS	0.0077
MAIN ROUTE WITH WORKS	0.0074
'DIVERSION'	0.0000
<small>PIA: Personal Injury Accidents</small>	
IMPACTS ON ROAD USERS	
ROAD USER COSTS PER DAY	\$631
CONGESTED HOURS PER DAY*	0

\*Delays Exceeding User-Specified Maximum

**IH 794: LINCOLN AVE TO LINCOLN MEMORIAL DR (MILWAUKEE COUNTY)**  
**OFF-PEAK DAY 2 LANE CLOSURE**  
**NO DIVERSION ROUTE (MAX QUEUE METHOD)**

**OCTOBER**

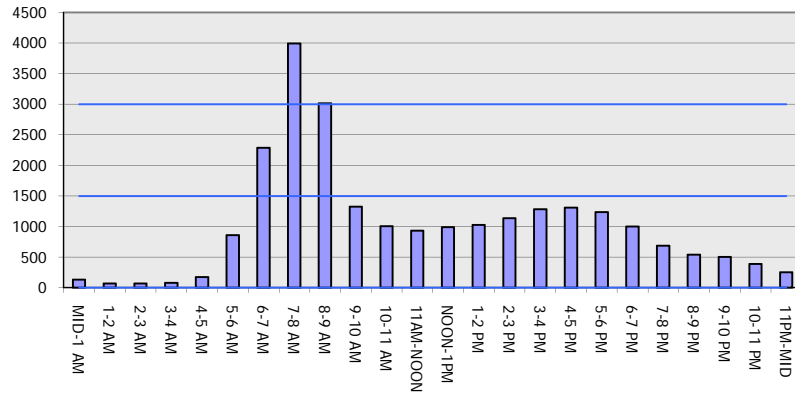
Analyzed for 2009  
 Construction Season

**GRAPHICAL REPRESENTATION OF TRAFFIC MODEL INPUT AND OUTPUT**

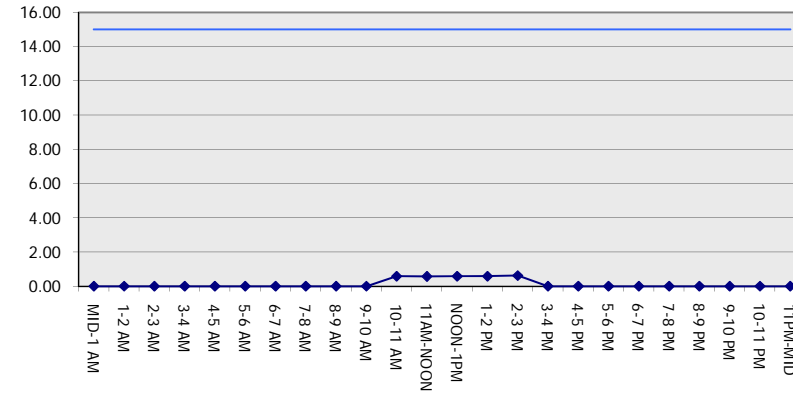
**MON-THUR**

**WESTBOUND DIRECTION**

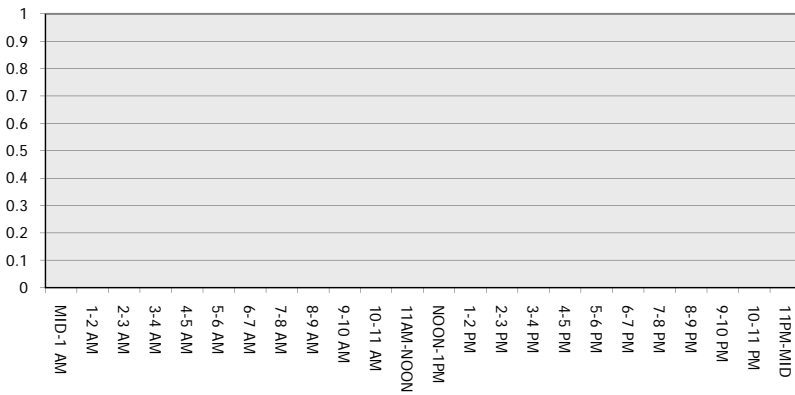
**Main Route - Traffic Demand (Vehicles Per Hour)**



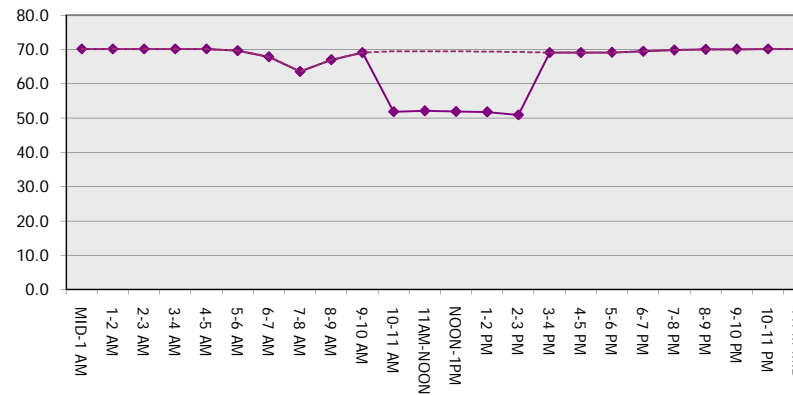
**Main Route Average Delay Per Vehicle (Minutes)**



**Main Route - Average Queue Length (Vehicles)**



**Main Route - Average Speed (MPH)**



<b>IH 794: LINCOLN AVE TO LINCOLN MEMORIAL DR (MILWAUKEE COUNTY)</b> <b>OFF-PEAK DAY 2 LANE CLOSURE</b> <b>NO DIVERSION ROUTE (MAX QUEUE METHOD)</b>	<b>OCTOBER</b>
	Analyzed for 2009 Construction Season

**SUMMARY OF TRAFFIC MODEL OUTPUT**

MON-THUR                      EASTBOUND DIRECTION

TIME OF DAY	FLOWS AND CAPACITY IN VEH/HR						AVERAGE SPEEDS IN MPH			
	MAIN ROUTE		SITE CAPA CITY	FLOW		AV.DEL PER VEH (MINS)	AVERAGE QUEUE (VEH)	MAIN ROUTE		SITE
	DEMAND FLOW	PCT HEAVY		MAIN ROUTE	'DIVER TED'			WITHOUT WORK ZONE	WITH WORK ZONE	
MID-1 AM	206	0.0	OFF	206	0	0.00	0	70.2	70.2	70.2
1-2 AM	133	0.0	OFF	133	0	0.00	0	70.2	70.2	70.2
2-3 AM	107	0.0	OFF	107	0	0.00	0	70.2	70.2	70.2
3-4 AM	84	0.0	OFF	84	0	0.00	0	70.2	70.2	70.2
4-5 AM	120	0.0	OFF	120	0	0.00	0	70.2	70.2	70.2
5-6 AM	306	0.0	OFF	306	0	0.00	0	70.2	70.2	70.2
6-7 AM	695	0.0	OFF	695	0	0.00	0	69.9	69.9	69.9
7-8 AM	1043	0.0	OFF	1043	0	0.00	0	69.4	69.4	69.4
8-9 AM	819	0.0	OFF	819	0	0.00	0	69.7	69.7	69.7
9-10 AM	689	0.0	OFF	689	0	0.00	0	69.9	69.9	69.9
10-11 AM	745	0.0	1500	745	0	0.56	0	69.8	52.7	42.6
11AM-NOON	948	0.0	1500	948	0	0.58	0	69.6	52.0	41.9
NOON-1PM	1102	0.0	1500	1102	0	0.60	0	69.4	51.5	41.3
1-2 PM	1111	0.0	1499	1111	0	0.64	0	69.4	50.7	40.3
2-3 PM	1670	0.0	1499	1670	0	2.24	45	68.7	30.1	30.8
3-4 PM	2377	0.0	OFF	2377	0	0.05	3	67.8	66.1	66.1
4-5 PM	3129	0.0	OFF	3129	0	0.00	0	66.8	66.8	66.8
5-6 PM	3444	0.0	OFF	3444	0	0.00	0	66.4	66.4	66.4
6-7 PM	1737	0.0	OFF	1737	0	0.00	0	68.6	68.6	68.6
7-8 PM	1167	0.0	OFF	1167	0	0.00	0	69.3	69.3	69.3
8-9 PM	956	0.0	OFF	956	0	0.00	0	69.6	69.6	69.6
9-10 PM	792	0.0	OFF	792	0	0.00	0	69.7	69.7	69.7
10-11 PM	665	0.0	OFF	665	0	0.00	0	69.9	69.9	69.9
11PM-MID	501	0.0	OFF	501	0	0.00	0	70.1	70.1	70.1

"OFF" INDICATES NO ROAD WORK (ALL LANES OPEN TO TRAFFIC)

*----- SITE BREAKDOWN DELAYS -----*	
BREAKDOWN DURATION (MINS)	0
RANGE OF QUEUE DELAY - MIN (VEH-H) MAX	0.0
AV BREAKDOWNS PER DAY	0.00
AV QUEUE DELAY/DAY (VEH-H)	0.0
AV TOTAL DELAY/DAY (VEH-H)	0.0

*----- SITE ACCIDENT DELAYS -----*	
BREAKDOWN DURATION (MINS)	0
RANGE OF QUEUE DELAY - MIN (VEH-H) MAX	0
AV BREAKDOWNS PER DAY	0
AV QUEUE DELAY/DAY (VEH-H)	0
AV TOTAL DELAY/DAY (VEH-H)	0

AVERAGE ACCIDENT NUMBERS (PIA/DAY)	
MAIN ROUTE WITHOUT WORKS	0.0078
MAIN ROUTE WITH WORKS	0.0074
'DIVERSION'	0.0000

PIA: Personal Injury Accidents

ECONOMIC IMPACT ON ROAD USERS	
ROAD USER COSTS PER DAY	\$1,287
CONGESTED HOURS PER DAY*	0

\*Delays Exceeding User-Specified Maximum

**IH 794: LINCOLN AVE TO LINCOLN MEMORIAL DR (MILWAUKEE COUNTY)**  
**OFF-PEAK DAY 2 LANE CLOSURE**  
**NO DIVERSION ROUTE (MAX QUEUE METHOD)**

**OCTOBER**

Analyzed for 2009  
 Construction Season

**GRAPHICAL REPRESENTATION OF TRAFFIC MODEL INPUT AND OUTPUT**

**MON-THUR EASTBOUND DIRECTION**

