

| | |
|--|--|
| IH 794: IH 43 TO LINCOLN MEMORIAL DR (MILWAUKEE COUNTY) OFF-PEAK DAY 2 LANE CLOSURE NO DIVERSION ROUTE (MAX QUEUE METHOD) | OCTOBER |
| | Analyzed for 2009 Construction Season |

SUMMARY OF TRAFFIC MODEL OUTPUT

SUNDAY WESTBOUND DIRECTION

| TIME OF DAY | FLOWS AND CAPACITY IN VEH/HR | | | | | | AVERAGE SPEEDS IN MPH | | | |
|-------------|------------------------------|-----------|----------------|------------|-------------|-----------------------|-----------------------|-------------------|----------------|------|
| | MAIN ROUTE | | SITE CAPA CITY | FLOW | | AV.DEL PER VEH (MINS) | AVERAGE QUEUE (VEH) | MAIN ROUTE | | SITE |
| | DEMAND FLOW | PCT HEAVY | | MAIN ROUTE | 'DIVER TED' | | | WITHOUT WORK ZONE | WITH WORK ZONE | |
| MID-1 AM | 508 | 0.0 | OFF | 508 | 0 | 0.00 | 0 | 70.1 | 70.1 | 70.1 |
| 1-2 AM | 417 | 0.0 | OFF | 417 | 0 | 0.00 | 0 | 70.2 | 70.2 | 70.2 |
| 2-3 AM | 402 | 0.0 | OFF | 402 | 0 | 0.00 | 0 | 70.2 | 70.2 | 70.2 |
| 3-4 AM | 234 | 0.0 | OFF | 234 | 0 | 0.00 | 0 | 70.2 | 70.2 | 70.2 |
| 4-5 AM | 157 | 0.0 | OFF | 157 | 0 | 0.00 | 0 | 70.2 | 70.2 | 70.2 |
| 5-6 AM | 199 | 0.0 | OFF | 199 | 0 | 0.00 | 0 | 70.2 | 70.2 | 70.2 |
| 6-7 AM | 336 | 0.0 | OFF | 336 | 0 | 0.00 | 0 | 70.2 | 70.2 | 70.2 |
| 7-8 AM | 466 | 0.0 | OFF | 466 | 0 | 0.00 | 0 | 70.2 | 70.2 | 70.2 |
| 8-9 AM | 631 | 0.0 | OFF | 631 | 0 | 0.00 | 0 | 69.9 | 69.9 | 69.9 |
| 9-10 AM | 843 | 0.0 | 1500 | 843 | 0 | 0.29 | 0 | 69.7 | 52.2 | 42.2 |
| 10-11 AM | 1151 | 0.0 | 1500 | 1151 | 0 | 0.33 | 0 | 69.3 | 50.4 | 40.1 |
| 11AM-NOON | 1306 | 0.0 | 1500 | 1306 | 0 | 0.43 | 0 | 69.1 | 46.3 | 35.3 |
| NOON-1PM | 1329 | 0.0 | 1500 | 1329 | 0 | 0.44 | 0 | 69.1 | 45.8 | 34.7 |
| 1-2 PM | 1248 | 0.0 | 1500 | 1248 | 0 | 0.39 | 0 | 69.2 | 47.8 | 37.0 |
| 2-3 PM | 1262 | 0.0 | 1500 | 1262 | 0 | 0.40 | 0 | 69.2 | 47.4 | 36.6 |
| 3-4 PM | 1383 | 0.0 | 1500 | 1383 | 0 | 0.48 | 0 | 69.0 | 44.5 | 33.4 |
| 4-5 PM | 1178 | 0.0 | 1500 | 1178 | 0 | 0.34 | 0 | 69.2 | 49.6 | 39.1 |
| 5-6 PM | 969 | 0.0 | 1500 | 969 | 0 | 0.30 | 0 | 69.6 | 51.8 | 41.8 |
| 6-7 PM | 897 | 0.0 | 1500 | 897 | 0 | 0.29 | 0 | 69.6 | 52.0 | 42.0 |
| 7-8 PM | 759 | 0.0 | OFF | 759 | 0 | 0.00 | 0 | 69.8 | 69.8 | 69.8 |
| 8-9 PM | 631 | 0.0 | OFF | 631 | 0 | 0.00 | 0 | 69.9 | 69.9 | 69.9 |
| 9-10 PM | 523 | 0.0 | OFF | 523 | 0 | 0.00 | 0 | 70.1 | 70.1 | 70.1 |
| 10-11 PM | 390 | 0.0 | OFF | 390 | 0 | 0.00 | 0 | 70.2 | 70.2 | 70.2 |
| 11PM-MID | 283 | 0.0 | OFF | 283 | 0 | 0.00 | 0 | 70.2 | 70.2 | 70.2 |

"OFF" INDICATES NO ROAD WORK (ALL LANES OPEN TO TRAFFIC)

| *----- SITE BREAKDOWN DELAYS -----* | |
|--|------|
| BREAKDOWN DURATION (MINS) | 0 |
| RANGE OF QUEUE DELAY - MIN (VEH-H) MAX | 0.0 |
| AV BREAKDOWNS PER DAY | 0.00 |
| AV QUEUE DELAY/DAY (VEH-H) | 0.0 |
| AV TOTAL DELAY/DAY (VEH-H) | 0.0 |

| *----- SITE ACCIDENT DELAYS -----* | |
|--|---|
| BREAKDOWN DURATION (MINS) | 0 |
| RANGE OF QUEUE DELAY - MIN (VEH-H) MAX | 0 |
| AV BREAKDOWNS PER DAY | 0 |
| AV QUEUE DELAY/DAY (VEH-H) | 0 |
| AV TOTAL DELAY/DAY (VEH-H) | 0 |

| AVERAGE ACCIDENT NUMBERS (PIA/DAY) | |
|------------------------------------|---------|
| MAIN ROUTE WITHOUT WORKS | 0.0028 |
| MAIN ROUTE WITH WORKS | 0.0015 |
| 'DIVERSION' | 0.0000 |
| PIA: Personal Injury Accidents | |
| IMPACTS ON ROAD USERS | |
| ROAD USER COSTS PER DAY | \$1,214 |
| CONGESTED HOURS PER DAY* | 0 |

*Delays Exceeding User-Specified Maximum

IH 794: IH 43 TO LINCOLN MEMORIAL DR (MILWAUKEE COUNTY)
OFF-PEAK DAY 2 LANE CLOSURE
NO DIVERSION ROUTE (MAX QUEUE METHOD)

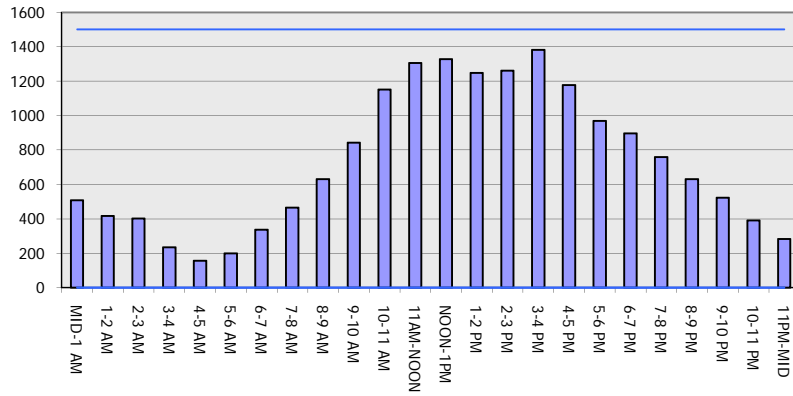
OCTOBER

Analyzed for 2009
 Construction Season

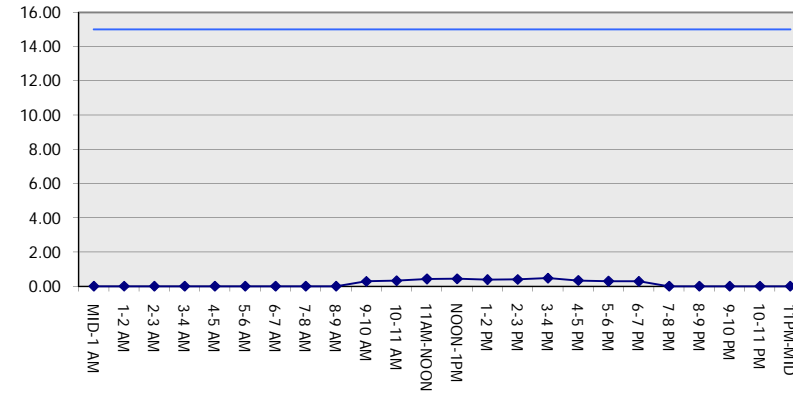
GRAPHICAL REPRESENTATION OF TRAFFIC MODEL INPUT AND OUTPUT

SUNDAY WESTBOUND DIRECTION

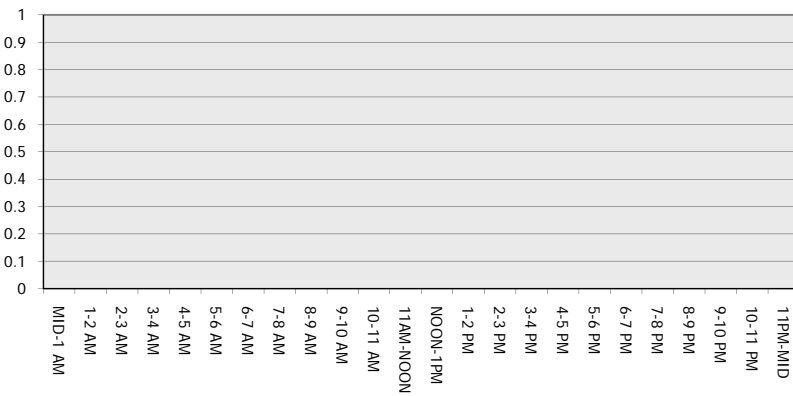
Main Route - Traffic Demand (Vehicles Per Hour)



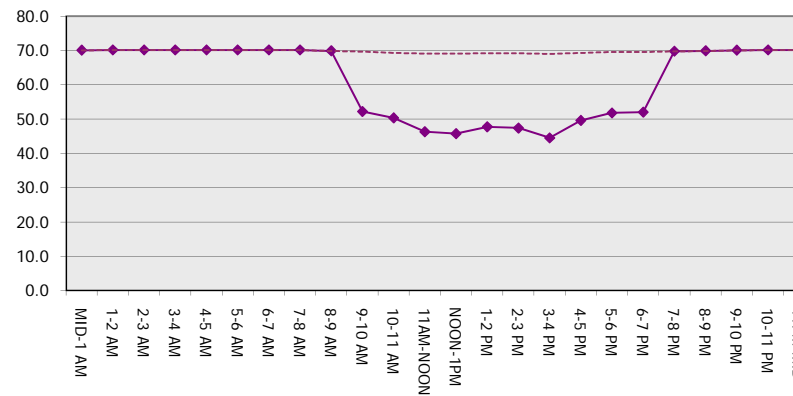
Main Route Average Delay Per Vehicle (Minutes)



Main Route - Average Queue Length (Vehicles)



Main Route - Average Speed (MPH)



| | |
|--|--|
| IH 794: IH 43 TO LINCOLN MEMORIAL DR (MILWAUKEE COUNTY) OFF-PEAK DAY 2 LANE CLOSURE NO DIVERSION ROUTE (MAX QUEUE METHOD) | OCTOBER |
| | Analyzed for 2009 Construction Season |

SUMMARY OF TRAFFIC MODEL OUTPUT

SUNDAY EASTBOUND DIRECTION

| TIME OF DAY | FLOWS AND CAPACITY IN VEH/HR | | | | | | AVERAGE SPEEDS IN MPH | | | |
|-------------|------------------------------|-----------|----------------|------------|-------------|-----------------------|-----------------------|-------------------|----------------|------|
| | MAIN ROUTE | | SITE CAPA CITY | FLOW | | AV.DEL PER VEH (MINS) | AVERAGE QUEUE (VEH) | MAIN ROUTE | | SITE |
| | DEMAND FLOW | PCT HEAVY | | MAIN ROUTE | 'DIVER TED' | | | WITHOUT WORK ZONE | WITH WORK ZONE | |
| MID-1 AM | 854 | 0.0 | OFF | 854 | 0 | 0.00 | 0 | 69.7 | 69.7 | 69.7 |
| 1-2 AM | 498 | 0.0 | OFF | 498 | 0 | 0.00 | 0 | 70.1 | 70.1 | 70.1 |
| 2-3 AM | 335 | 0.0 | OFF | 335 | 0 | 0.00 | 0 | 70.2 | 70.2 | 70.2 |
| 3-4 AM | 227 | 0.0 | OFF | 227 | 0 | 0.00 | 0 | 70.2 | 70.2 | 70.2 |
| 4-5 AM | 219 | 0.0 | OFF | 219 | 0 | 0.00 | 0 | 70.2 | 70.2 | 70.2 |
| 5-6 AM | 402 | 0.0 | OFF | 402 | 0 | 0.00 | 0 | 70.2 | 70.2 | 70.2 |
| 6-7 AM | 582 | 0.0 | OFF | 582 | 0 | 0.00 | 0 | 70.0 | 70.0 | 70.0 |
| 7-8 AM | 829 | 0.0 | OFF | 829 | 0 | 0.00 | 0 | 69.7 | 69.7 | 69.7 |
| 8-9 AM | 1338 | 0.0 | OFF | 1338 | 0 | 0.00 | 0 | 69.1 | 69.1 | 69.1 |
| 9-10 AM | 1682 | 0.0 | 1499 | 1682 | 0 | 2.38 | 67 | 68.6 | 18.4 | 30.8 |
| 10-11 AM | 2070 | 0.0 | 1500 | 1733 | 337 | 13.99+ | 359 | 68.2 | 5.9 | 30.8 |
| 11AM-NOON | 2523 | 0.0 | 1500 | 1503 | 1020 | 16.69+ | 423 | 67.6 | 5.4 | 30.8 |
| NOON-1PM | 2675 | 0.0 | 1500 | 1506 | 1169 | 16.73+ | 424 | 67.4 | 5.4 | 30.8 |
| 1-2 PM | 2627 | 0.0 | 1500 | 1501 | 1126 | 16.71+ | 423 | 67.4 | 5.4 | 30.8 |
| 2-3 PM | 2406 | 0.0 | 1500 | 1500 | 906 | 16.68+ | 422 | 67.8 | 5.4 | 30.8 |
| 3-4 PM | 2503 | 0.0 | 1499 | 1500 | 1003 | 16.68+ | 422 | 67.6 | 5.4 | 30.8 |
| 4-5 PM | 2755 | 0.0 | 1499 | 1502 | 1252 | 16.80+ | 426 | 67.3 | 5.4 | 30.8 |
| 5-6 PM | 2754 | 0.0 | 1500 | 1500 | 1254 | 16.80+ | 426 | 67.3 | 5.4 | 30.8 |
| 6-7 PM | 2502 | 0.0 | 1500 | 1500 | 1002 | 16.68+ | 422 | 67.6 | 5.4 | 30.8 |
| 7-8 PM | 2020 | 0.0 | OFF | 2020 | 0 | 0.23 | 22 | 68.2 | 53.8 | 53.8 |
| 8-9 PM | 1690 | 0.0 | OFF | 1690 | 0 | 0.00 | 0 | 68.6 | 68.6 | 68.6 |
| 9-10 PM | 1408 | 0.0 | OFF | 1408 | 0 | 0.00 | 0 | 69.0 | 69.0 | 69.0 |
| 10-11 PM | 966 | 0.0 | OFF | 966 | 0 | 0.00 | 0 | 69.6 | 69.6 | 69.6 |
| 11PM-MID | 545 | 0.0 | OFF | 545 | 0 | 0.00 | 0 | 70.0 | 70.0 | 70.0 |

"OFF" INDICATES NO ROAD WORK (ALL LANES OPEN TO TRAFFIC)

+ INDICATES QUEUEING EXCEEDS USER-SPECIFIED MAXIMUM LIMIT

| *----- SITE BREAKDOWN DELAYS -----* | |
|-------------------------------------|------|
| BREAKDOWN DURATION (MINS) | 0 |
| RANGE OF QUEUE DELAY - MIN | 0.0 |
| (VEH-H) MAX | 0.0 |
| AV BREAKDOWNS PER DAY | 0.00 |
| AV QUEUE DELAY/DAY (VEH-H) | 0.0 |
| AV TOTAL DELAY/DAY (VEH-H) | 0.0 |

| *----- SITE ACCIDENT DELAYS -----* | |
|------------------------------------|---|
| BREAKDOWN DURATION (MINS) | 0 |
| RANGE OF QUEUE DELAY - MIN | 0 |
| (VEH-H) MAX | 0 |
| AV BREAKDOWNS PER DAY | 0 |
| AV QUEUE DELAY/DAY (VEH-H) | 0 |
| AV TOTAL DELAY/DAY (VEH-H) | 0 |

| AVERAGE ACCIDENT NUMBERS (PIA/DAY) | |
|------------------------------------|--------|
| MAIN ROUTE WITHOUT WORKS | 0.0058 |
| MAIN ROUTE WITH WORKS | 0.0027 |
| 'DIVERSION' | 0.0033 |

PIA: Personal Injury Accidents

| ECONOMIC IMPACT ON ROAD USERS | |
|-------------------------------|-----------|
| ROAD USER COSTS PER DAY | \$105,476 |
| CONGESTED HOURS PER DAY* | 9 |

*Delays Exceeding User-Specified Maximum

IH 794: IH 43 TO LINCOLN MEMORIAL DR (MILWAUKEE COUNTY)
OFF-PEAK DAY 2 LANE CLOSURE
NO DIVERSION ROUTE (MAX QUEUE METHOD)

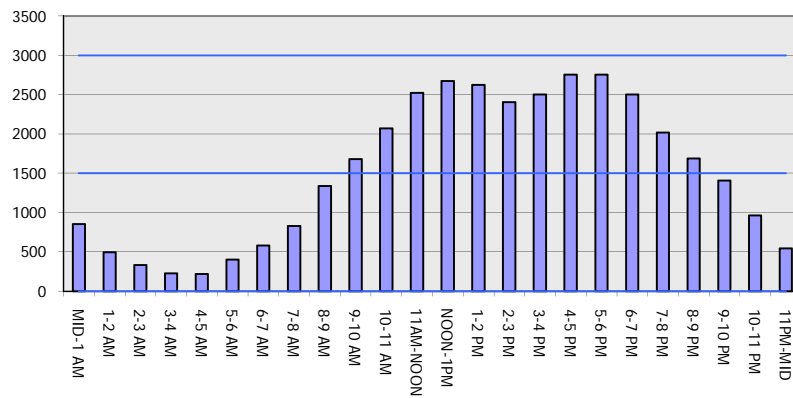
OCTOBER

Analyzed for 2009
 Construction Season

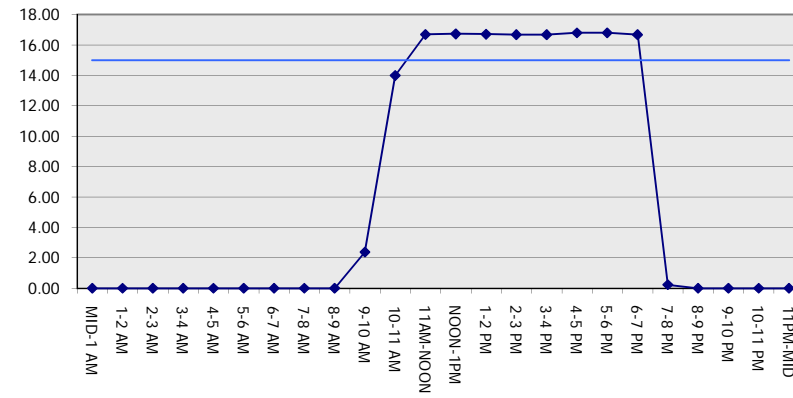
GRAPHICAL REPRESENTATION OF TRAFFIC MODEL INPUT AND OUTPUT

SUNDAY EASTBOUND DIRECTION

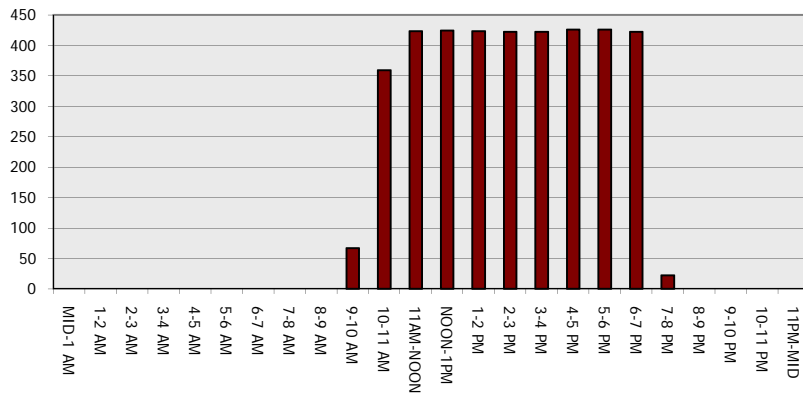
Main Route - Traffic Demand (Vehicles Per Hour)



Main Route Average Delay Per Vehicle (Minutes)



Main Route - Average Queue Length (Vehicles)



Main Route - Average Speed (MPH)

