

<b>IH 794: IH 43 TO LINCOLN MEMORIAL DR (MILWAUKEE COUNTY)</b> <b>OFF-PEAK DAY 2 LANE CLOSURE</b> <b>NO DIVERSION ROUTE (MAX QUEUE METHOD)</b>	<b>OCTOBER</b>
	Analyzed for 2009 Construction Season

**SUMMARY OF TRAFFIC MODEL OUTPUT**

SATURDAY WESTBOUND DIRECTION

TIME OF DAY	FLOWS AND CAPACITY IN VEH/HR						AVERAGE SPEEDS IN MPH			
	MAIN ROUTE		SITE CAPA CITY	FLOW		AV.DEL PER VEH (MINS)	AVERAGE QUEUE (VEH)	MAIN ROUTE		SITE
	DEMAND FLOW	PCT HEAVY		MAIN ROUTE	'DIVER TED'			WITHOUT WORK ZONE	WITH WORK ZONE	
MID-1 AM	422	0.0	OFF	422	0	0.00	0	70.2	70.2	70.2
1-2 AM	396	0.0	OFF	396	0	0.00	0	70.2	70.2	70.2
2-3 AM	324	0.0	OFF	324	0	0.00	0	70.2	70.2	70.2
3-4 AM	207	0.0	OFF	207	0	0.00	0	70.2	70.2	70.2
4-5 AM	206	0.0	OFF	206	0	0.00	0	70.2	70.2	70.2
5-6 AM	307	0.0	OFF	307	0	0.00	0	70.2	70.2	70.2
6-7 AM	554	0.0	OFF	554	0	0.00	0	70.0	70.0	70.0
7-8 AM	879	0.0	OFF	879	0	0.00	0	69.6	69.6	69.6
8-9 AM	1086	0.0	1500	1086	0	0.30	0	69.4	51.4	41.4
9-10 AM	1252	0.0	1500	1252	0	0.39	0	69.2	47.6	36.9
10-11 AM	1456	0.0	1499	1456	0	0.53	0	68.9	43.0	31.7
11AM-NOON	1546	0.0	1499	1546	0	1.30	21	68.8	27.6	30.8
NOON-1PM	1503	0.0	1499	1503	0	2.48	50	68.9	17.9	30.8
1-2 PM	1467	0.0	1499	1467	0	1.79	33	68.9	22.5	30.8
2-3 PM	1481	0.0	1500	1481	0	0.86	8	68.9	34.6	31.0
3-4 PM	1393	0.0	1500	1393	0	0.49	0	69.0	44.3	33.1
4-5 PM	1303	0.0	1500	1303	0	0.43	0	69.1	46.4	35.4
5-6 PM	1034	0.0	1500	1034	0	0.30	0	69.4	51.6	41.5
6-7 PM	1036	0.0	OFF	1036	0	0.00	0	69.4	69.4	69.4
7-8 PM	818	0.0	OFF	818	0	0.00	0	69.7	69.7	69.7
8-9 PM	843	0.0	OFF	843	0	0.00	0	69.7	69.7	69.7
9-10 PM	849	0.0	OFF	849	0	0.00	0	69.7	69.7	69.7
10-11 PM	841	0.0	OFF	841	0	0.00	0	69.7	69.7	69.7
11PM-MID	674	0.0	OFF	674	0	0.00	0	69.9	69.9	69.9

"OFF" INDICATES NO ROAD WORK (ALL LANES OPEN TO TRAFFIC)

*----- SITE BREAKDOWN DELAYS -----*	
BREAKDOWN DURATION (MINS)	0
RANGE OF QUEUE DELAY - MIN (VEH-H) MAX	0.0
AV BREAKDOWNS PER DAY	0.00
AV QUEUE DELAY/DAY (VEH-H)	0.0
AV TOTAL DELAY/DAY (VEH-H)	0.0

*----- SITE ACCIDENT DELAYS -----*	
BREAKDOWN DURATION (MINS)	0
RANGE OF QUEUE DELAY - MIN (VEH-H) MAX	0
AV BREAKDOWNS PER DAY	0
AV QUEUE DELAY/DAY (VEH-H)	0
AV TOTAL DELAY/DAY (VEH-H)	0

AVERAGE ACCIDENT NUMBERS (PIA/DAY)	
MAIN ROUTE WITHOUT WORKS	0.0035
MAIN ROUTE WITH WORKS	0.0020
'DIVERSION'	0.0000
<small>PIA: Personal Injury Accidents</small>	
IMPACTS ON ROAD USERS	
ROAD USER COSTS PER DAY	\$3,514
CONGESTED HOURS PER DAY*	0

\*Delays Exceeding User-Specified Maximum

**IH 794: IH 43 TO LINCOLN MEMORIAL DR (MILWAUKEE COUNTY)**  
**OFF-PEAK DAY 2 LANE CLOSURE**  
**NO DIVERSION ROUTE (MAX QUEUE METHOD)**

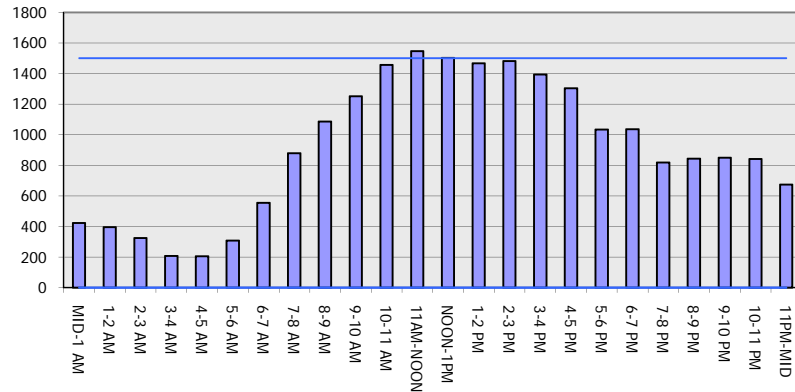
**OCTOBER**

Analyzed for 2009  
 Construction Season

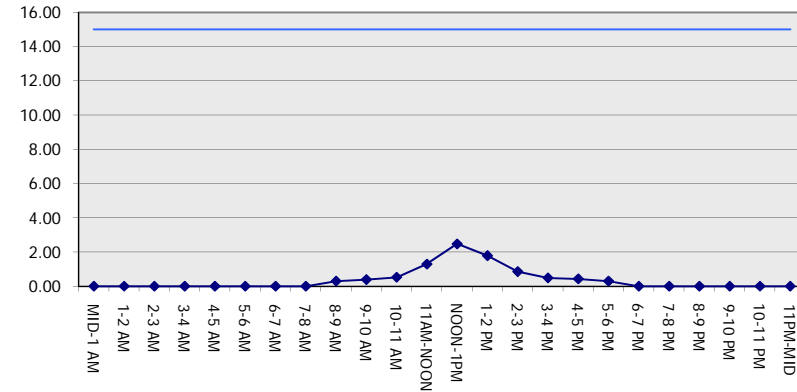
**GRAPHICAL REPRESENTATION OF TRAFFIC MODEL INPUT AND OUTPUT**

**SATURDAY WESTBOUND DIRECTION**

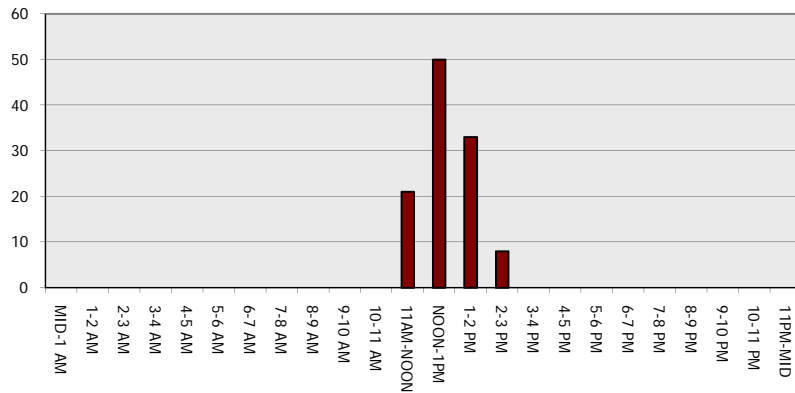
**Main Route - Traffic Demand (Vehicles Per Hour)**



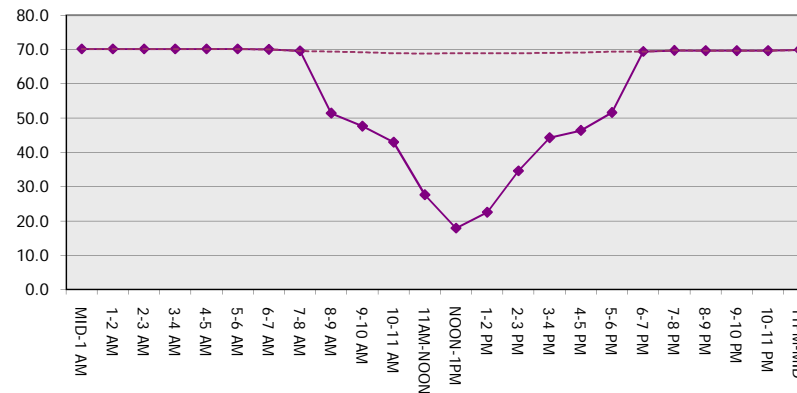
**Main Route Average Delay Per Vehicle (Minutes)**



**Main Route - Average Queue Length (Vehicles)**



**Main Route - Average Speed (MPH)**



<b>IH 794: IH 43 TO LINCOLN MEMORIAL DR (MILWAUKEE COUNTY)</b> <b>OFF-PEAK DAY 2 LANE CLOSURE</b> <b>NO DIVERSION ROUTE (MAX QUEUE METHOD)</b>	<b>OCTOBER</b>
	Analyzed for 2009 Construction Season

**SUMMARY OF TRAFFIC MODEL OUTPUT**

SATURDAY EASTBOUND DIRECTION

TIME OF DAY	FLOWS AND CAPACITY IN VEH/HR						AVERAGE SPEEDS IN MPH			
	MAIN ROUTE		SITE CAPA CITY	FLOW		AV.DEL PER VEH (MINS)	AVERAGE QUEUE (VEH)	MAIN ROUTE		SITE
	DEMAND FLOW	PCT HEAVY		MAIN ROUTE	'DIVER TED'			WITHOUT WORK ZONE	WITH WORK ZONE	
MID-1 AM	756	0.0	OFF	756	0	0.00	0	69.8	69.8	69.8
1-2 AM	406	0.0	OFF	406	0	0.00	0	70.2	70.2	70.2
2-3 AM	336	0.0	OFF	336	0	0.00	0	70.2	70.2	70.2
3-4 AM	270	0.0	OFF	270	0	0.00	0	70.2	70.2	70.2
4-5 AM	304	0.0	OFF	304	0	0.00	0	70.2	70.2	70.2
5-6 AM	736	0.0	OFF	736	0	0.00	0	69.8	69.8	69.8
6-7 AM	1081	0.0	OFF	1081	0	0.00	0	69.4	69.4	69.4
7-8 AM	1611	0.0	OFF	1611	0	0.00	0	68.7	68.7	68.7
8-9 AM	2196	0.0	1499	1883	314	10.03+	279	68.0	7.1	30.8
9-10 AM	2318	0.0	1499	1506	811	16.68+	422	67.9	5.4	30.8
10-11 AM	2563	0.0	1500	1517	1047	16.74+	424	67.6	5.4	30.8
11AM-NOON	2760	0.0	1500	1516	1244	16.80+	426	67.3	5.4	30.8
NOON-1PM	2910	0.0	1500	1506	1404	16.93+	429	67.1	5.4	30.8
1-2 PM	2821	0.0	1500	1500	1321	16.86+	427	67.3	5.4	30.8
2-3 PM	3000	0.0	1499	1504	1497	17.01+	431	67.0	5.3	30.8
3-4 PM	3179	0.0	1499	1502	1677	17.14+	435	66.8	5.3	30.8
4-5 PM	3311	0.0	1500	1500	1811	17.14+	435	66.6	5.3	30.8
5-6 PM	3555	0.0	1500	1500	2055	17.14+	435	66.3	5.3	30.8
6-7 PM	3535	0.0	OFF	3535	0	0.42	38	66.3	45.4	45.4
7-8 PM	2650	0.0	OFF	2650	0	0.00	0	67.4	67.4	67.4
8-9 PM	2133	0.0	OFF	2133	0	0.00	0	68.1	68.1	68.1
9-10 PM	2204	0.0	OFF	2204	0	0.00	0	68.0	68.0	68.0
10-11 PM	1998	0.0	OFF	1998	0	0.00	0	68.2	68.2	68.2
11PM-MID	1486	0.0	OFF	1486	0	0.00	0	68.9	68.9	68.9

"OFF" INDICATES NO ROAD WORK (ALL LANES OPEN TO TRAFFIC)

+ INDICATES QUEUEING EXCEEDS USER-SPECIFIED MAXIMUM LIMIT

*----- SITE BREAKDOWN DELAYS -----*	
BREAKDOWN DURATION (MINS)	0
RANGE OF QUEUE DELAY - MIN (VEH-H) MAX	0.0
AV BREAKDOWNS PER DAY	0.00
AV QUEUE DELAY/DAY (VEH-H)	0.0
AV TOTAL DELAY/DAY (VEH-H)	0.0

*----- SITE ACCIDENT DELAYS -----*	
BREAKDOWN DURATION (MINS)	0
RANGE OF QUEUE DELAY - MIN (VEH-H) MAX	0
AV BREAKDOWNS PER DAY	0
AV QUEUE DELAY/DAY (VEH-H)	0
AV TOTAL DELAY/DAY (VEH-H)	0

AVERAGE ACCIDENT NUMBERS (PIA/DAY)	
MAIN ROUTE WITHOUT WORKS	0.0077
MAIN ROUTE WITH WORKS	0.0039
'DIVERSION'	0.0049

PIA: Personal Injury Accidents

ECONOMIC IMPACT ON ROAD USERS	
ROAD USER COSTS PER DAY	\$129,673
CONGESTED HOURS PER DAY*	10

\*Delays Exceeding User-Specified Maximum

**IH 794: IH 43 TO LINCOLN MEMORIAL DR (MILWAUKEE COUNTY)**  
**OFF-PEAK DAY 2 LANE CLOSURE**  
**NO DIVERSION ROUTE (MAX QUEUE METHOD)**

**OCTOBER**

Analyzed for 2009  
 Construction Season

**GRAPHICAL REPRESENTATION OF TRAFFIC MODEL INPUT AND OUTPUT**  
**SATURDAY EASTBOUND DIRECTION**

