

IH 794: IH 43 TO LINCOLN MEMORIAL DR (MILWAUKEE COUNTY) OFF-PEAK DAY 2 LANE CLOSURE NO DIVERSION ROUTE (MAX QUEUE METHOD)	OCTOBER
	Analyzed for 2009 Construction Season

SUMMARY OF TRAFFIC MODEL OUTPUT

MON-THUR WESTBOUND DIRECTION

TIME OF DAY	FLOWS AND CAPACITY IN VEH/HR						AVERAGE SPEEDS IN MPH			
	MAIN ROUTE		SITE CAPA CITY	FLOW		AV.DEL PER VEH (MINS)	AVERAGE QUEUE (VEH)	MAIN ROUTE		SITE
	DEMAND FLOW	PCT HEAVY		MAIN ROUTE	'DIVER TED'			WITHOUT WORK ZONE	WITH WORK ZONE	
MID-1 AM	227	0.0	OFF	227	0	0.00	0	70.2	70.2	70.2
1-2 AM	172	0.0	OFF	172	0	0.00	0	70.2	70.2	70.2
2-3 AM	139	0.0	OFF	139	0	0.00	0	70.2	70.2	70.2
3-4 AM	146	0.0	OFF	146	0	0.00	0	70.2	70.2	70.2
4-5 AM	269	0.0	OFF	269	0	0.00	0	70.2	70.2	70.2
5-6 AM	797	0.0	OFF	797	0	0.00	0	69.7	69.7	69.7
6-7 AM	2037	0.0	OFF	2037	0	0.00	0	68.2	68.2	68.2
7-8 AM	2643	0.0	OFF	2643	0	0.00	0	67.4	67.4	67.4
8-9 AM	1720	0.0	OFF	1720	0	0.00	0	68.6	68.6	68.6
9-10 AM	1197	0.0	OFF	1197	0	0.00	0	69.2	69.2	69.2
10-11 AM	1216	0.0	1500	1216	0	0.37	0	69.2	48.6	37.9
11AM-NOON	1405	0.0	1500	1405	0	0.49	0	69.0	44.0	32.9
NOON-1PM	1466	0.0	1499	1466	0	0.53	0	68.9	42.7	31.5
1-2 PM	1668	0.0	1499	1668	0	2.34	64	68.7	18.7	30.8
2-3 PM	2090	0.0	1500	1756	334	13.92+	359	68.1	5.9	30.8
3-4 PM	2289	0.0	OFF	2289	0	0.25	24	67.9	53.0	53.0
4-5 PM	2267	0.0	OFF	2267	0	0.00	0	67.9	67.9	67.9
5-6 PM	2107	0.0	OFF	2107	0	0.00	0	68.1	68.1	68.1
6-7 PM	1590	0.0	OFF	1590	0	0.00	0	68.7	68.7	68.7
7-8 PM	1160	0.0	OFF	1160	0	0.00	0	69.3	69.3	69.3
8-9 PM	1031	0.0	OFF	1031	0	0.00	0	69.4	69.4	69.4
9-10 PM	827	0.0	OFF	827	0	0.00	0	69.7	69.7	69.7
10-11 PM	539	0.0	OFF	539	0	0.00	0	70.0	70.0	70.0
11PM-MID	366	0.0	OFF	366	0	0.00	0	70.2	70.2	70.2

"OFF" INDICATES NO ROAD WORK (ALL LANES OPEN TO TRAFFIC)

+ INDICATES QUEUEING EXCEEDS USER-SPECIFIED MAXIMUM LIMIT

----- SITE BREAKDOWN DELAYS -----	
BREAKDOWN DURATION (MINS)	0
RANGE OF QUEUE DELAY - MIN (VEH-H) MAX	0.0
AV BREAKDOWNS PER DAY	0.00
AV QUEUE DELAY/DAY (VEH-H)	0.0
AV TOTAL DELAY/DAY (VEH-H)	0.0

----- SITE ACCIDENT DELAYS -----	
BREAKDOWN DURATION (MINS)	0
RANGE OF QUEUE DELAY - MIN (VEH-H) MAX	0
AV BREAKDOWNS PER DAY	0
AV QUEUE DELAY/DAY (VEH-H)	0
AV TOTAL DELAY/DAY (VEH-H)	0

AVERAGE ACCIDENT NUMBERS (PIA/DAY)	
MAIN ROUTE WITHOUT WORKS	0.0047
MAIN ROUTE WITH WORKS	0.0038
'DIVERSION'	0.0001
PIA: Personal Injury Accidents	
IMPACTS ON ROAD USERS	
ROAD USER COSTS PER DAY	\$7,636
CONGESTED HOURS PER DAY*	1

*Delays Exceeding User-Specified Maximum

IH 794: IH 43 TO LINCOLN MEMORIAL DR (MILWAUKEE COUNTY)
OFF-PEAK DAY 2 LANE CLOSURE
NO DIVERSION ROUTE (MAX QUEUE METHOD)

OCTOBER

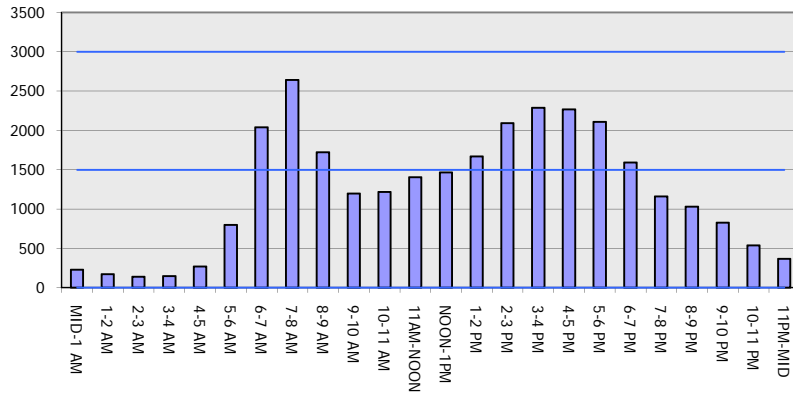
Analyzed for 2009
 Construction Season

GRAPHICAL REPRESENTATION OF TRAFFIC MODEL INPUT AND OUTPUT

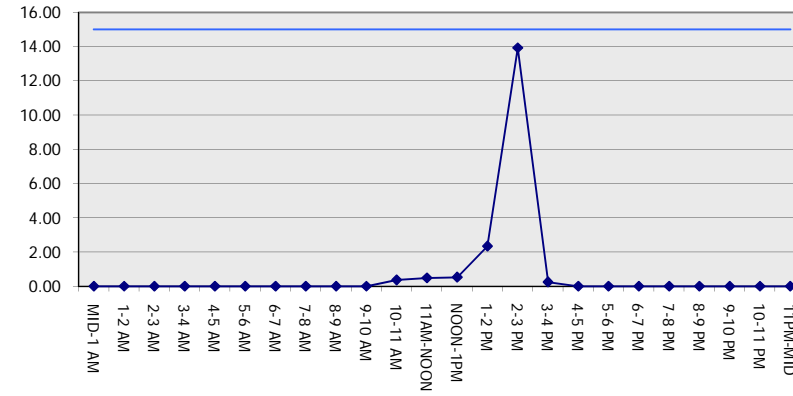
MON-THUR

WESTBOUND DIRECTION

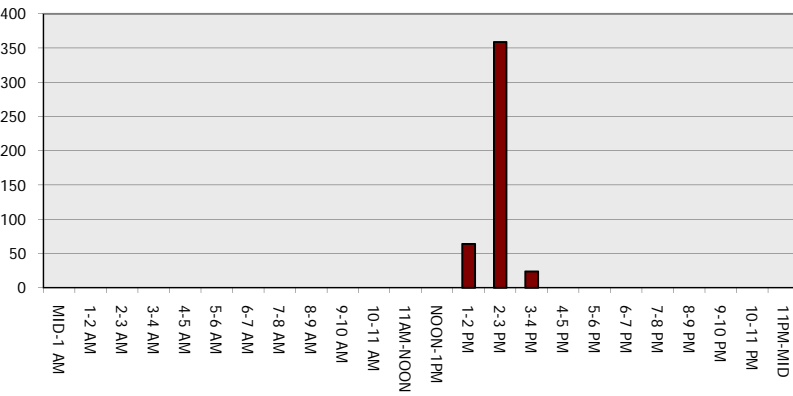
Main Route - Traffic Demand (Vehicles Per Hour)



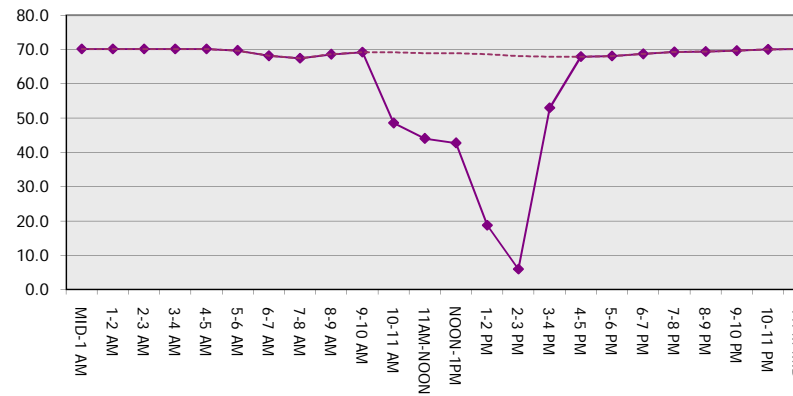
Main Route Average Delay Per Vehicle (Minutes)



Main Route - Average Queue Length (Vehicles)



Main Route - Average Speed (MPH)



IH 794: IH 43 TO LINCOLN MEMORIAL DR (MILWAUKEE COUNTY) OFF-PEAK DAY 2 LANE CLOSURE NO DIVERSION ROUTE (MAX QUEUE METHOD)	OCTOBER
	Analyzed for 2009 Construction Season

SUMMARY OF TRAFFIC MODEL OUTPUT

MON-THUR EASTBOUND DIRECTION

TIME OF DAY	FLOWS AND CAPACITY IN VEH/HR						AVERAGE SPEEDS IN MPH			
	MAIN ROUTE		SITE CAPA CITY	FLOW		AV.DEL PER VEH (MINS)	AVERAGE QUEUE (VEH)	MAIN ROUTE		SITE
	DEMAND FLOW	PCT HEAVY		MAIN ROUTE	'DIVER TED'			WITHOUT WORK ZONE	WITH WORK ZONE	
MID-1 AM	337	0.0	OFF	337	0	0.00	0	70.2	70.2	70.2
1-2 AM	232	0.0	OFF	232	0	0.00	0	70.2	70.2	70.2
2-3 AM	193	0.0	OFF	193	0	0.00	0	70.2	70.2	70.2
3-4 AM	240	0.0	OFF	240	0	0.00	0	70.2	70.2	70.2
4-5 AM	587	0.0	OFF	587	0	0.00	0	70.0	70.0	70.0
5-6 AM	2471	0.0	OFF	2471	0	0.00	0	67.7	67.7	67.7
6-7 AM	4996	0.0	OFF	4996	0	0.00	0	56.7	56.7	56.7
7-8 AM	5557	0.0	OFF	5557	0	0.00	0	52.9	52.9	52.9
8-9 AM	5091	0.0	OFF	5091	0	0.00	0	56.1	56.1	56.1
9-10 AM	3358	0.0	OFF	3358	0	0.00	0	66.6	66.6	66.6
10-11 AM	2813	0.0	1499	1751	1063	14.68+	377	67.3	5.8	35.6
11AM-NOON	2988	0.0	1499	1649	1339	16.62+	422	67.0	5.4	30.8
NOON-1PM	2936	0.0	1500	1524	1411	16.94+	429	67.1	5.4	30.8
1-2 PM	2925	0.0	1500	1505	1420	16.94+	430	67.1	5.4	30.8
2-3 PM	3049	0.0	1500	1504	1545	17.05+	433	66.9	5.3	30.8
3-4 PM	3449	0.0	OFF	3449	0	0.40	36	66.4	46.1	46.1
4-5 PM	4112	0.0	OFF	4112	0	0.00	0	62.8	62.8	62.8
5-6 PM	4238	0.0	OFF	4238	0	0.00	0	61.9	61.9	61.9
6-7 PM	3343	0.0	OFF	3343	0	0.00	0	66.6	66.6	66.6
7-8 PM	2321	0.0	OFF	2321	0	0.00	0	67.9	67.9	67.9
8-9 PM	2071	0.0	OFF	2071	0	0.00	0	68.2	68.2	68.2
9-10 PM	1758	0.0	OFF	1758	0	0.00	0	68.6	68.6	68.6
10-11 PM	1247	0.0	OFF	1247	0	0.00	0	69.2	69.2	69.2
11PM-MID	717	0.0	OFF	717	0	0.00	0	69.9	69.9	69.9

"OFF" INDICATES NO ROAD WORK (ALL LANES OPEN TO TRAFFIC)

+ INDICATES QUEUEING EXCEEDS USER-SPECIFIED MAXIMUM LIMIT

----- SITE BREAKDOWN DELAYS -----	
BREAKDOWN DURATION (MINS)	0
RANGE OF QUEUE DELAY - MIN (VEH-H) MAX	0.0
AV BREAKDOWNS PER DAY	0.00
AV QUEUE DELAY/DAY (VEH-H)	0.0
AV TOTAL DELAY/DAY (VEH-H)	0.0

----- SITE ACCIDENT DELAYS -----	
BREAKDOWN DURATION (MINS)	0
RANGE OF QUEUE DELAY - MIN (VEH-H) MAX	0
AV BREAKDOWNS PER DAY	0
AV QUEUE DELAY/DAY (VEH-H)	0
AV TOTAL DELAY/DAY (VEH-H)	0

AVERAGE ACCIDENT NUMBERS (PIA/DAY)	
MAIN ROUTE WITHOUT WORKS	0.0097
MAIN ROUTE WITH WORKS	0.0078
'DIVERSION'	0.0025

PIA: Personal Injury Accidents

ECONOMIC IMPACT ON ROAD USERS	
ROAD USER COSTS PER DAY	\$52,426
CONGESTED HOURS PER DAY*	5

*Delays Exceeding User-Specified Maximum

IH 794: IH 43 TO LINCOLN MEMORIAL DR (MILWAUKEE COUNTY)
OFF-PEAK DAY 2 LANE CLOSURE
NO DIVERSION ROUTE (MAX QUEUE METHOD)

OCTOBER

Analyzed for 2009
 Construction Season

GRAPHICAL REPRESENTATION OF TRAFFIC MODEL INPUT AND OUTPUT

MON-THUR EASTBOUND DIRECTION

