

<b>IH 794: IH 43 TO LINCOLN MEMORIAL DR (MILWAUKEE COUNTY)</b> <b>OFF-PEAK DAY CLOSURE</b> <b>NO DIVERSION ROUTE (MAX QUEUE METHOD)</b>	<b>OCTOBER</b>
	Analyzed for 2009 Construction Season

**SUMMARY OF TRAFFIC MODEL OUTPUT**

MON-THUR                  WESTBOUND DIRECTION

TIME OF DAY	FLOWS AND CAPACITY IN VEH/HR						AVERAGE SPEEDS IN MPH			
	MAIN ROUTE		SITE CAPA CITY	FLOW		AV.DEL PER VEH (MINS)	AVERAGE QUEUE (VEH)	MAIN ROUTE		SITE
	DEMAND FLOW	PCT HEAVY		MAIN ROUTE	'DIVER TED'			WITHOUT WORK ZONE	WITH WORK ZONE	
MID-1 AM	227	0.0	OFF	227	0	0.00	0	70.2	70.2	70.2
1-2 AM	172	0.0	OFF	172	0	0.00	0	70.2	70.2	70.2
2-3 AM	139	0.0	OFF	139	0	0.00	0	70.2	70.2	70.2
3-4 AM	146	0.0	OFF	146	0	0.00	0	70.2	70.2	70.2
4-5 AM	269	0.0	OFF	269	0	0.00	0	70.2	70.2	70.2
5-6 AM	797	0.0	OFF	797	0	0.00	0	69.7	69.7	69.7
6-7 AM	2037	0.0	OFF	2037	0	0.00	0	68.2	68.2	68.2
7-8 AM	2643	0.0	OFF	2643	0	0.00	0	67.4	67.4	67.4
8-9 AM	1720	0.0	OFF	1720	0	0.00	0	68.6	68.6	68.6
9-10 AM	1197	0.0	OFF	1197	0	0.00	0	69.2	69.2	69.2
10-11 AM	1216	0.0	3000	1216	0	0.18	0	69.2	57.6	49.7
11AM-NOON	1405	0.0	3000	1405	0	0.17	0	69.0	57.4	49.7
NOON-1PM	1466	0.0	3000	1466	0	0.17	0	68.9	57.4	49.7
1-2 PM	1668	0.0	3000	1668	0	0.17	0	68.7	57.4	49.7
2-3 PM	2090	0.0	3000	2090	0	0.17	0	68.1	57.2	49.7
3-4 PM	2289	0.0	OFF	2289	0	0.00	0	67.9	67.9	67.9
4-5 PM	2267	0.0	OFF	2267	0	0.00	0	67.9	67.9	67.9
5-6 PM	2107	0.0	OFF	2107	0	0.00	0	68.1	68.1	68.1
6-7 PM	1590	0.0	OFF	1590	0	0.00	0	68.7	68.7	68.7
7-8 PM	1160	0.0	OFF	1160	0	0.00	0	69.3	69.3	69.3
8-9 PM	1031	0.0	OFF	1031	0	0.00	0	69.4	69.4	69.4
9-10 PM	827	0.0	OFF	827	0	0.00	0	69.7	69.7	69.7
10-11 PM	539	0.0	OFF	539	0	0.00	0	70.0	70.0	70.0
11PM-MID	366	0.0	OFF	366	0	0.00	0	70.2	70.2	70.2

**"OFF" INDICATES NO ROAD WORK (ALL LANES OPEN TO TRAFFIC)**

*----- SITE BREAKDOWN DELAYS -----*	
BREAKDOWN DURATION (MINS)	0
RANGE OF QUEUE DELAY - MIN (VEH-H) MAX	0.0
AV BREAKDOWNS PER DAY	0.00
AV QUEUE DELAY/DAY (VEH-H)	0.0
AV TOTAL DELAY/DAY (VEH-H)	0.0

*----- SITE ACCIDENT DELAYS -----*	
BREAKDOWN DURATION (MINS)	0
RANGE OF QUEUE DELAY - MIN (VEH-H) MAX	0
AV BREAKDOWNS PER DAY	0
AV QUEUE DELAY/DAY (VEH-H)	0
AV TOTAL DELAY/DAY (VEH-H)	0

AVERAGE ACCIDENT NUMBERS (PIA/DAY)	
MAIN ROUTE WITHOUT WORKS	0.0047
MAIN ROUTE WITH WORKS	0.0038
'DIVERSION'	0.0000
PIA: Personal Injury Accidents	
IMPACTS ON ROAD USERS	
ROAD USER COSTS PER DAY	\$284
CONGESTED HOURS PER DAY*	0

\*Delays Exceeding User-Specified Maximum

**IH 794: IH 43 TO LINCOLN MEMORIAL DR (MILWAUKEE COUNTY)**  
**OFF-PEAK DAY CLOSURE**  
**NO DIVERSION ROUTE (MAX QUEUE METHOD)**

**OCTOBER**

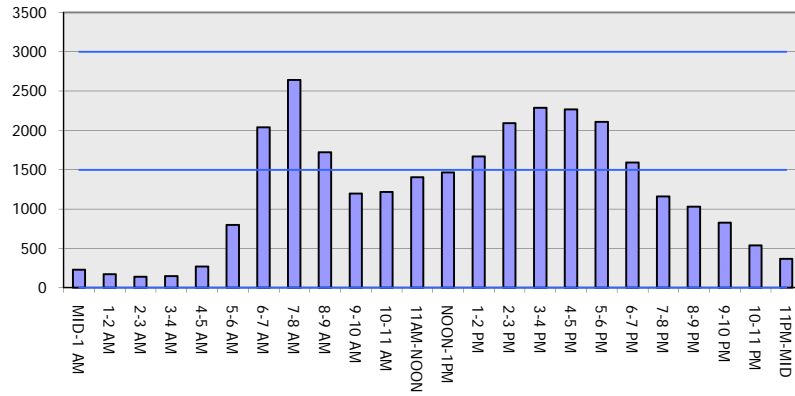
Analyzed for 2009  
 Construction Season

**GRAPHICAL REPRESENTATION OF TRAFFIC MODEL INPUT AND OUTPUT**

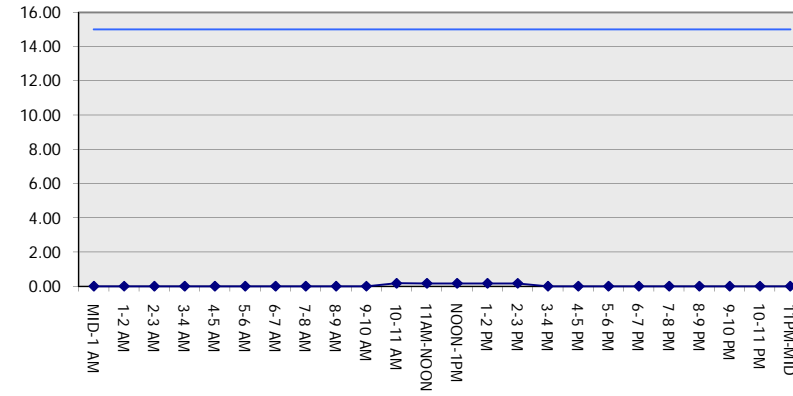
**MON-THUR**

**WESTBOUND DIRECTION**

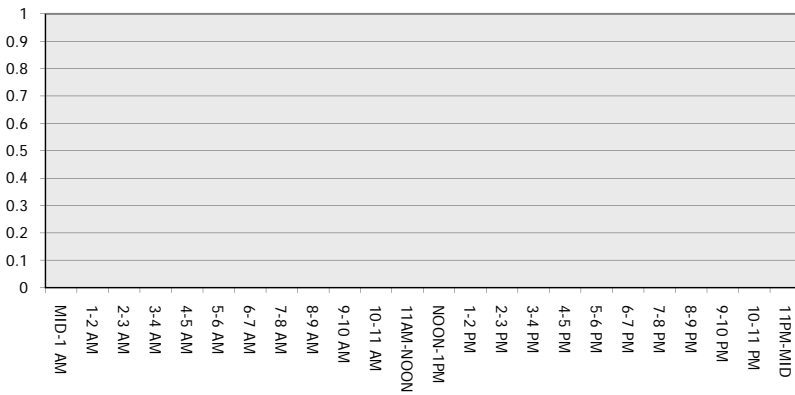
**Main Route - Traffic Demand (Vehicles Per Hour)**



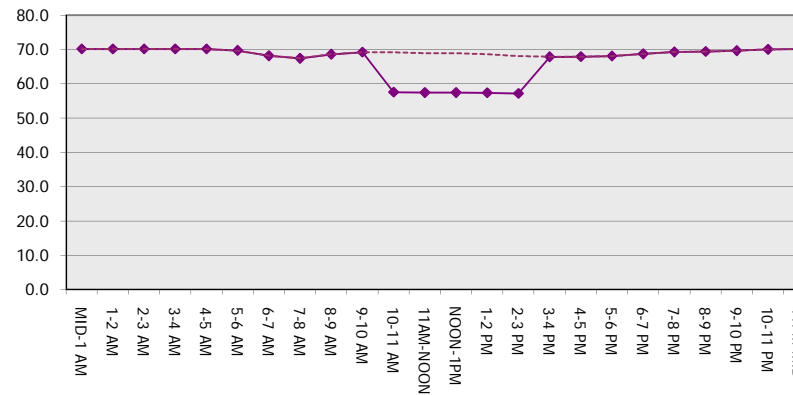
**Main Route Average Delay Per Vehicle (Minutes)**



**Main Route - Average Queue Length (Vehicles)**



**Main Route - Average Speed (MPH)**



<b>IH 794: IH 43 TO LINCOLN MEMORIAL DR (MILWAUKEE COUNTY)</b> <b>OFF-PEAK DAY CLOSURE</b> <b>NO DIVERSION ROUTE (MAX QUEUE METHOD)</b>	<b>OCTOBER</b>
	Analyzed for 2009 Construction Season

**SUMMARY OF TRAFFIC MODEL OUTPUT**

MON-THUR                      EASTBOUND DIRECTION

TIME OF DAY	FLOWS AND CAPACITY IN VEH/HR						AVERAGE SPEEDS IN MPH			
	MAIN ROUTE		SITE CAPA CITY	FLOW		AV.DEL PER VEH (MINS)	AVERAGE QUEUE (VEH)	MAIN ROUTE		SITE
	DEMAND FLOW	PCT HEAVY		MAIN ROUTE	'DIVER TED'			WITHOUT WORK ZONE	WITH WORK ZONE	
MID-1 AM	337	0.0	OFF	337	0	0.00	0	70.2	70.2	70.2
1-2 AM	232	0.0	OFF	232	0	0.00	0	70.2	70.2	70.2
2-3 AM	193	0.0	OFF	193	0	0.00	0	70.2	70.2	70.2
3-4 AM	240	0.0	OFF	240	0	0.00	0	70.2	70.2	70.2
4-5 AM	587	0.0	OFF	587	0	0.00	0	70.0	70.0	70.0
5-6 AM	2471	0.0	OFF	2471	0	0.00	0	67.7	67.7	67.7
6-7 AM	4996	0.0	OFF	4996	0	0.00	0	56.7	56.7	56.7
7-8 AM	5557	0.0	OFF	5557	0	0.00	0	52.9	52.9	52.9
8-9 AM	5091	0.0	OFF	5091	0	0.00	0	56.1	56.1	56.1
9-10 AM	3358	0.0	OFF	3358	0	0.00	0	66.6	66.6	66.6
10-11 AM	2813	0.0	3000	2813	0	0.31	0	67.3	50.1	40.4
11AM-NOON	2988	0.0	2999	2988	0	0.37	0	67.0	47.4	37.4
NOON-1PM	2936	0.0	3000	2936	0	0.35	0	67.1	48.3	38.3
1-2 PM	2925	0.0	2999	2925	0	0.34	0	67.1	48.4	38.4
2-3 PM	3049	0.0	2999	3049	0	0.58	14	66.9	40.6	37.4
3-4 PM	3449	0.0	OFF	3449	0	0.01	0	66.4	65.9	65.9
4-5 PM	4112	0.0	OFF	4112	0	0.00	0	62.8	62.8	62.8
5-6 PM	4238	0.0	OFF	4238	0	0.00	0	61.9	61.9	61.9
6-7 PM	3343	0.0	OFF	3343	0	0.00	0	66.6	66.6	66.6
7-8 PM	2321	0.0	OFF	2321	0	0.00	0	67.9	67.9	67.9
8-9 PM	2071	0.0	OFF	2071	0	0.00	0	68.2	68.2	68.2
9-10 PM	1758	0.0	OFF	1758	0	0.00	0	68.6	68.6	68.6
10-11 PM	1247	0.0	OFF	1247	0	0.00	0	69.2	69.2	69.2
11PM-MID	717	0.0	OFF	717	0	0.00	0	69.9	69.9	69.9

"OFF" INDICATES NO ROAD WORK (ALL LANES OPEN TO TRAFFIC)

*----- SITE BREAKDOWN DELAYS -----*	
BREAKDOWN DURATION (MINS)	0
RANGE OF QUEUE DELAY - MIN (VEH-H) MAX	0.0
AV BREAKDOWNS PER DAY	0.00
AV QUEUE DELAY/DAY (VEH-H)	0.0
AV TOTAL DELAY/DAY (VEH-H)	0.0

*----- SITE ACCIDENT DELAYS -----*	
BREAKDOWN DURATION (MINS)	0
RANGE OF QUEUE DELAY - MIN (VEH-H) MAX	0
AV BREAKDOWNS PER DAY	0
AV QUEUE DELAY/DAY (VEH-H)	0
AV TOTAL DELAY/DAY (VEH-H)	0

AVERAGE ACCIDENT NUMBERS (PIA/DAY)	
MAIN ROUTE WITHOUT WORKS	0.0097
MAIN ROUTE WITH WORKS	0.0081
'DIVERSION'	0.0000

PIA: Personal Injury Accidents

ECONOMIC IMPACT ON ROAD USERS	
ROAD USER COSTS PER DAY	\$1,222
CONGESTED HOURS PER DAY*	0

\*Delays Exceeding User-Specified Maximum

**IH 794: IH 43 TO LINCOLN MEMORIAL DR (MILWAUKEE COUNTY)  
OFF-PEAK DAY CLOSURE  
NO DIVERSION ROUTE (MAX QUEUE METHOD)**

**OCTOBER**

Analyzed for 2009  
Construction Season

**GRAPHICAL REPRESENTATION OF TRAFFIC MODEL INPUT AND OUTPUT**

**MON-THUR EASTBOUND DIRECTION**

