

IH 794: IH 43 TO LINCOLN MEMORIAL DR (MILWAUKEE COUNTY) OFF-PEAK DAY CLOSURE NO DIVERSION ROUTE (MAX QUEUE METHOD)	OCTOBER
	Analyzed for 2009 Construction Season

SUMMARY OF TRAFFIC MODEL OUTPUT

FRIDAY WESTBOUND DIRECTION

TIME OF DAY	FLOWS AND CAPACITY IN VEH/HR						AVERAGE SPEEDS IN MPH			
	MAIN ROUTE		SITE CAPA CITY	FLOW		AV.DEL PER VEH (MINS)	AVERAGE QUEUE (VEH)	MAIN ROUTE		SITE
	DEMAND FLOW	PCT HEAVY		MAIN ROUTE	'DIVER TED'			WITHOUT WORK ZONE	WITH WORK ZONE	
MID-1 AM	320	0.0	OFF	320	0	0.00	0	70.2	70.2	70.2
1-2 AM	257	0.0	OFF	257	0	0.00	0	70.2	70.2	70.2
2-3 AM	184	0.0	OFF	184	0	0.00	0	70.2	70.2	70.2
3-4 AM	167	0.0	OFF	167	0	0.00	0	70.2	70.2	70.2
4-5 AM	267	0.0	OFF	267	0	0.00	0	70.2	70.2	70.2
5-6 AM	779	0.0	OFF	779	0	0.00	0	69.7	69.7	69.7
6-7 AM	2002	0.0	OFF	2002	0	0.00	0	68.2	68.2	68.2
7-8 AM	2694	0.0	OFF	2694	0	0.00	0	67.4	67.4	67.4
8-9 AM	1811	0.0	OFF	1811	0	0.00	0	68.5	68.5	68.5
9-10 AM	1442	0.0	OFF	1442	0	0.00	0	68.9	68.9	68.9
10-11 AM	1489	0.0	3000	1489	0	0.17	0	68.9	57.4	49.7
11AM-NOON	1730	0.0	3000	1730	0	0.17	0	68.6	57.3	49.7
NOON-1PM	1727	0.0	3000	1727	0	0.17	0	68.6	57.3	49.7
1-2 PM	1812	0.0	3000	1812	0	0.17	0	68.5	57.3	49.7
2-3 PM	2150	0.0	3000	2150	0	0.17	0	68.1	57.1	49.7
3-4 PM	2214	0.0	OFF	2214	0	0.00	0	68.0	68.0	68.0
4-5 PM	2121	0.0	OFF	2121	0	0.00	0	68.1	68.1	68.1
5-6 PM	2023	0.0	OFF	2023	0	0.00	0	68.2	68.2	68.2
6-7 PM	1469	0.0	OFF	1469	0	0.00	0	68.9	68.9	68.9
7-8 PM	974	0.0	OFF	974	0	0.00	0	69.6	69.6	69.6
8-9 PM	868	0.0	OFF	868	0	0.00	0	69.7	69.7	69.7
9-10 PM	1040	0.0	OFF	1040	0	0.00	0	69.4	69.4	69.4
10-11 PM	824	0.0	OFF	824	0	0.00	0	69.7	69.7	69.7
11PM-MID	669	0.0	OFF	669	0	0.00	0	69.9	69.9	69.9

"OFF" INDICATES NO ROAD WORK (ALL LANES OPEN TO TRAFFIC)

----- SITE BREAKDOWN DELAYS -----	
BREAKDOWN DURATION (MINS)	0
RANGE OF QUEUE DELAY - MIN (VEH-H) MAX	0.0
AV BREAKDOWNS PER DAY	0.00
AV QUEUE DELAY/DAY (VEH-H)	0.0
AV TOTAL DELAY/DAY (VEH-H)	0.0

----- SITE ACCIDENT DELAYS -----	
BREAKDOWN DURATION (MINS)	0
RANGE OF QUEUE DELAY - MIN (VEH-H) MAX	0
AV BREAKDOWNS PER DAY	0
AV QUEUE DELAY/DAY (VEH-H)	0
AV TOTAL DELAY/DAY (VEH-H)	0

AVERAGE ACCIDENT NUMBERS (PIA/DAY)	
MAIN ROUTE WITHOUT WORKS	0.0049
MAIN ROUTE WITH WORKS	0.0040
'DIVERSION'	0.0000
<small>PIA: Personal Injury Accidents</small>	
IMPACTS ON ROAD USERS	
ROAD USER COSTS PER DAY	\$298
CONGESTED HOURS PER DAY*	0

*Delays Exceeding User-Specified Maximum

IH 794: IH 43 TO LINCOLN MEMORIAL DR (MILWAUKEE COUNTY)
OFF-PEAK DAY CLOSURE
NO DIVERSION ROUTE (MAX QUEUE METHOD)

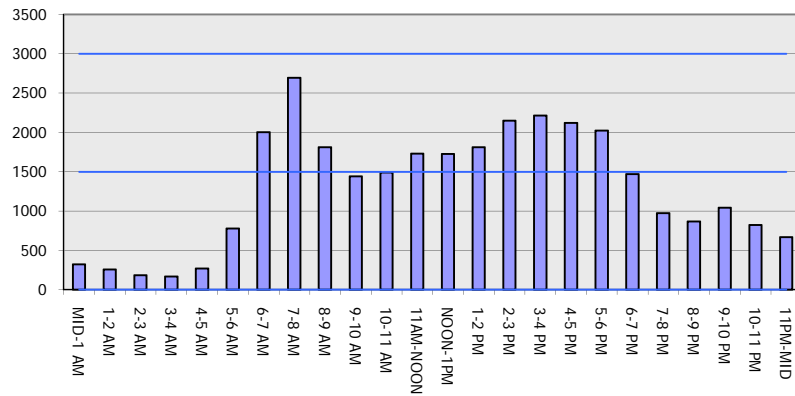
OCTOBER

Analyzed for 2009
 Construction Season

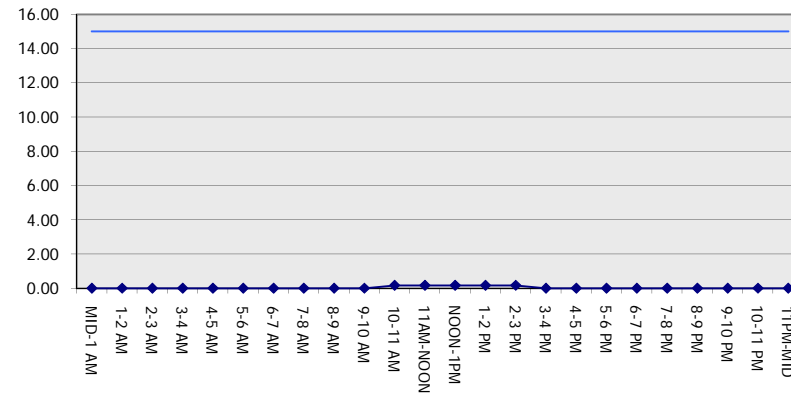
GRAPHICAL REPRESENTATION OF TRAFFIC MODEL INPUT AND OUTPUT

FRIDAY WESTBOUND DIRECTION

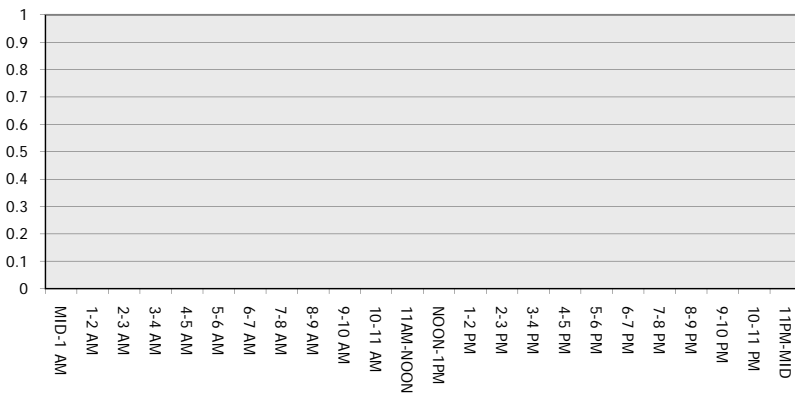
Main Route - Traffic Demand (Vehicles Per Hour)



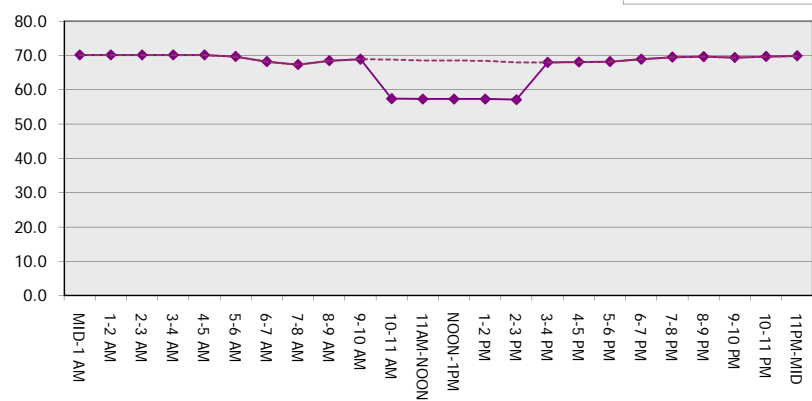
Main Route Average Delay Per Vehicle (Minutes)



Main Route - Average Queue Length (Vehicles)



Main Route - Average Speed (MPH)



IH 794: IH 43 TO LINCOLN MEMORIAL DR (MILWAUKEE COUNTY) OFF-PEAK DAY CLOSURE NO DIVERSION ROUTE (MAX QUEUE METHOD)	OCTOBER
	Analyzed for 2009 Construction Season

SUMMARY OF TRAFFIC MODEL OUTPUT

FRIDAY EASTBOUND DIRECTION

TIME OF DAY	FLOWS AND CAPACITY IN VEH/HR						AVERAGE SPEEDS IN MPH			
	MAIN ROUTE		SITE CAPA CITY	FLOW		AV.DEL PER VEH (MINS)	AVERAGE QUEUE (VEH)	MAIN ROUTE		SITE
	DEMAND FLOW	PCT HEAVY		MAIN ROUTE	'DIVER TED'			WITHOUT WORK ZONE	WITH WORK ZONE	
MID-1 AM	442	0.0	OFF	442	0	0.00	0	70.2	70.2	70.2
1-2 AM	289	0.0	OFF	289	0	0.00	0	70.2	70.2	70.2
2-3 AM	218	0.0	OFF	218	0	0.00	0	70.2	70.2	70.2
3-4 AM	275	0.0	OFF	275	0	0.00	0	70.2	70.2	70.2
4-5 AM	568	0.0	OFF	568	0	0.00	0	70.0	70.0	70.0
5-6 AM	2409	0.0	OFF	2409	0	0.00	0	67.8	67.8	67.8
6-7 AM	4300	0.0	OFF	4300	0	0.00	0	61.5	61.5	61.5
7-8 AM	4823	0.0	OFF	4823	0	0.00	0	57.9	57.9	57.9
8-9 AM	4476	0.0	OFF	4476	0	0.00	0	60.3	60.3	60.3
9-10 AM	3106	0.0	OFF	3106	0	0.00	0	66.9	66.9	66.9
10-11 AM	2641	0.0	3000	2641	0	0.25	0	67.4	52.7	43.7
11AM-NOON	3026	0.0	2999	3026	0	0.49	7	66.9	43.2	37.3
NOON-1PM	2930	0.0	3000	2930	0	0.44	5	67.1	45.1	38.2
1-2 PM	3173	0.0	2999	3173	0	1.49	75	66.8	25.2	37.3
2-3 PM	3291	0.0	2999	3291	0	5.60	297	66.6	12.0	37.3
3-4 PM	3818	0.0	OFF	3818	0	0.54	49	64.8	40.9	40.9
4-5 PM	4305	0.0	OFF	4305	0	0.00	0	61.4	61.4	61.4
5-6 PM	4676	0.0	OFF	4676	0	0.00	0	58.9	58.9	58.9
6-7 PM	3910	0.0	OFF	3910	0	0.00	0	64.1	64.1	64.1
7-8 PM	2898	0.0	OFF	2898	0	0.00	0	67.1	67.1	67.1
8-9 PM	2309	0.0	OFF	2309	0	0.00	0	67.9	67.9	67.9
9-10 PM	2473	0.0	OFF	2473	0	0.00	0	67.7	67.7	67.7
10-11 PM	1974	0.0	OFF	1974	0	0.00	0	68.3	68.3	68.3
11PM-MID	1332	0.0	OFF	1332	0	0.00	0	69.1	69.1	69.1

"OFF" INDICATES NO ROAD WORK (ALL LANES OPEN TO TRAFFIC)

----- SITE BREAKDOWN DELAYS -----	
BREAKDOWN DURATION (MINS)	0
RANGE OF QUEUE DELAY - MIN (VEH-H) MAX	0.0
AV BREAKDOWNS PER DAY	0.00
AV QUEUE DELAY/DAY (VEH-H)	0.0
AV TOTAL DELAY/DAY (VEH-H)	0.0

----- SITE ACCIDENT DELAYS -----	
BREAKDOWN DURATION (MINS)	0
RANGE OF QUEUE DELAY - MIN (VEH-H) MAX	0
AV BREAKDOWNS PER DAY	0
AV QUEUE DELAY/DAY (VEH-H)	0
AV TOTAL DELAY/DAY (VEH-H)	0

AVERAGE ACCIDENT NUMBERS (PIA/DAY)	
MAIN ROUTE WITHOUT WORKS	0.0101
MAIN ROUTE WITH WORKS	0.0085
'DIVERSION'	0.0000

PIA: Personal Injury Accidents

ECONOMIC IMPACT ON ROAD USERS	
ROAD USER COSTS PER DAY	\$5,642
CONGESTED HOURS PER DAY*	0

*Delays Exceeding User-Specified Maximum

**IH 794: IH 43 TO LINCOLN MEMORIAL DR (MILWAUKEE COUNTY)
OFF-PEAK DAY CLOSURE
NO DIVERSION ROUTE (MAX QUEUE METHOD)**

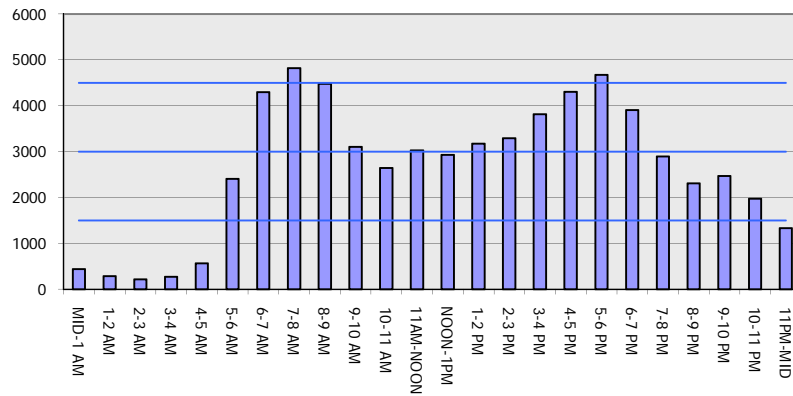
OCTOBER

Analyzed for 2009
Construction Season

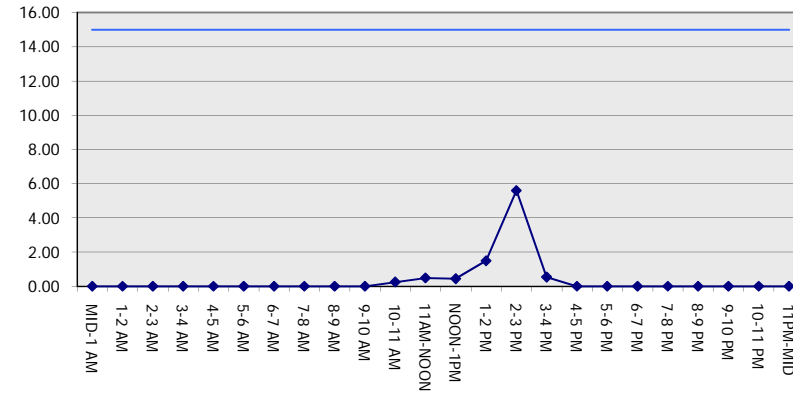
GRAPHICAL REPRESENTATION OF TRAFFIC MODEL INPUT AND OUTPUT

FRIDAY EASTBOUND DIRECTION

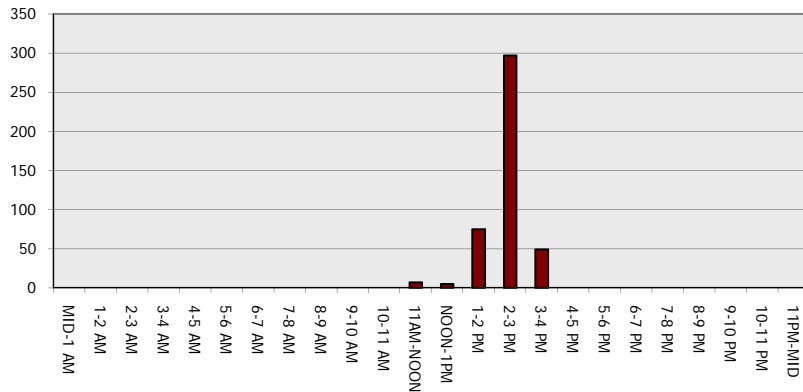
Main Route - Traffic Demand (Vehicles Per Hour)



Main Route Average Delay Per Vehicle (Minutes)



Main Route - Average Queue Length (Vehicles)



Main Route - Average Speed (MPH)

