

IH 794: IH 43 TO LINCOLN MEMORIAL DR (MILWAUKEE COUNTY) OFF-PEAK DAY 2 LANE CLOSURE NO DIVERSION ROUTE (MAX QUEUE METHOD)	AUGUST
	Analyzed for 2009 Construction Season

SUMMARY OF TRAFFIC MODEL OUTPUT

SATURDAY WESTBOUND DIRECTION

TIME OF DAY	FLOWS AND CAPACITY IN VEH/HR						AVERAGE SPEEDS IN MPH				
	MAIN ROUTE		SITE CAPA CITY	FLOW		AV.DEL PER VEH (MINS)	AVERAGE QUEUE (VEH)	MAIN ROUTE		SITE	
	DEMAND FLOW	PCT HEAVY		MAIN ROUTE	'DIVER TED'			WITHOUT WORK ZONE	WITH WORK ZONE		
MID-1 AM	1318	0.0	OFF	1318	0	0.00	0	69.1	69.1	69.1	
1-2 AM	1047	0.0	OFF	1047	0	0.00	0	69.4	69.4	69.4	
2-3 AM	786	0.0	OFF	786	0	0.00	0	69.7	69.7	69.7	
3-4 AM	368	0.0	OFF	368	0	0.00	0	70.2	70.2	70.2	
4-5 AM	351	0.0	OFF	351	0	0.00	0	70.2	70.2	70.2	
5-6 AM	625	0.0	OFF	625	0	0.00	0	69.9	69.9	69.9	
6-7 AM	1057	0.0	OFF	1057	0	0.00	0	69.4	69.4	69.4	
7-8 AM	1525	0.0	OFF	1525	0	0.00	0	68.8	68.8	68.8	
8-9 AM	1891	0.0	1499	1891	0	5.55	169	68.4	10.6	30.8	
9-10 AM	2359	0.0	1499	1507	852	16.69+	422	67.8	5.4	30.8	
10-11 AM	2721	0.0	1500	1520	1201	16.79+	425	67.4	5.4	30.8	
11AM-NOON	3083	0.0	1500	1513	1571	17.07+	433	66.9	5.3	30.8	
NOON-1PM	2949	0.0	1500	1500	1449	16.97+	430	67.1	5.4	30.8	
1-2 PM	2949	0.0	1500	1500	1449	16.97+	430	67.1	5.4	30.8	
2-3 PM	3133	0.0	1499	1503	1630	17.13+	435	66.8	5.3	30.8	
3-4 PM	2982	0.0	1500	1498	1485	17.00+	431	67.0	5.3	30.8	
4-5 PM	2876	0.0	1499	1497	1379	16.91+	429	67.1	5.4	30.8	
5-6 PM	2347	0.0	1500	1499	848	16.68+	422	67.8	5.4	30.8	
6-7 PM	2058	0.0	OFF	2058	0	0.24	23	68.2	53.6	53.6	
7-8 PM	1939	0.0	OFF	1939	0	0.00	0	68.3	68.3	68.3	
8-9 PM	2150	0.0	OFF	2150	0	0.00	0	68.1	68.1	68.1	
9-10 PM	2468	0.0	OFF	2468	0	0.00	0	67.7	67.7	67.7	
10-11 PM	2395	0.0	OFF	2395	0	0.00	0	67.8	67.8	67.8	
11PM-MID	2393	0.0	OFF	2393	0	0.00	0	67.8	67.8	67.8	

"OFF" INDICATES NO ROAD WORK (ALL LANES OPEN TO TRAFFIC)

+ INDICATES QUEUEING EXCEEDS USER-SPECIFIED MAXIMUM LIMIT

----- SITE BREAKDOWN DELAYS -----	
BREAKDOWN DURATION (MINS)	0
RANGE OF QUEUE DELAY - MIN (VEH-H) MAX	0.0
AV BREAKDOWNS PER DAY	0.00
AV QUEUE DELAY/DAY (VEH-H)	0.0
AV TOTAL DELAY/DAY (VEH-H)	0.0

----- SITE ACCIDENT DELAYS -----	
BREAKDOWN DURATION (MINS)	0
RANGE OF QUEUE DELAY - MIN (VEH-H) MAX	0
AV BREAKDOWNS PER DAY	0
AV QUEUE DELAY/DAY (VEH-H)	0
AV TOTAL DELAY/DAY (VEH-H)	0

AVERAGE ACCIDENT NUMBERS (PIA/DAY)	
MAIN ROUTE WITHOUT WORKS	0.0076
MAIN ROUTE WITH WORKS	0.0040
'DIVERSION'	0.0044
PIA: Personal Injury Accidents	
IMPACTS ON ROAD USERS	
ROAD USER COSTS PER DAY	\$122,180
CONGESTED HOURS PER DAY*	9

*Delays Exceeding User-Specified Maximum

IH 794: IH 43 TO LINCOLN MEMORIAL DR (MILWAUKEE COUNTY)
OFF-PEAK DAY 2 LANE CLOSURE
NO DIVERSION ROUTE (MAX QUEUE METHOD)

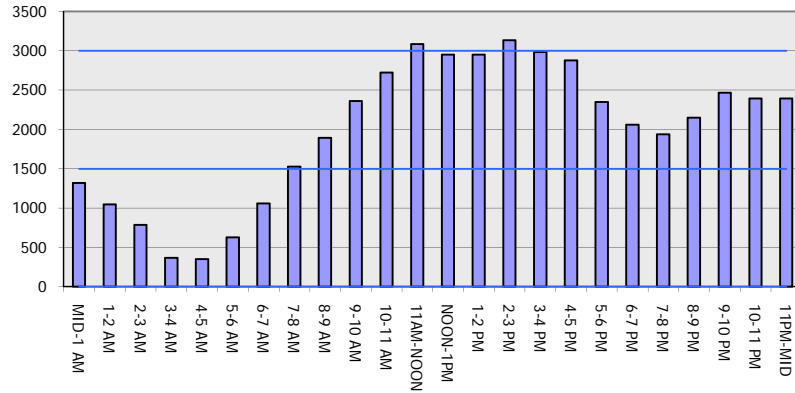
AUGUST

Analyzed for 2009
 Construction Season

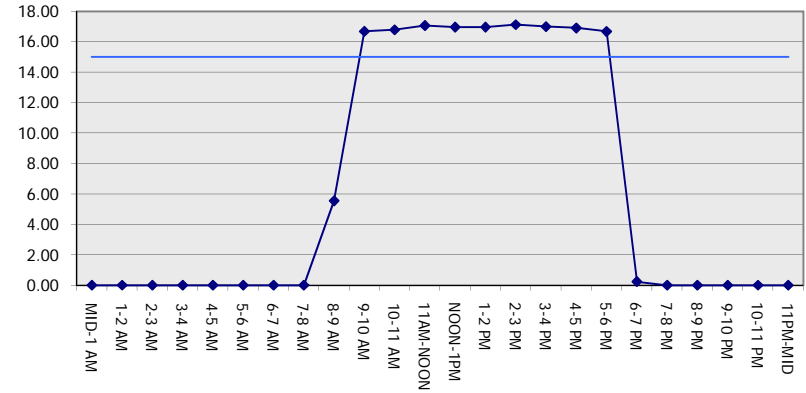
GRAPHICAL REPRESENTATION OF TRAFFIC MODEL INPUT AND OUTPUT

SATURDAY WESTBOUND DIRECTION

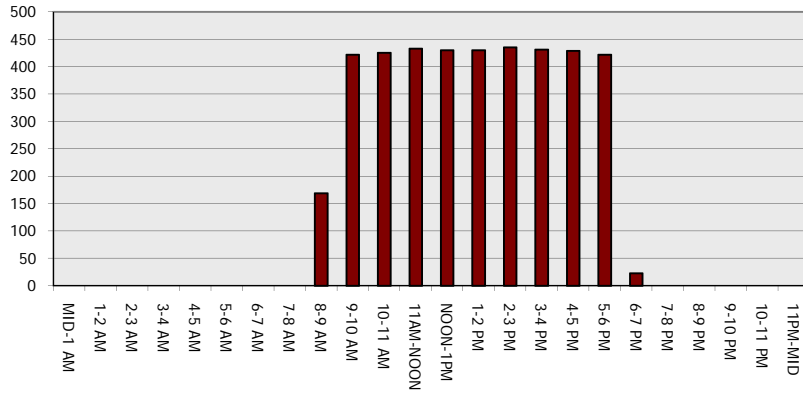
Main Route - Traffic Demand (Vehicles Per Hour)



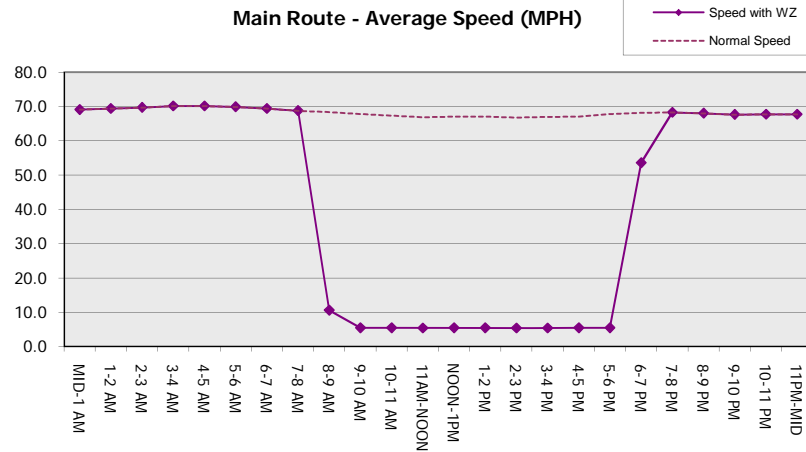
Main Route Average Delay Per Vehicle (Minutes)



Main Route - Average Queue Length (Vehicles)



Main Route - Average Speed (MPH)



IH 794: IH 43 TO LINCOLN MEMORIAL DR (MILWAUKEE COUNTY) OFF-PEAK DAY 2 LANE CLOSURE NO DIVERSION ROUTE (MAX QUEUE METHOD)	AUGUST
	Analyzed for 2009 Construction Season

SUMMARY OF TRAFFIC MODEL OUTPUT

SATURDAY EASTBOUND DIRECTION

TIME OF DAY	FLOWS AND CAPACITY IN VEH/HR						AVERAGE SPEEDS IN MPH			
	MAIN ROUTE		SITE CAPA CITY	FLOW		AV.DEL PER VEH (MINS)	AVERAGE QUEUE (VEH)	MAIN ROUTE		SITE
	DEMAND FLOW	PCT HEAVY		MAIN ROUTE	'DIVER TED'			WITHOUT WORK ZONE	WITH WORK ZONE	
MID-1 AM	771	0.0	OFF	771	0	0.00	0	69.8	69.8	69.8
1-2 AM	446	0.0	OFF	446	0	0.00	0	70.2	70.2	70.2
2-3 AM	379	0.0	OFF	379	0	0.00	0	70.2	70.2	70.2
3-4 AM	344	0.0	OFF	344	0	0.00	0	70.2	70.2	70.2
4-5 AM	440	0.0	OFF	440	0	0.00	0	70.2	70.2	70.2
5-6 AM	773	0.0	OFF	773	0	0.00	0	69.8	69.8	69.8
6-7 AM	1183	0.0	OFF	1183	0	0.00	0	69.2	69.2	69.2
7-8 AM	1554	0.0	OFF	1554	0	0.00	0	68.8	68.8	68.8
8-9 AM	2051	0.0	1499	2019	32	8.27+	244	68.2	8.1	30.8
9-10 AM	2357	0.0	1500	1435	922	16.59+	420	67.8	5.4	30.9
10-11 AM	2601	0.0	1499	1485	1116	16.76+	424	67.5	5.4	30.8
11AM-NOON	3056	0.0	1499	1496	1560	17.07+	433	66.9	5.3	30.8
NOON-1PM	3054	0.0	1500	1499	1555	17.06+	433	66.9	5.3	30.8
1-2 PM	3137	0.0	1499	1501	1636	17.13+	435	66.8	5.3	30.8
2-3 PM	3259	0.0	1500	1500	1759	17.15+	435	66.7	5.3	30.8
3-4 PM	3237	0.0	1500	1500	1737	17.15+	435	66.7	5.3	30.8
4-5 PM	3349	0.0	1500	1500	1849	17.14+	435	66.6	5.3	30.8
5-6 PM	3583	0.0	1500	1500	2083	17.14+	435	66.3	5.3	30.8
6-7 PM	3272	0.0	OFF	3272	0	0.36	34	66.7	47.6	47.6
7-8 PM	2732	0.0	OFF	2732	0	0.00	0	67.3	67.3	67.3
8-9 PM	2622	0.0	OFF	2622	0	0.00	0	67.5	67.5	67.5
9-10 PM	2614	0.0	OFF	2614	0	0.00	0	67.5	67.5	67.5
10-11 PM	2368	0.0	OFF	2368	0	0.00	0	67.8	67.8	67.8
11PM-MID	1765	0.0	OFF	1765	0	0.00	0	68.6	68.6	68.6

"OFF" INDICATES NO ROAD WORK (ALL LANES OPEN TO TRAFFIC)

+ INDICATES QUEUEING EXCEEDS USER-SPECIFIED MAXIMUM LIMIT

----- SITE BREAKDOWN DELAYS -----	
BREAKDOWN DURATION (MINS)	0
RANGE OF QUEUE DELAY - MIN (VEH-H) MAX	0.0
AV BREAKDOWNS PER DAY	0.00
AV QUEUE DELAY/DAY (VEH-H)	0.0
AV TOTAL DELAY/DAY (VEH-H)	0.0

----- SITE ACCIDENT DELAYS -----	
BREAKDOWN DURATION (MINS)	0
RANGE OF QUEUE DELAY - MIN (VEH-H) MAX	0
AV BREAKDOWNS PER DAY	0
AV QUEUE DELAY/DAY (VEH-H)	0
AV TOTAL DELAY/DAY (VEH-H)	0

AVERAGE ACCIDENT NUMBERS (PIA/DAY)	
MAIN ROUTE WITHOUT WORKS	0.0081
MAIN ROUTE WITH WORKS	0.0042
'DIVERSION'	0.0053

PIA: Personal Injury Accidents

ECONOMIC IMPACT ON ROAD USERS	
ROAD USER COSTS PER DAY	\$135,524
CONGESTED HOURS PER DAY*	10

*Delays Exceeding User-Specified Maximum

IH 794: IH 43 TO LINCOLN MEMORIAL DR (MILWAUKEE COUNTY)
OFF-PEAK DAY 2 LANE CLOSURE
NO DIVERSION ROUTE (MAX QUEUE METHOD)

AUGUST

Analyzed for 2009
 Construction Season

GRAPHICAL REPRESENTATION OF TRAFFIC MODEL INPUT AND OUTPUT
SATURDAY EASTBOUND DIRECTION

