

<b>IH 794: IH 43 TO LINCOLN MEMORIAL DR (MILWAUKEE COUNTY)</b> <b>OFF-PEAK DAY CLOSURE</b> <b>NO DIVERSION ROUTE (MAX QUEUE METHOD)</b>	<b>AUGUST</b>
	Analyzed for 2009 Construction Season

**SUMMARY OF TRAFFIC MODEL OUTPUT**

SATURDAY WESTBOUND DIRECTION

TIME OF DAY	FLOWS AND CAPACITY IN VEH/HR						AVERAGE SPEEDS IN MPH			
	MAIN ROUTE		SITE CAPA CITY	FLOW		AV.DEL PER VEH (MINS)	AVERAGE QUEUE (VEH)	MAIN ROUTE		SITE
	DEMAND FLOW	PCT HEAVY		MAIN ROUTE	'DIVER TED'			WITHOUT WORK ZONE	WITH WORK ZONE	
MID-1 AM	1318	0.0	OFF	1318	0	0.00	0	69.1	69.1	69.1
1-2 AM	1047	0.0	OFF	1047	0	0.00	0	69.4	69.4	69.4
2-3 AM	786	0.0	OFF	786	0	0.00	0	69.7	69.7	69.7
3-4 AM	368	0.0	OFF	368	0	0.00	0	70.2	70.2	70.2
4-5 AM	351	0.0	OFF	351	0	0.00	0	70.2	70.2	70.2
5-6 AM	625	0.0	OFF	625	0	0.00	0	69.9	69.9	69.9
6-7 AM	1057	0.0	OFF	1057	0	0.00	0	69.4	69.4	69.4
7-8 AM	1525	0.0	OFF	1525	0	0.00	0	68.8	68.8	68.8
8-9 AM	1891	0.0	3000	1891	0	0.17	0	68.4	57.3	49.7
9-10 AM	2359	0.0	3000	2359	0	0.17	0	67.8	57.1	49.7
10-11 AM	2721	0.0	2999	2721	0	0.28	0	67.4	51.4	42.1
11AM-NOON	3083	0.0	2999	3083	0	0.92	34	66.9	33.0	37.3
NOON-1PM	2949	0.0	2999	2949	0	1.48	62	67.1	25.3	37.3
1-2 PM	2949	0.0	3000	2949	0	0.48	7	67.1	43.8	37.8
2-3 PM	3133	0.0	2999	3133	0	1.41	65	66.8	26.0	37.3
3-4 PM	2982	0.0	2999	2982	0	2.78	132	67.0	16.8	37.3
4-5 PM	2876	0.0	3000	2876	0	1.52	73	67.1	24.9	38.3
5-6 PM	2347	0.0	3000	2347	0	0.17	0	67.8	57.1	49.7
6-7 PM	2058	0.0	OFF	2058	0	0.00	0	68.2	68.2	68.2
7-8 PM	1939	0.0	OFF	1939	0	0.00	0	68.3	68.3	68.3
8-9 PM	2150	0.0	OFF	2150	0	0.00	0	68.1	68.1	68.1
9-10 PM	2468	0.0	OFF	2468	0	0.00	0	67.7	67.7	67.7
10-11 PM	2395	0.0	OFF	2395	0	0.00	0	67.8	67.8	67.8
11PM-MID	2393	0.0	OFF	2393	0	0.00	0	67.8	67.8	67.8

"OFF" INDICATES NO ROAD WORK (ALL LANES OPEN TO TRAFFIC)

*----- SITE BREAKDOWN DELAYS -----*	
BREAKDOWN DURATION (MINS)	0
RANGE OF QUEUE DELAY - MIN (VEH-H) MAX	0.0
AV BREAKDOWNS PER DAY	0.00
AV QUEUE DELAY/DAY (VEH-H)	0.0
AV TOTAL DELAY/DAY (VEH-H)	0.0

*----- SITE ACCIDENT DELAYS -----*	
BREAKDOWN DURATION (MINS)	0
RANGE OF QUEUE DELAY - MIN (VEH-H) MAX	0
AV BREAKDOWNS PER DAY	0
AV QUEUE DELAY/DAY (VEH-H)	0
AV TOTAL DELAY/DAY (VEH-H)	0

AVERAGE ACCIDENT NUMBERS (PIA/DAY)	
MAIN ROUTE WITHOUT WORKS	0.0076
MAIN ROUTE WITH WORKS	0.0046
'DIVERSION'	0.0000
PIA: Personal Injury Accidents	
IMPACTS ON ROAD USERS	
ROAD USER COSTS PER DAY	\$7,157
CONGESTED HOURS PER DAY*	0

\*Delays Exceeding User-Specified Maximum

**IH 794: IH 43 TO LINCOLN MEMORIAL DR (MILWAUKEE COUNTY)**  
**OFF-PEAK DAY CLOSURE**  
**NO DIVERSION ROUTE (MAX QUEUE METHOD)**

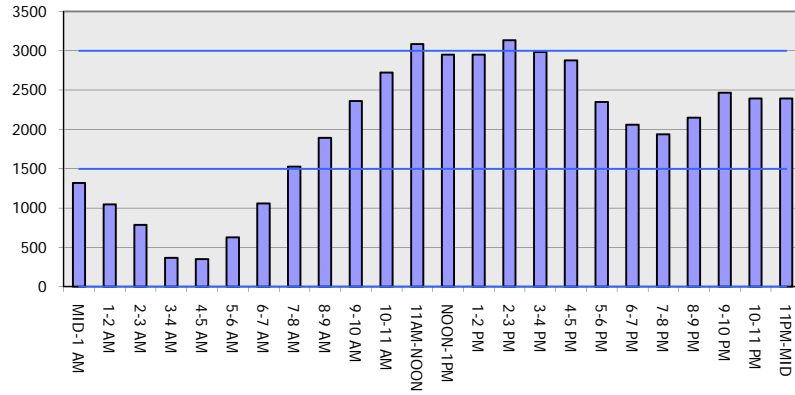
**AUGUST**

Analyzed for 2009  
 Construction Season

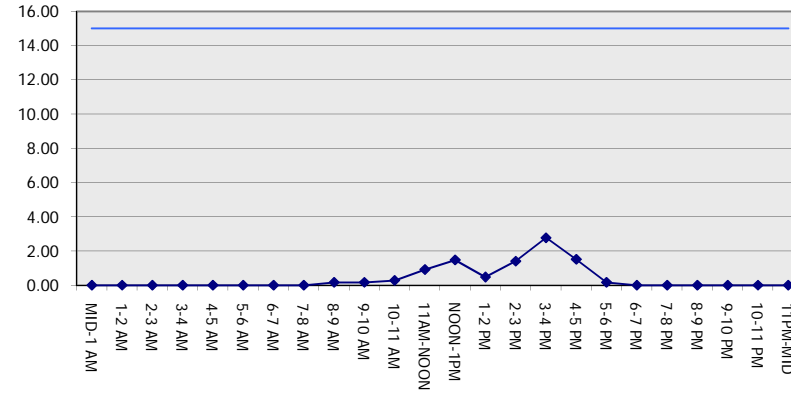
**GRAPHICAL REPRESENTATION OF TRAFFIC MODEL INPUT AND OUTPUT**

**SATURDAY WESTBOUND DIRECTION**

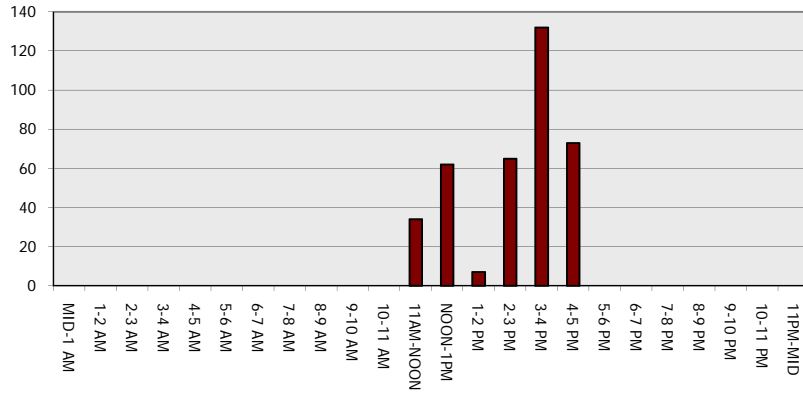
**Main Route - Traffic Demand (Vehicles Per Hour)**



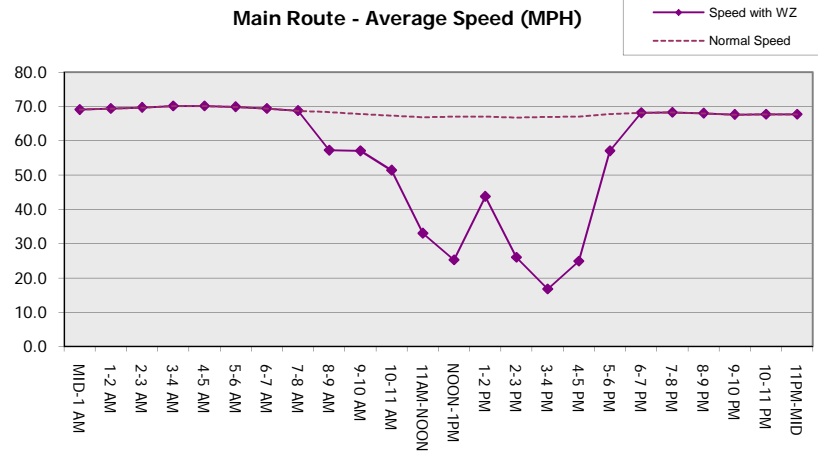
**Main Route Average Delay Per Vehicle (Minutes)**



**Main Route - Average Queue Length (Vehicles)**



**Main Route - Average Speed (MPH)**



<b>IH 794: IH 43 TO LINCOLN MEMORIAL DR (MILWAUKEE COUNTY)</b> <b>OFF-PEAK DAY CLOSURE</b> <b>NO DIVERSION ROUTE (MAX QUEUE METHOD)</b>	<b>AUGUST</b>
	Analyzed for 2009 Construction Season

**SUMMARY OF TRAFFIC MODEL OUTPUT**

SATURDAY EASTBOUND DIRECTION

TIME OF DAY	FLOWS AND CAPACITY IN VEH/HR						AVERAGE SPEEDS IN MPH			
	MAIN ROUTE		SITE CAPA CITY	FLOW		AV.DEL PER VEH (MINS)	AVERAGE QUEUE (VEH)	MAIN ROUTE		SITE
	DEMAND FLOW	PCT HEAVY		MAIN ROUTE	'DIVER TED'			WITHOUT WORK ZONE	WITH WORK ZONE	
MID-1 AM	771	0.0	OFF	771	0	0.00	0	69.8	69.8	69.8
1-2 AM	446	0.0	OFF	446	0	0.00	0	70.2	70.2	70.2
2-3 AM	379	0.0	OFF	379	0	0.00	0	70.2	70.2	70.2
3-4 AM	344	0.0	OFF	344	0	0.00	0	70.2	70.2	70.2
4-5 AM	440	0.0	OFF	440	0	0.00	0	70.2	70.2	70.2
5-6 AM	773	0.0	OFF	773	0	0.00	0	69.8	69.8	69.8
6-7 AM	1183	0.0	OFF	1183	0	0.00	0	69.2	69.2	69.2
7-8 AM	1554	0.0	OFF	1554	0	0.00	0	68.8	68.8	68.8
8-9 AM	2051	0.0	3000	2051	0	0.17	0	68.2	57.2	49.7
9-10 AM	2357	0.0	3000	2357	0	0.17	0	67.8	57.1	49.7
10-11 AM	2601	0.0	2999	2601	0	0.24	0	67.5	53.3	44.6
11AM-NOON	3056	0.0	2999	3056	0	0.58	14	66.9	40.6	37.3
NOON-1PM	3054	0.0	2999	3054	0	1.80	80	66.9	22.2	37.3
1-2 PM	3137	0.0	3000	3137	0	3.41	171	66.8	15.2	37.3
2-3 PM	3259	0.0	3000	3259	0	7.03	372	66.7	10.9	37.3
3-4 PM	3237	0.0	2999	3237	0	11.59	620	66.7	9.1	37.3
4-5 PM	3349	0.0	3000	3159	191	16.04+	865	66.6	8.3	37.3
5-6 PM	3583	0.0	3000	3008	576	16.95+	914	66.3	8.3	37.3
6-7 PM	3272	0.0	OFF	3272	0	1.58	151	66.7	24.2	24.2
7-8 PM	2732	0.0	OFF	2732	0	0.00	0	67.3	67.3	67.3
8-9 PM	2622	0.0	OFF	2622	0	0.00	0	67.5	67.5	67.5
9-10 PM	2614	0.0	OFF	2614	0	0.00	0	67.5	67.5	67.5
10-11 PM	2368	0.0	OFF	2368	0	0.00	0	67.8	67.8	67.8
11PM-MID	1765	0.0	OFF	1765	0	0.00	0	68.6	68.6	68.6

"OFF" INDICATES NO ROAD WORK (ALL LANES OPEN TO TRAFFIC)

+ INDICATES QUEUEING EXCEEDS USER-SPECIFIED MAXIMUM LIMIT

*----- SITE BREAKDOWN DELAYS -----*	
BREAKDOWN DURATION (MINS)	0
RANGE OF QUEUE DELAY - MIN (VEH-H) MAX	0.0
AV BREAKDOWNS PER DAY	0.00
AV QUEUE DELAY/DAY (VEH-H)	0.0
AV TOTAL DELAY/DAY (VEH-H)	0.0

*----- SITE ACCIDENT DELAYS -----*	
BREAKDOWN DURATION (MINS)	0
RANGE OF QUEUE DELAY - MIN (VEH-H) MAX	0
AV BREAKDOWNS PER DAY	0
AV QUEUE DELAY/DAY (VEH-H)	0
AV TOTAL DELAY/DAY (VEH-H)	0

AVERAGE ACCIDENT NUMBERS (PIA/DAY)	
MAIN ROUTE WITHOUT WORKS	0.0081
MAIN ROUTE WITH WORKS	0.0049
'DIVERSION'	0.0003

PIA: Personal Injury Accidents

ECONOMIC IMPACT ON ROAD USERS	
ROAD USER COSTS PER DAY	\$51,743
CONGESTED HOURS PER DAY*	2

\*Delays Exceeding User-Specified Maximum

**IH 794: IH 43 TO LINCOLN MEMORIAL DR (MILWAUKEE COUNTY)**  
**OFF-PEAK DAY CLOSURE**  
**NO DIVERSION ROUTE (MAX QUEUE METHOD)**

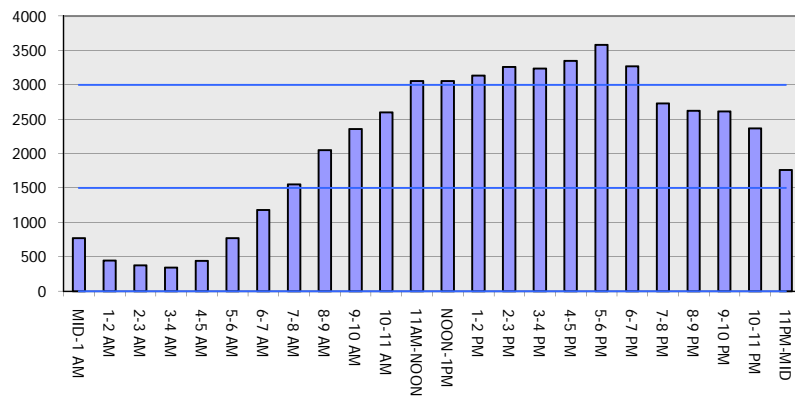
**AUGUST**

Analyzed for 2009  
 Construction Season

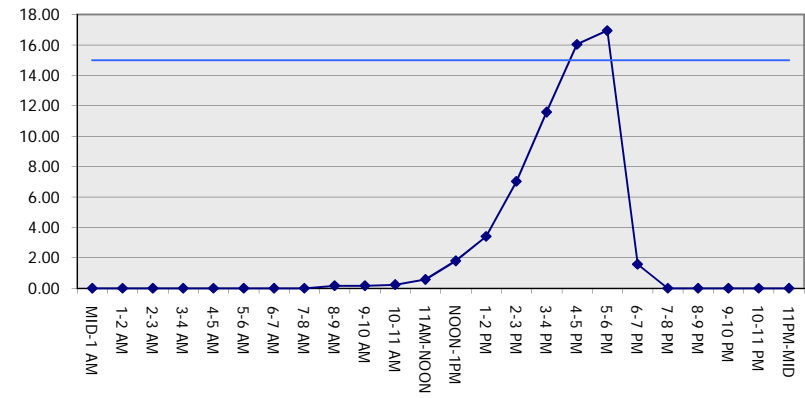
**GRAPHICAL REPRESENTATION OF TRAFFIC MODEL INPUT AND OUTPUT**

**SATURDAY EASTBOUND DIRECTION**

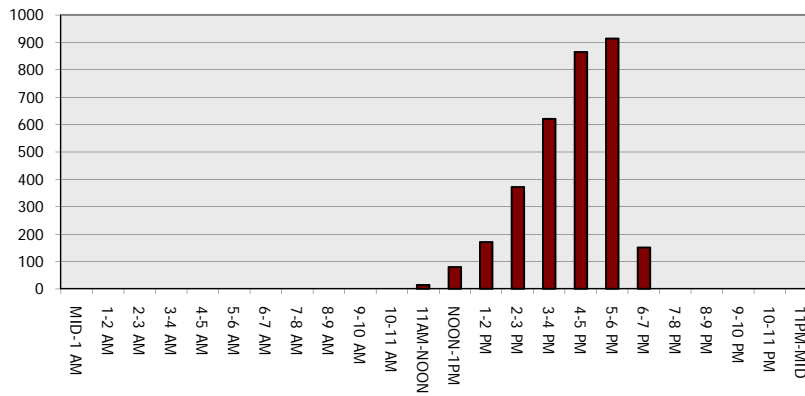
**Main Route - Traffic Demand (Vehicles Per Hour)**



**Main Route Average Delay Per Vehicle (Minutes)**



**Main Route - Average Queue Length (Vehicles)**



**Main Route - Average Speed (MPH)**

